

In Lieu of
Form 3160
(June 1990)

UNITED STATES
DEPARTMENT OF INTERIOR
BUREAU OF LAND MANAGEMENT

FORM APPROVED
Budget Bureau No. 1004-0135
Expires: March 31, 1993

SUNDRY NOTICE AND REPORTS ON WELLS

Do not use this form for proposals to drill or to deepen or reentry to a different reservoir. Use "APPLICATION TO DRILL" for permit for such proposals

5. Lease Designation and Serial No.
SF-078767

6. If Indian, Allottee or Tribe Name

SUBMIT IN TRIPLICATE

1. Type of Well
☐ Oil Well ☒ Gas Well ☐ Other

2. Name of Operator
WILLIAMS PRODUCTION COMPANY

3. Address and Telephone No.
PO BOX 3102 MS 37-2, TULSA, OK 74101 (918) 573-6254

4. Location of Well (Footage, Sec., T., R., M., or Survey Description)
1025' FSL & 1310' FWL, SW/4 SW/4, SEC 13 T31N R6W

7. If Unit or CA, Agreement Designation
ROSA UNIT

8. Well Name and No.
ROSA UNIT #210

9. API Well No.
30-039-24523

10. Field and Pool, or Exploratory Area
BASIN FRUITLAND COAL

11. County or Parish, State
RIO ARRIBA, NM

CHECK APPROPRIATE BOX(S) TO INDICATE NATURE OF NOTICE, REPORT, OR OTHER DATA

TYPE OF SUBMISSION

- ☒ Notice of Intent
☐ Subsequent Report
☐ Final Abandonment

TYPE OF ACTION

- ☐ Abandonment
☐ Recompletion
☐ Plugging Back
☐ Casing Repair
☐ Altering Casing
☒ Other Sidetrack & Cavitation

- ☐ Change of Plans
☐ New Construction
☐ Non-Routine Fracturing
☐ Water Shut-Off
☐ Conversion to Injection
☐ Dispose Water

(Note: Report results of multiple completion on Well Completion or Recompletion Report and Log form.)

13. Describe Proposed or Completed Operations (Clearly state all pertinent details, and give pertinent dates, including estimated date of starting any proposed work. If well is directionally drilled, give subsurface locations and measured and true vertical depths for all markers and zones pertinent to this work.)*

Williams Production Company plans to sidetrack & cavitate this well as per the attached procedure. Estimated start date 9/4/1999.

14. I hereby certify that the foregoing is true and correct

Signed

Tracy Ross
TRACY ROSS

Title Production Analyst

Date August 11, 1999

(This space for Federal or State office use)

Approved by

[Signature]

Title

Date

AUG 30 1999

Conditions of approval, if any:

Title 18 U.S.C. Section 1001, makes it a crime for any person knowingly and willfully to make to any department or agency of the United States any false, fictitious or fraudulent statements or representations as to any matter within its jurisdiction.

AMOC



Exploration & Production
Pertinent Data Sheet

Rosa #210

DATE: 8/5/1999

WELLNAME: ROSA UNIT #210

FIELD: Basin Fruitland Coal

LOCATION: 1025' FSL, 1310' FWL, Sec. 13, T31N, R06W

ELEVATION: 6263'

PBTD:

TOTAL DEPTH: 3330'

COUNTY: Rio Arriba

State: New Mexico

DATE COMPLETED: 10/24/90

CASINGTYPE	CASING SIZE	HOLE SIZE	WEIGHT/ GRADE	DEPTH	CEMENT	TOP
Surface	9-5/8"	12-1/4"	36.0#, K-55	228'	189sx	Surface
Intermediate	7"	8-3/4"	23#, K-55	2951'	1092sx	Surface
Prod. Liner	5-1/2"	6-1/4"	15.5#, J-55	2888'-3107'	Open hole	No cement

TUBING EQUIPEMENT: 96 of JTS 2-3/8", J-55 8rd EUE w/ perforated joint on bottom @ 3062'. Total of 97 jts. New tbg 5/9/97.

FORMATION TOPS:

Ojo Alamo 2363
Kirtland 2463
Fruitland 2959

LOGGING RECORD: GR-CDL-CNL-Hi RES COAL LOG

PERFORATIONS: Coal: (4spf) 166' of perforations 2939'-3105'.

STIMULATION: Initially circulated and ran sweeps for 3days. 4/18/91-4/21/91.

PRODUCTION HISTORY: Cum 220,000 MCF. Well was shown improving production since Sep '96.
Currently producing 500 MCFD.

LAH 8/5/99

8-5-99

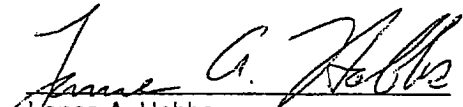
WILLIAMS PRODUCTION COMPANY
SIDETRACK & CAVITATION PROGNOSIS
ROSA 210

Purpose: To pull liner and cavitate the Fruitland Coal zone.

1. Notify BLM 24 hours to moving in.
2. MIRUSU. Nipple up pneumatic actuated BOPs, 2 blooie lines, pneumatic working valves and 2 - 7" blooie lines. Anchor blooie lines securely. Test BOPs. Fill rig tank with produced water. Do not filter water unless necessary.
3. Rig up air package, 1800 cfm minimum.
4. TIH and tag fill. CO fill if necessary. TOOH w/ 2-3/8" tubing and LD.
5. Pick up rotary shoe, bumper sub, jars, 6-1/4" mill and 4-3/4" drill collars on 3-1/2" drill pipe and TIH. Mill the hold down slips off the liner. TOOH Pick up a spear and the fishing tool assembly and TIH. Spear into liner top and jar liner loose.
6. TOOH w/ 5-1/2" liner and LD. Re use any joints if possible.
7. PU 6-1/4" bit on 3-1/2" DP and TIH. Clean out to TD (3108') TOOH.
8. PU 7" X 9-1/4" Underreamer and underream open hole from 7" shoe (2951') to TD (3108').
9. TIH w/ 6-1/4" bit on 3-1/2" DP and circulate out fill.

CAVITATION

10. Run 5 to 10 bbl sweeps using 1 GPB soap if necessary.
11. PU bit inside 7" casing. Pressure up hole to 2500 psi (maximum pressure) then open to atmosphere. Repeatedly surge well. SI for buildup after surging about 5 times.
12. Record any breaks. Record accurate buildup pressure and pitot gauges after each cycle. Repeat until gas production no longer increases, 2 - 3 weeks.
13. TOH w/ bit and DP.
14. Notify Dante Vescovi with TIW to run liner.
15. PU 5-1/2" liner on 3-1/2" DP. Run in with JGS liner hanger with left hand threads and L A set shoe on bottom of liner. Rotate down if necessary. Land liner @ 3108' with 100' overlap in 7". TOOH w/ DP and LD.
16. RU Blue Jet and perforate liner.
17. PU 2-3/8", 4.7#, J-55, 8rd, EUE tbg and TIH and land tubing @ 3300'.
18. ND BOP and NU wellhead. Shut well in for buildup.
20. RDSU. Clean up location and move.


Lance A. Hobbs
Engineer, Production & Drilling

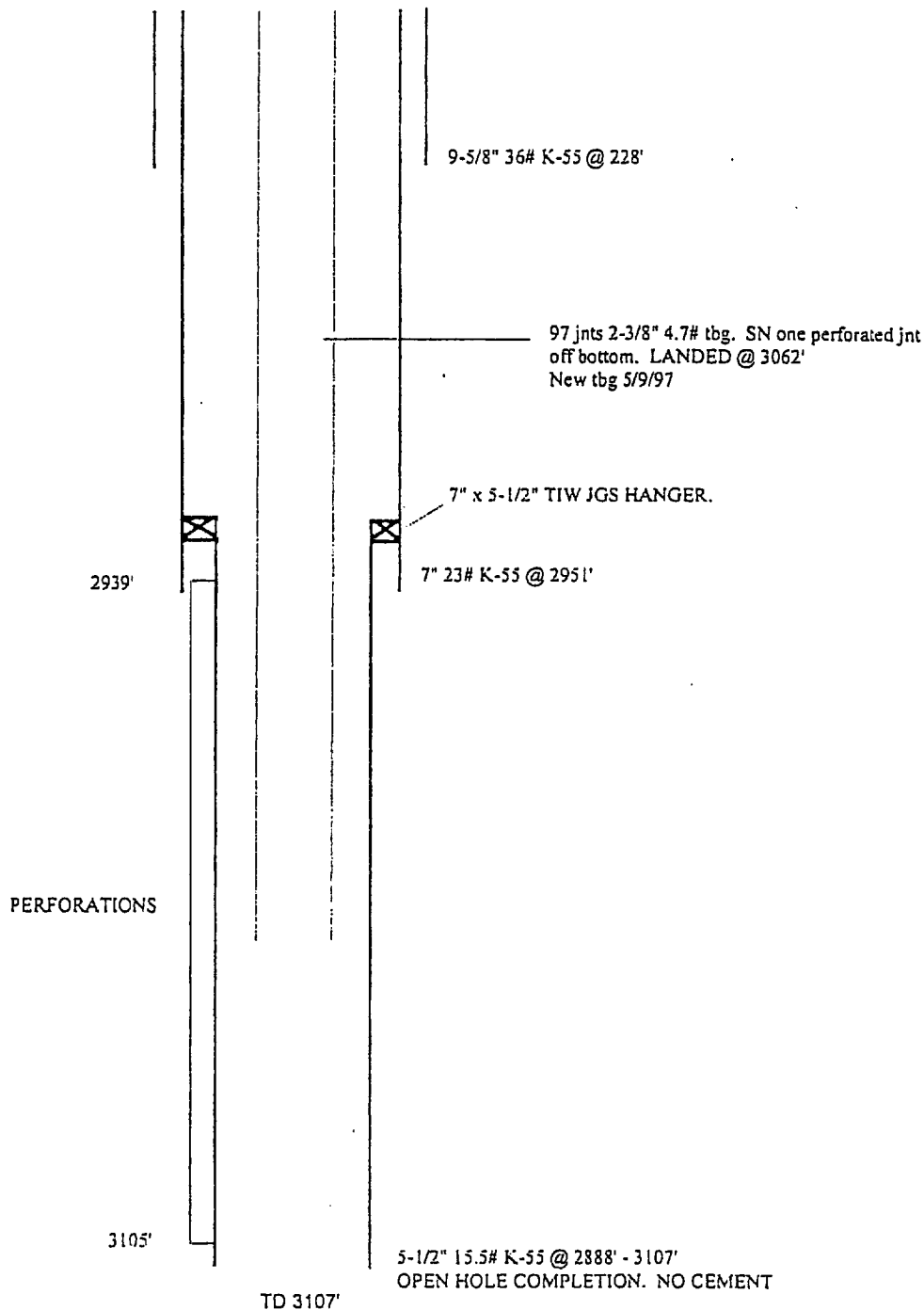
WELLBORE DIAGRAM

ROSA #210 FRT COAL

Location: 1025' FSL, 1310' FWL
SW/4 SW/4 Section 13, T31N, R6W
Rio Arriba Co., NM

Elevation = 6270' GR
KB = 12'

TOPS	DEPTH
OJO ALAMO	2363'
KIRTLAND	2463'
FRUITLAND	2958'



HOLE SIZE	CASING	CEMENT	TOP OF CMT
12-1/4"	9-5/8" 36#	189 sx	SURFACE
8-3/4"	7" 23#	1092 sx	SURFACE
6-1/4"	5-1/2" 15.5#	N/A	N/A



ROCKY MOUNTAIN GEO-ENGINEERING CO.

WELL SITE GEOLOGY — MUD LOGGING

2450 INDUSTRIAL BLVD.

PHONE (303) 243-3044

GRAND JUNCTION, CO 81505

COMPANY MERIDIAN OIL INC.

WELL ROSA UNIT # 210

FIELD BASIN FRUITLAND COAL

ELEVATION GL 6263' KB 6276'

1025' FSL 1310' FWL
LOCATION SEC 13 T31N R5W

COUNTY RIO ARriba

STATE NEW MEXICO

DRILLING FLUID H2O

DEPTH LOGGED FROM TO
2958' - 3108'

DATE LOGGED 4/16/91 - 4/16/91

ENGINEERS

STEVEN M THIBODEAUX



SHALE



DOLOMITE



COAL



ANHY-GYP



SANDSTONE



CHERT



SILTSTONE

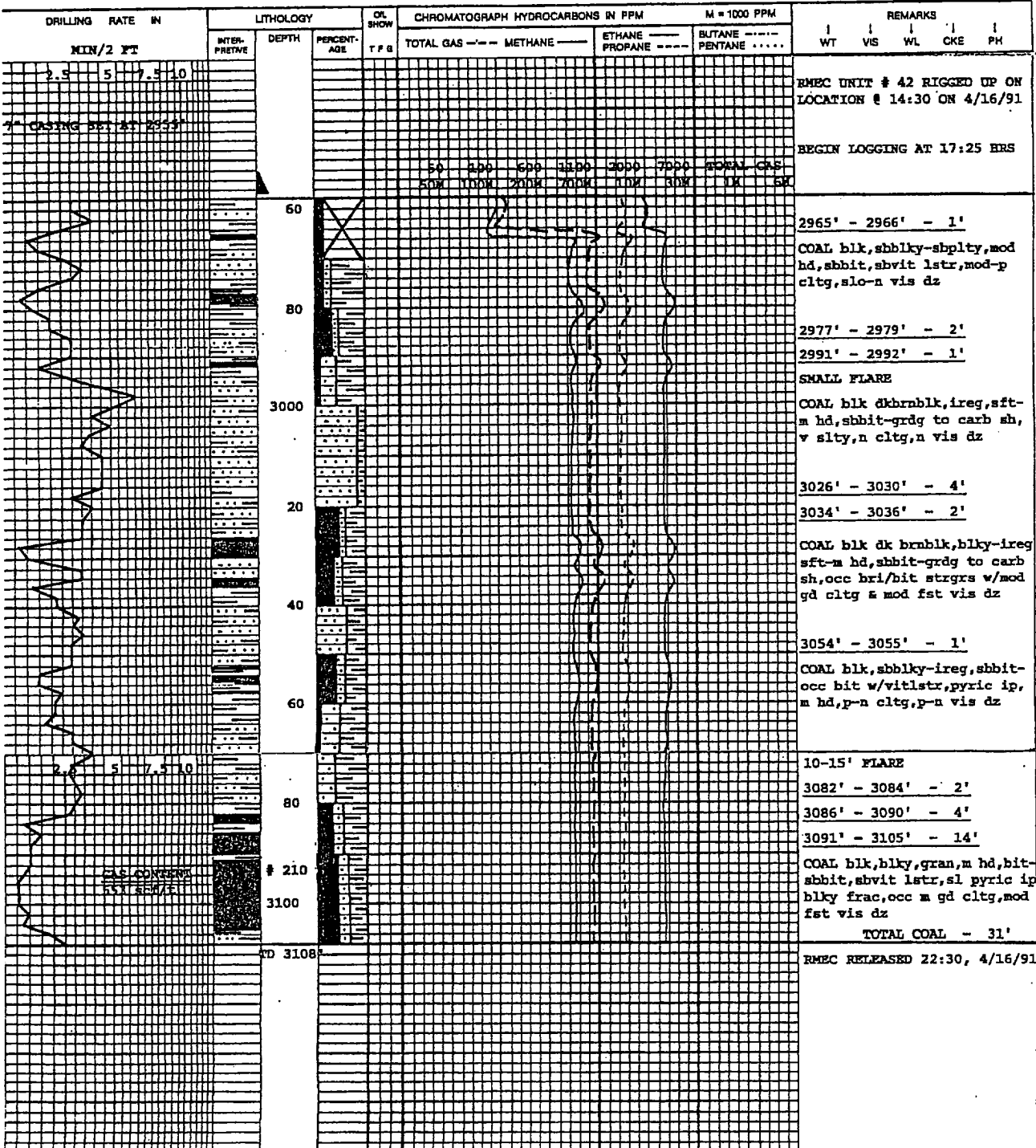


LIMESTONE



SALT

DTG - DOWN TIME GAS
DST - DRILL STEM TEST
SLM - STEEL LINE MEAS.
LAT - LOGGED AFTER TRIP
WOB - WEIGHT ON BIT
RPM - REVOLUTIONS/MIN.
SPM - STROKES/MIN.
PP - PUMP PRESSURE
C - DEVIATION
TG - TRIP GAS
CG - CONNECTION GAS
NB - NEW BIT
NR - NO RETURNS
CO - CIRCULATE OUT
NS - NO SAMPLE
RR - RERUN
CB - CORE BIT
O - SHOW REPORT





Exploration & Production
Perforation Sheet

Rosa Unit #210

DATE: 8/5/1999

WELLNAME: ROSA UNIT #210

FIELD: Basin Fruitland Coal

LOCATION: 1025' FSL, 1310' FWL, Sec. 13, T31N, R06W ELEVATION: 6263'

PBTD: TOTAL DEPTH: 3108'

COUNTY: Rio Arriba State: New Mexico

The production liner will be perforated with 4 spf (four shots per foot) at the following depths:

<u>Depth</u>	<u>Total Footage</u>	<u>Total Shots</u>
2965' - 2966'	1'	4
2977' - 2979'	2'	8
2991' - 2992'	1'	4
3026' - 3030'	4'	16
3034' - 3036'	2'	8
3054' - 3055'	1'	4
<u>3082' - 3105'</u>	<u>23'</u>	<u>92</u>
TOTAL	34'	136

LAH 8/5/99