

UNITED STATES  
DEPARTMENT OF THE INTERIOR  
BUREAU OF LAND MANAGEMENT

APPLICATION FOR PERMIT TO DRILL, DEEPEN, OR PLUG BACK

1a. TYPE OF WORK  
DRILL ☒ DEEPEN ☐ PLUG BACK ☐  
b. TYPE OF WELL  
OIL WELL ☐ GAS WELL ☒ OTHER ☐ SINGLE ZONE ☐ MULTIPLE ZONE ☐  
2. NAME OF OPERATOR  
Northwest Pipeline Corporation  
3. ADDRESS OF OPERATOR  
3539 East 30th Street - Farmington, NM 87401  
4. LOCATION OF WELL (Report location clearly and in accordance with any State requirements.\*)  
At surface 1285' FNL & 880' FEL NE/4 NE/4  
At proposed prod. zone Same

5. LEASE DESIGNATION AND SERIAL NO.  
SF 078999  
6. IF INDIAN, ALLOTTEE OR TRIBE NAME  
7. UNIT AGREEMENT NAME  
San Juan 31-6 Unit  
8. FARM OR LEASE NAME  
San Juan 31-6 Unit  
9. WELL NO.  
#230  
10. FIELD AND POOL, OR WILDCAT  
Basin Fruitland Pool  
11. SEC., T., R., M., OR BLK.  
AND SURVEY OR AREA  
A  
Sec. 27, T31N, R6W  
12. COUNTY OR PARISH  
Rio Arriba  
13. STATE  
New Mexico

15. DISTANCE FROM PROPOSED\* LOCATION TO NEAREST PROPERTY OR LEASE LINE, FT.  
(Also to nearest drlg. unit line, if any) 880'  
16. NO. OF ACRES IN LEASE 2560  
17. NO. OF ACRES ASSIGNED TO THIS WELL 320  
18. DISTANCE FROM PROPOSED LOCATION\* TO NEAREST WELL, DRILLING, COMPLETED, OR APPLIED FOR, ON THIS LEASE, FT. 500'  
19. PROPOSED DEPTH 3185'  
20. ROTARY OR CABLE TOOLS Rotary  
21. ELEVATIONS (Show whether DF, RT, GR, etc.) 6320' GR  
22. APPROX. DATE WORK WILL START\* 8-22-89  
23. PROPOSED CASING AND CEMENTING PROGRAM  
SUBJECT TO COMPLIANCE WITH ATTACHED "GENERAL REQUIREMENTS".  
This action is subject to technical and procedural review pursuant to 43 CFR 3165.3 and applicable to 43 CFR 3165.4.

SIZE OF HOLE	SIZE OF CASING	WEIGHT PER FOOT	SETTING DEPTH	
13-1/2"	9-5/8"	36# K-55	200'	195 cu.ft.
8-3/4"	7"	20# K-55	2935'	148 cu.ft.
6-1/4"	5-1/2"	23# P110	2955'-3185'	None

- 1) Plan to drill Fruitland Formation from 2955' to 3185' and complete open hole with a perforated liner in coal zones.
- 2) The east half of Section 27 is dedicated to this well.

RECEIVED

OCT 11 1989

CON. DIV.

DIST. 3

IN ABOVE SPACE DESCRIBE PROPOSED PROGRAM: If proposal is to deepen or plug back, give data on present production and proposed new productive zone. If proposal is to drill or deepen directionally, give pertinent data on subsurface locations and measured and true vertical depths. Give blowout preventer program, if any.

24. SIGNED J.R. Vaughan TITLE Prod. & Drlg. Engineer DATE 8-1-89  
(This space for Federal or State office use)

PERMIT NO. \_\_\_\_\_ APPROVAL DATE \_\_\_\_\_

APPROVED BY \_\_\_\_\_ TITLE \_\_\_\_\_ DATE OCT 06 1989  
CONDITIONS OF APPROVAL, IF ANY: \_\_\_\_\_

APPROVED  
AS AMENDED  
OCT 06 1989  
AREA MANAGER

\*See Instructions On Reverse Side

Submit to Appropriate  
District Office  
State Lease - 4 copies  
Fee Lease - 3 copies

State of New Mexico  
Energy, Minerals and Natural Resources Department

NORTHWEST PIPELINE  
CORPORATION Form C-102  
Revised 11-1-89

OIL CONSERVATION DIVISION

P.O. Box 2088  
Santa Fe, New Mexico 87504-2088

JUN 29 1989

PRODUCTION AND DRILLING

DISTRICT I  
P.O. Box 1980, Hobbs, NM 88240

DISTRICT II  
P.O. Drawer DD, Artesia, NM 88210

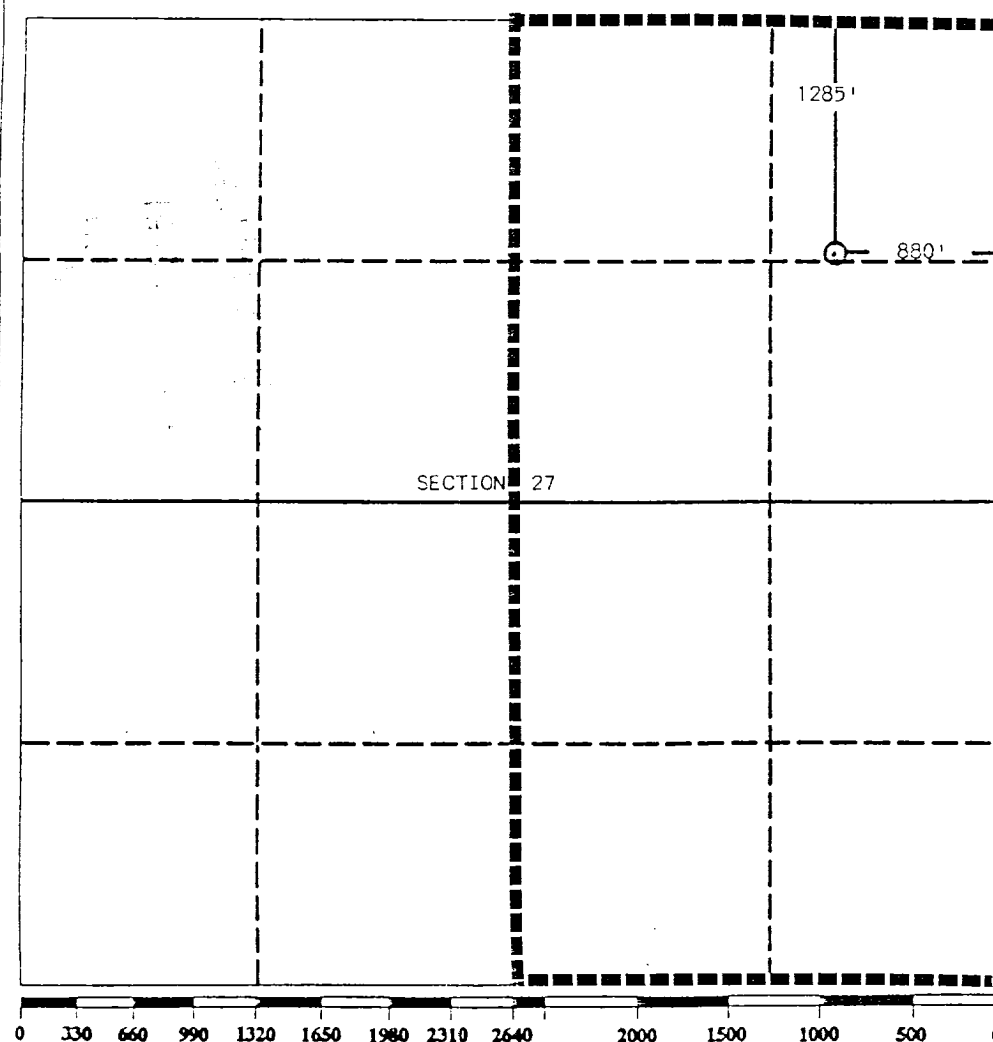
DISTRICT III  
1000 Rio Brazos Rd., Aztec, NM 87410

WELL LOCATION AND ACREAGE DEDICATION PLAT

All Distances must be from the outer boundaries of the section

Operator Northwest Pipeline Corporation			Lease San Juan 31-6		Well No. 230
Unit Letter A	Section 27	Township 31 North	Range 6 West	County Rio Arriba	
Actual Footage Location of Well: 1285 feet from the North line and 880 feet from the East line					
Ground level Elev. 6320	Producing Formation Fruitland	Pool Basin Fruitland Pool		Dedicated Acreage: 320 Acres	

1. Outline the acreage dedicated to the subject well by colored pencil or hatchure marks on the plat below.
2. If more than one lease is dedicated to the well, outline each and identify the ownership thereof (both as to working interest and royalty).
3. If more than one lease of different ownership is dedicated to the well, have the interest of all owners been consolidated by communitization, unitization, force-pooling, etc.?  
☒ Yes ☐ No If answer is "yes" type of consolidation Unitization  
If answer is "no" list the owners and tract descriptions which have actually been consolidated. (Use reverse side of this form if necessary.)  
No allowable will be assigned to the well until all interests have been consolidated (by communitization, unitization, forced-pooling, or otherwise) or until a non-standard unit, eliminating such interest, has been approved by the Division.



OPERATOR CERTIFICATION  
I hereby certify that the information contained herein is true and complete to the best of my knowledge and belief.

Signature  
*Jeff Vaughan*  
Printed Name  
Jeff Vaughan  
Position  
Engineer  
Company  
Northwest Pipeline Corp.  
Date  
July 10, 1989

SURVEYOR CERTIFICATION  
I hereby certify that the well location shown on this plat was plotted from field notes of actual surveys made by me or under my supervision, and that the same is true and correct to the best of my knowledge and belief.

Date Surveyed  
26, 1989  
Signature of Seal of  
Professional Surveyor  
EDGEE  
NEW MEXICO  
5979  
Edgemoor, L.S.

# BANCOS MESA NW, N. MEX.

(FORMERLY ROSA)

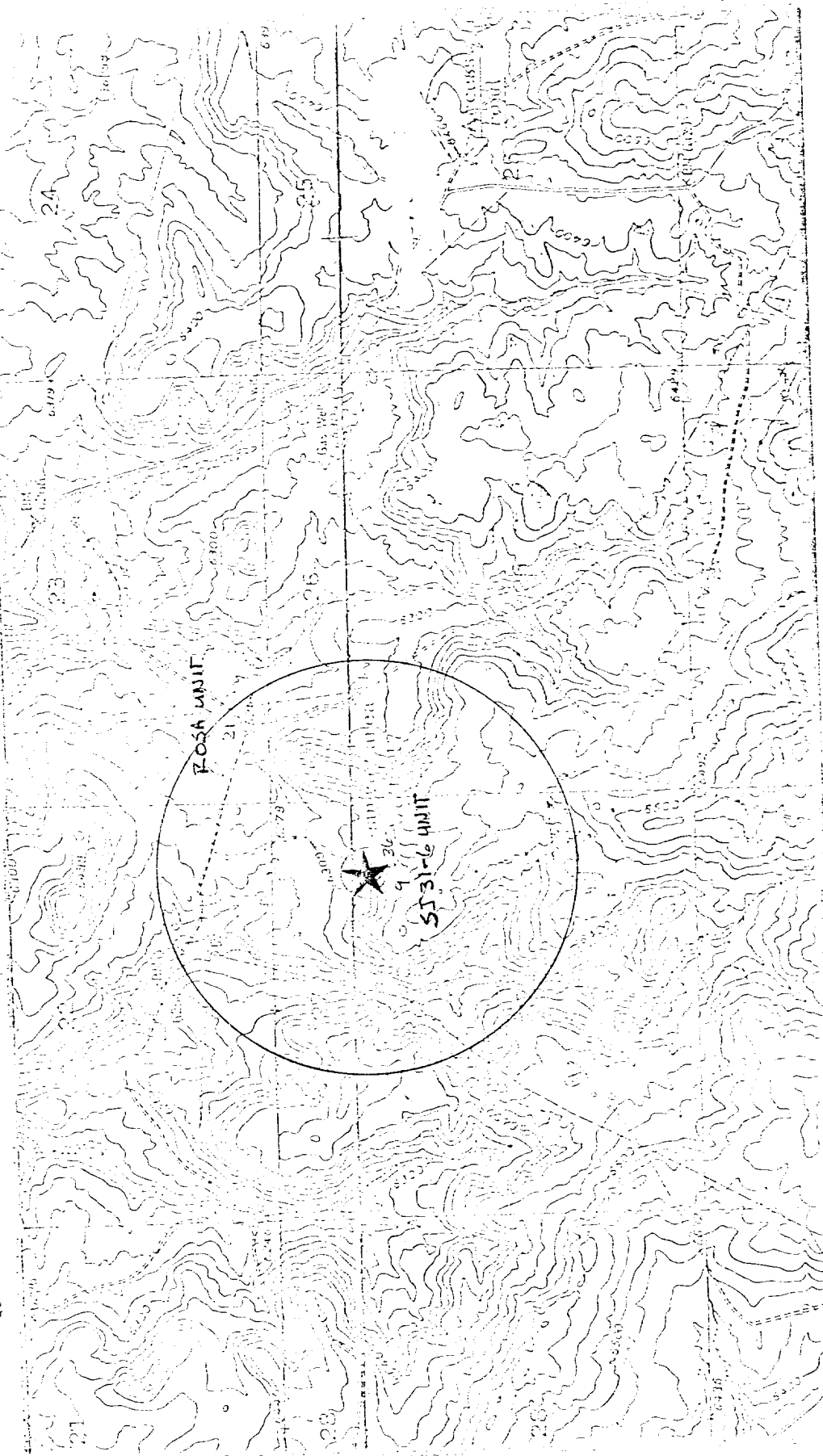
N3645-W10722.5/7.5

1954

PHOTO-REVISED 1982

QUADRANGLE LOCATION

NEW MEXICO



GOMEZ RANCH, N. MEX.

N3645-W10722.5/7.5

1954

PHOTO-REVISED 1982

SCALE 1:24,000

1 MILE



CONTOUR INTERVAL 20 FEET