

Submit to Appropriate  
District Office  
State Lease -- 6 copies  
Fee Lease -- 5 copies

State of New Mexico  
Energy, Minerals and Natural Resources Department

Form C-101  
Revised 1-1-89

**OIL CONSERVATION DIVISION**

**DISTRICT I**  
P.O. Box 1980, Hobbs, NM 88240

P.O. Box 2088

Santa Fe, New Mexico 87504-2088

**DISTRICT II**  
P.O. Drawer DD, Artesia, NM 88210

**DISTRICT III**  
1000 Rio Brazos Rd., Aztec, NM 87410

API NO. (assigned by OCD on New Wells)

9-239-24937 ✓

5. Indicate Type of Lease

STATE ☒ FEE ☐

6. State Oil & Gas Lease No.

NM E-347-39

**APPLICATION FOR PERMIT TO DRILL, DEEPEN, OR PLUG BACK**

1a. Type of Work:

DRILL ☒ RE-ENTER ☐ DEEPEN ☐ PLUG BACK ☐

b. Type of Well:

OIL WELL ☐ GAS WELL ☒ OTHER ☐ SINGLE ZONE ☐ MULTIPLE ZONE ☐

2. Name of Operator

Northwest Pipeline Corporation

3. Address of Operator

3539 East 30th Street - Farmington, NM 87402

7. Lease Name or Unit Agreement Name

San Juan 31-6 Unit

8. Well No.

#214 (E/225)

9. Pool name or Wildcat

Basin Fruitland Coal

4. Well Location

Unit Letter G : 1560 Feet From The North Line and 981 Feet From The East Line

Section 36 Township 31N Range 6W NMPM Rio Arriba County

10. Proposed Depth

3314'

11. Formation

Fruitland

12. Rotary or C.T.

Rotary

13. Elevations (Show whether DF, RT, GR, etc.)

6525' GR

14. Kind & Status Plug. Bond

Surety-Current

15. Drilling Contractor

16. Approx. Date Work will start

November 1, 1990

17.

**PROPOSED CASING AND CEMENT PROGRAM**

SIZE OF HOLE	SIZE OF CASING	WEIGHT PER FOOT	SETTING DEPTH	SACKS OF CEMENT	EST. TOP
13-1/2"	9-5/8"	36# K-55	200'	120 sx	
8-3/4"	7"	23# K-55	3175'	440 sx	
6-1/4"	5-1/2"	23# P110	3075'-3314'	Open hole	

1) Plan to drill Fruitland and set liner in open hole. If open hole proves unproductive, the 5-1/2" liner will be changed to 15.5#, K-55, cemented and hydraulically stimulated as necessary.

2) The east half of Section 36 is dedicated to this well.

**RECEIVED**  
SEP 24 1990  
OIL CON. DIV  
DIST. 3

IN ABOVE SPACE DESCRIBE PROPOSED PROGRAM: IF PROPOSAL IS TO DEEPEN OR PLUG BACK, GIVE DATA ON PRESENT PRODUCTIVE ZONE AND PROPOSED NEW PRODUCTIVE ZONE. GIVE BLOWOUT PREVENTER PROGRAM, IF ANY.

I hereby certify that the information above is true and complete to the best of my knowledge and belief.

SIGNATURE Mark McCallister TITLE Production Superintendent DATE 9-21-90

TYPE OR PRINT NAME Mark McCallister TELEPHONE NO. 327-5351

(This space for State Use)

APPROVED BY Edna Bailey DEPUTY OIL & GAS INSPECTOR, DIST. #3 DATE 9-25-90

CONDITIONS OF APPROVAL, IF ANY:

APPROVAL EXPIRES 3-25-91  
UNLESS DRILLING IS COMMENCED.  
SPUD NOTICE MUST BE SUBMITTED  
WITHIN 10 DAYS.

Hobbs C-104 FOR NSP

Submit to Appropriate  
District Office  
State Lease - 4 copies  
Fee Lease - 3 copies

State of New Mexico  
Energy, Minerals and Natural Resources Department

Form C-102  
Revised 1-1-89

OIL CONSERVATION DIVISION

P.O. Box 2088  
Santa Fe, New Mexico 87504-2088

DISTRICT I  
P.O. Box 1980, Hobbs, NM 88240

DISTRICT II  
P.O. Drawer DD, Artesia, NM 88210

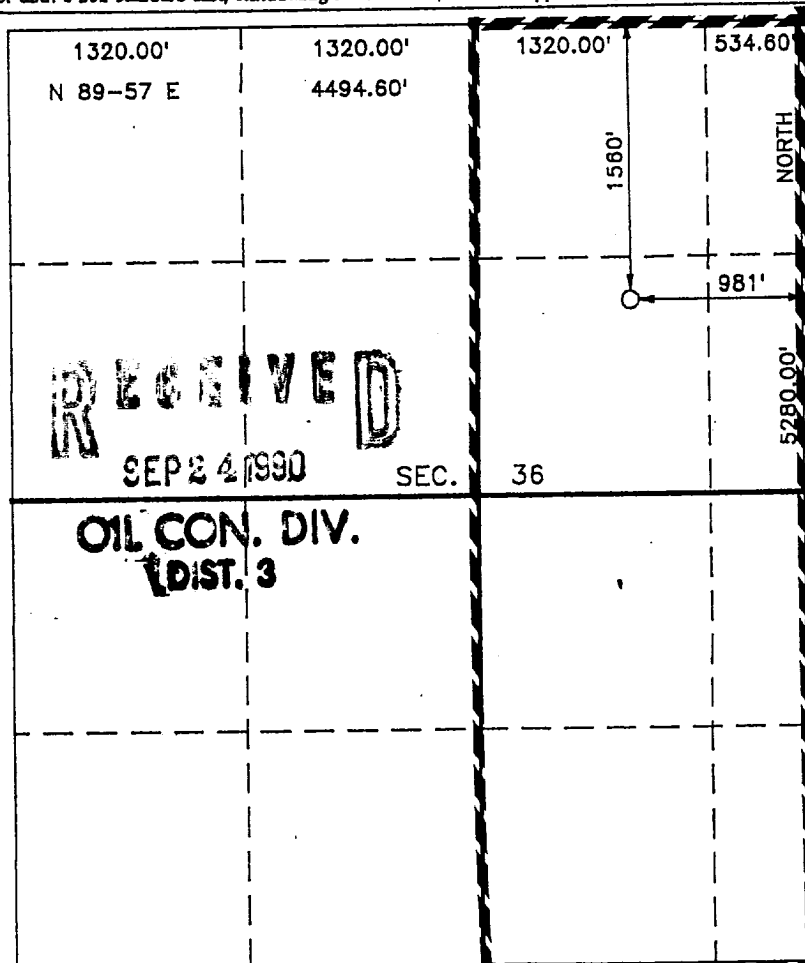
DISTRICT III  
1000 Rio Brazos Rd., Aztec, NM 87410

WELL LOCATION AND ACREAGE DEDICATION PLAT

All Distances must be from the outer boundaries of the section

Operator <b>NORTHWEST PIPELINE CORP.</b>		Lease <b>SAN JUAN 31-6 UNIT</b>		Well No. <b>214</b>
Unit Letter <b>G</b>	Section <b>36</b>	Township <b>T.31 N.</b>	Range <b>R.6 W.</b>	County <b>RIO ARriba COUNTY</b>
Actual Footage Location of Well: <b>1560</b> feet from the <b>NORTH</b> line and <b>981</b> feet from the <b>EAST</b> line				
Ground level Elev. <b>6525</b>	Producing Formation <b>Fruitland</b>	Pool <b>Basin Fruitland Coal</b>	Dedicated Acreage: <b>225</b> Acres	

1. Outline the acreage dedicated to the subject well by colored pencil or hatchure marks on the plat below.
2. If more than one lease is dedicated to the well, outline each and identify the ownership thereof (both as to working interest and royalty).
3. If more than one lease of different ownership is dedicated to the well, have the interest of all owners been consolidated by communitization, unitization, force-pooling, etc.?  
☒ Yes ☐ No If answer is "yes" type of consolidation unitized  
If answer is "no" list the owners and tract descriptions which have actually been consolidated. (Use reverse side of this form if necessary.)  
No allowable will be assigned to the well until all interests have been consolidated (by communitization, unitization, forced-pooling, or otherwise) or until a non-standard unit, eliminating such interest, has been approved by the Division.



OPERATOR CERTIFICATION

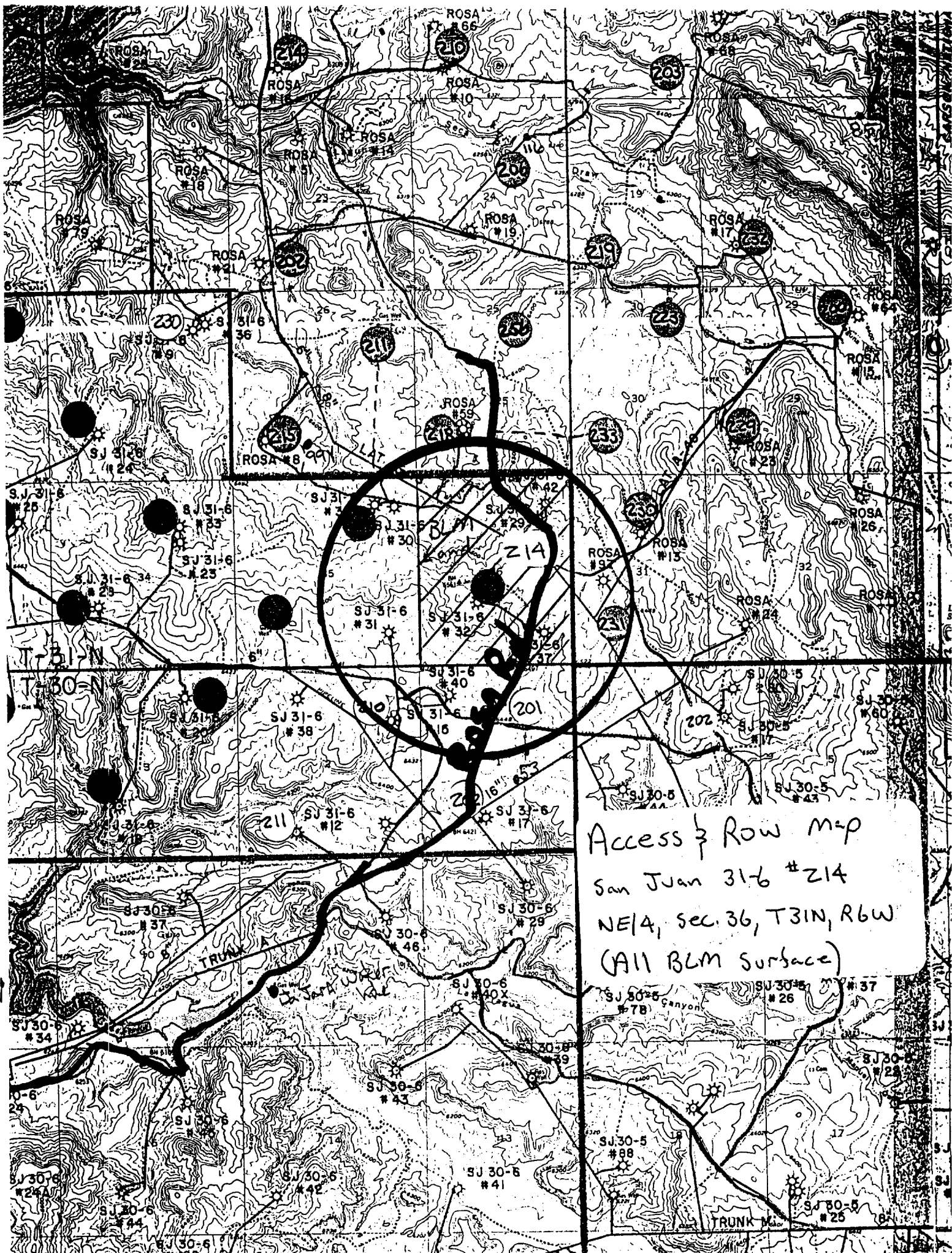
I hereby certify that the information contained herein is true and complete to the best of my knowledge and belief.

Signature  
*Mike Turnbaugh*  
Printed Name  
**Mike Turnbaugh**  
Position  
**Production Superintendent**  
Company  
**Northwest Pipeline Corp.**  
Date  
**9-10-90**

SURVEYOR CERTIFICATION

I hereby certify that the well location shown on this plat was plotted from field notes of actual surveys made by me or under my supervision, and that the same is true and correct to the best of my knowledge and belief.

Date Surveyed  
**JULY 24 1990**  
Signature of Professional Land Surveyor  
*R. J. Daggert*  
Professional Land Surveyor  
Registered Professional Land Surveyor



Access 3 Row map  
San Juan 31-6 #Z14  
NE1/4, sec. 36, T31N, R6W  
(All BLM surface)