

UNITED STATES  
DEPARTMENT OF THE INTERIOR  
BUREAU OF LAND MANAGEMENT

APPLICATION FOR PERMIT TO DRILL, DEEPEN, OR PLUG BACK

**RECEIVED**  
OCT 25 1990  
OIL CON. DIV.  
DIST. 3

1a. TYPE OF WORK  
DRILL

1b. TYPE OF WELL  
GAS

2. OPERATOR  
MERIDIAN OIL INC.

3. ADDRESS & PHONE NO. OF OPERATOR  
P O BOX 4289  
FARMINGTON, NM 87499

4. LOCATION OF WELL  
2075' FNL 1990' FEL

5. LEASE NUMBER  
SF-078770

6. IF INDIAN, ALL. OR TRIBE NAME

7. UNIT AGREEMENT NAME  
ROSA UNIT

8. FARM OR LEASE NAME  
ROSA UNIT

9. WELL NO.  
265

10. FIELD, POOL, OR WILDCAT  
BASIN FRUITLAND COAL

11. SEC. T. R. M OR BLK.  
G SEC. 27 T31N R05W NMPM

14. DISTANCE IN MILES FROM NEAREST TOWN  
17 MI FROM NAVAJO DAM PO

12. COUNTY  
RIO ARRIBA

13. STATE  
NM

15. DISTANCE FROM  
PROPOSED LOCATION 1990'  
TO NEAREST PROPERTY  
OR LEASE LINE.

16. ACRES IN LEASE  
2560

17. ACRES ASSIGNED TO WELL  
320.00

18. DISTANCE FROM  
PROPOSED LOCATION  
TO NEAREST WELL DR. 3700'  
COMPL., OR APPLIED  
FOR ON THIS LEASE

19. PROPOSED DEPTH  
3410'

20. ROTARY OR CABLE TOOLS  
ROTARY

21. ELEVATIONS (DF, FT, GR, ETC.)  
6524' GL

22. APPROX. DATE WORK WILL START

23. PROPOSED CASING AND CEMENTING PROGRAM

\*SEE OPERATIONS PLAN

24. AUTHORIZED BY: John Caldwell  
REG. DRILLING ENGR.

8/31/90  
DATE

PERMIT NO. \_\_\_\_\_ APPROVAL DATE \_\_\_\_\_

**APPROVED**  
**AS AMENDED**

APPROVED BY \_\_\_\_\_ TITLE \_\_\_\_\_ DATE \_\_\_\_\_

NOTE: THIS FORMAT IS ISSUED IN LIEU OF US BLM FORM 3160-3.

*Hold C-104 For USC @ NMOC*

Submit to Appropriate  
District Office  
State Lease - 4 copies  
Fee Lease - 3 copies

State of New Mexico  
Energy, Minerals and Natural Resources Department

Form C-182  
Revised 1-1-89

OIL CONSERVATION DIVISION

P.O. Box 2088

Santa Fe, New Mexico 87504-2088

DISTRICT I

P.O. Box 1980, Hobbs, NM 88240

DISTRICT II

P.O. Drawer DD, Artesia, NM 88210

DISTRICT III

1000 Rio Brancos Rd., Aztec, NM 87410

WELL LOCATION AND ACREAGE DEDICATION PLAT

All Distances must be from the outer boundaries of the section

Operator Meridian Oil Inc.			Lease Rosa Unit (SF-078770)		Well No. 265
Unit Letter G	Section 27	Township 31 North	Range 5 West	County NM	Rio Arriba
Actual Footage Location of Well: 2075 feet from the North line and 1990 feet from the East line					
Ground level Elev. 6524'	Producing Formation Fruitland Coal		Pool Basin	Dedicated Acreage: 320.00 Acres	

- Outline the acreage dedicated to the subject well by colored pencil or inkline marks on the plat below.
- If more than one lease is dedicated to the well, outline each and identify the ownership thereof (both as to working interest and royalty).
- If more than one lease of different ownership is dedicated to the well, have the interest of all owners been consolidated by communitization, unitization, force-pooling, etc.?  
☒ Yes ☐ No If answer is "yes" type of consolidation unitization  
If answer is "no" list the owners and tract descriptions which have actually been consolidated. (Use reverse side of this form if necessary.)  
No allowable will be assigned to the well until all interests have been consolidated (by communitization, unitization, force-pooling, or otherwise) or until a non-standard unit, eliminating such interest, has been approved by the Division.

RECEIVED  
OCT 25 1990  
OIL CON. DIV.  
DIST. 3

OPERATOR CERTIFICATION

I hereby certify that the information herein is true and complete to the best of my knowledge and belief.

*Peggy Bradfield*  
Signature

Peggy Bradfield  
Printed Name

Regulatory Affairs  
Position

Meridian Oil Inc.  
Company

8-31-90  
Date

SURVEYOR CERTIFICATION

I hereby certify that the well location shown on this plat was plotted from field notes actual surveys made by me or under supervision, and that the same is true and correct to the best of my knowledge and belief.

8-17-90  
Date Surveyed

*Neale Edwards*  
Signature

NEALE EDWARDS  
REGISTERED LAND SURVEYOR  
6857  
6857  
Neale Edwards

Well Name: 265 ROSA UNIT  
 Sec. 27 T31N R05W  
 BASIN FRUITLAND COAL

2075' FNL 1990' FEL  
 RIO ARriba NEW MEXICO  
 Elevation 6524' GL

Formation tops: Surface- SAN JOSE

Ojo Alamo- 2645

Kirtland- 2825

Fruitland- 3210

Fruitland Coal Top- 3270

Fruitland Coal Base- 3399

Pictured Cliffs- 3415

Intermediate TD- 3230

Total Depth- 3410

Logging Program: Mud logs from intermediate to total depth.

Mud Program:	Interval	Type	Weight	Visc.	Fl. Loss
	0 - 200	Spud	8.4 - 8.9	40-50	no control
	200 - 3230	Non-dispersed	8.4 - 9.1	30-60	no control
	3230 - 3410	Formation Water	8.4		no control

Casing Program:	Hole Size	Depth Interval	Csg. Size	Weight	Grade
	12 1/4"	0 - 200	9 5/8"	32.3#	H-40
	8 3/4"	0 - 3230	7"	20.0#	K-55
	6 1/4"	3180 - 3410	5 1/2"	15.5#	K-55
Tubing Program:		0 - 3410	2 7/8"	6.5#	J-55

Float Equipment: 9 5/8" surface casing - saw tooth guide shoe. Centralizers will be run in accordance with Onshore Order #2.

7" intermediate casing - guide shoe and self-fill insert float valve. Three centralizers run every other joint above shoe. Run insert float one joint above the guide shoe. Two turbolizing type centralizers - one below and one into the base of the Ojo Alamo @ 2825'. Standard centralizers thereafter every fourth joint up to the base of the surface pipe.

5 1/2" production casing - float shoe on bottom and a pre-drilled liner run to the 7" casing with a minimum 50' overlap. Liner hanger is a double slip grip type.

Wellhead Equipment: 9 5/8" x 7" x 2 7/8" x 11" 3000 psi xmas tree assembly.

#### Cementing:

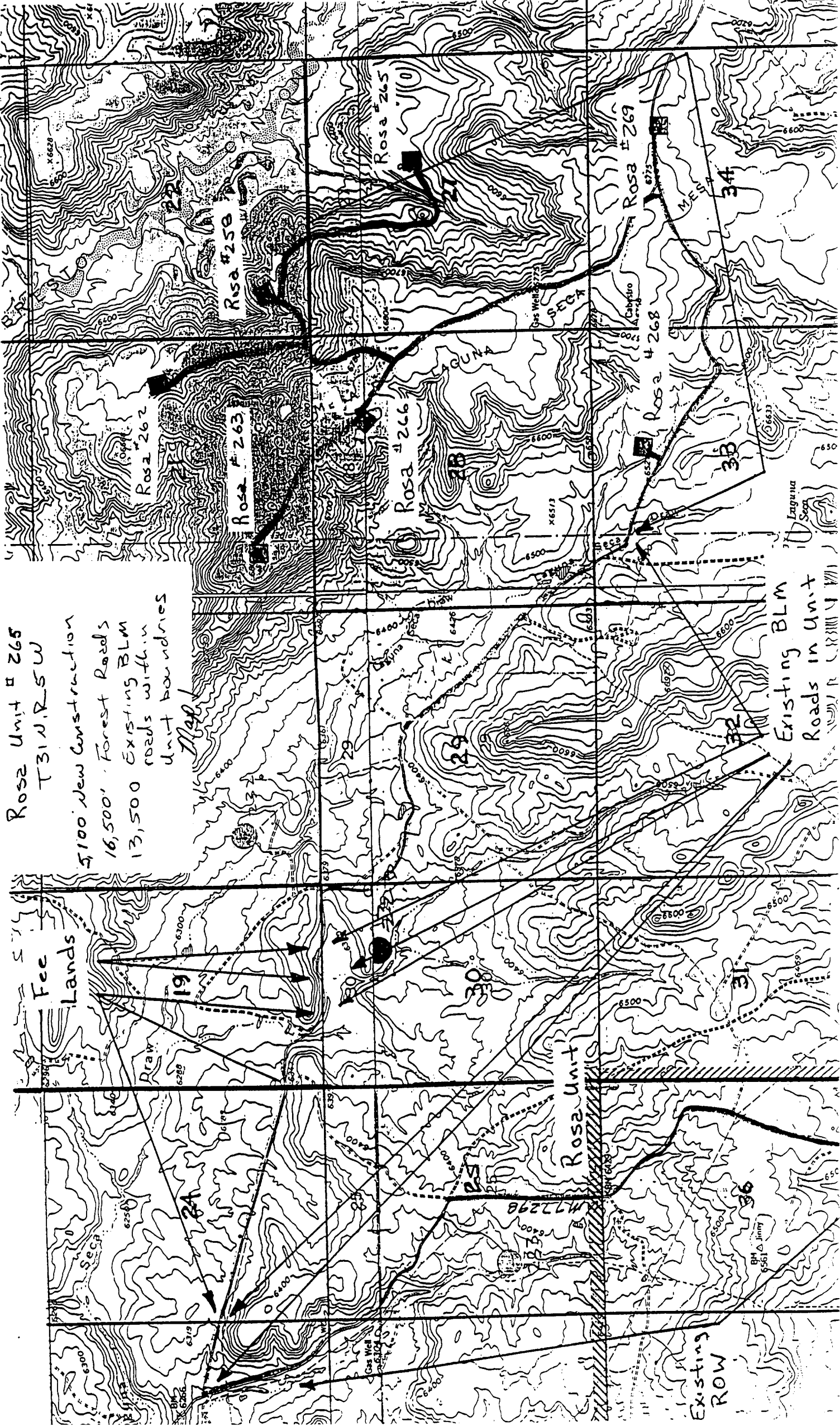
9 5/8" surface casing - cement with 160 sacks of class "B" cement with 1/4# flocele/sack and 3% calcium chloride (189 cu ft. of slurry, 200% excess to circulate to surface). WOC 12 hours. Test casing to 600 psi for 30 minutes.

7" intermediate casing - lead with 472 sacks of 65/35 class "B" poz with 6% gel, 2% calcium chloride and 1/2 cu ft. Perlite/sack (10.3 gallons of water/sack) tail with 100 sacks of class "B" with 2% calcium chloride. 1030 cu ft. of slurry, 110% excess to circulate to surface. If hole conditions permit, a 600 ft spacer will be run ahead of the cement slurry to avoid mud contamination of the cement. WOC 12 hours. If cement does not circulate to surface, a temperature log will be run after 8 hours to determine TOC.

5 1/2" liner - do not cement.

Rosa Unit # 265  
T31N,R5W  
5,100 New Construction  
16,500' Forest Roads  
13,500 Existing BLM  
roads within  
unit boundaries

Map



Existing BLM  
Roads in Unit

Existing  
ROW