

UNITED STATES
DEPARTMENT OF THE INTERIOR
BUREAU OF LAND MANAGEMENT

APPLICATION FOR PERMIT TO DRILL, DEEPEN, OR PLUG BACK

1a. TYPE OF WORK

DRILL ☒

DEEPEN ☐

PLUG BACK ☐

b. TYPE OF WELL

OIL
WELL ☐

GAS
WELL ☒

OTHER

SINGLE
ZONE ☒

MULTIPLE
ZONE ☐

2. NAME OF OPERATOR

MITCHELL ENERGY CORPORATION

3. ADDRESS OF OPERATOR

555 Seventeenth Street Suite #3500
Denver, CO 80202

4. LOCATION OF WELL (Report location clearly and in accordance with any State requirements.)*

At surface

110' FSL, 1622 FWL, Sec. 19, T31N-R4W

At proposed prod. zone

14. DISTANCE IN MILES AND DIRECTION FROM NEAREST TOWN OR POST OFFICE
This action is subject to technical and
procedural review pursuant to 43 CFR 3165.3
and appeal pursuant to 43 CFR 3165.4.

± 61 miles from Blanco, NM

10. DISTANCE FROM PROPOSED*

LOCATION TO NEAREST
PROPERTY OR LEASE LINE, FT.
(Also to nearest drlg. unit line, if any)

1622'

18. DISTANCE FROM PROPOSED LOCATION*
TO NEAREST WELL, DRILLING, COMPLETED,
OR APPLIED FOR, ON THIS LEASE, FT.

3700' Approx.

16. NO. OF ACRES IN LEASE

2560 2525.68

19. PROPOSED DEPTH

4000

17. NO. OF ACRES ASSIGNED
TO THIS WELL

20. ROTARY OR CABLE TOOLS

ROTARY

21. ELEVATIONS (Show whether DF, RT, GR, etc.)

6548' GR ✓

22. APPROX. DATE WORK WILL START*

August 30, 1991

23. PROPOSED CASING AND CEMENTING PROGRAM

SIZE OF HOLE	SIZE OF CASING	WEIGHT PER FOOT	SETTING DEPTH	QUANTITY OF CEMENT
12-1/4"	8-5/8"	24# K-55	500'	350 sxs - circ to surface
7-7/8"	5-1/2"	15.5# K-55	4000'	700 sxs - circ to surface

The operator proposes to drill to depth sufficient to test the Fruitland Formation. If productive, 5-1/2" casing will be run and set at ±4000'. If non-productive, the well will be plugged and abandoned consistent with Federal Regulations. Any zones above the Fruitland may be tested for productivity prior to Abandonment.

EXHIBITS ATTACHED

Ten Point Compliance Program

Surface Use and Operating Plan

Exhibit No. 1 Proposed Cementing Program

Exhibit No. 2 Blowout Preventer Schematic

Exhibit No. 3 Location Elevation Plat (Form C-102)

Exhibit No. 4 One Mile Radius Map (includes existing & planned roads,
sites, pipelines, and other facilities)

Exhibit No. 5 Production Facilities Layout

Exhibit No. 6 Drilling Rig Layout

IN ABOVE SPACE DESCRIBE PROPOSED PROGRAM: If proposal is to deepen or plug back, give data on present productive zone and proposed new productive zone. If proposal is to drill or deepen directionally, give pertinent data on subsurface locations and measured and true vertical depths. Give blowout preventer program, if any.

24.

SIGNED

TITLE

DATE

(This space for Federal or State office use)

PERMIT NO.

APPROVAL DATE

APPROVED BY

TITLE

CONDITIONS OF APPROVAL, IF ANY:

OIL CON. DIV. Hold C-104 for Chg Unit

DIS 3

NM005

See Instructions On Reverse Side

APPROVED
AS AMENDED

SEP 06 1991

AREA MANAGER

Submit to Appropriate
District Office
State Lease - 4 copies
Fee Lease - 3 copies

State of New Mexico
Energy, Minerals and Natural Resources Department

Form C-102
Revised 1-1-89

OIL CONSERVATION DIVISION

P.O. Box 2088
Santa Fe, New Mexico 87504-2088

RECEIVED EXHIBIT NO. 3
BLM PAGE 1 OF 2

DISTRICT I
P.O. Box 1980, Hobbs, NM 88240

DISTRICT II
P.O. Drawer DD, Artesia, NM 88210

DISTRICT III
1000 Rio Brazos Rd., Aztec, NM 87410

WELL LOCATION AND ACREAGE DEDICATION PLAT

All Distances must be from the outer boundaries of the section

MITCHELL ENERGY CORPORATION

ROSA UNIT NO. 345

SANTA FE, N.M.

Operator Mitchell Energy Corporation			Lease Rosa Unit		Well No. 345
Unit Letter N	Section 19	Township 31 North	Range 4 West	County Rio Arriba	
Actual Footage Location of Well: 110 feet from the South line and 1622 feet from the West line					
Ground level Elev. 6548	Producing Formation Fruitland		Basin Fruitland Coal		Dedicated Acreage: 320 3/4 Acres

1. Outline the acreage dedicated to the subject well by colored pencil or hardware marks on the plat below.

2. If more than one lease is dedicated to this well, outline each and identify the ownership thereof (both as to working interest and royalty).

3. If more than one lease of different ownership is dedicated to the well, have the interest of all owners been consolidated by communalization, unitization, force-pooling, etc.?

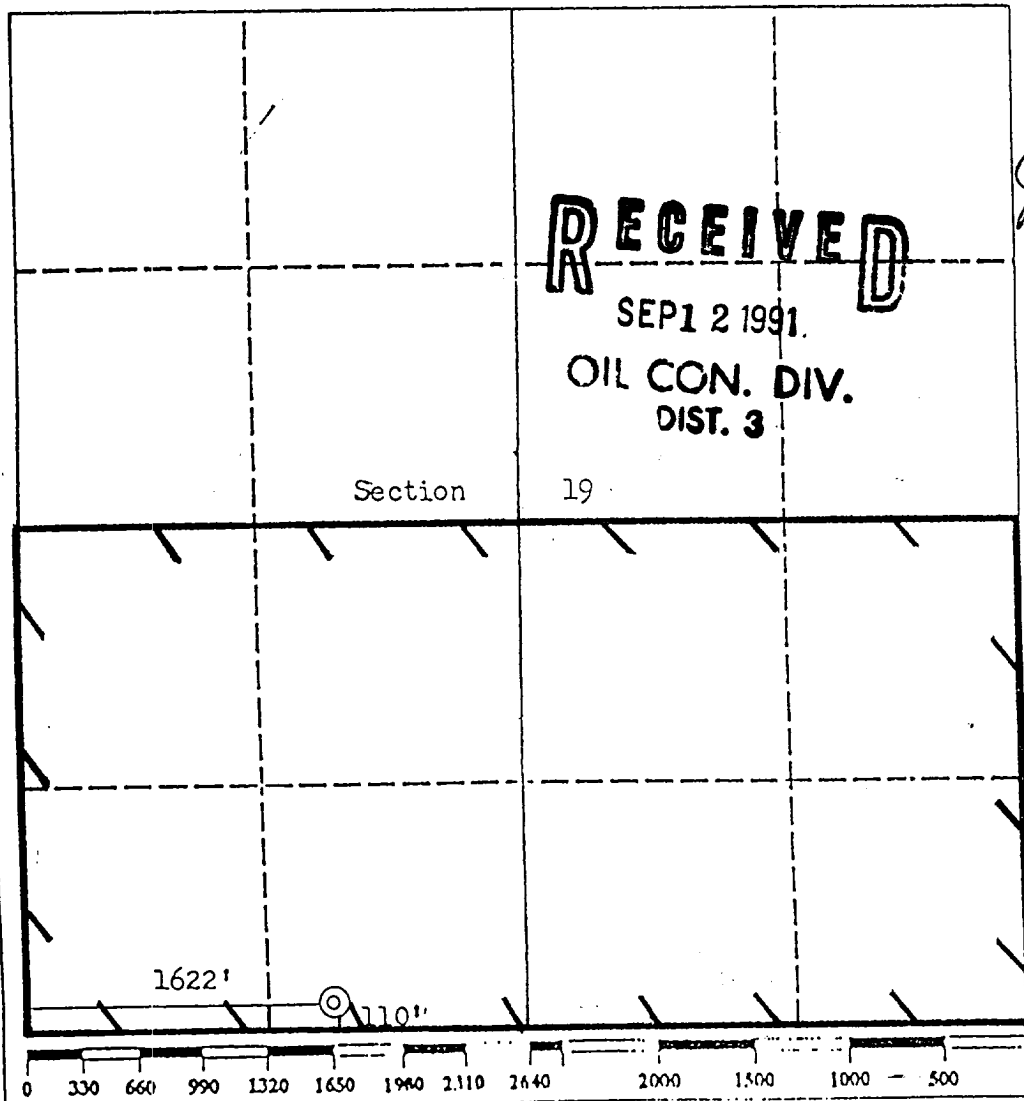
☐ Yes

☐ No

If answer is "yes" type of consolidation

If answer is "no" list the owners and tract descriptions which have actually been consolidated. (Use reverse side of this form if necessary.)

No allowable will be assigned to the well until all interests have been consolidated (by communalization, unitization, forced-pooling, or otherwise) or until a non-standard unit, eliminating such interest, has been approved by the Division.



OPERATOR CERTIFICATION

I hereby certify that the information contained herein is true and complete to the best of my knowledge and belief.

Signature

James C. Anderson

Printed Name

James C. Anderson

Position

Dist. Prod. Mgr.

Company

Mitchell Energy Corp

Date

7/10/91

SURVEYOR CERTIFICATION

I hereby certify that the well location shown on this plat was plotted from field notes of actual surveys made by me or under my supervision, and that the same is true and correct to the best of my knowledge and belief.

June 20, 1991

Date Surveyed

Frederick H. Reed

Signature & Seal of Professional Surveyor


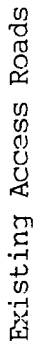
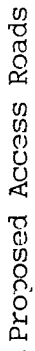

Certificate No.

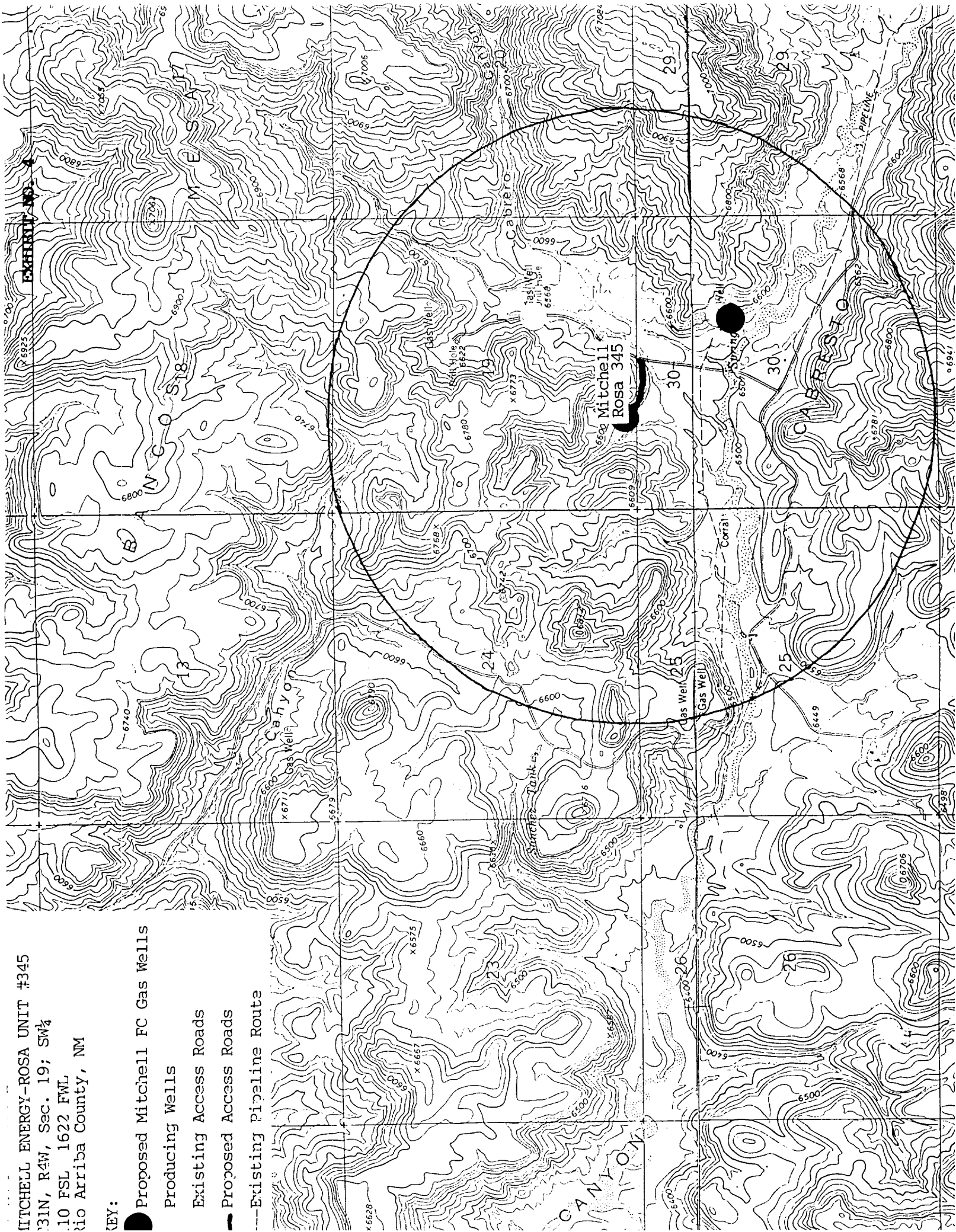
3795

Frederick H. Reed

MITCHELL ENERGY-ROSA UNIT #345
31N, R4W, Sec. 19; SW¼
10 FSL 1622 FWL
Rio Arriba County, NM

KEY:

-  Proposed Mitchell FC Gas Wells Producing Wells
-  Existing Access Roads
-  Proposed Access Roads
-  Existing Pipeline Route



- D. There are no reported restrictions or reservations noted on the oil and gas lease.
- E. Drilling is planned for August 30, 1991. It is anticipated that the case point will be reached within 14 days after commencement of drilling.

12. LESSEE'S AND OPERATOR'S REPRESENTATIVE:

ENGINEERING

Mitchell Energy Corporation
555 17th Street, Suite 3500
Denver, CO 80202
(303) 292-4455

Mr. James C. Anderson
Ms. Joanie Seay

RIGHT-OF-WAY


Trigon Engineering, Inc.
4100 E. Main
Farmington, NM 87401
(505) 325-1266

Mr. Mark Smith
Right-of-Way Supervisor

13. CERTIFICATION:

I hereby certify that I, or persons under my direct supervision, have inspected the proposed drillsite and access route; that I am familiar with the conditions which currently exist; that the statements made in this plan are, to the best of my knowledge, true and correct; and the work associated with the operations proposed herein will be performed by Mitchell Energy Corporation and its contractors and subcontractors in conformity with this plan and the terms and conditions which it is approved. This statement is subject to the provisions of 18 U.S.C. 1001 for this filing of a false statement.

Date: 7/18/91


Mr. James C. Anderson
District Production Manager