

UNITED STATES
DEPARTMENT OF THE INTERIOR
BUREAU OF LAND MANAGEMENT

30-039-25117
RECEIVED

APPLICATION FOR PERMIT TO DRILL, DEEPEN, OR PLUG-BACK

1a. TYPE OF WORK

DRILL ☒

DEEPEN ☐

PLUG-BACK ☒

b. TYPE OF WELL

OIL WELL ☐

GAS WELL ☒

OTHER

SINGLE ZONE ☒

MULTIPLE ZONE ☐

2. NAME OF OPERATOR

Phillips Petroleum Company

3. ADDRESS OF OPERATOR

5525 Hwy 64 NBU 3004, Farmington, NM 87401

4. LOCATION OF WELL (Report location clearly and in accordance with any State requirements.)*

At surface

Unit M, 1091' FSL & 1007' FWL

At proposed prod. zone Same as above

14. DISTANCE IN MILES AND DIRECTION FROM NEAREST TOWN OR POST OFFICE*

25 Miles East From Blanco

10. DISTANCE FROM PROPOSED*

LOCATION TO NEAREST
PROPERTY OR LEASE LINE, FT.
(Also to nearest drig. unit line, if any)

16. NO. OF ACRES IN LEASE

2560 Acres

17. NO. OF ACRES ASSIGNED
TO THIS WELL

5/320 Acres

18. DISTANCE FROM PROPOSED LOCATION*

TO NEAREST WELL, DRILLING, COMPLETED,
OR APPLIED FOR, ON THIS LEASE, FT.

19. PROPOSED DEPTH

8085'

20. ROTARY OR CABLE TOOLS

Rotary

21. ELEVATIONS (Show whether DF, RT, GR, etc.)

6440' (GL Unprepared)

THIS SECTION IS SUBJECT TO TECHNICAL AND
PROCEDURAL REVIEW PURSUANT TO 43 CFR 3165.3
AND APPEAL PURSUANT TO 43 CFR 3165.4

22. APPROX. DATE WORK WILL START*

Upon Approval

23.

PROPOSED CASING AND CEMENTING PROGRAM

DRILLING OPERATIONS AUTHORIZED ARE
SUBJECT TO COMPLIANCE WITH ATTACHED

SIZE OF HOLE	SIZE OF CASING	WEIGHT PER FOOT	SETTING DEPTH	QUANTITY OF CEMENT
12-1/4"	9-5/8"	36#, J-55	400'	220 Sx, Circ to Surface
8-3/4"	7"	23#, J-55	3825'	500 Sx, Circ to Surface
6-1/4"	4-1/2"	11.6#, N-80	8085'	470 Sx, First Stage
				350 Sx, Second Stage, Circ to Sur.

RECEIVED
SEP 23 1991
OIL CON. DIV.
DIST. 3

IN ABOVE SPACE DESCRIBE PROPOSED PROGRAM: If proposal is to deepen or plug back, give data on present productive zone and proposed new productive zone. If proposal is to drill or deepen directionally, give pertinent data on subsurface locations and measured and true vertical depths. Give blowout preventer program, if any.

24.

SIGNED

L. E. Robinson
L. E. Robinson

TITLE

Sr. Drlg. & Prod. Engr.

DATE

9-5-91

(This space for Federal or State office use)

PERMIT NO.

APPROVAL DATE

APPROVED BY

TITLE

CONDITIONS OF APPROVAL, IF ANY:

APPROVED
AS AMENDED

SEP 18 1991
John S. Bell
AREA MANAGER

NMCGG

*See Instructions On Reverse Side

RECEIVED
JUN 1 1962
MID. MCO HC
123

RECEIVED
JUN 1 1962

RECEIVED
JUN 1 1962

Submit to Appropriate
District Office
State Lease - 4 copies
Fee Lease - 3 copies

State of New Mexico
Energy, Minerals and Natural Resources Department

Form C-102
Revised 1-1-89

OIL CONSERVATION DIVISION

P.O. Box 2088
Santa Fe, New Mexico 87504-2088

RECEIVED
3LM

DISTRICT I
P.O. Box 1980, Hobbs, NM 88240

DISTRICT II
P.O. Drawer DD, Artesia, NM 88210

DISTRICT III
1000 Rio Brazos Rd., Aztec, NM 87410

WELL LOCATION AND ACREAGE DEDICATION PLAT
All Distances must be from the outer boundaries of the section

SEP 5 - 6 PM 3:29

CLERK OF DISTRICT COURT, N.M.

Operator PHILLIPS PETROLEUM		Lease SAN JUAN 31-6 UNIT		Well No. 31E	
Unit Letter M	Section 35	Township T.31 N.	Range R.6 W.	County RIO ARriba COUNTY	NMPM
Actual Footage Location of Well: 1091 feet from the SOUTH line and 1007 feet from the WEST line					
Ground level Elev. 6440	Producing Formation DAKOTA		Pool BASIN DAKOTA		Dedicated Acreage: 320 Acres

1. Outline the acreage dedicated to the subject well by colored pencil or hatchure marks on the plat below.

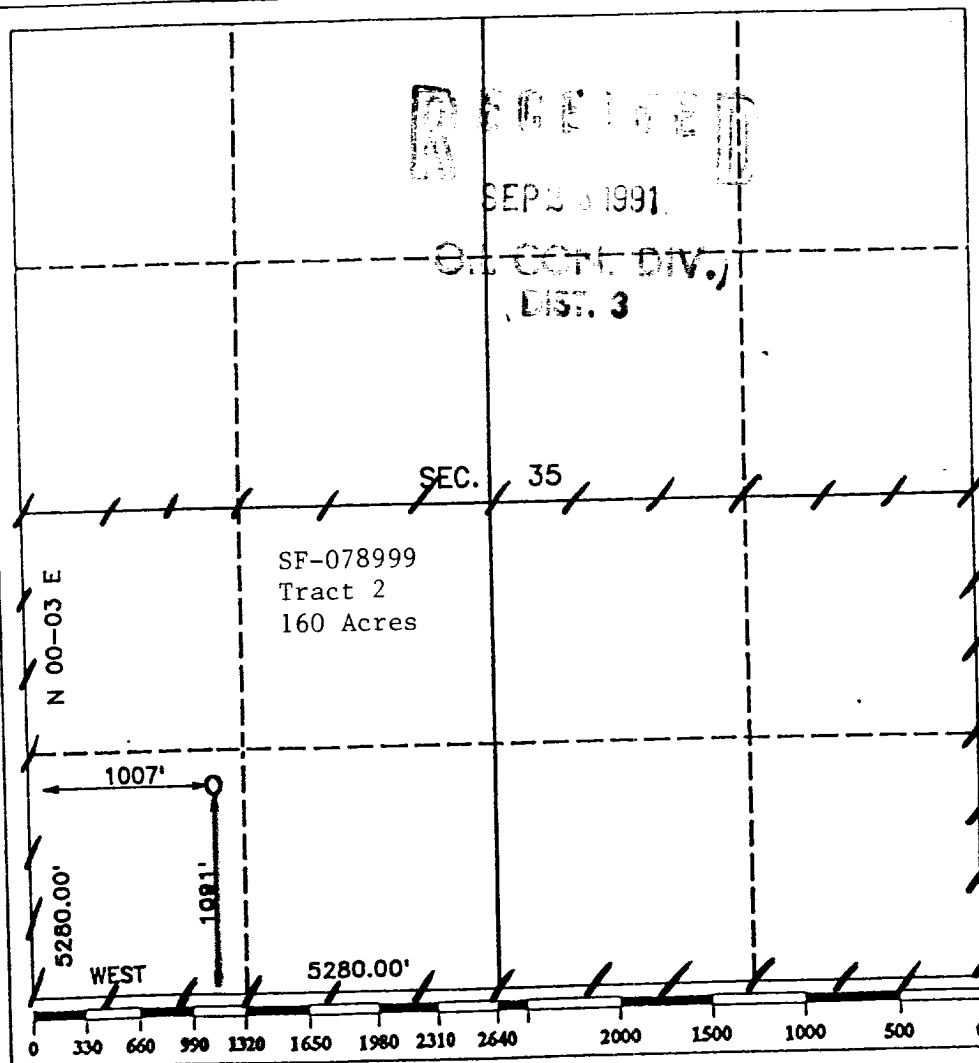
2. If more than one lease is dedicated to the well, outline each and identify the ownership thereof (both as to working interest and royalty).

3. If more than one lease of different ownership is dedicated to the well, have the interest of all owners been consolidated by communitization, unitization, force-pooling, etc.?

☒ Yes ☐ No If answer is "yes" type of consolidation **Unitization**

If answer is "no" list the owners and tract descriptions which have actually been consolidated. (Use reverse side of this form if necessary.)

No allowable will be assigned to the well until all interests have been consolidated (by communitization, unitization, forced-pooling, or otherwise) or until a non-standard unit, eliminating such interest, has been approved by the Division.



OPERATOR CERTIFICATION

I hereby certify that the information contained herein is true and complete to the best of my knowledge and belief.

Signature

L. E. Robinson

Printed Name

L. E. Robinson

Position

Sr. Drlg. & Prod. Engr.

Company

Phillips Petroleum Co.

Date

September 5, 1991

SURVEYOR CERTIFICATION

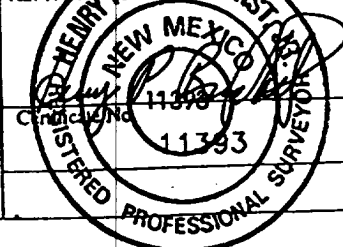
I hereby certify that the well location shown on this plat was plotted from field notes of actual surveys made by me or under my supervision, and that the same is true and correct to the best of my knowledge and belief.

Date Surveyed

JULY 23, 1991

Signature & Seal of Professional Surveyor

HENRY P. BROADBENT, JR.



SAN JUAN 31-6 UNIT DAKOTA WELLS

