

UNITED STATES  
DEPARTMENT OF THE INTERIOR  
BUREAU OF LAND MANAGEMENT

APPLICATION FOR PERMIT TO DRILL OR DEEPEN

1a. TYPE OF WORK DRILL <input checked="" type="checkbox"/> DEEPEN <input type="checkbox"/>				5. LEASE DESIGNATION AND SERIAL NO. SF-078764	
b. TYPE OF WELL OIL WELL <input type="checkbox"/> GAS WELL <input checked="" type="checkbox"/> OTHER <input type="checkbox"/> SINGLE ZONE <input type="checkbox"/> MULTIPLE ZONE <input checked="" type="checkbox"/>				6. IF INDIAN, ALLOTTEE OR TRIBE NAME	
2. NAME OF OPERATOR NORTHWEST PIPELINE CORPORATION (OGRID 16189)				7. UNIT AGREEMENT NAME Rosa Unit (008480)	
3. ADDRESS AND TELEPHONE NO. c/o Walsh Engr. & Prod. Corp. 7415 E. Main Farmington, New Mexico 87402 505 327-4892				8. FARM OR LEASE NAME, WELL NO. #137	
4. LOCATION OF WELL (Report location clearly and in accordance with any State requirements.) At surface 1321' FSL & 820' FWL At proposed prod. zone Same				9. API WELL NO. 30-039-25410	
14. DISTANCE IN MILES AND DIRECTION FROM NEAREST TOWN OR POST OFFICE* 25 miles NE of Blanco, N.M.				10. FIELD AND POOL OR WILDCAT WILDCAT: ROSA-PC 96175 BLANCO MESA VERDE 72319	
15. DISTANCE FROM PROPOSED* LOCATION TO NEAREST PROPERTY OR LEASE LINE, FT. (Also to nearest drig. unit line, if any) 820'		16. NO. OF ACRES IN LEASE 2507.30		17. NO. OF ACRES ASSIGNED TO THIS WELL 145.88 PC 5/ 232.99 MV	
18. DISTANCE FROM PROPOSED LOCATION* TO NEAREST WELL, DRILLING, COMPLETED, OR APPLIED FOR, ON THIS LEASE, FT. 160'		19. PROPOSED DEPTH 6170'		20. ROTARY OR CABLE TOOLS Rotary	
21. ELEVATIONS (Show whether DF, RT, GR, etc.) 6548' GR				22. APPROX. DATE WORK WILL START* June 1, 1994	
23. PROPOSED CASING AND CEMENTING PROGRAM				DRILLING OPERATIONS AUTHORIZED ARE SUBJECT TO COMPLIANCE WITH ATTACHED "GENERAL REQUIREMENTS"	
SIZE OF HOLE	GRADE SIZE OF CASING	WEIGHT PER FOOT	SETTING DEPTH	161 cuft Cl "B" w/2% CaCl2	
12-1/4"	9-5/8" K-55	36.0#	250'	809 cuft 65/35 Pos & 204 cuft ClB	
8-3/4"	7" K-55	20.0#	3800'	407 cuft Cl "B" w/4% Gel and additives	
6-1/4"	4-1/2" K-55	10.5#	3700-6170'		

Northwest Pipeline proposes to drill a vertical well to develop the Pictured Cliffs and Mesa Verde formations at the above described site in accordance with the attached drilling and surface use programs.

This location has been archaeologically surveyed by CRMC. Copies of the report will be submitted directly to your office.

This APD also is serving as an application to obtain BLM road right-of-way. The right-of-way will be an existing road crossing the NW/SW of Section 31, T31N, R5W and the SE/NE of Section 36, T31N, R6W where it connects to the main Rosa Road. The Rosa Road continues SW for approximately 8 miles where it connects to the N.M. State Highway 527 (Sims Mesa Road).

RECEIVED  
MAY 24 1994

OIL CON. DIV.  
DIST. 8

IN ABOVE SPACE DESCRIBE PROPOSED PROGRAM: If proposal is to deepen, give data on present productive zone and proposed new productive zone. If proposal is to drill or deepen directionally, give pertinent data on subsurface locations and measured and true vertical depths. Give blowout preventer program, if any.

24.

SIGNED Paul C. Thompson TITLE Paul C. Thompson, Agent DATE 5/9/94

(This space for Federal or State office use)

PERMIT NO. \_\_\_\_\_ APPROVAL DATE \_\_\_\_\_  
Application approval does not warrant or certify that the applicant holds legal or equitable title to those rights in the subject lease which would entitle the applicant to conduct operations thereon.  
CONDITIONS OF APPROVAL, IF ANY:

Held C-104 For N156, 115P

APPROVED BY \_\_\_\_\_ TITLE \_\_\_\_\_

APPROVED  
AS AMENDED  
MAY 20 1994  
DISTRICT MANAGER

\*See Instructions On Reverse Side

District I  
PO Box 1980, Hobbs, NM 88241-1980  
District II  
PO Drawer DD, Artesia, NM 88211-0719  
District III  
1000 Rio Brazos Rd., Aztec, NM 87410  
District IV  
PO Box 2088, Santa Fe, NM 87504-2088

State of New Mexico  
Energy, Minerals & Natural Resources Department

OIL CONSERVATION DIVISION  
PO Box 2088  
Santa Fe, NM 87504-2088

Form C-102  
Revised February 10, 1994  
Instructions on back  
Submit to Appropriate District Office  
State Lease - 4 Copies  
Fee Lease - 3 Copies

☐ AMENDED REPORT

WELL LOCATION AND ACREAGE DEDICATION PLAT

1 API Number		2 Pool Code 96175		3 Pool Name WILDCAT: ROSA-PICTURED CLIFF	
4 Property Code 008480		5 Property Name ROSA UNIT			6 Well Number # 137
7 OGRI No. 16189		8 Operator Name NORTHWEST PIPELINE CORPORATION			9 Elevation 6548

10 Surface Location

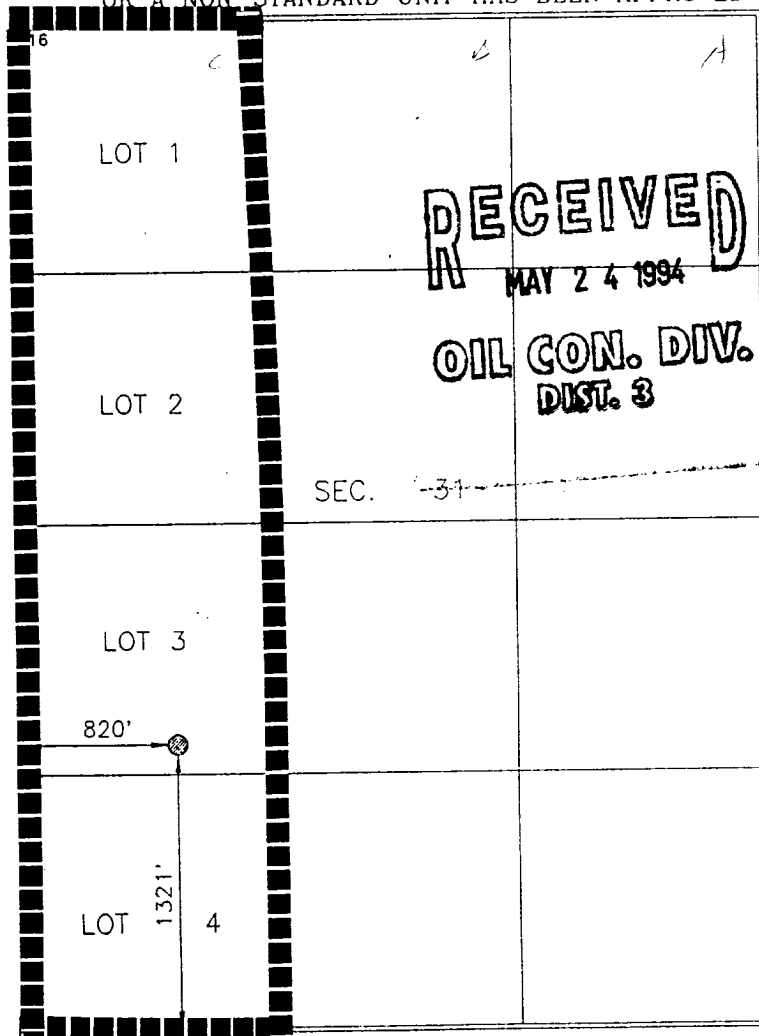
UL or lot r.o. 3L	Section 31	Township 31N	Range 5W	Lot Idn	Feet from the 1321'	North/South line FSL	Feet from the 820'	East/West line FWL	County RIO ARriba
----------------------	---------------	-----------------	-------------	---------	------------------------	-------------------------	-----------------------	-----------------------	----------------------

11 Bottom Hole Location If Different From Surface

UL or lot r.o.	Section	Township	Range	Lot Idn	Feet from the	North/South line	Feet from the	East/West line	County
----------------	---------	----------	-------	---------	---------------	------------------	---------------	----------------	--------

12 Dedicated Acres 145.88	13 Joint or Infill Y	14 Consolidation Code U	15 Order No.
------------------------------	-------------------------	----------------------------	--------------

NO ALLOWABLE WILL BE ASSIGNED TO THIS COMPLETION UNTIL ALL INTERESTS HAVE BEEN CONSOLIDATED  
OR A NON-STANDARD UNIT HAS BEEN APPROVED BY THE DIVISION



17 OPERATOR CERTIFICATION  
I hereby certify that the information contained herein is true and complete to the best of my knowledge and belief.

Signature  
Paul C. Thompson, P.E.  
Printed Name  
Agent  
Title  
5/9/94  
Date

18 SURVEYOR CERTIFICATION  
I hereby certify that the well location shown on this plat was plotted from field notes of actual surveys made by me or under my supervision, and that the same is true and correct to the best of my belief.

APRIL 5, 1994

Date of Survey  
Signature and Seal of Professional Surveyor:

James L. Jaffee

8336

Certificate Number

District I  
PO Box 1980, Hobbs, NM 88241-1980  
  
District II  
PO Drawer DD, Artesia, NM 88211-0719  
  
District III  
1000 Rio Brazos Rd., Aztec, NM 87410  
  
District IV  
PO Box 2088, Santa Fe, NM 87504-2088

State of New Mexico  
Energy, Minerals & Natural Resources Department

OIL CONSERVATION DIVISION  
PO Box 2088  
Santa Fe, NM 87504-2088

Form C-102  
Revised February 10, 1994  
Instructions on back  
Submit to Appropriate District Office  
State Lease - 4 Copies  
Fee Lease - 3 Copies

☐ AMENDED REPORT

WELL LOCATION AND ACREAGE DEDICATION PLAT

1 API Number		2 Pool Code 72319		3 Pool Name BLANCO / MESA VERDE	
4 Property Code 008480		5 Property Name ROSA UNIT			6 Well Number # 137
7 OGRID No. 16189		8 Operator Name NORTHWEST PIPELINE CORPORATION			9 Elevation 6548

10 Surface Location

UL or lot no. 36	Section 31	Township 31N	Range 5W	Lot Idn	Feet from the 1321'	North/South line FSL	Feet from the 820'	East/West line FWL	County RIO ARRIBA
---------------------	---------------	-----------------	-------------	---------	------------------------	-------------------------	-----------------------	-----------------------	----------------------

11 Bottom Hole Location If Different From Surface

UL or lot no.	Section	Township	Range	Lot Idn	Feet from the	North/South line	Feet from the	East/West line	County
---------------	---------	----------	-------	---------	---------------	------------------	---------------	----------------	--------

12 Dedicated Acres 232.99	13 Joint or Infill Y	14 Consolidation Code U	15 Order No.
------------------------------	-------------------------	----------------------------	--------------

NO ALLOWABLE WILL BE ASSIGNED TO THIS COMPLETION UNTIL ALL INTERESTS HAVE BEEN CONSOLIDATED  
OR A NON-STANDARD UNIT HAS BEEN APPROVED BY THE DIVISION

16 LOT 1	RECEIVED MAY 24 1994 OIL CON. DIV. DIST. 3
LOT 2	
SEC. 31	

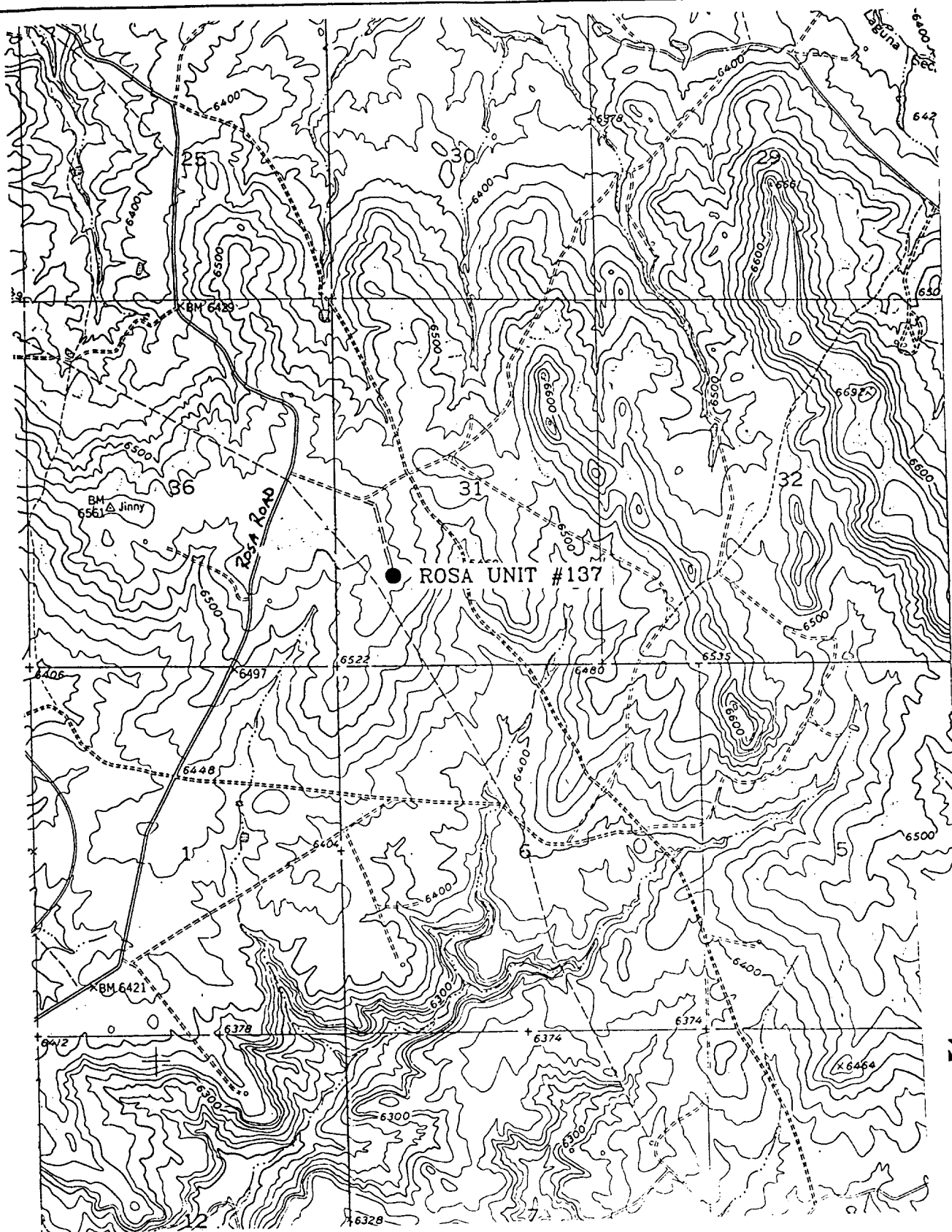
17 OPERATOR CERTIFICATION  
I hereby certify that the information contained herein is true and complete to the best of my knowledge and belief

*Paul C. Thompson*  
Signature  
Paul C. Thompson, P.E.  
Printed Name  
Agent  
Title  
5/9/94  
Date

LOT 3	820'	1321'	4
LOT 4			

18 SURVEYOR CERTIFICATION  
I hereby certify that the well location shown on this plat was plotted from field notes of actual surveys made by me or under my supervision, and that the same is true and correct to the best of my belief.

APRIL 5, 1994  
Date of Survey  
Signature and Seal of Professional Surveyor:  
*Jerry James Jeffries*  
8336  
Certificate Number



ROSA UNIT #137      NORTHWEST PIPELINE CORPORATION  
 1321' FSL, 820' FWL, SEC. 31, T.31 N., R.5 W. N.M.P.M.  
 RIO ARriba COUNTY, NEW MEXICO  
 GOMEZ RANCH  
 ELEV.= 6548