

UNITED STATES  
DEPARTMENT OF THE INTERIOR  
BUREAU OF LAND MANAGEMENT

APPLICATION FOR PERMIT TO DRILL OR DEEPEN

1a. TYPE OF WORK DRILL <input checked="" type="checkbox"/> DEEPEN <input type="checkbox"/>		1b. TYPE OF WELL OIL WELL <input type="checkbox"/> GAS WELL <input checked="" type="checkbox"/> OTHER <input type="checkbox"/>		SINGLE ZONE <input type="checkbox"/> MULTIPLE ZONE <input checked="" type="checkbox"/>	
2. NAME OF OPERATOR NORTHWEST PIPELINE CORPORATION OGRID 16189					
3. ADDRESS AND TELEPHONE NO. c/o Walsh Engr. & Prod. Corp. 7415 E. Main Farmington, N.M. 87402 505 327-4892					
4. LOCATION OF WELL (Report location clearly and in accordance with any State requirements) At surface 830' FSL & 830' FEL At proposed prod. zone Same					
14. DISTANCE IN MILES AND DIRECTION FROM NEAREST TOWN OR POST OFFICE* 25 miles NE of Blanco, N.M.					
19. DISTANCE FROM PROPOSED* LOCATION TO NEAREST PROPERTY OR LEASE LINE, FT. (Also to nearest drg. unit line, if any)		830'		16. NO. OF ACRES IN LEASE 2560	
18. DISTANCE FROM PROPOSED* LOCATION TO NEAREST WELL, DRILLING, COMPLETED, OR APPLIED FOR, ON THIS LEASE, FT.		1300'		17. NO. OF ACRES ASSIGNED TO THIS WELL 320 MV 320 DK	
21. ELEVATIONS (Show whether DF, RT, GR, or other)		6345' GR		20. ROTARY OR CABLE TOOLS Rotary	
22. APPROX. DATE WORK WILL START* June 1, 1994					
23. PROPOSED CASING AND CEMENTING PROGRAM					
SIZE OF HOLE	GRADE SIZE OF CASING	WEIGHT PER FOOT	SETTING DEPTH	*GENERAL REQUIREMENTS	
13-3/4"	10-3/4" H-40	32.75#	350'	See Attachment	
9-7/8"	7-5/8" K-55	26.40#	3660'		
6-3/4"	5-1/2" N-80	15.5#	8025'		

Northwest Pipeline Corporation proposes to drill a vertical well to develop the Mesa Verde and Dakota formations at the above described site in accordance with the attached drilling and surface use program.

This location has been archaeologically surveyed by CRMC. Copies of the report will be submitted directly to your office.

This APD also is serving as an application to obtain BLM road right-of-way. The right-of-way will be the existing main Rosa Road. The road continues SW for approximately 10 miles where it connects with the N.M. State High #527 (Sims Mesa Highway).

IN ABOVE SPACE DESCRIBE PROPOSED PROGRAM: If proposal is to deepen, give data on present productive zone and proposed new productive zone. If proposal is to drill or deepen directionally, give pertinent data on subsurface locations and measured and true vertical depths. Give blowout preventer program, if any.

SIGNED Paul C. Thompson TITLE Paul C. Thompson, Agent DATE 5/9/94  
(This space for Federal or State office use)

PERMIT NO. \_\_\_\_\_ APPROVAL DATE \_\_\_\_\_  
Application approval does not warrant or certify that the applicant holds legal or equitable title to those rights in the subject lease which would entitle the applicant to conduct operations thereon.  
CONDITIONS OF APPROVAL, IF ANY:

APPROVED BY \_\_\_\_\_ TITLE \_\_\_\_\_

\*See Instructions On Reverse Side

Title 18 U.S.C. Section 1001, makes it a crime for any person knowingly and willfully to make to any department or agency of the United States any false, fictitious or fraudulent statements or representations as to any matter within its jurisdiction.

NMOCD

5. LEASE DESIGNATION AND SERIAL NO. SF-078771
6. IF INDIAN, ALLOTTEE OR TRIBE NAME
7. UNIT AGREEMENT NAME Rosa Unit 008480
8. FARM OR LEASE NAME, WELL NO. #1E
9. JAN WELL NO. 30-039-25411
10. FIELD AND POOL OR WILDCAT Blanco Mesa Verde 72319
11. SEC., T., R., M., OR BLK. AND SURVEY OR AREA Basin Dakota 71599
12. COUNTY OR PARISH Rio Arriba
13. STATE N.M.

14. DISTANCE IN MILES AND DIRECTION FROM NEAREST TOWN OR POST OFFICE* 25 miles NE of Blanco, N.M.
15. DISTANCE FROM PROPOSED* LOCATION TO NEAREST PROPERTY OR LEASE LINE, FT. (Also to nearest drg. unit line, if any)
16. NO. OF ACRES IN LEASE 2560
17. NO. OF ACRES ASSIGNED TO THIS WELL 320 MV 320 DK
18. DISTANCE FROM PROPOSED* LOCATION TO NEAREST WELL, DRILLING, COMPLETED, OR APPLIED FOR, ON THIS LEASE, FT.
19. PROPOSED DEPTH 8025'
20. ROTARY OR CABLE TOOLS Rotary
21. ELEVATIONS (Show whether DF, RT, GR, or other)
22. APPROX. DATE WORK WILL START* June 1, 1994

DRILLING OPERATIONS AUTHORIZED ARE  
SUBJECT TO COMPLIANCE WITH ATTACHED  
\*GENERAL REQUIREMENTS

District I  
PO Box 1980, Hobbs, NM 88241-1980  
District II  
PO Drawer DD, Artesia, NM 88211-0719  
District III  
1000 Rio Brazos Rd., Aztec, NM 87410  
District IV  
PO Box 2088, Santa Fe, NM 87504-2088

State of New Mexico  
Energy, Minerals & Natural Resources Department

OIL CONSERVATION DIVISION

PO Box 2088  
Santa Fe, NM 87504-2088

RECEIVED  
OIL CON. DIV.

Form C-102  
Revised February 10, 1994  
Instructions on back  
Submit to Appropriate District Office  
State Lease - 4 Copies  
Fee Lease - 3 Copies

AMENDED REPORT

WELL LOCATION AND ACREAGE DEDICATION PLAT

1 API Number		2 Pool Code 71599		3 Pool Name BASIN DAKOTA	
4 Property Code 008480		5 Property Name ROSA UNIT			6 Well Number # 001E
7 OGRID No. 16189		8 Operator Name NORTHWEST PIPELINE CORPORATION			9 Elevation 6345

10 Surface Location

UL or lot no. P	Section 11	Township 31N	Range 6W	Lot Idn	Feet from the 830'	North/South line FSL	Feet from the 830'	East/West line FEL	County RIO ARRIBA
--------------------	---------------	-----------------	-------------	---------	-----------------------	-------------------------	-----------------------	-----------------------	----------------------

11 Bottom Hole Location If Different From Surface

UL or lot no.	Section	Township	Range	Lot Idn	Feet from the	North/South line	Feet from the	East/West line	County
---------------	---------	----------	-------	---------	---------------	------------------	---------------	----------------	--------

12 Dedicated Acres 320	13 Joint or Infill Y	14 Consolidation Code U	15 Order No.
---------------------------	-------------------------	----------------------------	--------------

NO ALLOWABLE WILL BE ASSIGNED TO THIS COMPLETION UNTIL ALL INTERESTS HAVE BEEN CONSOLIDATED  
OR A NON-STANDARD UNIT HAS BEEN APPROVED BY THE DIVISION

16		17 OPERATOR CERTIFICATION I hereby certify that the information contained herein is true and complete to the best of my knowledge and belief	
<b>RECEIVED</b> MAY 23 1994 <b>OIL CON. DIV.</b> <b>DIST. 3</b>		<i>Paul C. Thompson</i> Signature Paul C. Thompson, P.E. Printed Name Agent Title 5/9/94 Date	
SEC. 11		18 SURVEYOR CERTIFICATION I hereby certify that the well location shown on this plat was plotted from field notes of actual surveys made by me or under my supervision, and that the same is true and correct to the best of my belief. MARCH 29, 1994 Date of Survey Signature and Seal of Professional Surveyor: <i>Jerry Thomas Griffin</i> 8336 Certificate Number	
		830' 830'	

District I  
PO Box 1980, Hobbs, NM 88241-1980  
District II  
PO Drawer DD, Artesia, NM 88211-0719  
District III  
1000 Rio Brazos Rd., Aztec, NM 87410  
District IV  
PO Box 2088, Santa Fe, NM 87504-2088

State of New Mexico  
Energy, Minerals & Natural Resources Department

OIL CONSERVATION DIVISION

PO Box 2088  
Santa Fe, NM 87504-2088

RECEIVED

BLM

MAY 12 11:07

Form C-10.  
Revised February 10, 199  
Instructions on bac:  
Submit to Appropriate District Office:  
State Lease - 4 Copie  
Fee Lease - 3 Copie

AMENDED REPORT

WELL LOCATION AND ACREAGE DEDICATION PLAT

1 API Number		2 Pool Code 72319		3 Pool Name BLANCO / MESA VERDE		
4 Property Code 008480		5 Property Name ROSA UNIT			6 Well Number # 001E	
7 OGRID No. 16189		8 Operator Name NORTHWEST PIPELINE CORPORATION			9 Elevation 6345	

10 Surface Location

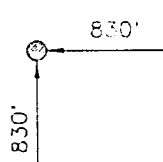
UL or lot no. P	Section 11	Township 31N	Range 6W	Lot Idn	Feet from the 830'	North/South line FSL	Feet from the 830'	East/West line FEL	County RIO ARRIBA
--------------------	---------------	-----------------	-------------	---------	-----------------------	-------------------------	-----------------------	-----------------------	----------------------

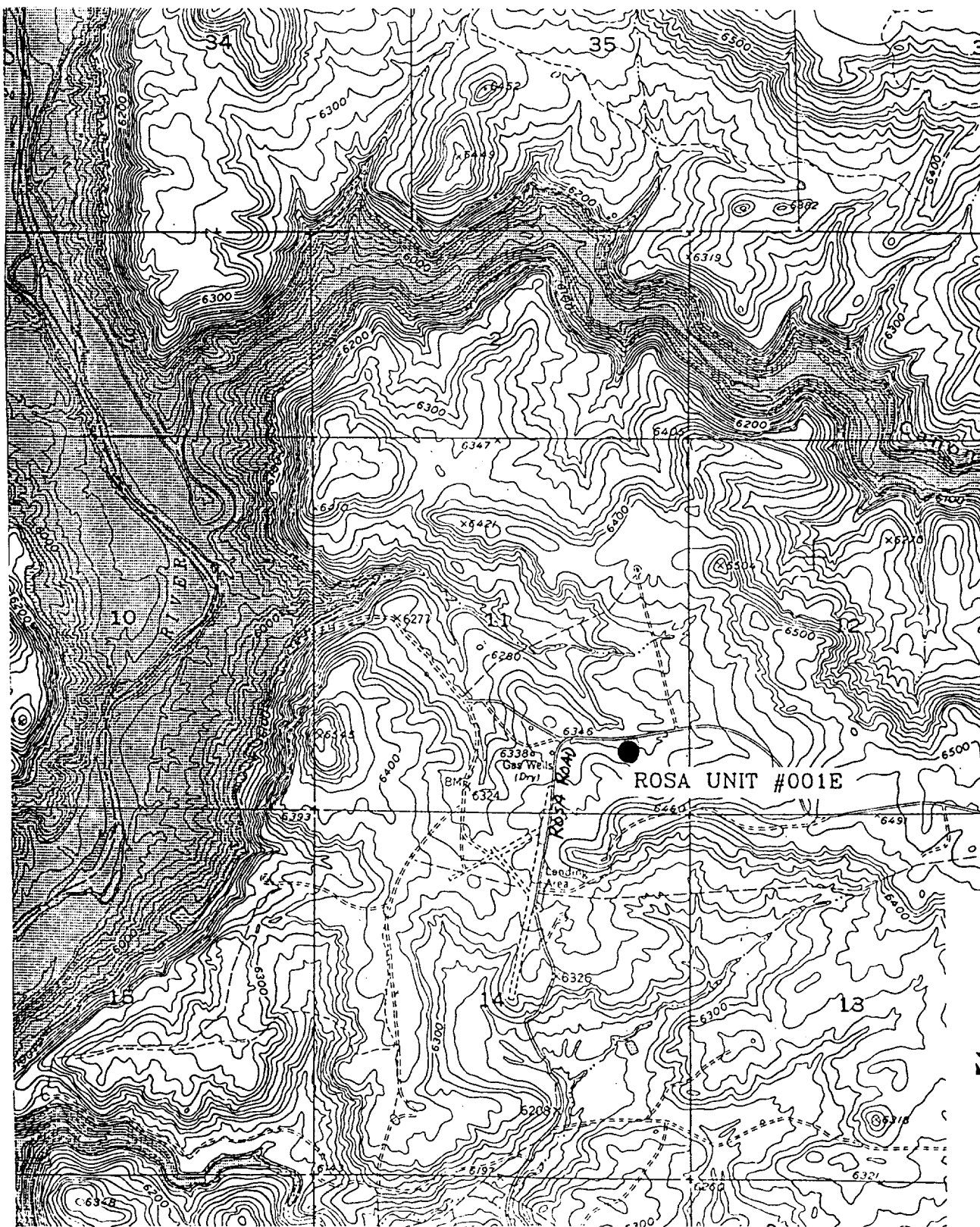
11 Bottom Hole Location If Different From Surface

UL or lot no.	Section	Township	Range	Lot Idn	Feet from the	North/South line	Feet from the	East/West line	County
---------------	---------	----------	-------	---------	---------------	------------------	---------------	----------------	--------

12 Dedicated Acres 320	13 Joint or Infill Y	14 Consolidation Code U	15 Order No.
---------------------------	-------------------------	----------------------------	--------------

NO ALLOWABLE WILL BE ASSIGNED TO THIS COMPLETION UNTIL ALL INTERESTS HAVE BEEN CONSOLIDATED  
OR A NON-STANDARD UNIT HAS BEEN APPROVED BY THE DIVISION

16		17 OPERATOR CERTIFICATION I hereby certify that the information contained herein is true and complete to the best of my knowledge and belief	
<b>RECEIVED</b> MAY 23 1994 <b>OIL CON. DIV.</b> DIST. 3		Signature <i>Paul C. Thompson</i> Paul C. Thompson, P.E. Printed Name Agent Title 5/9/94 Date	
SEC. 11		18 SURVEYOR CERTIFICATION I hereby certify that the well location shown on this plat was plotted from field notes of actual surveys made by me or under my supervision, and that the same is true and correct to the best of my belief. MARCH 29, 1994 Date of Survey Signature and Seal of Professional Surveyor: <i>Jerry L. Jaffins</i> 8336 Certificate Number	
			



ROSA UNIT #001E      NORTHWEST PIPELINE CORPORATION  
 830' FSL, 830' FEL, SEC. 11, T.31 N., R.6 W. N.M.P.M.  
 RIO ARriba COUNTY, NEW MEXICO  
 BANCOS MESA NW  
 ELEV.= 6345

PREPARED BY: JEFFRIES & ASSOCIATES, TULSA OK.