

UNITED STATES
DEPARTMENT OF THE INTERIOR
BUREAU OF LAND MANAGEMENT

APPLICATION FOR PERMIT TO DRILL OR DEEPEN

1a. TYPE OF WORK
DRILL ☒ DEEPEN ☐
b. TYPE OF WELL
OIL WELL ☐ GAS WELL ☒ OTHER ☐
SINGLE ZONE ☐ MULTIPLE ZONE ☒

2. NAME OF OPERATOR
NORTHWEST PIPELINE CORPORATION OGRID 16189

3. ADDRESS AND TELEPHONE NO. c/o Walsh Engr. & Prod. Corp.
7415 E. Main Farmington, N.M. 87401

4. LOCATION OF WELL (Report location clearly and in accordance with any
At surface 963'FNL & 1184'FWL
At proposed prod. zone Same

14. DISTANCE IN MILES AND DIRECTION FROM NEAREST TOWN OR POST OFFICE
25 miles Northeast of Blanco, N.M.

15. DISTANCE FROM PROPOSED LOCATION TO NEAREST PROPERTY OR LEASE LINE, FT.
(Also to nearest drig. unit line, if any) 963'

18. DISTANCE FROM PROPOSED LOCATION TO NEAREST WELL, DRILLING, COMPLETED, OR APPLIED FOR, ON THIS LEASE, FT. 2500'

21. ELEVATIONS (Show whether DF, RT, GR) 6274'GR
action is subject to technical and procedural review pursuant to 43 CFR 3165.3 and appeal pursuant to 43 CFR 3165.4

23. PROPOSED CASING AND CEMENTING PROGRAM

SIZE OF HOLE	GRADE SIZE OF CASING	WEIGHT PER FOOT	SETTING DEPTH
12-1/4"	9-5/8", K-55	36.0#	250'
8-3/4"	7", K-55	20.0#	3600'
6-1/4"	4-1/2", K-55	10.5#	3450-5900

DRILLING OPERATIONS AUTHORIZED ARE
SUBJECT TO COMPLIANCE WITH ATTACHED
"GENERAL REQUIREMENTS"
161 cuft Cl "B" w/2% CaCl2
830 cuft 65/35 poz & 118 cuft ClB
407 cuft Cl "B" w/4% Gel & additives

Northwest Pipeline proposes to drill a vertical well to develop the Pictured Cliffs and Mesa Verde formations at the above described site in accordance with the attached drilling and surface use program.

This location has been archaeologically surveyed by CRMC. Copies of the report will be submitted directly to your office.

This APD also is serving as an application to obtain BLM road right-of-way. The right-of-way will be an existing road crossing the W/2 of Section 26, the NE/NW and N/2 NE of Section 35, and the N/2 of the NW/4 of Section 36 where it connects with the main Rosa Road. The Rosa Road continues in a southwest direction for 8 miles where it connects to the Sims Mesa Highway.

IN ABOVE SPACE DESCRIBE PROPOSED PROGRAM: If proposal is to deepen, give data on present productive zone and proposed new productive zone. If proposal is to drill or deepen directionally, give pertinent data on subsurface locations and measured and true vertical depths. Give blowout prevention program, if any.

24. SIGNED Paul C. Thompson TITLE Paul C. Thompson - Agent DATE 5/9/94
(This space for Federal or State office use)

PERMIT NO. _____ APPROVAL DATE: _____
Application approval does not warrant or certify that the applicant holds legal or equitable title to those rights in the subject lease which would entitle the applicant to conduct operations thereon.
CONDITIONS OF APPROVAL, IF ANY:

APPROVED BY [Signature] TITLE _____ DATE JUN 17 1994
DISTRICT MANAGER

*See Instructions On Reverse Side

District I
PO Box 1980, Hobbs, NM 88241-1980
District II
PO Drawer DD, Artesia, NM 88211-0719
District III
1000 Rio Bravo Rd., Aztec, NM 87410
District IV
PO Box 2088, Santa Fe, NM 87504-2088

State of New Mexico
Energy, Minerals & Natural Resources Department

OIL CONSERVATION DIVISION
PO Box 2088
Santa Fe, NM 87504-2088

Form C-
Revised February 10, 1
Instructions on b
Submit to Appropriate District Of
State Lease - 4 Coj
Fee Lease - 3 Coj

☐ AMENDED REPO

WELL LOCATION AND ACREAGE DEDICATION PLAT

¹ API Number 30-039-25430	² Pool Code 72319	³ Pool Name BLANCO / MESA VERDE
⁴ Property Code 008480	⁵ Property Name ROSA UNIT	⁶ Well Number # 08A
⁷ OGRID No. 16189	⁸ Operator Name NORTHWEST PIPELINE CORPORATION	⁹ Elevation 6274

¹⁰ Surface Location

UL or lot no. D	Section 26	Township 31N	Range 6W	Lot Idn	Feet from the 963'	North/South line FNL	Feet from the 1184'	East/West line FWL	County RIO ARRIB.
--------------------	---------------	-----------------	-------------	---------	-----------------------	-------------------------	------------------------	-----------------------	----------------------

¹¹ Bottom Hole Location If Different From Surface

UL or lot no.	Section	Township	Range	Lot Idn	Feet from the	North/South line	Feet from the	East/West line	County
---------------	---------	----------	-------	---------	---------------	------------------	---------------	----------------	--------

¹² Dedicated Acres 320	¹³ Joint or Infill Y	¹⁴ Consolidation Code U	¹⁵ Order No.
--------------------------------------	------------------------------------	---------------------------------------	-------------------------

NO ALLOWABLE WILL BE ASSIGNED TO THIS COMPLETION UNTIL ALL INTERESTS HAVE BEEN CONSOLIDATED
OR A NON-STANDARD UNIT HAS BEEN APPROVED BY THE DIVISION

16	963'	1184'
SEC. 26		

RECEIVED
JUN 21 1994
OIL CON. DIV.
DIST. 3

¹⁷ OPERATOR CERTIFICATION

I hereby certify that the information contained herein is true and complete to the best of my knowledge and belief.

Paul C. Thompson
Signature
Paul C. Thompson, P.E.
Printed Name
Agent
TUE
4/18/94
Date

¹⁸ SURVEYOR CERTIFICATION

I hereby certify that the well location shown on this plat was plotted from field notes of actual surveys made by me or under my supervision, and that the same is true and correct to the best of my belief.

APRIL 7, 1994

Date of Survey

Signature and Seal of Professional Surveyor:

James H. Peterson
6787
Certificate Number

District I
PO Box 1980, Hobbs, NM 88241-1980
District II
PO Drawer DD, Artesia, NM 88211-0719
District III
1000 Rio Bravos Rd., Aztec, NM 87410
District IV
PO Box 2088, Santa Fe, NM 87504-2088

State of New Mexico
Energy, Minerals & Natural Resources Department

OIL CONSERVATION DIVISION
PO Box 2088
Santa Fe, NM 87504-2088

Form C-
Revised February 10, 1994
Instructions on back
Submit to Appropriate District Office
State Lease - 4 Copies
Fee Lease - 3 Copies

☐ AMENDED REPO

WELL LOCATION AND ACREAGE DEDICATION PLAT

1 API Number		2 Pool Code 96175		3 Pool Name WILDCAT: ROSA -PICTURED CLIFF	
4 Property Code 008480		5 Property Name ROSA UNIT			6 Well Number # 08A
7 OGRID No. 16189		8 Operator Name NORTHWEST PIPELINE CORPORATION			9 Elevation 6274

10 Surface Location

UL or lot no. D	Section 26	Township 31N	Range 6W	Lot Idn	Feet from the 963'	North/South line FNL	Feet from the 1184'	East/West line FWL	County RIO ARRIBAS
--------------------	---------------	-----------------	-------------	---------	-----------------------	-------------------------	------------------------	-----------------------	-----------------------

11 Bottom Hole Location If Different From Surface

UL or lot no.	Section	Township	Range	Lot Idn	Feet from the	North/South line	Feet from the	East/West line	County
---------------	---------	----------	-------	---------	---------------	------------------	---------------	----------------	--------

12 Dedicated Acres 160	13 Joint or Infill Y	14 Consolidation Code U	15 Order No.
---------------------------	-------------------------	----------------------------	--------------

NO ALLOWABLE WILL BE ASSIGNED TO THIS COMPLETION UNTIL ALL INTERESTS HAVE BEEN CONSOLIDATED
OR A NON-STANDARD UNIT HAS BEEN APPROVED BY THE DIVISION

16		963'	
1184'		SEC. 26	

RECEIVED
JUN 21 1994

OIL CON. DIV.
DIST. 3

17 OPERATOR CERTIFICATION
I hereby certify that the information contained herein is true and complete to the best of my knowledge and belief

Paul C. Thompson
Signature
Paul C. Thompson, P.E.
Printed Name
Agent
Title
4/18/94
Date

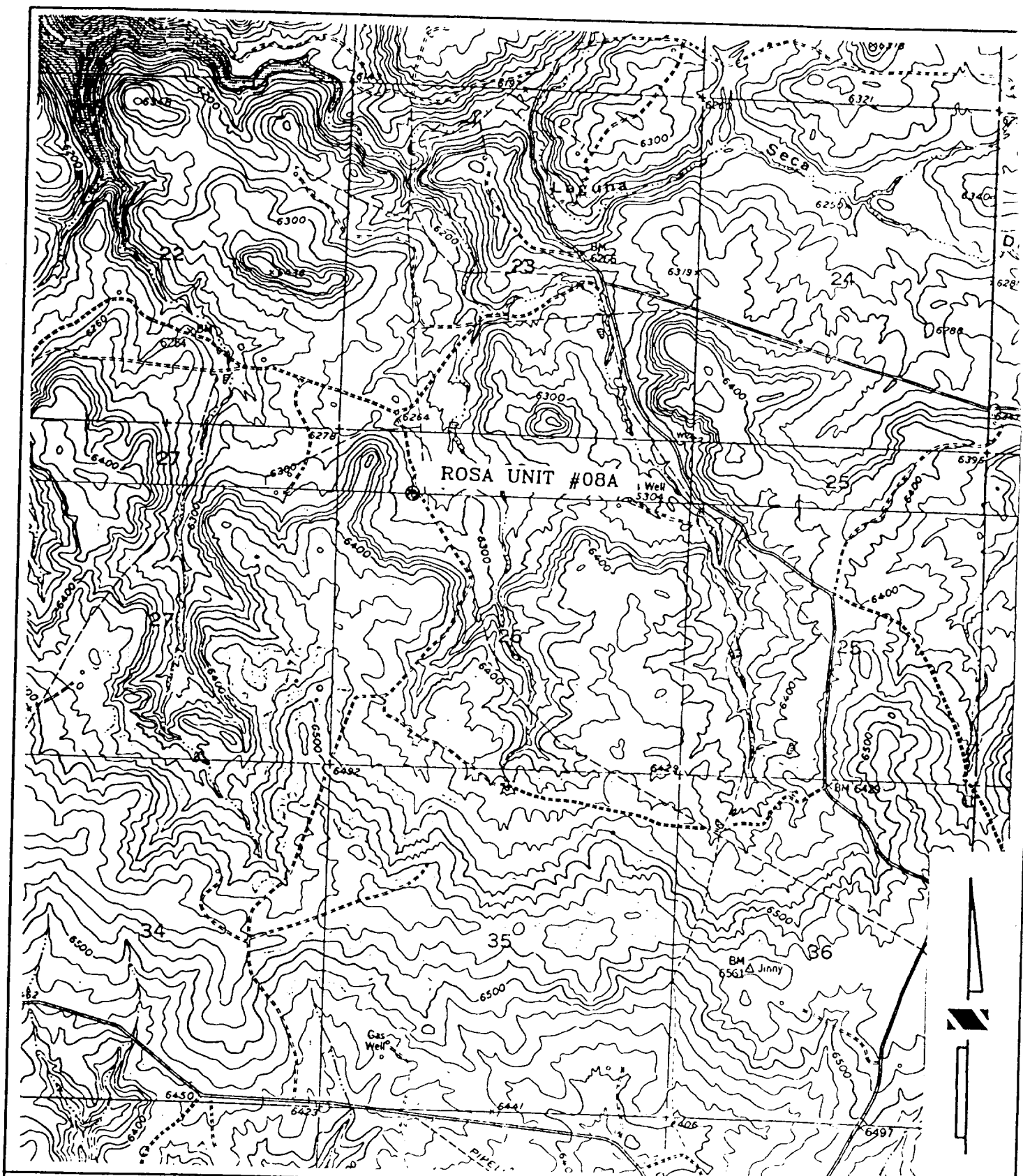
18 SURVEYOR CERTIFICATION

I hereby certify that the well location shown on this plat was plotted from field notes of actual surveys made by me or under my supervision, and that the same is true and correct to the best of my belief

APRIL 7, 1994

Date of Survey
Signature and Seal of Professional Surveyor:

Samuel R. Feltus
6707
6707
Certificate Number



ROSA UNIT #08A NORTHWEST PIPELINE CORPORATION
 963' FNL, 1184' FWL, SEC. 26, T.31 N., R.6 W. N.M.P.M.
 RIO ARriba COUNTY, NEW MEXICO
 BANCOS MESA NW
 ELEV. = 6274