

UNITED STATES  
DEPARTMENT OF THE INTERIOR  
BUREAU OF LAND MANAGEMENT

APPLICATION FOR PERMIT TO DRILL OR DEEPEN

1A. TYPE OF WORK

DRILL ☒

DEEPEN ☐

b. TYPE OF WELL

OIL  
WELL ☐

GAS  
WELL ☒

OTHER

SINGLE  
ZONE ☐

MULTIPLE  
ZONE ☒

2. NAME OF OPERATOR

NORTHWEST PIPELINE CORPORATION

OGRID 16189

3. ADDRESS AND TELEPHONE NO.

c/o Walsh Engr. & Prod. Corp.  
7415 E. Main Farmington, N.M. 87402 505 327-4892

4. LOCATION OF WELL (Report location clearly and in accordance with any State requirements.)\*

At surface 1095' FNL & 1655' FWL

At proposed prod. zone Same

14. DISTANCE IN MILES AND DIRECTION FROM NEAREST TOWN OR POST OFFICE\*

25 miles Northeast of Blanco, New Mexico

10. DISTANCE FROM PROPOSED\*

LOCATION TO NEAREST  
PROPERTY OR LEASE LINE, FT.  
(Also to nearest drig. unit line, if any)

1095'

16. NO. OF ACRES IN LEASE

2560

18. DISTANCE FROM PROPOSED LOCATION\*

TO NEAREST WELL, DRILLING, COMPLETED,  
OR APPLIED FOR, ON THIS LEASE, FT.

1500'

19. PROPOSED DEPTH

8140'

21. ELEVATIONS (Show whether DF, RT, GR, etc.)

6375'

23.

PROPOSED CASING AND CEMENTING PROGRAM

DRILLING OPERATIONS AUTHORIZED ARE  
SUBJECT TO A LEASE WITH ATTACHED

SIZE OF HOLE	GRADE, SIZE OF CASING	WEIGHT PER FOOT	SETTING DEPTH	"GENERAL" QUANTITY OF CEMENT
13-3/4"	10-3/4", H-40	32.75	500'	405 cuft Cl "B" w/3% CaCl2
9-7/8"	7-5/8", K-55	26.4	3645'	1261 cuft 65/35 Poz, 271 cuft ClB
6-3/4"	5-1/2", N-80	17.00	8140'	350 cuft 50/50 Poz & 144 cuft with additives

This action is subject to technical and  
procedural review pursuant to 43 CFR 3165.3  
and appeal pursuant to 43 CFR 3165.4.

NORTHWEST PIPELINE proposes to drill a vertical well to develop the Mesa Verde  
and Dakota formations at the above described site in accordance with the attached  
drilling and surface use programs.

This location has been archaeologically surveyed by CRMC. Copies of the report will  
be submitted directly to your office.

This APD also is serving as an application to obtain BLM road right-of-way. The  
right-of-way will be an existing road crossing the NW/4 of Section 14, T31N, R6W  
where it connects to the main Rosa Road. The Rosa Road continues in a southwest  
direction for 14 miles where it connects to the Sims Mesa Highway.

IN ABOVE SPACE DESCRIBE PROPOSED PROGRAM: If proposal is to deepen, give data on present productive zone and proposed new productive zone. If proposal is to drill or  
deepen directionally, give pertinent data on subsurface locations and measured and true vertical depths. Give blowout preventer program, if any.

24.

SIGNED

*Paul C. Thompson*

TITLE Paul C. Thompson, Agent

DATE 3/6/95

(This space for signature of authorized official)

PERMIT NO.

MAR 23 1995

APPROVAL DATE

Application approval does not warrant or certify that the applicant holds legal or equitable title to those rights in the subject lease which would entitle the applicant to conduct operations thereon.

CONDITIONS OF APPROVAL IF ANY:

OIL CON. DIV.  
DIST. 3

NMOCD  
TITLE

APPROVED BY

*[Signature]*

\*See Instructions On Reverse Side

APPROVED  
AS AMENDED

MAR 20 1995

DISTRICT MANAGER

District I  
PO Box 1980, Hobbs, NM 88241-1980  
District II  
PO Drawer DD, Artesia, NM 88211-0719  
District III  
1000 Rio Brazos Rd., Aztec, NM 87410  
District IV  
PO Box 2088, Santa Fe, NM 87504-2088

State of New Mexico  
Energy, Minerals & Natural Resources Department

OIL CONSERVATION DIVISION  
PO Box 2088  
Santa Fe, NM 87504-2088

Form C-102  
Revised February 21, 1994  
Instructions on back  
Submit to Appropriate District Office  
State Lease - 4 Copies  
Fee Lease - 3 Copies

☐ AMENDED REPORT

WELL LOCATION AND ACREAGE DEDICATION PLAT

1 API Number <b>30-039-25496</b>		1 Pool Code 72319		1 Pool Name Blanco Mesa Verde	
1 Property Code 008480		1 Property Name Rosa Unit			1 Well Number 016 A
1 OGRID No. 16189		1 Operator Name Northwest Pipeline Production			1 Elevation 6375'

10 Surface Location

UL or lot no.	Section	Township	Range	Lot Idn	Feet from the	North/South line	Feet from the	East/West line	County
C	14	31 N	6 W		1095	North	1655	West	Rio Arriba

11 Bottom Hole Location If Different From Surface

UL or lot no.	Section	Township	Range	Lot Idn	Feet from the	North/South line	Feet from the	East/West line	County

12 Dedicated Acres 320	13 Joint or Infill	14 Consolidation Code	15 Order No.
---------------------------	--------------------	-----------------------	--------------

NO ALLOWABLE WILL BE ASSIGNED TO THIS COMPLETION UNTIL ALL INTERESTS HAVE BEEN CONSOLIDATED  
OR A NON-STANDARD UNIT HAS BEEN APPROVED BY THE DIVISION

	<p>17 OPERATOR CERTIFICATION</p> <p>I hereby certify that the information contained herein is true and complete to the best of my knowledge and belief</p> <p><i>Paul C. Thompson</i> Signature Paul C. Thompson, P.E. (Agent) Printed Name President Walsh Engr. &amp; Prod. Corp. Title 3/6/95 Date</p>
	<p>18 SURVEYOR CERTIFICATION</p> <p>I hereby certify that the well location shown on this plat was plotted from field notes of actual surveys made by me or under my supervision, and that the same is true and correct to the best of my belief.</p> <p>2-14-95 Date of Survey <i>Paul C. Thompson</i> Signature and Title of Professional Surveyor 6857 Certificate Number</p>

District I  
PO Box 1980, Hobbs, NM 88241-1980  
District II  
PO Drawer DD, Artesia, NM 88211-0719  
District III  
1000 Rio Brazos Rd., Aztec, NM 87410  
District IV  
PO Box 2088, Santa Fe, NM 87504-2088

State of New Mexico  
Energy, Minerals & Natural Resources Department

OIL CONSERVATION DIVISION  
PO Box 2088  
Santa Fe, NM 87504-2088

Form C-102  
Revised February 21, 1994  
Instructions on back  
Submit to Appropriate District Office  
State Lease - 4 Copies  
Fee Lease - 3 Copies

☐ AMENDED REPORT

WELL LOCATION AND ACREAGE DEDICATION PLAT

<sup>1</sup> API Number	<sup>2</sup> Pool Code 71599	<sup>3</sup> Pool Name BASIN DAKOTA
<sup>4</sup> Property Code 008480	<sup>5</sup> Property Name Rosa Unit	<sup>6</sup> Well Number 016 A
<sup>7</sup> OGRID No. 16189	<sup>8</sup> Operator Name Northwest Pipeline Production	<sup>9</sup> Elevation 6375'

<sup>10</sup> Surface Location

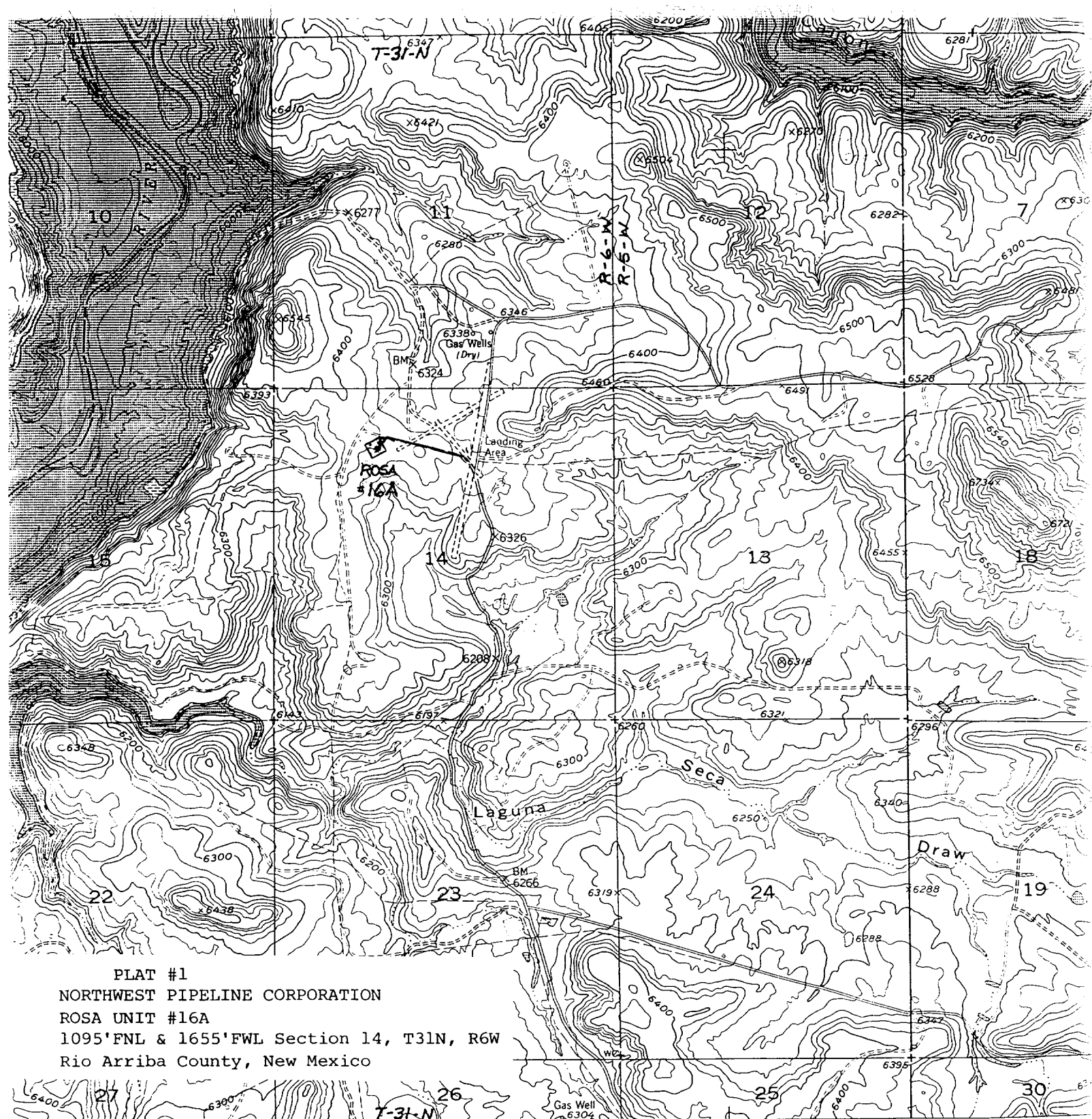
UL or lot no.	Section	Township	Range	Lot Idn	Feet from the	North/South line	Feet from the	East/West line	County
C	14	31 N	6 W		1095	North	1655	West	Rio Arriba

<sup>11</sup> Bottom Hole Location If Different From Surface

UL or lot no.	Section	Township	Range	Lot Idn	Feet from the	North/South line	Feet from the	East/West line	County
<sup>12</sup> Dedicated Acres 320	<sup>13</sup> Joint or Infill	<sup>14</sup> Consolidation Code	<sup>15</sup> Order No.						

NO ALLOWABLE WILL BE ASSIGNED TO THIS COMPLETION UNTIL ALL INTERESTS HAVE BEEN CONSOLIDATED  
OR A NON-STANDARD UNIT HAS BEEN APPROVED BY THE DIVISION

<div><div>16</div><div>5280.00'</div><div>1655'</div><div>1095'</div><div>5280.00'</div><div>5280.00'</div></div>	<div><div>17 OPERATOR CERTIFICATION</div><div>I hereby certify that the information contained herein is true and complete to the best of my knowledge and belief</div><div><div>Paul C. Thompson</div><div>Signature</div><div>Paul C. Thompson, P.E. (Agent)</div><div>Printed Name</div><div>President</div><div>Walsh Engr. &amp; Prod. Corp.</div><div>Title</div><div>3/6/95</div><div>Date</div></div><div><div>18 SURVEYOR CERTIFICATION</div><div>I hereby certify that the well location shown on this plat was plotted from field notes of actual surveys made by me or under my supervision, and that the same is true and correct to the best of my belief.</div><div><div>2-14-95</div><div>Date of Survey</div><div><div>NEW F. C. EDWARDS</div><div>REGISTERED LAND SURVEYOR</div><div>6857</div></div><div>Signature and Seal of Professional Surveyor</div><div>Certificate Number</div></div></div></div>
---	---

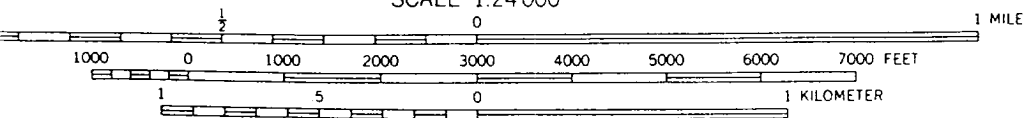


PLAT #1  
 NORTHWEST PIPELINE CORPORATION  
 ROSA UNIT #16A  
 1095' FNL & 1655' FWL Section 14, T31N, R6W  
 Rio Arriba County, New Mexico

(GOMEZ RANCH)  
 4557 IV SW  
 SCALE 1:24000

20 MI. TO U.S. 64

25' 1285 R 6 W R 5 W INTERIOR—GEOLOGICAL



CONTOUR INTERVAL 20 FEET  
 NATIONAL GEODETIC VERTICAL DATUM OF 1929

BANCOS MESA NW, NEW MEX.  
 7.5 MIN. USGS TOPOGRAPHIC  
 QUAD.



QUADRANGLE LOCATION

THIS MAP COMPLIES WITH NATIONAL MAP ACCURACY STANDARDS  
 SALE BY U. S. GEOLOGICAL SURVEY, DENVER, COLORADO 80225 OR RESTON, VIRGINIA 22092

Revisions shown in purple and woodland compiled from  
 aerial photographs taken 1981 and other source data