

UNITED STATES  
DEPARTMENT OF THE INTERIOR  
BUREAU OF LAND MANAGEMENT

APPLICATION FOR PERMIT TO DRILL OR DEEPEN

1a. TYPE OF WORK

DRILL ☒

DEEPEN ☐

b. TYPE OF WELL

OIL  
WELL ☐

GAS  
WELL ☒

OTHER

SINGLE  
ZONE ☒

MULTIPLE  
ZONE ☐

2. NAME OF OPERATOR

NORTHWEST PIPELINE CORPORATION

OGRID 16189

3. ADDRESS AND TELEPHONE NO.

c/o Walsh Engr. & Prod. Corp.

7415 E. Main Farmington, N.M. 87402

505 327-4892

4. LOCATION OF WELL (Report location clearly and in accordance with any State requirements.)

At surface 1110' FNL & 1675' FWL

At proposed prod. zone Same

14. DISTANCE IN MILES AND DIRECTION FROM NEAREST TOWN OR POST OFFICE\*

25 miles Northeast of Blanco, New Mexico

10. DISTANCE FROM PROPOSED\*  
LOCATION TO NEAREST  
PROPERTY OR LEASE LINE, FT.  
(Also to nearest drig. unit line, if any)

1110'

16. NO. OF ACRES IN LEASE

1920

18. DISTANCE FROM PROPOSED LOCATION\*  
TO NEAREST WELL, DRILLING, COMPLETED,  
OR APPLIED FOR, ON THIS LEASE, FT.

800'

19. PROPOSED DEPTH

6180'

21. ELEVATIONS (Show whether DF, RT, GR, etc.)

6481' GR

23.

SIZE OF HOLE	GRADE SIZE OF CASING	WEIGHT PER FOOT	NO. OF ACRES ASSIGNED TO THIS WELL	ROTARY OR CABLE TOOLS
12-1/4"	9-5/8", K-55	36.0	250'	Rotary
8-3/4"	7", K-55	20.0	3795'	
6-1/4"	4-1/2", K-55	10.5	3695-6180'	

22. APPROX. DATE WORK WILL START\*  
May 15, 1995

24. DRILLING OPERATIONS AUTHORIZED ARE  
SUBJECT TO COMPLIANCE WITH  
ATTACHED "GENERAL REQUIREMENTS"

161 cuft Cl "B" w/3% CaCl2  
951 cuft 65/35 Pos, 171 cuft Cl "B"  
415 cuft Cl "B" w/4% gel &  
additives

NORTHWEST PIPELINE proposes to drill a vertical well to develop the Mesa Verde formation at the above described site in accordance with the attached drilling and surface use programs.

This location has been archaeologically surveyed by CRMC. Copies of the report will be submitted directly to your office.

This APD also is serving as an application to obtain BLM road right-of-way.

The right-of-way is an existing road that crosses the NW/NW/4 of Section 33, T31N, R5W where it connects to Forest Road #309. Forest Road #309 continues 3 miles NW where it joins the main Rosa road. The Rosa road travels in a SW direction for 13 miles where it connects to the Sims Mesa Highway.

IN ABOVE SPACE DESCRIBE PROPOSED PROGRAM: If proposal is to deepen, give data on present productive zone and proposed new productive zone. If proposal is to drill or deepen directionally, give pertinent data on subsurface locations and measured and true vertical depths. Give blowout preventer program, if any.

24.

SIGNED Paul C. Thompson TITLE Paul C. Thompson, Agent DATE 3/15/95

(This space for Federal or State office use)

PERMIT NO.

APPROVAL DATE

Application approval does not warrant or certify that the applicant has a legal or equitable title to those rights in the subject lease which would entitle the applicant to conduct operations thereon.

CONDITIONS OF APPROVAL, IF ANY:

APPROVED BY

TITLE

DATE

RECEIVED

OIL CON. DIV.

APPROVED  
AS AMENDED

DISTRICT MANAGER

District I  
PO Box 1980, Hobbs, NM 88241-1980  
District II  
PO Drawer DD, Artesia, NM 88211-0719  
District III  
1000 Rio Brazos Rd., Aztec, NM 87410  
District IV  
PO Box 2088, Santa Fe, NM 87504-2088

State of New Mexico  
Energy, Minerals & Natural Resources Department

OIL CONSERVATION DIVISION  
PO Box 2088  
Santa Fe, NM 87504-2088

Form C-102  
Revised February 21, 1994  
Instructions on back  
Submit to Appropriate District Office  
State Lease - 4 Copies  
Fee Lease - 3 Copies

☐ AMENDED REPORT

WELL LOCATION AND ACREAGE DEDICATION PLAT

<sup>1</sup> API Number 30-039-25514		<sup>2</sup> Pool Code 72319		<sup>3</sup> Pool Name BLANCO MESA VERDE	
<sup>4</sup> Property Code 008480		<sup>5</sup> Property Name Rosa Unit			<sup>6</sup> Well Number 147
<sup>7</sup> OGRID No. 16189		<sup>8</sup> Operator Name Northwest Pipeline Production			<sup>9</sup> Elevation 6481'

<sup>10</sup> Surface Location

UL or lot no.	Section	Township	Range	Lot Idn	Feet from the	North/South line	Feet from the	East/West line	County
C	33	31 N	5 W		1110'	North	1675'	West	R.A.

<sup>11</sup> Bottom Hole Location If Different From Surface

UL or lot no.	Section	Township	Range	Lot Idn	Feet from the	North/South line	Feet from the	East/West line	County

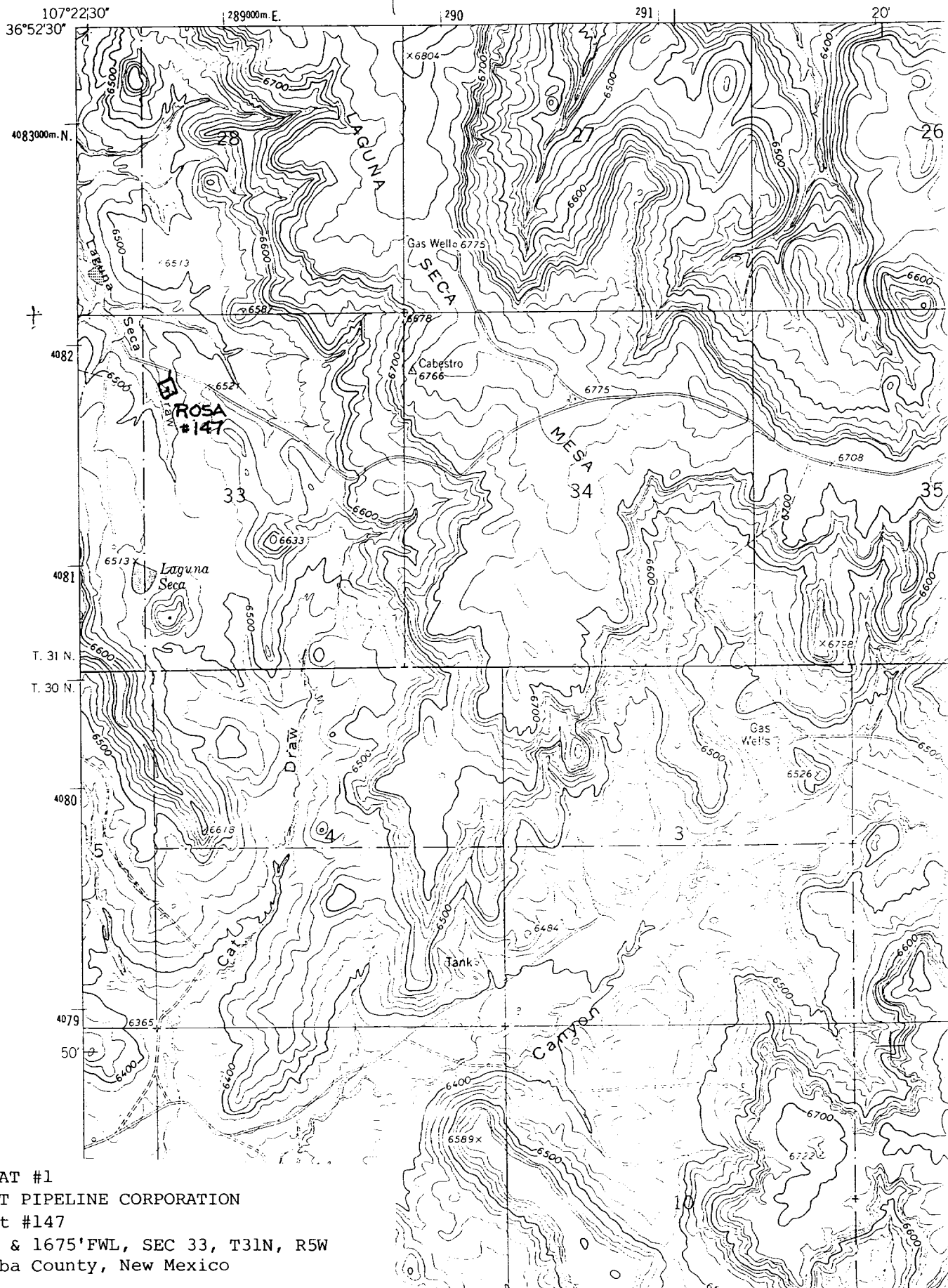
<sup>12</sup> Dedicated Acres 320	<sup>13</sup> Joint or Infill N	<sup>14</sup> Consolidation Code U	<sup>15</sup> Order No.
--------------------------------------	------------------------------------	---------------------------------------	-------------------------

NO ALLOWABLE WILL BE ASSIGNED TO THIS COMPLETION UNTIL ALL INTERESTS HAVE BEEN CONSOLIDATED  
OR A NON-STANDARD UNIT HAS BEEN APPROVED BY THE DIVISION

	<p><b>RECEIVED</b> MAY 30 1995 OIL CON. DIV. DIST. 3</p>	<p><b><sup>17</sup> OPERATOR CERTIFICATION</b></p> <p>I hereby certify that the information contained herein is true and complete to the best of my knowledge and belief</p> <p><i>Paul C. Thompson</i> Signature Paul C. Thompson, P.E. (Agent) Printed Name President Walsh Engr. &amp; Prod. Corp. Title 3/15/95 Date</p>
		<p><b><sup>18</sup> SURVEYOR CERTIFICATION</b></p> <p>I hereby certify that the well location shown on this plat was plotted from field notes of actual surveys made by me or under my supervision, and that the same is true and correct to the best of my belief.</p> <p>2-20-95 Date of Survey Signature and Seal of Professional Surveyor:  Certificate Number</p>

4552 IV NW  
(BANCOS MESA NW)

UNITED STATES  
DEPARTMENT OF THE INTERIOR  
GEOLOGICAL SURVEY



PLAT #1  
NORTHWEST PIPELINE CORPORATION  
Rosa Unit #147  
1110' FNL & 1675' FWL, SEC 33, T31N, R5W  
Rio Arriba County, New Mexico