

District I  
PO Box 1980, Hobbs, NM 88241-1980  
District II  
PO Drawer DD, Artesia, NM 88211-0719  
District III  
1000 Rio Brazos Rd., Aztec, NM 87410  
District IV  
PO Box 2088, Santa Fe, NM 87504-2088

State of New Mexico  
Energy, Minerals & Natural Resources Department

OIL CONSERVATION DIVISION  
PO Box 2088  
Santa Fe, NM 87504-2088

Form C-10  
Revised February 21, 199  
Instructions on back  
Submit to Appropriate District Office  
State Lease - 4 Copies  
Fee Lease - 3 Copies

☐ AMENDED REPORT

WELL LOCATION AND ACREAGE DEDICATION PLAT

API Number		Pool Code 72319	Pool Name Blanco Mesa Verde
Property Code 008480	Property Name Rosa Unit		Well Number 160
OGRID No. 120782	Operator Name Williams Production Co.		Elevation 6438'

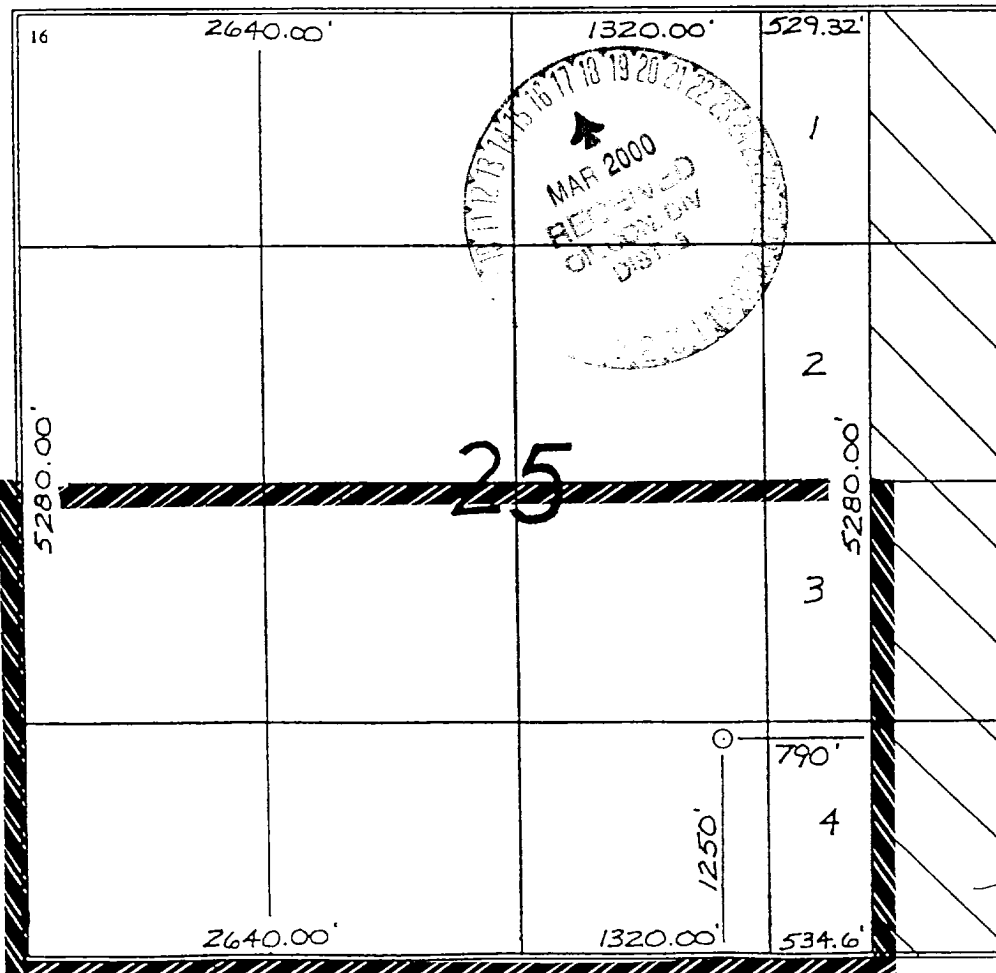
10 Surface Location

UL or lot no. 0	Section 25	Township 31 N	Range 6 W	Lot Idn	Feet from the 1250	North/South line South	Feet from the 790	East/West line East	County R.A.
--------------------	---------------	------------------	--------------	---------	-----------------------	---------------------------	----------------------	------------------------	----------------

11 Bottom Hole Location If Different From Surface

UL or lot no.	Section	Township	Range	Lot Idn	Feet from the	North/South line	Feet from the	East/West line	County
Dedicated Acres 272.32	Joint or Infill N	Consolidation Code U		Order No.					

NO ALLOWABLE WILL BE ASSIGNED TO THIS COMPLETION UNTIL ALL INTERESTS HAVE BEEN CONSOLIDATED  
OR A NON-STANDARD UNIT HAS BEEN APPROVED BY THE DIVISION



17 OPERATOR CERTIFICATION

I hereby certify that the information contained herein is true and complete to the best of my knowledge and belief.

*Paul C. Thompson*  
Signature

Paul C. Thompson, P.E. (Agent)

Printed Name President

Walsh Engr. & Prod. Corp.

Title

2/23/96

Date

18 SURVEYOR CERTIFICATION

I hereby certify that the well location shown on this plat was plotted from field notes of actual surveys made by me or under my supervision, and that the same is true and correct to the best of my belief.

11-27-95

Date of Survey

Signature and Seal of Professional Surveyor

*HERNANDEZ*  
8857  
6857  
Certificate Number