

UNITED STATES  
DEPARTMENT OF THE INTERIOR  
BUREAU OF LAND MANAGEMENT

FORM APPROVED  
Budget Bureau No. 1004-0135  
Expires: March 31, 1993

SUNDRY NOTICES AND REPORTS ON WELLS

Do not use this form for proposals to drill or to deepen or reentry to a different reservoir. Use "APPLICATION FOR PERMIT—" for such proposals

SUBMIT IN TRIPLICATE

1. Type of Well  
☐ Oil Well ☒ Gas Well ☐ Other

2. Name of Operator  
Williams Production Company

3. Address and Telephone No. C/O Walsh Engineering & Production Corp.  
7415 East Main Farmington, NM 87402 505-327-4892

4. Location of Well (Footage, Sec., T., R., M., or Survey Description)  
1495' FSL & 1210 FEL, Section 1, T31N, R6W

Lease Designation and Serial No.  
SF - 078772

If Indian, Allottee or Tribe Name

7. If Unit or CA, Agreement Designation  
Rosa Unit

8. Well Name and No.  
Rosa Unit #164A

9. API Well No.  
20-039-26080

10. Field and Pool, or Exploratory Area  
Blanco Mesa Verde

11. County or Parish, State  
Rio Arriba County, NM

CHECK APPROPRIATE BOX(s) TO INDICATE NATURE OF NOTICE, REPORT, OR OTHER DATA

TYPE OF SUBMISSION

- ☒ Notice of Intent  
☐ Subsequent Report  
☐ Final Abandonment

TYPE OF ACTION

- ☐ Abandonment  
☐ Recompletion  
☐ Plugging Back  
☐ Casing Repair  
☐ Altering Casing  
☐ Other

- ☒ Change of Plans  
☐ New Construction  
☐ Non-Routine Fracturing  
☐ Water Shut-Off  
☐ Conversion to Injection  
☐ Dispose Water  
(Note: Report results of multiple completion on Well Completion or Recompletion Report and Log form.)

13. Describe Proposed or Completed Operations (Clearly state all pertinent details, and give pertinent dates, including estimated date of starting any proposed work. If well is directionally drilled, give subsurface locations and measured and true vertical depths for all markers and zones pertinent to this work.)\*

Williams Production proposes to change the location of this well slightly to accommodate another well which will be directionally drilled from this pad. Old location: 1480 FSL and 1190 FEL. New location: 1495 FSL and 1210 FEL All other aspects of the APD package remain the same.

CAS  
4/12/99

14. I hereby certify that the foregoing is true and correct

Signed Paul C. Thompson Title Agent Date May 8, 1998

(This space for Federal or State office use)

Approved by Chip Haraden Title Acting Team Lead Date 4/12/99  
Conditions of approval, if any:

Title 18 U.S.C. Section 1001, makes it a crime for any person knowingly and willfully to make to any department or agency of the United States any false, fictitious or fraudulent statements or representations as to any matter within its jurisdiction.

NMOCD

District I  
PO Box 1980, Hobbs, NM 88241-1980  
District II  
PO Drawer 00, Artesia, NM 88211-0719  
District III  
1000 Rio Brazos Rd., Aztec, NM 87410  
District IV  
PO Box 2088, Santa Fe, NM 87504-2088

State of New Mexico  
Energy, Minerals & Natural Resources Department

OIL CONSERVATION DIVISION  
PO Box 2088  
Santa Fe, NM 87504-2088

Form C-102  
Revised February 21, 1994  
Instructions on back  
Submit to Appropriate District Office  
State Lease - 4 Copies  
Fee Lease - 3 Copies

99 FEB 19 AM 8:42 AM  
AMENDED REPORT

070 FARMINGTON, NM

WELL LOCATION AND ACREAGE DEDICATION PLAT

|                          |   |                     |                                 |
|--------------------------|---|---------------------|---------------------------------|
| *API Number              |   | *Pool Code<br>72319 | *Pool Name<br>Blanco Mesa Verde |
| *Property Code<br>008480 | *Property Name<br>ROSA UNIT                   |                     | *Well Number<br>164A            |
| *OGRID No.<br>120782     | *Operator Name<br>WILLIAMS PRODUCTION COMPANY |                     | *Elevation<br>6313'             |

<sup>10</sup> Surface Location

|                    |              |                 |             |         |                       |                           |                       |                        |                      |
|--------------------|--------------|-----------------|-------------|---------|-----------------------|---------------------------|-----------------------|------------------------|----------------------|
| UL or lot no.<br>J | Section<br>1 | Township<br>31N | Range<br>6W | Lot Idn | Feet from the<br>1495 | North/South line<br>SOUTH | Feet from the<br>1210 | East/West line<br>EAST | County<br>RIO ARriba |
|--------------------|--------------|-----------------|-------------|---------|-----------------------|---------------------------|-----------------------|------------------------|----------------------|

<sup>11</sup> Bottom Hole Location If Different From Surface

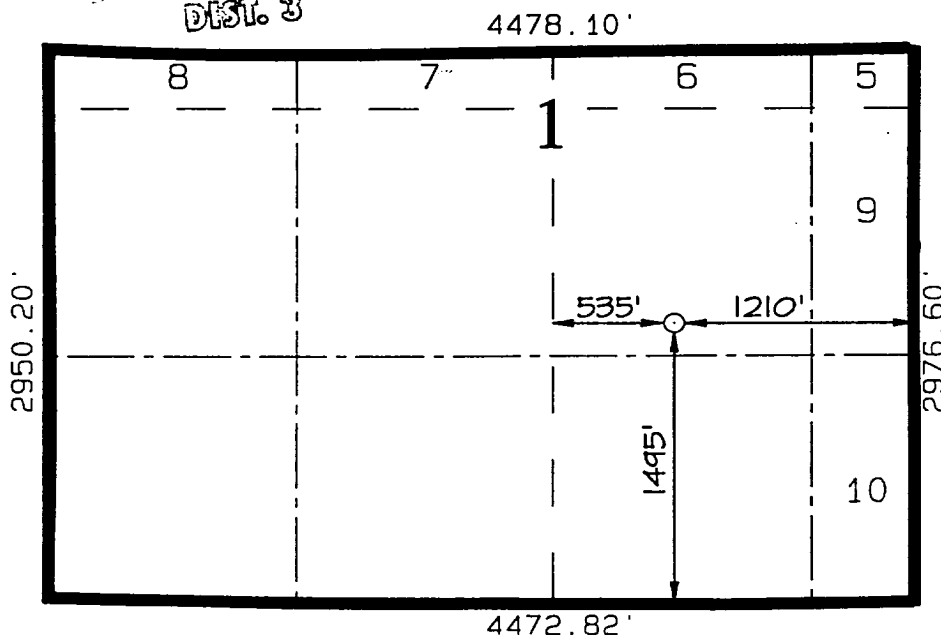
|               |         |          |       |         |               |                  |               |                |        |
|---------------|---------|----------|-------|---------|---------------|------------------|---------------|----------------|--------|
| UL or lot no. | Section | Township | Range | Lot Idn | Feet from the | North/South line | Feet from the | East/West line | County |
|---------------|---------|----------|-------|---------|---------------|------------------|---------------|----------------|--------|

|   |                                    |                                       |                         |
|---|------------------------------------|---------------------------------------|-------------------------|
| <sup>12</sup> Dedicated Acres<br>303.88 | <sup>13</sup> Joint or Infill<br>I | <sup>14</sup> Consolidation Code<br>U | <sup>15</sup> Order No. |
|---|------------------------------------|---------------------------------------|-------------------------|

NO ALLOWABLE WILL BE ASSIGNED TO THIS COMPLETION UNTIL ALL INTERESTS HAVE BEEN CONSOLIDATED  
NON-STANDARD UNIT HAS BEEN APPROVED BY THE DIVISION

16

RECEIVED  
APR 15 1999  
OIL CON. DIV.  
DIST. 3



<sup>17</sup> OPERATOR CERTIFICATION

I hereby certify that the information contained herein is true and complete to the best of my knowledge and belief.

*Paul C. Thompson*  
Signature  
Paul C. Thompson  
Printed Name  
Agent  
Title  
2/18/99  
Date

<sup>18</sup> SURVEYOR CERTIFICATION

I hereby certify that the well location shown on this plat was plotted from field notes of actual surveys made by me or under my supervision, and that the same is true and correct to the best of my belief.

FEBRUARY 3, 1999  
Date of Survey  
Signature and Seal of Professional Surveyor

NEALE C. EDWARDS  
NEW MEXICO  
6857  
Certificate Number 6857

HOLD CTM FOR NSP

**WILLIAMS PRODUCTION COMPANY ROSA UNIT #164A**  
**1495' FSL & 1210' FEL, SECTION 1, T31N, R6W, NMPM**  
**RIO ARriba COUNTY, NEW MEXICO**  
**GROUND ELEVATION: 6313'**

