

District II  
PO Drawer 00, Artesia, NM 88211-0719

District III  
1000 Rio Brazos Rd., Aztec, NM 87410

District IV  
PO Box 2088, Santa Fe, NM 87504-2088

OIL CONSERVATION DIVISION  
PO Box 2088  
Santa Fe, NM 87504-2088

Submit to Appropriate District Office  
State Lease - 4 Copies  
Fee Lease - 3 Copies

☒ AMENDED REPORT

### WELL LOCATION AND ACREAGE DEDICATION PLAT

API Number 30-039-26149		Pool Code 72319	Pool Name Blanco Mesa Verde
Property Code	Property Name ROSA UNIT COM		Well Number 169A
GRID No. 120782	Operator Name WILLIAMS PRODUCTION COMPANY		Elevation 6351'

#### 10 Surface Location

UL or lot no.	Section	Township	Range	Lot Idn	Feet from the	North/South line	Feet from the	East/West line	County
J	3	31N	6W		2375	SOUTH	1750	EAST	RIO ARriba

#### 11 Bottom Hole Location If Different From Surface

UL or lot no.	Section	Township	Range	Lot Idn	Feet from the	North/South line	Feet from the	East/West line	County
K	3	31N	6W		1788	SOUTH	1606	WEST	SAN JUAN

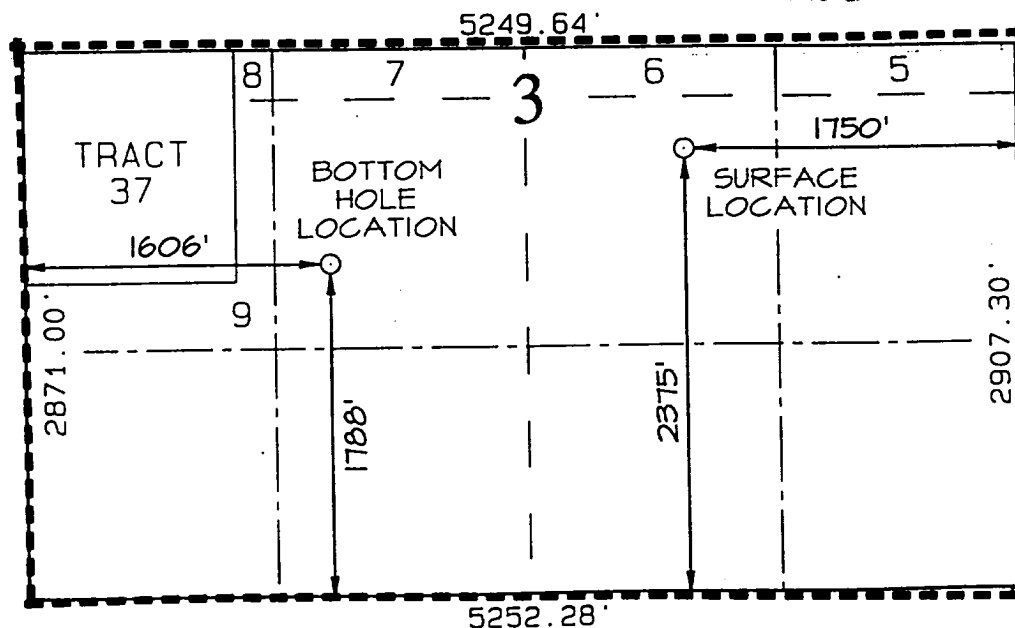
Dedicated Acres 352.87	Joint or Infill Y	Consolidation Code U	Order No.
---------------------------	----------------------	-------------------------	-----------

NO ALLOWABLE WILL BE ASSIGNED TO THIS COMPLETION UNTIL ALL INTERESTS HAVE BEEN CONSOLIDATED  
OR A NON-STANDARD UNIT HAS BEEN APPROVED BY THE DIVISION

15

RECEIVED  
AUG 13 1999

OIL CON. DIV.  
DIST. 3



#### 17 OPERATOR CERTIFICATION

I hereby certify that the information contained herein is true and complete to the best of my knowledge and belief.

Signature  
Paul C. Thompson  
Printed Name  
Agent  
Title  
8/12/99  
Date

#### 18 SURVEYOR CERTIFICATION

I hereby certify that the well location shown on this plat was plotted from field notes of actual surveys made by me or under my supervision, and that the same is true and correct to the best of my belief.

FEBRUARY 3, 1999  
Date of Survey  
Signature and Seal of Professional Surveyor  
NEALE C. EDWARDS  
NEW MEXICO  
6857  
Certificate Number 6857