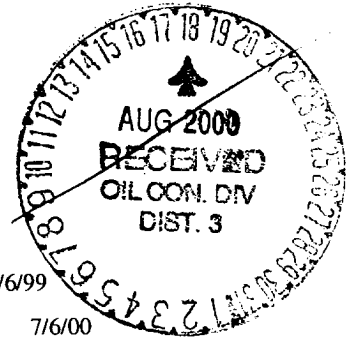


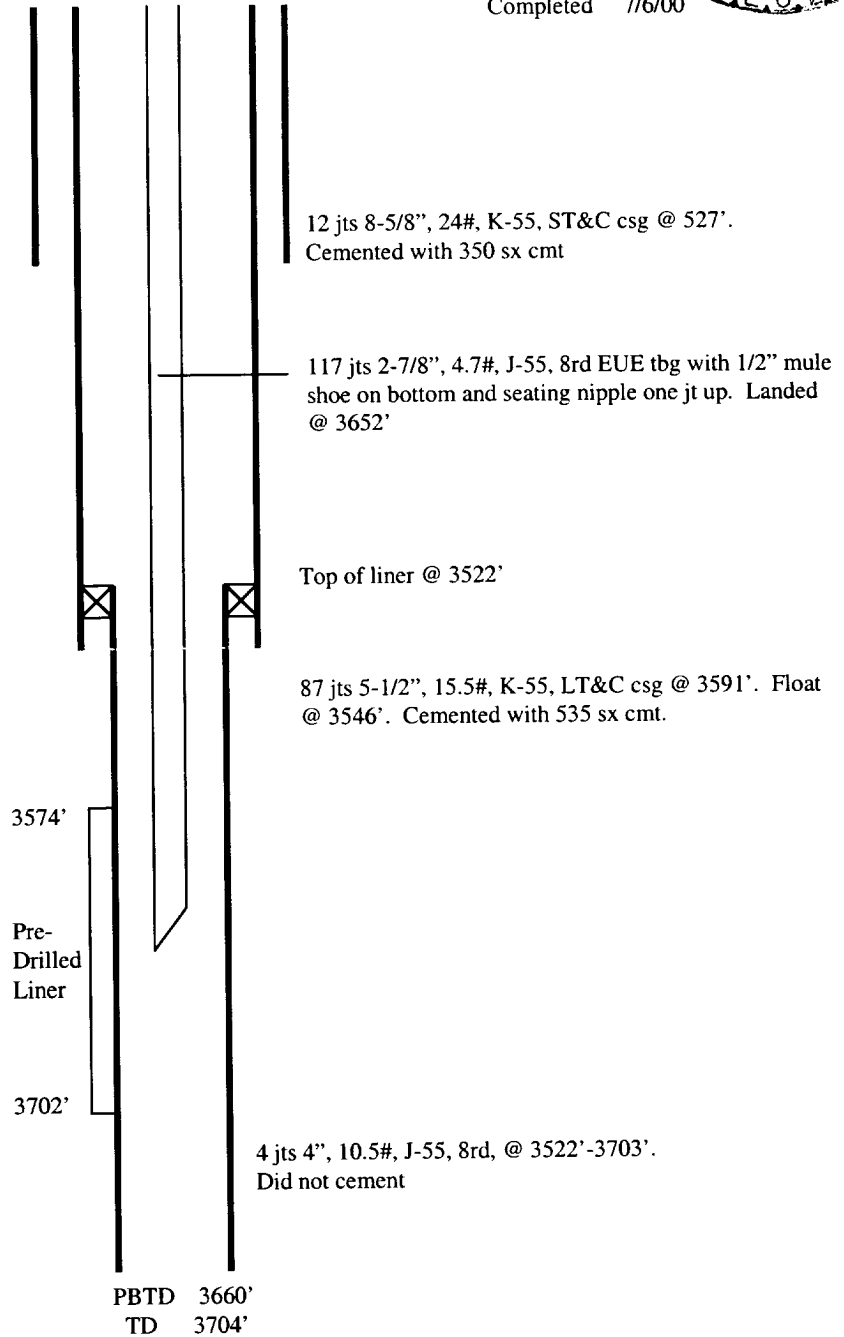
ROSA UNIT #500
BASIN FRUITLAND COAL



Spud 9/6/99
Completed 7/6/00

Location:
990' FNL and 970' FWL
NW/4 NW/4 Sec 23D, T31N R4W
Rio Arriba, New Mexico
Elevation: 6844' GR

<u>Top</u>	<u>Depth</u>
Ojo Alamo	3058'
Kirtland	3276'
Fruitland	3540'



Hole Size	Casing	Cement	Top of CMT
12-1/4"	8-5/8", 24#	350 sx	Surface
7-7/8"	5-1/2", 15.5#	535 sx	Surface
6-1/4"	4", 10.5#	Did not cmt	N/A