

UNITED STATES  
DEPARTMENT OF THE INTERIOR  
BUREAU OF LAND MANAGEMENT

SUBMIT IN  
DUPLICATE

(See other instructions on  
reverse side)

FORM APPROVED  
OMB NO. 1004-0137  
Expires: February 28, 1995

5. LEASE DESIGNATION AND LEASE NO.  
SF-078893

6. IF INDIAN, ALLOTTEE OR

WELL COMPLETION OR RECOMPLETION REPORT AND LOG\*

1a. TYPE OF WELL: ☐ OIL WELL ☒ GAS WELL ☐ DRY ☐ OTHER \_\_\_\_\_

b. TYPE OF COMPLETION:  
☒ NEW WELL ☐ WORKOVER ☐ DEEPEN ☐ PLUG BACK ☐ DIFF. RESVR. ☐ OTHER \_\_\_\_\_

2. NAME OF OPERATOR  
WILLIAMS PRODUCTION COMPANY

3. ADDRESS AND TELEPHONE NO.  
P.O. BOX 3102 MS 37-2 TULSA, OK 74101 (918) 573-6257

4. LOCATION OF WELL (Report location clearly and in accordance with any State requirements)  
At Surface: 990' FNL & 970' FWL  
At top production interval reported below :  
At total depth:

7. UNIT AGREEMENT NAME  
ROSA UNIT

8. FARM OR LEASE NAME, WELL NO.  
ROSA UNIT #500

9. API WELL NO.  
30-039-26165

10. FIELD AND POOL, OR WILDCAT  
BASIN FRUITLAND COAL

11. SEC., T., R., M., OR BLOCK AND  
SURVEY OR AREA  
NW/4 NW/4 SEC 23-31N-4W

12. COUNTY OR  
RIO ARriba

13. STATE  
NEW MEXICO

19. ELEVATION CASINGHEAD

15. DATE  
SPUDDED  
09/06/1999

16. DATE T.D.  
REACHED  
06/14/2000

17. DATE COMPLETED (READY TO PRODUCE)  
07/06/2000

14. PERMIT NO. DATE ISSUED  
AUG 2000  
RECEIVED  
OIL CON. DIV  
DIST. 3

18. ELEVATIONS (DK, RKB, RT, GR, ETC.)\*  
6844' GR

20. TOTAL DEPTH, MD & TVD  
3704' MD

21. PLUG, BACK T.D., MD & TVD  
3660' MD

22. IF MULTICOMP.,  
HOW MANY

23. INTERVALS  
DRILLED BY

ROTARY TOOLS  
x

CABLE TOOLS

24. PRODUCING INTERVAL(S), OF THIS COMPLETION - TOP, BOTTOM, NAME (MD AND TVD)\*  
BASIN FRUITLAND COAL 3574' - 3702'

25. WAS DIRECTIONAL SURVEY MADE  
YES

26. TYPE ELECTRIC AND OTHER LOGS RUN  
COMP NEUT, INDUCTION

27. WAS WELL CORED  
NO

28. CASING REPORT (Report all strings set in well)

CASING SIZE/GRADE.	WEIGHT, LB/FT	DEPTH SET (MD)	HOLE SIZE	TOP OF CEMENT, CEMENTING RECORD	AMOUNT PULLED
8-5/8" K-55	24#	527'	12-1/4"	350 SX - SURFACE	
5 1/2" K-55	15.5#	3610'	7-7/8"	535 SX - SURFACE	

29. LINER RECORD

SIZE	TOP (MD)	BOTTOM (MD)	SACKS CEMENT*	SCREEN (MD)	SIZE	DEPTH SET (MD)	PACKER SET (MD)
4"	3522'	3703'	N/A		2-3/8"	3652'	

31. PERFORATION RECORD (Interval, size, and number)

Ran pre-perforated liner

32. ACID, SHOT, FRACTURE, CEMENT SQUEEZE, ETC.

DEPTH INTERVAL (MD) AMOUNT AND KIND OF MATERIAL USED

33. PRODUCTION

DATE OF FIRST PRODUCTION		PRODUCTION METHOD (Flowing, gas lift, pumping-size and type of pump)				WELL STATUS (PRODUCING OR SI)	
		Flowing				SI waiting on pipeline	
DATE OF TEST	TESTED	CHOKE SIZE	PROD'N FOR TEST PERIOD	OIL - BBL	GAS - MCF	WATER - BBL	GAS-OIL RATIO
7/10/00	3 hr	3/4"			108		
FLOW TBG PRESS	CASING PRESSURE	CALCULATED 24-HOUR RATE		OIL - BBL	GAS - MCF	WATER - BBL	OIL GRAVITY-API (CORR.)
SITP - 150	SICP - 465				864		

34. DISPOSITION OF GAS (Sold, used for fuel, vented, etc.): TO BE SOLD

TEST WITNESSED BY: CHIK CHARLEY

35. LIST OF ATTACHMENTS: SUMMARY OF POROUS ZONES, WELLBORE DIAGRAM

36. I hereby certify that the foregoing and attached information is complete and correct as determined from all available records

SIGNED Inaey Ross TITLE Production Analyst DATE August 2, 2000

ACCEPTED FOR RECORD

AUG 22 2000

FARMINGTON FIELD OFFICE  
BY [Signature]

NMOCOD

37. SUMMARY OF POROUS ZONES: (Show all important zones of porosity and contents thereof, cored intervals, and all drill-stem tests, including depth interval tested, cushion used, time tool open, flowing and shut-in pressures, and recoveries):

38. GEOLOGIC MARKERS

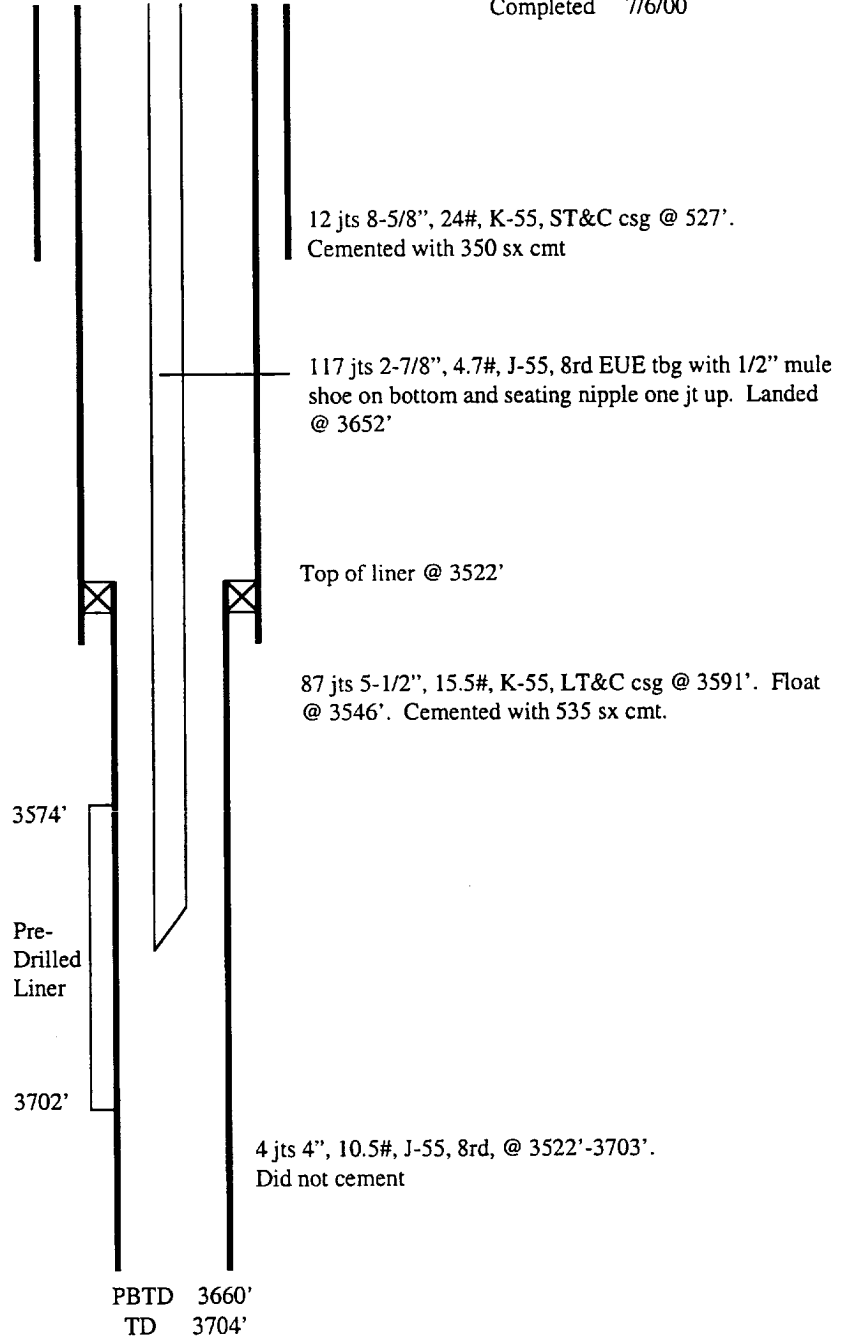
FORMATION	TOP	BOTTOM	DESCRIPTION, CONTENTS, ETC.	NAME	TOP		
					NAME	MEASURED DEPTH	TRUE VERTICAL DEPTH
OJO ALAMO	3058'	3276'					
KIRTLAND	3276'	3540'					
FRUITLAND	3540'	3618'					
TOP OF COAL	3618'						

ROSA UNIT #500  
BASIN FRUITLAND COAL

Spud 9/6/99  
Completed 7/6/00

Location:  
990' FNL and 970' FWL  
NW/4 NW/4 Sec 23D, T31N R4W  
Rio Arriba, New Mexico  
Elevation: 6844' GR

<u>Top</u>	<u>Depth</u>
Ojo Alamo	3058'
Kirtland	3276'
Fruitland	3540'



Hole Size	Casing	Cement	Top of CMT
12-1/4"	8-5/8", 24#	350 sx	Surface
7-7/8"	5-1/2", 15.5#	535 sx	Surface
6-1/4"	4", 10.5#	Did not cmt	N/A