

DISTRICT I
P.O. Box 1980, Hobbs, NM 88241-1980

State of New Mexico
Energy, Minerals and Natural Resources Department

Form C-101
Revised February 10, 1994
Instructions on back

DISTRICT II
P.O. Drawer DD, Artesia, NM 88211-0719

OIL CONSERVATION DIVISION

PO BOX 2088
Santa Fe, NM 87504-2088

Submit to Appropriate District Office

State Lease - 6 Copies
Fee Lease - 5 Copies

DISTRICT III
1000 Rio Brazos Rd., Aztec, NM 87410

DISTRICT IV
PO Box 2088, Santa Fe, NM 87504-2088

☐ AMENDED REPORT

APPLICATION FOR PERMIT TO DRILL, RE-ENTER, DEEPEN, PLUG BACK OR ADD A ZONE

¹ Operator Name and Address Williams Production Company c/o Walsh Engineering 7415 E. Main St., Farmington, NM 87402		² OGRID Number 120782
⁴ Property Code 17033	⁵ Property Name Rosa Unit	³ API Number 30-039-26202
		⁶ Well No. 342

⁷ Surface Location

UL or lot no.	Section	Township	Range	Lot Idn	Feet from the	North/South Line	Feet from the	East/West Line	County
G	21	31N	6W		1850	North	1705	East	Rio Arriba

⁸ Proposed Bottom Hole Location If Different From Surface

UL or lot no.	Section	Township	Range	Lot Idn	Feet from the	North/South Line	Feet from the	East/West Line	County
⁹ Proposed Pool 1 Basin Fruitland Coal					¹⁰ Proposed Pool 2				

¹¹ Work Type Code N	¹² Well Type Code G	¹³ Cable/Rotary R	¹⁴ Lease Type Code S	¹⁵ Ground Level Elevation 6316'
¹⁶ Multiple NO	¹⁷ Proposed Depth 3191'	¹⁸ Formation Fruitland	¹⁹ Contractor N/A	²⁰ Spud Date August 1, 1999

²¹ Proposed Casing and Cement Program

Hole Size	Casing Size	Casing weight/feet	Setting Depth	Sacks of Cement	Estimated TOC
12-1/4"	9-5/8"	36#	250'	150 sx	Surface
8-3/4"	7"	20#	3005'	455 sx + 150 sx	Surface
6-1/4"	5-1/2"	15.5#	2905' - 3191'	none	

²² Describe the proposed program. If this application is to DEEPEN or PLUG BACK give the data on the present productive zone and proposed new productive zone. Describe the blowout prevention program, if any. Use additional sheets if necessary.

Williams Production Company proposes to drill a vertical well to test the Basin Fruitland Coal formation. The Fruitland Coals will be open hole cavitated and the 5-1/2" liner will not be cemented. A 2000# double ram BOP will be installed and tested to 1500# after surface casing is set.

²³ I hereby certify that the information given above is true and complete to the best of my knowledge and belief.

Signature: *Paul C. Thompson*
Printed name: Paul C. Thompson, P.E.

Title: Agent

Date: 07/07/99

Phone: 505.327.4892

OIL CONSERVATION DIVISION

Approved by: *Ernie Bush* 7/7/99
Title: DEPUTY OIL & GAS INSPECTOR, DIST. #3
Approval Date: JUL 14 1999 Expiration Date: JUL 14 2000

Conditions of Approval
Attached ☐

District I
PO Box 1980, Hobbs, NM 88241-1980

District II
PO Drawer DD, Artesia, NM 88211-0719

District III
1000 Rio Brazos Rd., Aztec, NM 87410

District IV
PO Box 2088, Santa Fe, NM 87504-2088

State of New Mexico
Energy, Minerals & Natural Resources Department

OIL CONSERVATION DIVISION
PO Box 2088
Santa Fe, NM 87504-2088

Form C-102
Revised February 21, 1994
Instructions on back
Submit to Appropriate District Office
State Lease - 4 Copies
Fee Lease - 3 Copies

☐ AMENDED REPORT

WELL LOCATION AND ACREAGE DEDICATION PLAT

*API Number 30-039-26202		*Pool Code 71629	*Pool Name Basin Fruitland Coal
*Property Code 14033	*Property Name ROSA UNIT		*Well Number 342
*OGRID No. 120782	*Operator Name WILLIAMS PRODUCTION COMPANY		*Elevation 6316'

¹⁰ Surface Location

UL or lot no.	Section	Township	Range	Lot Idn	Feet from the	North/South line	Feet from the	East/West line	County
G	21	31N	6W		1850	NORTH	1705	EAST	RIO ARriba

¹¹ Bottom Hole Location If Different From Surface

UL or lot no.	Section	Township	Range	Lot Idn	Feet from the	North/South line	Feet from the	East/West line	County

¹² Dedicated Acres 345.32 320	¹³ Joint or Infill N	¹⁴ Consolidation Code U	¹⁵ Order No.
--	------------------------------------	---------------------------------------	-------------------------

NO ALLOWABLE WILL BE ASSIGNED TO THIS COMPLETION UNTIL ALL INTERESTS HAVE BEEN CONSOLIDATED OR A NON-STANDARD UNIT HAS BEEN APPROVED BY THE DIVISION

¹⁶ 5280.00'	TRACT 40			5280.00'
	LOT 1	LOT 2	LOT 3	
<div style="text-align: center;">5276.04'</div>				

1850'

1705'

21

RECEIVED
JUL 12 1999
OIL CON. DIV.
DIST. 3

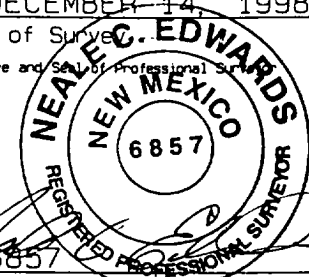
¹⁷ OPERATOR CERTIFICATION

I hereby certify that the information contained herein is true and complete to the best of my knowledge and belief.

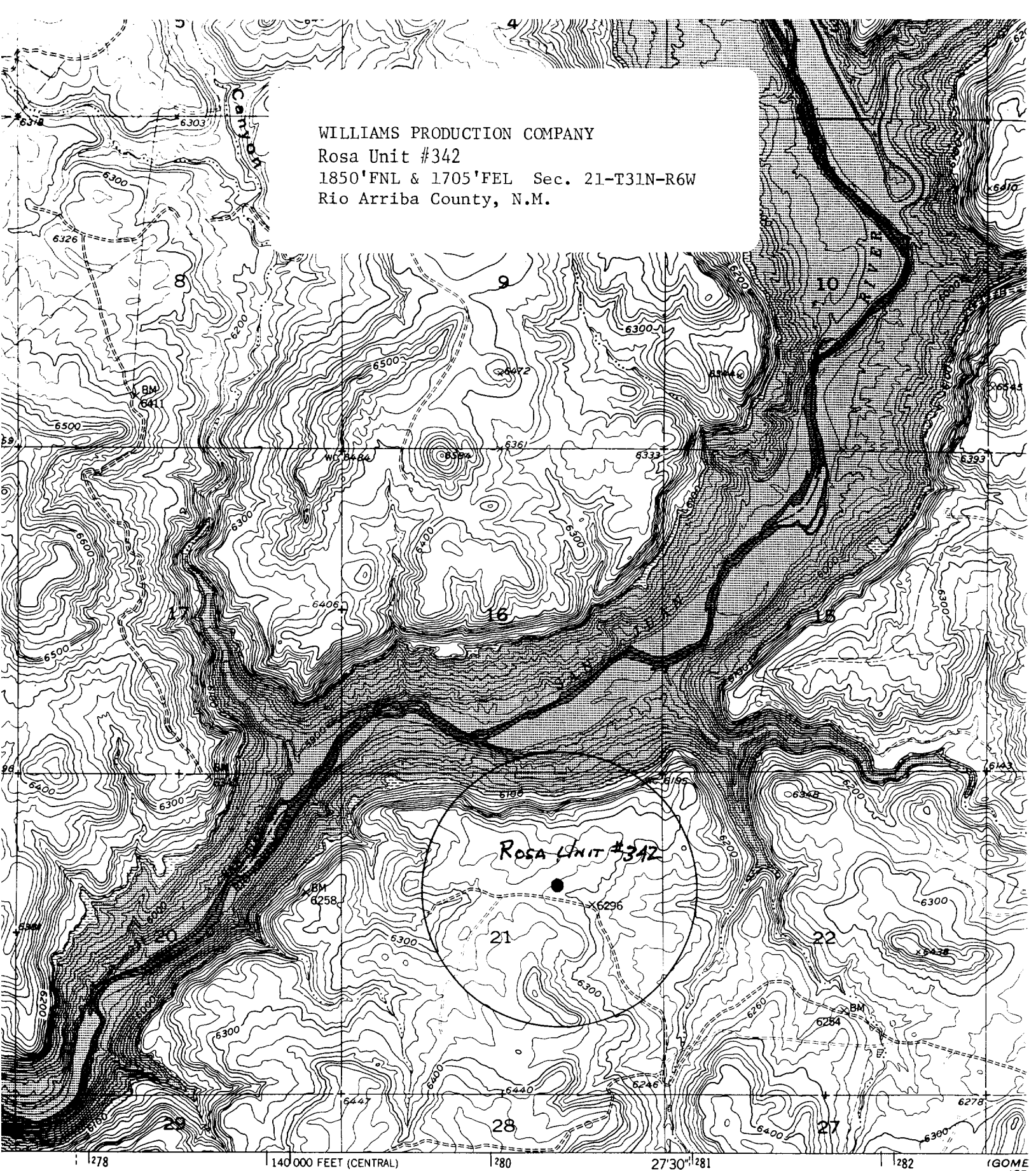
Paul C. Thompson
Signature
Paul C. Thompson
Printed Name
Agent
Title
7/8/99
Date

¹⁸ SURVEYOR CERTIFICATION

I hereby certify that the well location shown on this plat was plotted from field notes of actual surveys made by me or under my supervision and that the same is true and correct to the best of my belief.

DECEMBER 14, 1998
Date of Survey
Signature and Seal of Professional Surveyor

Certificate Number

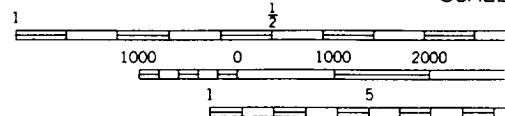
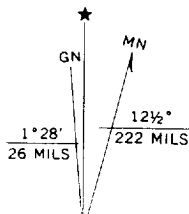
WILLIAMS PRODUCTION COMPANY
 Rosa Unit #342
 1850'FNL & 1705'FEL Sec. 21-T31N-R6W
 Rio Arriba County, N.M.



ted, and published by the Geological Survey
 SGS and NOS/NOAA

by photogrammetric methods from aerial photographs
 Field check 1954

ection. 1927 North American datum
 grid based on New Mexico coordinate system,
 east zones
 Universal Transverse Mercator grid ticks,



CONTOUR IN
 NATIONAL GEODETIC