

UNITED STATES  
DEPARTMENT OF THE INTERIOR  
BUREAU OF LAND MANAGEMENT

## APPLICATION FOR PERMIT TO DRILL, DEEPEN, OR PLUG BACK

5. LEASE DESIGNATION AND SERIAL NO.

SF-078771

6. IF INDIAN, ALLOTTEE OR TRIBE NAME

7. UNIT AGREEMENT NAME

Rosa Unit

8. FARM OR LEASE NAME, WELL NO.

20C

9. API WELL NO.

30-039-26221

10. FIELD AND POOL OR WILDCAT

Blanco Mesa Verde

11. SEC., T., R., M., OR BLK.  
AND SURVEY OR AREA

J Sec. 14, T31N, R6W

12. COUNTY OR PARISH

Rio Arriba

13. STATE

NM

17. NO. OF ACRES ASSIGNED TO THIS WELL

320

20. ROTARY OR CABLE TOOLS

Rotary

22. APPROX. DATE WORK WILL START\*

October 1, 1999

## 23. PROPOSED CASING AND CEMENTING PROGRAM

SIZE OF HOLE	GRADE, SIZE OF CASING	WEIGHT PER FOOT	SETTING DEPTH	QUANTITY OF CEMENT
12-1/4"	9-5/8"	36#	250'	176 cuft. Of class "RMS" with 2% CaCl
8-3/4"	7"	20#	3529	819 cuft 65/35 & 242 cuft RMS
6-1/4"	4-1/2"	10.5#	3429'-6014'	170 cuft. 65/35 & 228 cuft "HS"

Williams Production Company proposes to drill a vertical well to develop the Mesa Verde formation at the above described location in accordance with the attached drilling and surface use plans.

This location has been archaeologically surveyed by Moore Anthropological Research. Copies of their report have been submitted directly to your office.

This APD also is serving as an application to obtain BLM road and pipeline right-of-ways. This well will be accessed from the Rosa Road. The Rosa Road continues south for 14 miles where it joins the Sims Mesa Highway.

IN ABOVE SPACE DESCRIBE PROPOSED PROGRAM: If proposal is to deepen or plug back, give data on present productive zone and proposed new productive zone. If proposal is to drill or deepen directionally, give pertinent data on subsurface locations and measured and true vertical depths. Give blowout preventer program, if any.

24. SIGNED Paul C. Thompson TITLE Paul Thompson, Agent DATE 9/3/99

(This space for Federal or State office use)

PERMIT NO.

APPROVAL DATE

OCT 22 1999

Application approval does not warrant or certify that the applicant holds legal or equitable title to those rights in the subject lease which would entitle the applicant to conduct operations thereon.

CONDITIONS OF APPROVAL, IF ANY:

APPROVED BY

TITLE

DATE

\*See Instructions On Reverse Side

Title 18 U.S.C. Section 1001, makes it a crime for any person knowingly and willfully to make to any department or agency of the United States any false, fictitious or fraudulent statements or representations as to any matter within its jurisdiction.

District I  
PO Box 1980, Hobbs, NM 88241-1980

District II  
PO Drawer 00, Artesia, NM 88211-0719

District III  
1000 Rio Brazos Rd., Aztec, NM 87410

District IV  
PO Box 2088, Santa Fe, NM 87504-2088

State of New Mexico  
Energy, Minerals & Natural Resources Department

OIL CONSERVATION DIVISION  
PO Box 2088  
Santa Fe, NM 87504-2088

Form C-102  
Revised February 21, 1994  
Instructions on back  
Submit to Appropriate District Office  
State Lease - 4 Copies  
Fee Lease - 3 Copies

00577-3 11 7:50 ☐ AMENDED REPORT

### WELL LOCATION AND ACREAGE DEDICATION PLAT

*API Number 30-039-26221		*Pool Code 72319	*Pool Name Blanco Mesa Verde
*Property Code 17033	*Property Name ROSA UNIT		*Well Number 20C
*OGRID No. 120782	*Operator Name WILLIAMS PRODUCTION COMPANY		*Elevation 6232'

#### 10 Surface Location

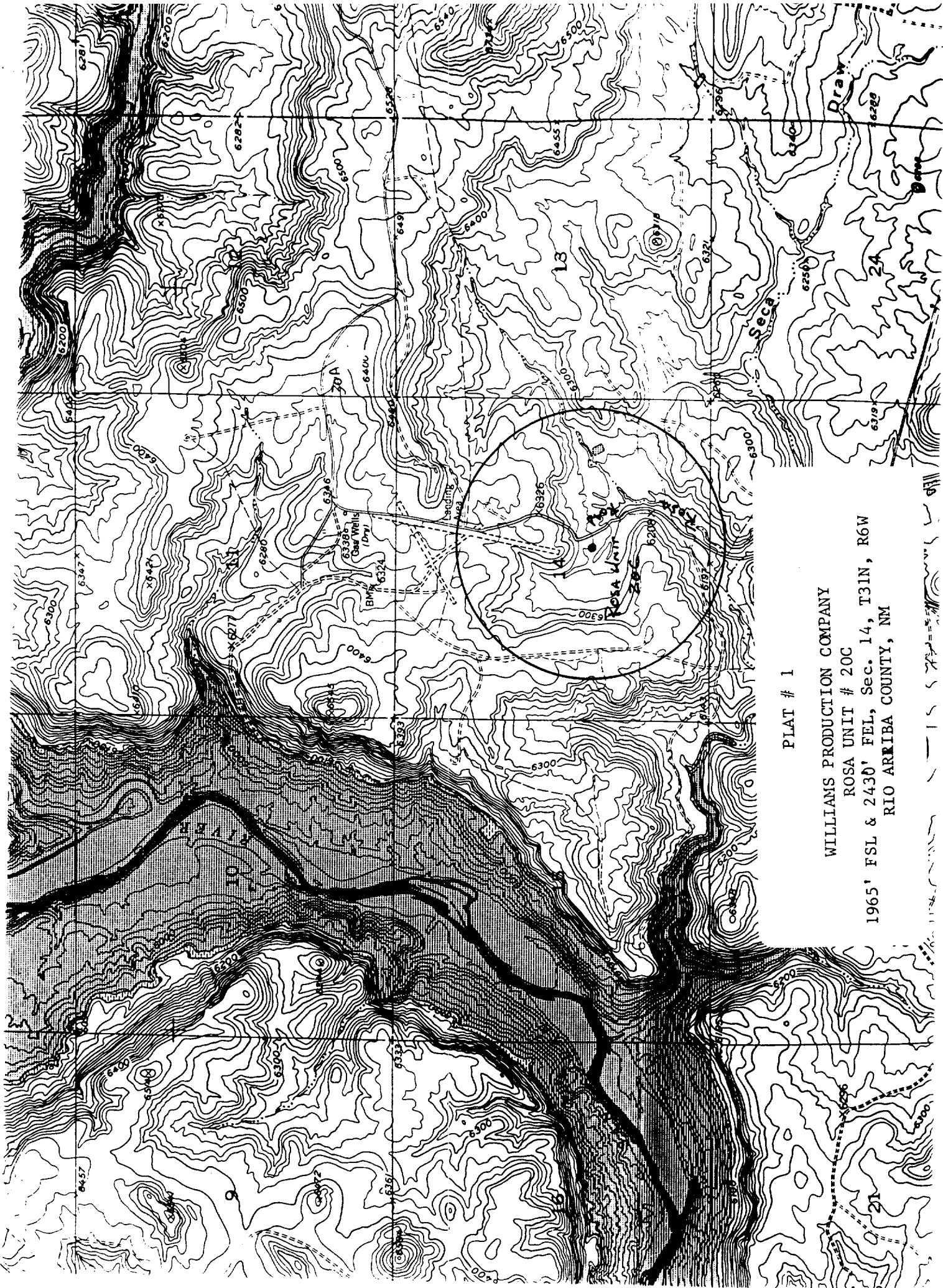
UL or lot no. J	Section 14	Township 31N	Range 6W	Lot Idn	Feet from the 1965	North/South line SOUTH	Feet from the 2430	East/West line EAST	County RIO ARriba
--------------------	---------------	-----------------	-------------	---------	-----------------------	---------------------------	-----------------------	------------------------	----------------------

#### 11 Bottom Hole Location If Different From Surface

UL or lot no.	Section	Township	Range	Lot Idn	Feet from the	North/South line	Feet from the	East/West line	County
12 Dedicated Acres 320		13 Joint or Infill Y		14 Consolidation Code U		15 Order No.			

NO ALLOWABLE WILL BE ASSIGNED TO THIS COMPLETION UNTIL ALL INTERESTS HAVE BEEN CONSOLIDATED  
OR A NON-STANDARD UNIT HAS BEEN APPROVED BY THE DIVISION

15	5287.92'		* 20C	17 OPERATOR CERTIFICATION I hereby certify that the information contained herein is true and complete to the best of my knowledge and belief.	
	5280.00'			Signature Paul C. Thompson	
	5280.00'			Printed Name Paul C. Thompson	
5280.00'		14		Agent	
5280.00'		2430'		Title 8-20-99	
5280.00'		1965'		Date	
5280.00'		20C		18 SURVEYOR CERTIFICATION I hereby certify that the well location shown on this plat was plotted from field notes of actual surveys made by me or under my supervision, and that the same is true and correct to the best of my belief.	
5280.00'		20C		JULY 23, 1999	
5280.00'		20C		Date of Survey	
5280.00'		20C		Signature and Seal of Surveyor	
5280.00'		20C		NEALE C. EDWARDS NEW MEXICO 6857	
5280.00'		20C		Certificate 6857	



PLAT # 1

WILLIAMS PRODUCTION COMPANY

ROSA UNIT # 20C

1965' FSL & 2430' FEL, Sec. 14, T31N, R6W  
RIO ARriba COUNTY, NM