

UNITED STATES
DEPARTMENT OF THE INTERIOR
BUREAU OF LAND MANAGEMENT

ROW/APD

FORM APPROVED
Budget Bureau No. 1004-0136
Expires: February 28, 1995

APPLICATION FOR PERMIT TO DRILL OR DEEPEN

1a. Type of Work

DRILL ☒DEEPEN ☐

b. Type of Well

Oil Well ☐Gas Well ☒Other ☐Single Well ☒Multiple Zone ☐

2. Name of Operator

Williams Exploration & Production

R.R. Co.

3. Address and Telephone No

P.O. Box 3102, MS 37-2, Tulsa, OK. 74101

4. Location of Well (Footages)

At Surface

790' FSL 1450' FEL (SWSE)

At proposed prod. zone

Same

14. Distance in Miles and Directions from Nearest Town or Post Office

20.8 miles East Navajo Dam Post Office (straight line)

15. Distance from Proposed Location to Nearest

Property or Lease Line, Ft

790'

16. No. of Acres in Lease

2507.3 acres

17. No. of Acres Assigned to This Well

S/320 acres

18. Distance from Proposed Location to Nearest Well Drilling, Completed, or Applied for, on this Lease, FT

1646'

19. Proposed Depth

6199'

20. Rotary or Cable Tools

Rotary

21. Elevations (Show whether DF, RT, GR, etc)

6412' GR

This action is subject to technical and procedural review pursuant to 43 CFR 3165.3 and appeal pursuant to 43 CFR 3155.4.

22. Approximate Date Work will Start

April 1, 2000

PROPOSED CASING AND CEMENTING PROGRAM

SIZE OF HOLE	SIZE & GRADE OF CASING	WEIGHT PER FOOT	SETTING DEPTH	QUANTITY OF CEMENT
12-1/4"	9-5/8"	36#	250'	130 sx-176 cu ft Type III
8-3/4"	7"	20#	3779'	430 sx-902 cu ft Lite 65/35
6-1/4"	4-1/2"	10.5#	3679' - 6199'	70 sx-150-cuft 110 sx-238cuft

Williams Exploration & Production proposes to drill a vertical well to develop the Mesa Verde Formation at the above described location, in accordance with the attached Operation and Surface Use plans. The location has been surveyed for Cultural Resources by Moore Anthropological Research. Copies have been submitted to your office for review.

This APD also is serving as an application to obtain BLM road and pipeline rights-of-way. This well will be accessed by constructing 1476-feet of new access road which ties into an existing road (see plat #4). The proposed 1646' pipeline would tie into the Williams Exploration & Production Gathering System (see the attached Plat Map # 4).

ALL WORKING OPERATIONS AUTHORIZED ARE
SUBJECT TO COMPLIANCE WITH ATTACHED
"GENERAL REQUIREMENTS"

IN ABOVE SPACE DESCRIBE PROPOSED PROGRAM: If proposal to deepen, give present productive zone and proposed new productive zone.

COPIES: BLM+4, WELL FILE+1

24. I hereby certify that the foregoing is true and correct

Signed

Steve Nelson

Title Agent

Date December 14, 1999

(This space for Federal or State office use)

Permit No

Approval Date

Application approval does not warrant or certify that applicant holds legal or equitable title to those rights in the subject lease which would entitle the applicant to conduct operations thereon.

Conditions of approval, if any:

APPROVED BY

TITLE

DATE

MAR 6 2000

District I
PO Box 1980, Hobbs, NM 88241-1980
District II
PO Drawer DD, Artesia, NM 88211-0719
District III
1000 Rio Brazos Rd., Aztec, NM 87410
District IV
PO Box 2088, Santa Fe, NM 87504-2088

State of New Mexico
Energy, Minerals & Natural Resources Department

Form C-102
Revised February 21, 1994
Instructions on back
Submit to Appropriate District Office
State Lease - 4 Copies
Fee Lease - 3 Copies

OIL CONSERVATION DIVISION
PO Box 2088
Santa Fe, NM 87504-2088

RECEIVED
MAR 2 1996
2:00 PM

☐ AMENDED REPORT

WELL LOCATION AND ACREAGE DEDICATION PLAT

1 APT Number 30-039-26272		2 Pool Code 72319		3 Pool Name Blanco Mesa Verde	
4 Property Code 008480		5 Property Name 17033 Rosa Unit		6 Well Number 17A	
7 OGRID No. 120782		8 Operator Name Williams Production Co.		9 Elevation 6412'	

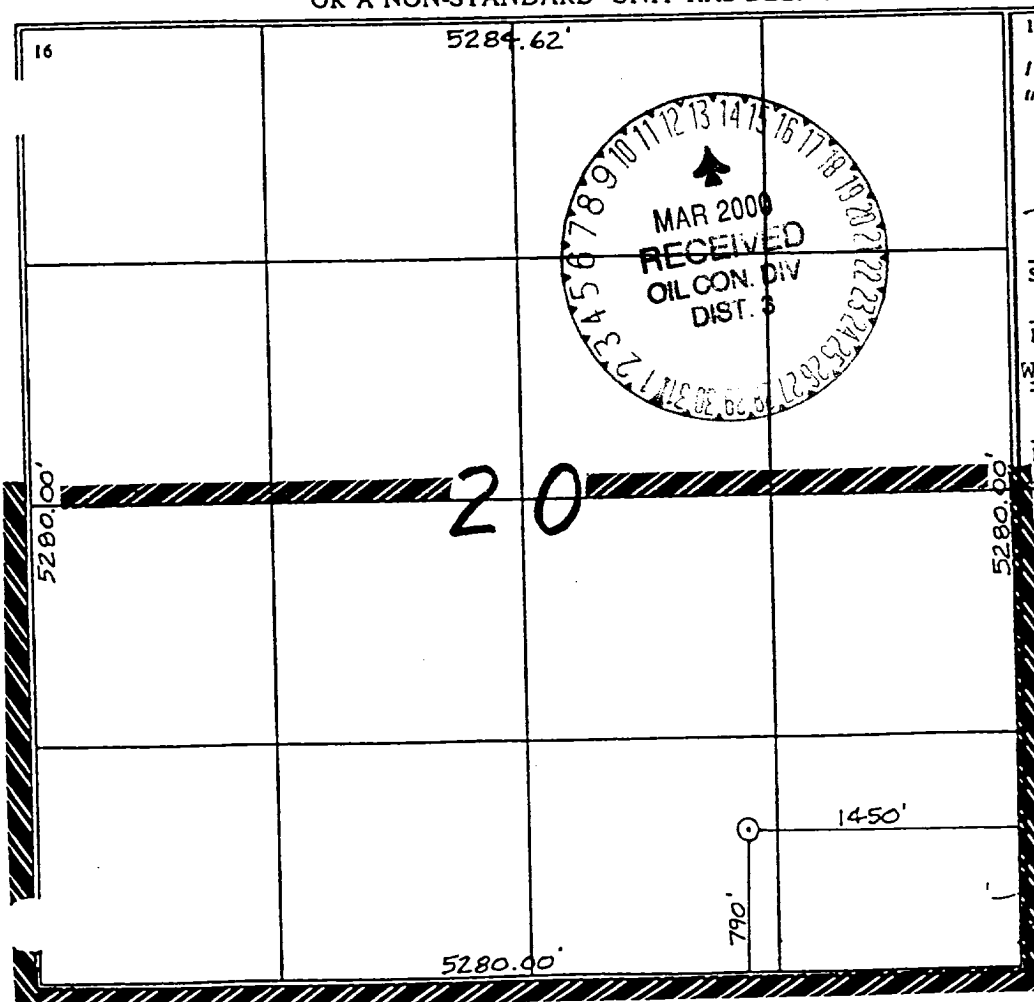
10 Surface Location

UL or lot no.	Section	Township	Range	Lot Ida	Feet from the	North/South line	Feet from the	East/West line	County
0	20	31N	5 W		790	South	1450	East	R.A.

11 Bottom Hole Location If Different From Surface

UL or lot no.	Section	Township	Range	Lot Ida	Feet from the	North/South line	Feet from the	East/West line	County
12 Dedicated Acres 320		13 Joint or Infill N		14 Consolidation Code U		15 Order No.			

NO ALLOWABLE WILL BE ASSIGNED TO THIS COMPLETION UNTIL ALL INTERESTS HAVE BEEN CONSOLIDATED
OR A NON-STANDARD UNIT HAS BEEN APPROVED BY THE DIVISION



17 OPERATOR CERTIFICATION

I hereby certify that the information contained herein is true and complete to the best of my knowledge and belief

Paul C. Thompson
Signature
Paul C. Thompson, Agent
Printed Name President
Walsh Engr. & Prod. Corp.
Title
2/26/96
Date

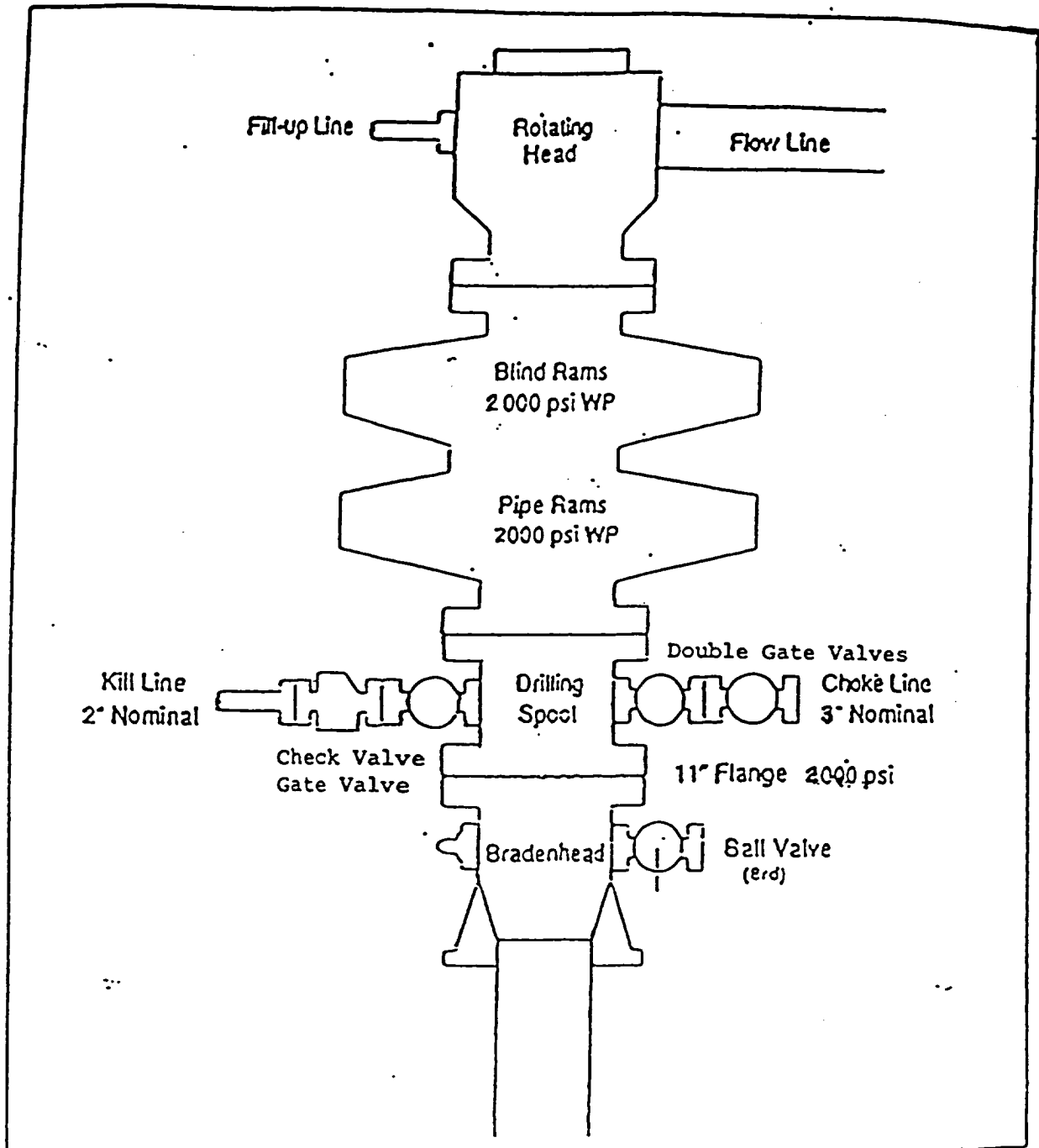
18 SURVEYOR CERTIFICATION

I hereby certify that the well location shown on this plat was plotted from field notes of actual surveys made by me or under my supervision, and that the same is true and correct to the best of my belief.

1-30-96
Date of Survey
Signature and Seal of Professional Surveyor
NEALE C. EDWARDS
NEW MEXICO
8837
6857
Certificate Number

EXHIBIT 1

BOP STACK ARRANGEMENT



All ram type preventers and related equipment will be hydraulically tested at nipple-up and after any use under pressure to 1500 psi. The blind rams will be hydraulically activated and checked for operational readiness each time pipe is pulled out of the hole. All checks of the BOP stack and equipment will be noted on the daily drilling report. The BOP equipment will include a kelly cock with handle, floor safety valve with change overs for each tool joint in the string, and choke manifold all rated to 2000 psi.

Williams Exploration & Production
Rosa Unit Well # 17A
Wells in one-mile radius & Existing Roads
Plat Map # 1

