

ROSA UNIT #14A
BLANCO MESAVERDE

Spud date : 4/17/00

Completed: 6/6/00

Location:

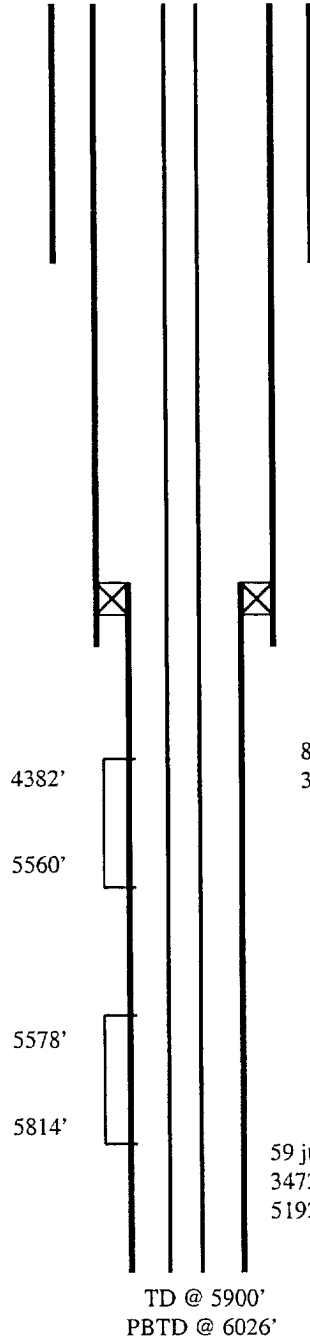
1025' FSL and 850' FEL
SE/4 SE/4 Sec 23(P), T31N R06W
Rio Arriba, New Mexico
Elevation: 6273' GR

| <u>Top</u> | <u>Depth</u> |
|-----------------|--------------|
| Pictured Cliffs | 3132' |
| Lewis | 3402' |
| CliffHouse | 5316' |
| Menefee | 5406' |
| Point Lookout | 5577' |
| Mancos | 5912' |

STIMULATION

CliffHouse/Menefee: 4382' - 5560'
(32, 0.38" holes) Frac with 80,000#
20/40 sand in 1914 bbbs slick water.

Point Lookout: 5578' - 5814' (33,
0.38" holes) Frac with 80,000# 20/40
sand in 1935 bbbs slick water.



6 jts 9-5/8", 36#, K-55, ST&C csg. Landed @ 296'
Cemented with 150 sx cmt

TIW liner hanger.
TOL @ 3472'

87 jts 7", 23#, K-55, LT&C csg. Landed on mandrel @
3603'. Float @ 3560'. Cemented with 580 sx cmt.

186 jts 2-3/8", 4.7#, J-55, EUE, 8rd tbg w/
1/2" mule shoe on bottom and SN 1 jt up.
Landed @ 5792'

59 jts 4-1/2", 10.5#, K-55 ST&C csg. Landed @
3472' - 6026'. Latch collar @ 6005' & marker jt @
5192'. Cemented with 280 sx cmt

| Hole Size | Casing | Cement | Volume | Top Of CMT |
|-----------|---------------|--------|-------------|------------|
| 12-1/4" | 9-5/8", 36# | 150 sx | 209 cu. Ft. | surface |
| 8-3/4" | 7", 23# | 580 sx | 1078 cu ft. | surface |
| 6-1/4" | 4-1/2", 10.5# | 280 sx | 408 cu. Ft. | 3472' |