

UNITED STATES
DEPARTMENT OF THE INTERIOR
BUREAU OF LAND MANAGEMENT

ROW/APD

FORM APPROVED
Budget Bureau No. 1004-0136
Expires: February 28, 1995

APPLICATION FOR PERMIT TO DRILL OR DEEPEN

1a. Type of Work

DRILL ☒DEEPEN ☐

b. Type of Well

Oil Well ☐ Gas Well ☒ Other ☐Single Well ☒ Multiple Zone ☐

2. Name of Operator

Williams Exploration & Production

3. Address and Telephone No

P.O. Box 3102, MS 37-2, Tulsa, OK. 74101

4. Location of Well (Footages)

At Surface

1680' FNL 790' FWL (SENW)

At proposed prod. zone

Same

14. Distance in Miles and Directions from Nearest Town or Post Office

19.4 miles SE Navajo Dam Post Office (straight line)

15. Distance from Proposed Location to Nearest

Property or Lease Line, Ft 790'

16. No. of Acres in Lease

2507.3 acres

17. No. of Acres Assigned to This Well

232.69 acres N/2

18. Distance from Proposed Location to Nearest Well Drilling, Completed, or Applied for, on this Lease, FT

1700'

19. Proposed Depth

6097'

20. Rotary or Cable Tools

Rotary

21. Elevations (Show whether DF, RT, GR, etc)

6350' GR

22. Approximate Date Work will Start

April 1, 2000

PROPOSED CASING AND CEMENTING PROGRAM

SIZE OF HOLE	SIZE & GRADE OF CASING	WEIGHT PER FOOT	SETTING DEPTH	QUANTITY OF CEMENT
12-1/4"	9-5/8"	36#	250'	130 sx-176 cu ft Type III
8-3/4"	7"	20#	3672'	410 sx-854 cu ft Lite 180sx-250 Cuft-Type III
6-1/4"	4-1/2"	10.5#	3572' - 6097'	70 sx-150-cuft 110 sx-240cuft Lite HS 65/35

Williams Exploration & Production proposes to drill a vertical well to develop the Mesa Verde Formation at the above described location, in accordance with the attached Operation and Surface Use plans. The location has been surveyed for Cultural Resources by Moore Anthropological Research. The report has been submitted to your office for review.

This APD also is serving as an application to obtain BLM road and pipeline rights-of-way. This well will be accessed by constructing 1631-feet of new access road which ties into an existing road (see plat #4). The proposed 1631-foot long pipeline would tie into the Williams Gathering System (see the attached Plat Map # 4).

This action is subject to technical and procedural review pursuant to 43 CFR 3165.3 and appeal pursuant to 43 CFR 3165.4.

DRILLING OPERATIONS AUTHORIZED ARE
SUBJECT TO COMPLIANCE WITH ATTACHED
"GENERAL REQUIREMENTS"

If ABOVE SPACE DOES NOT ACCOMMODATE PROPOSED DEEPEN, give present productive zone and proposed new productive zone.

Signed

Steve Nelson

Title Agent

COPIES: BLM+4, WELL FILE+1

Date December 17, 1999

(This space for Federal or State office use)

Permit No.

Approval Date

Application approval does not warrant or certify that applicant holds legal or equitable title to those rights in the subject lease which would entitle the applicant to conduct operations thereon.

Conditions of approval, if any:

WAYNE TOWNSEND

APPROVED

APPROVED BY:

TITLE

DATE

3-10-00

District I
PO Box 1980, Hobbs, NM 88241-1980

State of New Mexico
Energy, Minerals & Natural Resources Department

Form C-102
Revised February 21, 1994
Instructions on back
Submit to Appropriate District Office
State Lease - 4 Copies
Fee Lease - 3 Copies

District II
PO Box 100, Artesia, NM 88211-0719

OIL CONSERVATION DIVISION

PO Box 2088
Santa Fe, NM 87504-2088

District III
G. Brazos Rd., Aztec, NM 87410

☐ AMENDED REPORT

District IV
PO Box 1000, Santa Fe, NM 87504-2088

WELL LOCATION AND ACREAGE DEDICATION PLAT

API Number 30-039-26282		Pool Code 72319	Pool Name Blanco Mtd.
Property Code 17033	Property Name ROSA UNIT		Well Number 166A
Well No. 120782	Operator Name WILLIAMS PRODUCTION COMPANY		Elevation 6350

10 Surface Location

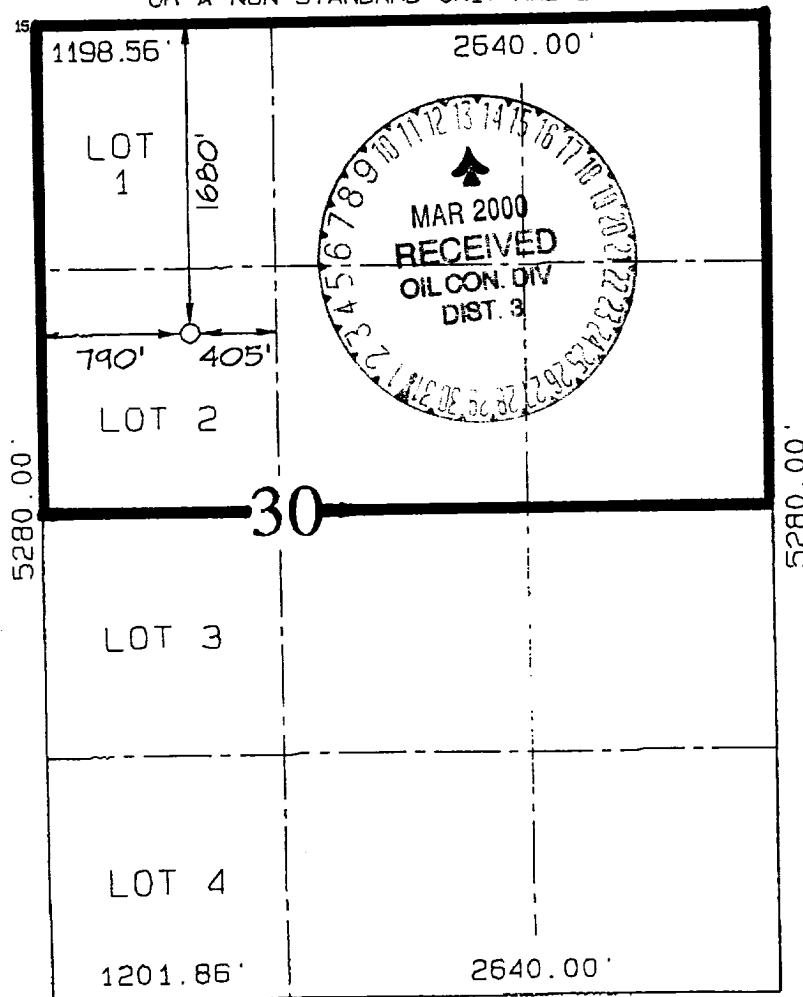
Section	Township	Range	Lot Idn	Feet from the	North/South line	Feet from the	East/West line	County
30	31N	5W		1680	NORTH	790	WEST	RIO ARriba

11 Bottom Hole Location If Different From Surface

Section	Township	Range	Lot Idn	Feet from the	North/South line	Feet from the	East/West line	County

12 Hole Series	13 Joint or Infill	14 Consolidation Code	15 Under No.

ALLOWABLE WILL BE ASSIGNED TO THIS COMPLETION UNTIL ALL INTERESTS HAVE BEEN CONSOLIDATED
OR A NON-STANDARD UNIT HAS BEEN APPROVED BY THE DIVISION



17 OPERATOR CERTIFICATION

I hereby certify that the information contained herein is true and complete to the best of my knowledge and belief.

Steve Nelson
Signature

Steve Nelson
Printed Name

Agent, Nelson Consulting, Inc.
Title

December 17, 1999
Date

18 SURVEYOR CERTIFICATION

I hereby certify that the well location shown on this plat was plotted from field notes of actual surveys made by me or under my supervision, and that the same is true and correct to the best of my belief.

OCTOBER 23, 1999

Date of Survey

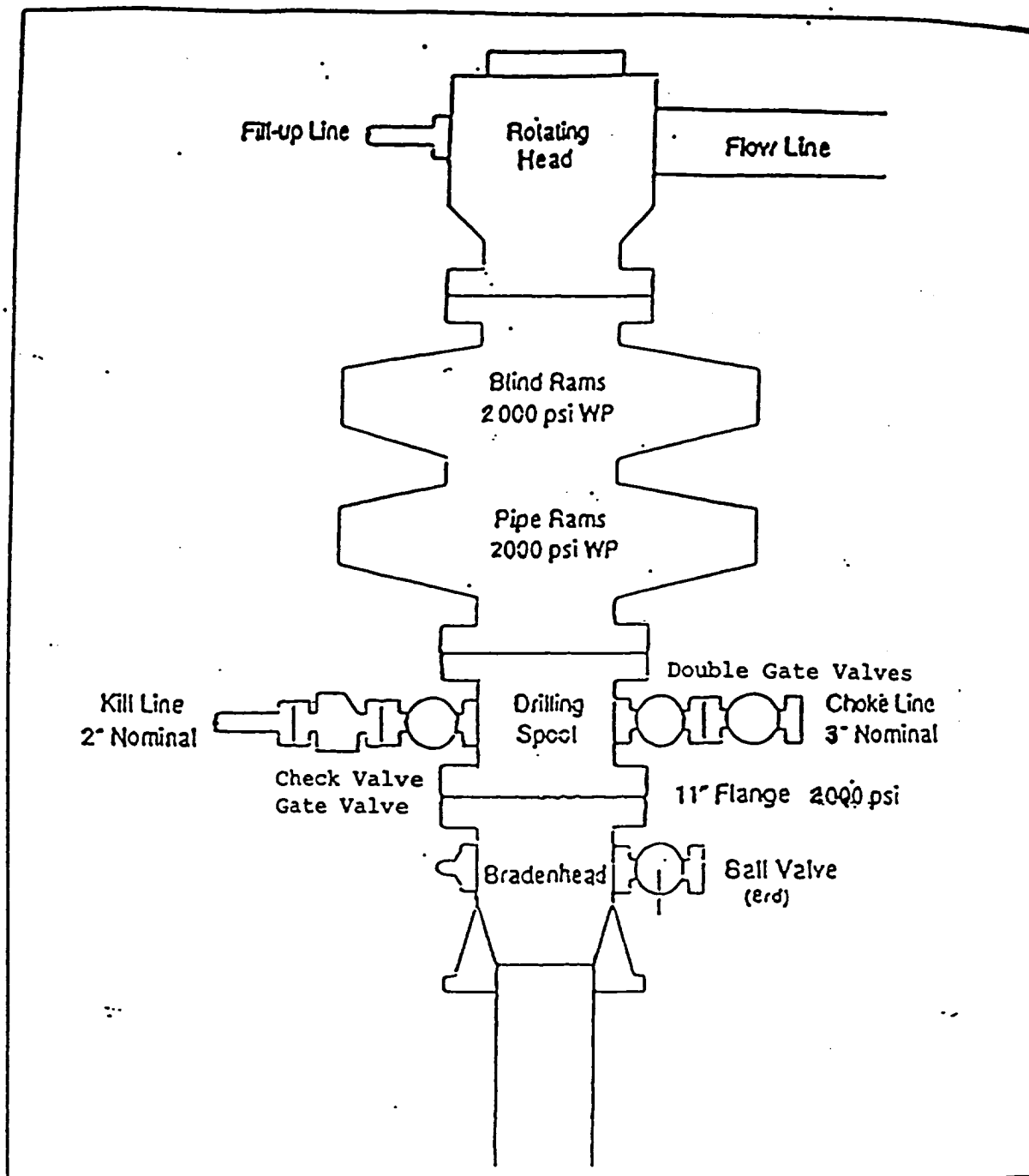
Signature and Seal of Surveyor



Certificate No. 6857

EXHIBIT 1

BOP STACK ARRANGEMENT



All ram type preventers and related equipment will be hydraulically tested at nipple-up and after any use under pressure to 1500 psi. The blind rams will be hydraulically activated and checked for operational readiness each time pipe is pulled out of the hole. All checks of the BOP stack and equipment will be noted on the daily drilling report. The BOP equipment will include a kelly cock with handle, floor safety valve with change overs for each tool joint in the string, and choke manifold all rated to 2000 psi.

Williams Exploration & Production
Bancos Mesa & Gomez Ranch USGS Quads
Well Location

