

UNITED STATES  
DEPARTMENT OF THE INTERIOR  
BUREAU OF LAND MANAGEMENT

ROW/APD

FORM APPROVED  
Budget Bureau No. 1004-0136  
Expires: February 28, 1995

APPLICATION FOR PERMIT TO DRILL OR DEEPEN

1a. Type of Work

DRILL ☒

DEEPEN ☐

b. Type of Well

Oil Well ☐ Gas Well ☒ Other ☐

Single Well ☒ Multiple Zone ☐

2. Name of Operator

Williams Production Company

3. Address and Telephone No

P.O. Box 3102, MS 37-2, Tulsa, OK. 74101

4. Location of Well (Footages)

At Surface

1025' FSL 790' FEL, SWSE

proposed prod. zone

5. Lease Designation and Serial No  
SF-078767

6. If Indian, Allottee or Tribe Name

7. If Unit or CA, Agreement Designation

Rosa Unit

8. Well Name and No.

RU-# 163A

9. API Well No.

30-039-26336

10. Field and Pool, or Exploratory Area

Blanco - MV

11. Sec., T., R., M., or BLK.  
and Survey or Area

Section 24, T31N, R6W

14. Distance in Miles and Directions from Nearest Town or Post Office

19.8 miles east Navajo Dam Post Office (straight line)

12. County or Parish

Rio Arriba

13. State

NM

15. Distance from Proposed Location to Nearest Property or Lease Line, Ft

790'

16. No. of Acres in Lease

2518.04 acres

17. No. of Acres Assigned to This Well

223.92 acres E/2

18. Distance from Proposed Location to Nearest Well Drilling, Completed,

or Applied for, on this Lease, FT

1800'

19. Proposed Depth

6064' KB

20. Rotary or Cable Tools

Rotary

21. Elevations (Show whether DF, RT, GR, etc)

6064' GR

22. Approximate Date Work will Start

April 1, 2000

PROPOSED CASING AND CEMENTING PROGRAM

SIZE OF HOLE	SIZE & GRADE OF CASING	WEIGHT PER FOOT	SETTING DEPTH	QUANTITY OF CEMENT
12-1/4"	9-5/8"	36#	250'	130 sx-176 cu ft Type III
8-3/4"	7"	20#	3639'	405 sx-847 cu ft Lite 180 sx-247 Cu ft-Type III
6-1/4"	4-1/2"	10.5#	3539' - 6064'	70 sx-150-cuft 110 sx-239cuft Prem. Lite HS 65/35

Williams Exploration & Production proposes to drill a vertical well to develop the Mesa Verde Formation at the above described location, in accordance with the attached Operation and Surface Use plans. The location has been surveyed for Cultural Resources by Moore Anthropological Research of Aztec, NM. The report has been submitted to your office for review.

This APD also is serving as an application to obtain BLM road and pipeline rights-of-way. This well will not require a new access road (see plats #3). The access road will turn off an existing road onto the location. The proposed 174-foot long pipeline would tie into the Williams Gathering System on the Rosa Unit Well #219 (see the attached Plat Map # 4).

This well is subject to technical and procedural review pursuant to 43 CFR 3165.3 and appeal pursuant to 43 CFR 3165.4.

DRILLING OPERATIONS AUTHORIZED ARE  
SUBJECT TO COMPLIANCE WITH ATTACHED  
"GENERAL REQUIREMENTS"

14. Above information is true and correct to the best of my knowledge. If proposal to deepen, give present productive zone and proposed new productive zone.

Signed

*Steve Nelson*

Steve Nelson

Title Agent

COPIES: BLM+4, WELL FILE+1  
Date January 20, 2000

(This space for Federal or State office use)

Permit No

Application approval does not warrant or certify that applicant holds legal or equitable title to those rights in the subject lease which would entitle the applicant to conduct operations thereon.

Conditions of approval, if any:

APPROVED BY:

*/s/ Charlie Beecham*

TITLE

Team Lead, Petroleum Management

DATE

MAR 20 2000

Dist. 1  
PO Box 1960, Hobbs, NM 88241-1960

State of New Mexico  
Energy, Minerals & Natural Resources Department

Form C-102  
Revised February 21, 1994

Dist. 1  
PO Box 1960, Artesia, NM 88211-0719

## OIL CONSERVATION DIVISION

Instructions on back  
Submit to Appropriate District Office  
State Lease - 4 Copies  
Fee Lease - 3 Copies

Dist. 1  
PO Box 1960, Grados Rd., Aztec, NM 87410

PO Box 2088  
Santa Fe, NM 87504-2088

Dist. 1  
PO Box 1960, Santa Fe, NM 87504-2088

☐ AMENDED REPORT

## WELL LOCATION AND ACREAGE DEDICATION PLAT

API Number <b>30-039-26336</b>		Pool Code <b>72319</b>	Pool Name <b>Blanco - MV</b>
Lease Code <b>17033</b>	Property Name <b>ROSA UNIT</b>		Well Number <b>163A</b>
Lease No. <b>120782</b>	Operator Name <b>WILLIAMS PRODUCTION COMPANY</b>		Elevation <b>6317</b>

## 10 Surface Location

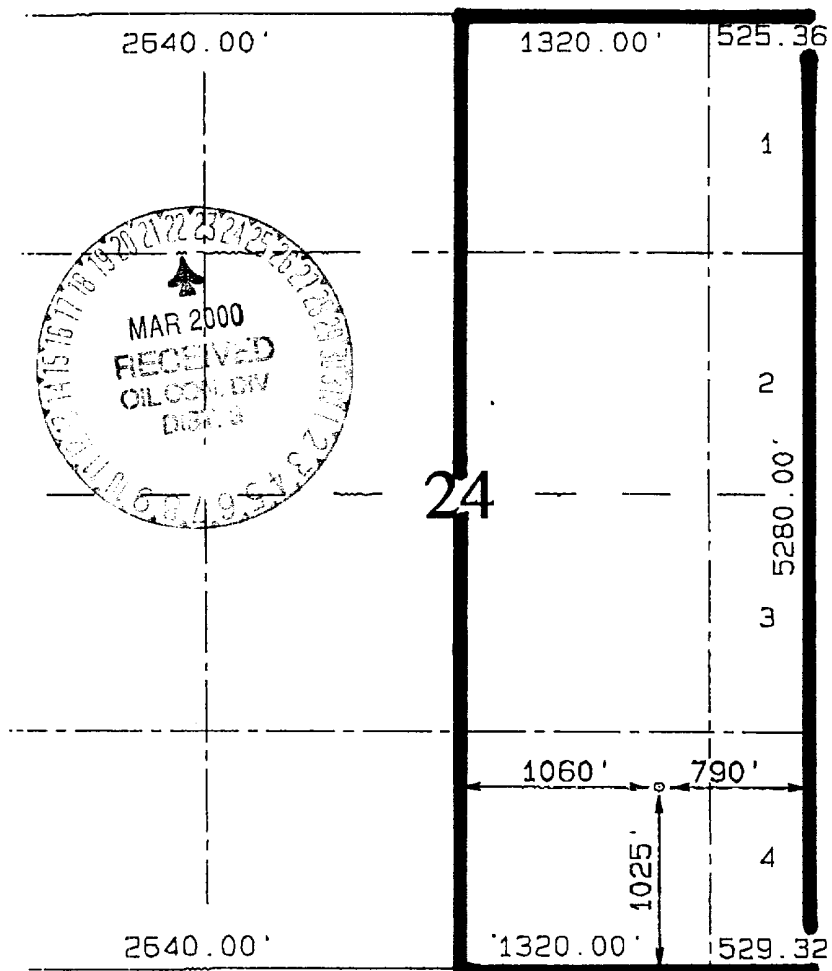
Section	Township	Range	Lot Idn	Feet from the	North/South line	Feet from the	East/West line	County
<b>24</b>	<b>31N</b>	<b>6W</b>		<b>1025</b>	<b>SOUTH</b>	<b>790</b>	<b>EAST</b>	<b>RIO ARriba</b>

## 11 Bottom Hole Location If Different From Surface

Section	Township	Range	Lot Idn	Feet from the	North/South line	Feet from the	East/West line	County

Order No.	Joint or Infill	Consolidation Code	Order No.
<b>E/2 223.92</b>	<b>I</b>	<b>U</b>	

ROWABLE WILL BE ASSIGNED TO THIS COMPLETION UNTIL ALL INTERESTS HAVE BEEN CONSOLIDATED  
OR A NON-STANDARD UNIT HAS BEEN APPROVED BY THE DIVISION



## 17 OPERATOR CERTIFICATION

I hereby certify that the information contained herein is true and complete to the best of my knowledge and belief.

*Steve Nelson*  
Signature

**Steve Nelson**  
Printed Name

**Agent, Nelson Consulting**  
Title

**January 20, 2000**  
Date

## 18 SURVEYOR CERTIFICATION

I hereby certify that the well location shown on this plat was plotted from field notes of actual surveys made by me or under my supervision and that the same is true and correct to the best of my belief.

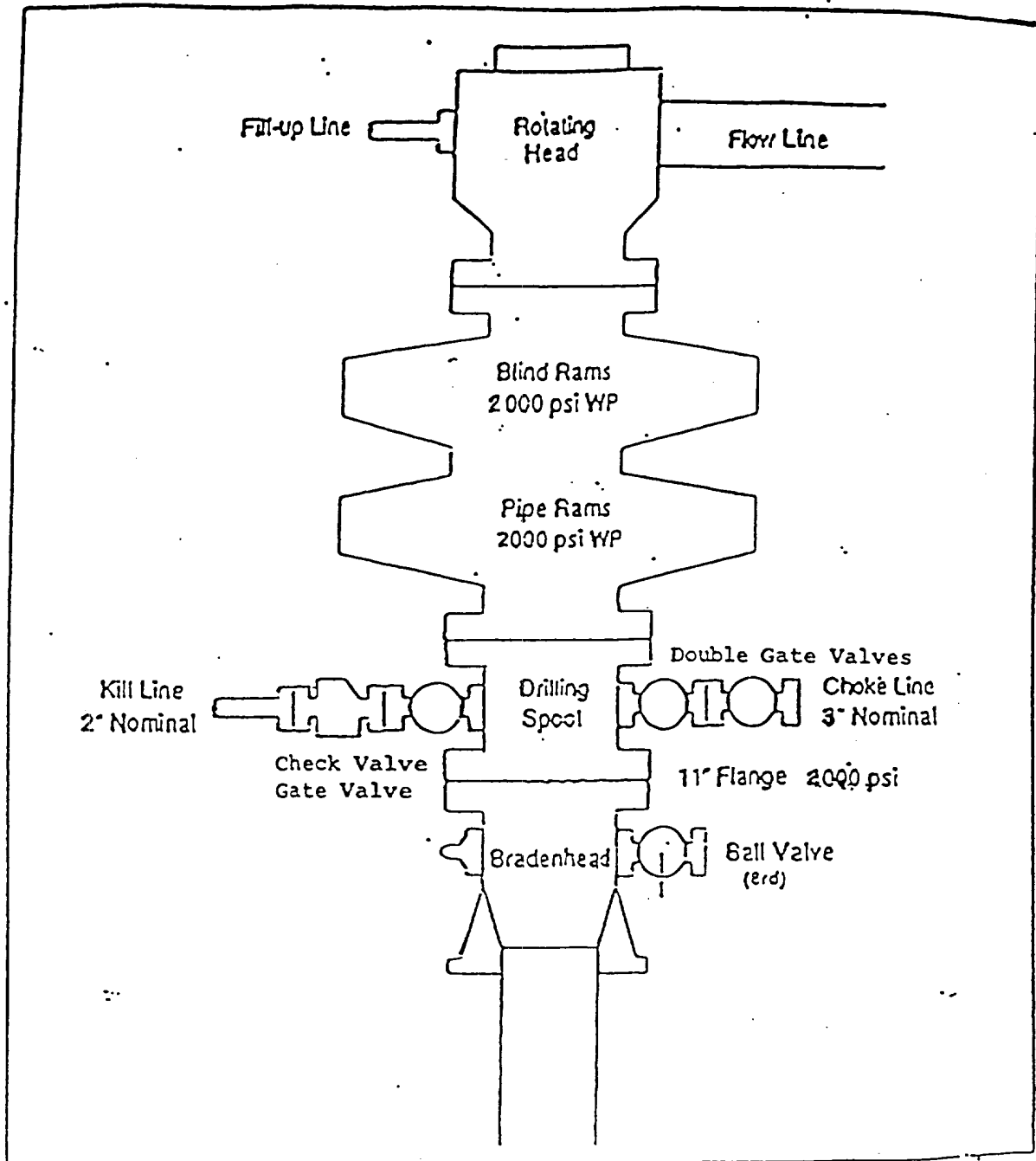
**MARCH 26, 1998**  
Date of Survey

Signature and Seal of Professional Surveyor

**NEALE C. EDWARDS**  
**NEW MEXICO**  
**6857**  
Professional Surveyor  
Certification Number

# EXHIBIT 1

## BOP STACK ARRANGEMENT



All ram type preventers and related equipment will be hydraulically tested at nipple-up and after any use under pressure to 1500 psi. The blind rams will be hydraulically activated and checked for operational readiness each time pipe is pulled out of the hole. All checks of the BOP stack and equipment will be noted on the daily drilling report. The BOP equipment will include a kelly cock with handle, floor safety valve with change overs for each tool joint in the string, and choke manifold all rated to 2000 psi.

## WILLIAMS PRODUCTION COMPANY ROSA UNIT #163A

1025' FSL & 790' FEL, SECTION 24, T31N, R6W, N.M.P.M.  
RIO ARriba COUNTY, NEW MEXICO

