



ENERGY SERVICES
One Williams Center
P.O. Box 3102
Tulsa, Oklahoma 74101
918/573-4592

April 25, 2000

Ms. Lori Wrotenbery
New Mexico Oil Conservation Division
2040 S. Pacheco
Santa Fe, NM 87505

Re: Non-Standard Gas Proration Unit
Rosa Unit #163A (API# 30-039-26336)
1025' FSL, 790' FEL
Section 24(O)-T31N-R6W
Rio Arriba County, NM
Blanco Mesa Verde



Dear Ms. Wrotenbery,

According to rule 605.B(2)(a) Williams Production Company hereby requests administrative approval for a non-standard gas proration unit in the Blanco Mesa Verde pool for the referenced well. The proposed spacing unit is east half of Section 24, T31N, R6W, which is 223.92 acres due to a variation in the legal subdivision of the U.S. Public Land Surveys.

As the Unit Operator of the Rosa Unit, Williams Production is the only offset operator. Attached is a plat indicating the well location and proposed spacing unit.

Thank you for your consideration and approval of this application. If you have any questions, please do not hesitate to call me at (918) 573-6254.

Sincerely,

Ms. Tracy Ross

Ms. Tracy Ross
Production Analyst

CC: BLM Farmington NM
NMOCD Aztec NM

AUG-05-99 THU 09:54 AM

E. SURVEYS, INC.

3 2654

P.02

Form C-102

Revised February 21, 1994

Instructions on back.

Submit to Appropriate District Office

State Lease - 4 Copies

Fee Lease - 3 Copies

State of New Mexico

Energy, Minerals & Natural Resources Department

OIL CONSERVATION DIVISION

PO Box 2088

Santa Fe, NM 87504-2088

20 JUN 26 PM 1:54 AMENDED REPORT

Dist. 100, Hobbs, NM 88241-1980

Dist. 100, Artesia, NM 88211-0719

Dist. 100, Grados Rd., Aztec, NM 87410

Dist. 100, Santa Fe, NM 87504-2088

WELL LOCATION AND ACREAGE DEDICATION PLAT

API Number		Pool Code	Pool Name	
		72319	Blanco - MV	
Property Code	Property Name		Well Number	
17033	ROSA UNIT		163A	
Well No.	Operator Name		Elevation	
120782	WILLIAMS PRODUCTION COMPANY		6317	

10 Surface Location

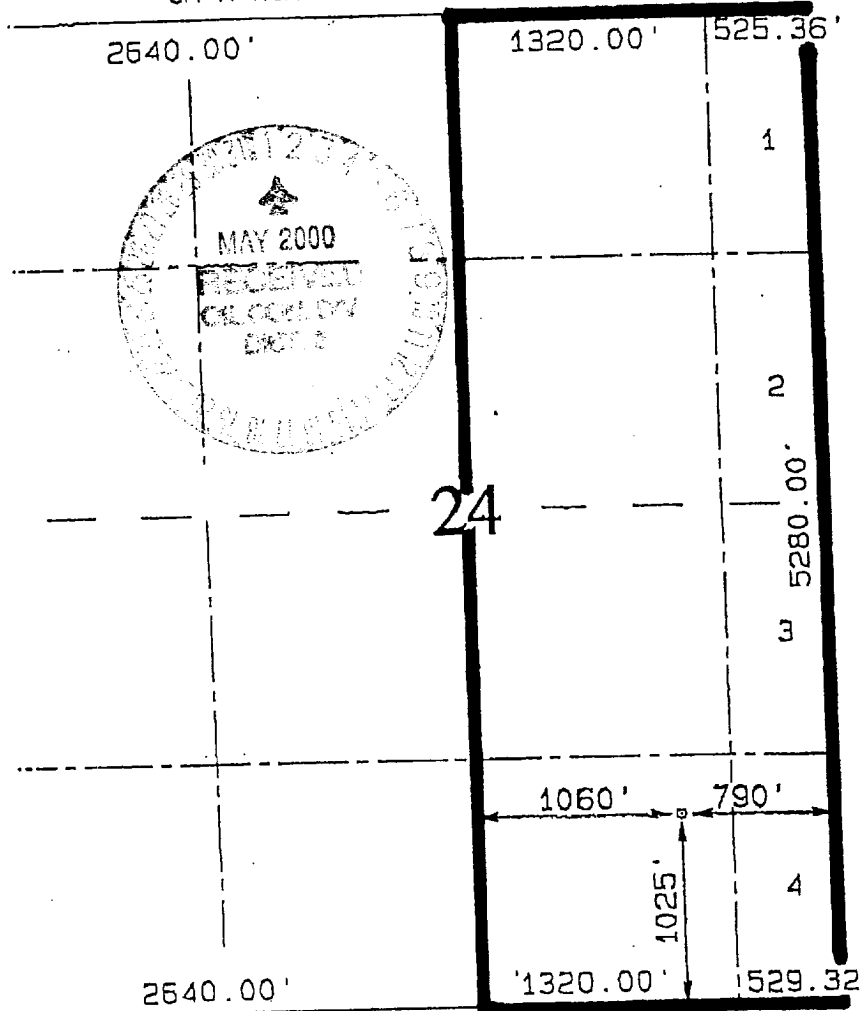
Section	Township	Range	Lot 10n	Feet from the	North/South line	Feet from the	East/West line	County
24	31N	6W		1025	SOUTH	790	EAST	RIO ARriba

11 Bottom Hole Location If Different From Surface

Section	Township	Range	Lot 10n	Feet from the	North/South line	Feet from the	East/West line	County

Order No.	Consolidation Code	Joint or Infill	Order No.
E/2 223.92	U	I	

12 UNWELLABLE WILL BE ASSIGNED TO THIS COMPLETION UNTIL ALL INTERESTS HAVE BEEN CONSOLIDATED
OR A NON-STANDARD UNIT HAS BEEN APPROVED BY THE DIVISION



17 OPERATOR CERTIFICATION

I hereby certify that the information contained herein is true and complete to the best of my knowledge and belief.

Steve Nelson
Signature

Steve Nelson
Printed Name

Agent, Nelson Consulting
Title

January 20, 2000
Date

18 SURVEYOR CERTIFICATION

I hereby certify that the well location shown on this plat was plotted from field notes of actual surveys made by me or under my supervision and that the same is true and correct to the best of my belief.

MARCH 26, 1998
Date of Survey

Signature and Seal of Professional Surveyor

Neale C. Edwards
NEALE C. EDWARDS
NEW MEXICO
6857
Certificated Number
PROFESSIONAL SURVEYOR