

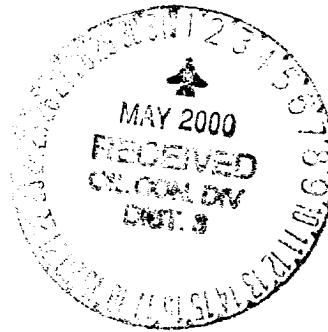


ENERGY SERVICES  
One Williams Center  
P.O. Box 3102  
Tulsa, Oklahoma 74101  
918/573-4592

April 25, 2000

Ms. Lori Wrotenbery  
New Mexico Oil Conservation Division  
2040 S. Pacheco  
Santa Fe, NM 87505

Re: Non-Standard Gas Proration Unit  
Rosa Unit #183A (API# 30-039-26386)  
1585' FNL, 790' FWL  
Section 19(F)-T31N-R5W  
Rio Arriba County, NM  
Blanco Mesa Verde



Dear Ms. Wrotenbery,

According to rule 605.B(2)(a) Williams Production Company hereby requests administrative approval for a non-standard gas proration unit in the Blanco Mesa Verde pool for the referenced well. The proposed spacing unit is north half of Section 19, T31N, R5W, which is 232.01 acres due to a variation in the legal subdivision of the U.S. Public Land Surveys.

As the Unit Operator of the Rosa Unit, Williams Production is the only offset operator. Attached is a plat indicating the well location and proposed spacing unit.

Thank you for your consideration and approval of this application. If you have any questions, please do not hesitate to call me at (918) 573-6254.

Sincerely,

Ms. Tracy Ross  
Production Analyst

CC: BLM Farmington NM  
NMOCD Aztec NM

District I  
PO Box 1980, Hobbs, NM 88241-1980

District II  
PO Drawer 00, Artesia, NM 88211-0719

District III  
1000 Rio Brazos Rd., Aztec, NM 87410

District IV  
PO Box 2088, Santa Fe, NM 87504-2088

State of New Mexico  
Energy, Minerals & Natural Resources Department

OIL CONSERVATION DIVISION  
PO Box 2088  
Santa Fe, NM 87504-2088

Form C-102  
Revised February 21, 1994  
Instructions on back  
Submit to Appropriate District Office  
State Lease - 4 Copies  
Fee Lease - 3 Copies

☐ AMENDED REPORT

# WELL LOCATION AND ACREAGE DEDICATION PLAT

*API Number <b>30-039-26386</b>		*Pool Code <b>72319</b>	*Pool Name <b>Blanco - MV</b>
*Property Code <b>17033</b>	*Property Name <b>ROSA UNIT</b>		*Well Number <b>183A</b>
*OGAPID No. <b>120782</b>	*Operator Name <b>WILLIAMS PRODUCTION COMPANY</b>		*Elevation <b>6299'</b>

## 10 Surface Location

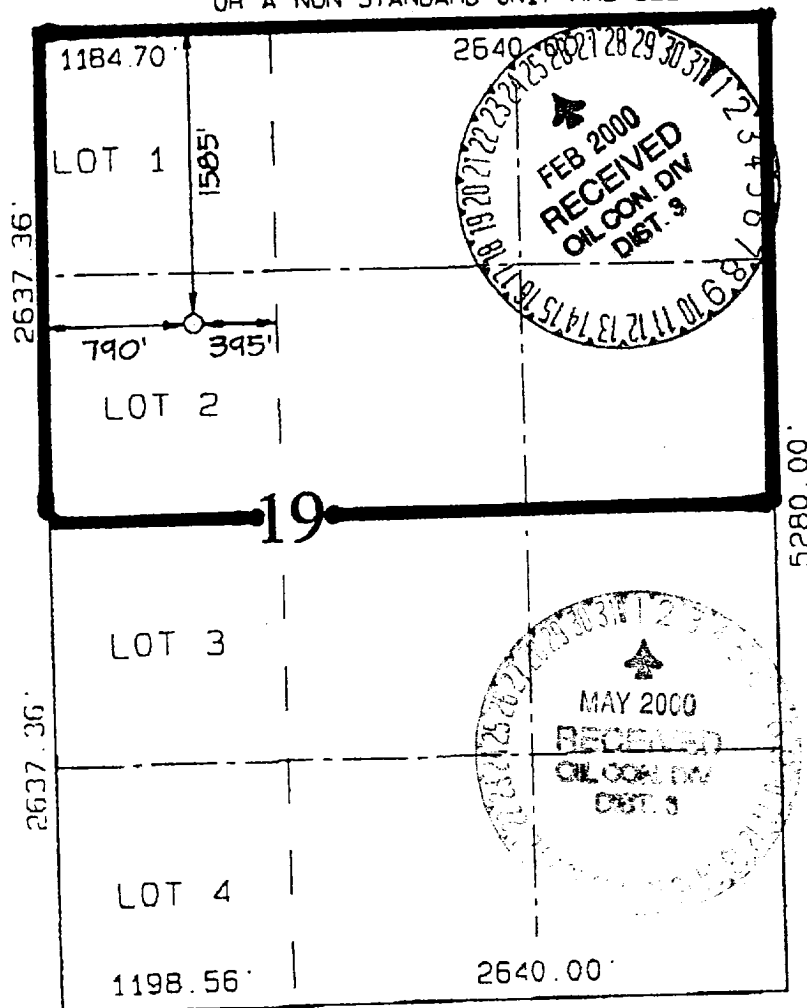
UL or lot no.	Section	Township	Range	Lot 10	Feet from the	North/South line	Feet from the	East/West line	County
<b>F</b>	<b>19</b>	<b>31N</b>	<b>5W</b>		<b>1585</b>	<b>NORTH</b>	<b>790</b>	<b>WEST</b>	<b>RIO ARriba</b>

## 11 Bottom Hole Location If Different From Surface

UL or lot no.	Section	Township	Range	Lot 10	Feet from the	North/South line	Feet from the	East/West line	County

* Dedicated Acres	* Joint or Infill	* Consolidation Code	* Order No.
<b>232.01 N/2</b>	<b>I</b>	<b>U</b>	

NO ALLOWABLE WILL BE ASSIGNED TO THIS COMPLETION UNTIL ALL INTERESTS HAVE BEEN CONSOLIDATED OR A NON-STANDARD UNIT HAS BEEN APPROVED BY THE DIVISION



## 17 OPERATOR CERTIFICATION

I hereby certify that the information contained herein is true and complete to the best of my knowledge and belief.

*Steve Nelson*  
Signature

Steve Nelson  
Printed Name

Agent, Nelson Consulting  
Title

February 22, 2000  
Date

## 18 SURVEYOR CERTIFICATION

I hereby certify that the well location shown on this plat was plotted from field notes of actual surveys made by me or under my supervision, and that the same is true and correct to the best of my belief.

AUGUST 14, 1999  
Date of Survey

Signature and Seal of Surveyor

*Neale G. Edwards*  
NEALE G. EDWARDS  
NEW MEXICO  
6857  
Certificate Number 6857