

UNITED STATES
DEPARTMENT OF THE INTERIOR
BUREAU OF LAND MANAGEMENT

ROW/APD

FORM APPROVED
Budget Bureau No. 1004-0136
Expires: February 28, 1995

APPLICATION FOR PERMIT TO DRILL OR DEEPEN

1a. Type of Work

DRILL ☒DEEPEN ☐

b. Type of Well

Oil Well ☐Gas Well ☒Other ☐Single Well ☒Multiple Zone ☐

2. Name of Operator

Williams Production Company

3. Address and Telephone No

P.O. Box 3102, MS 37-2, Tulsa, OK. 74101

4. Location of Well (Footages)

At Surface

930' FNL 1625' FEL, NWNE

proposed prod. zone

14. Distance in Miles and Directions from Nearest Town or Post Office

Approximately 21.8 miles northeast of Navajo Dam Post Office (straight line)

15. Distance from Proposed Location to Nearest

Property or Lease Line, Ft 930'

16. No. of Acres in Lease

2560.00 acres

17. No. of Acres Assigned to This Well

E 320.00 acres E/2

18. Distance from Proposed Location to Nearest Well Drilling, Completed,

or Applied for, on this Lease, FT 400'

19. Proposed Depth

6591' KB

20. Rotary or Cable Tools

Rotary

21. Elevations (Show whether DF, RT, GR, etc)

6784' GR

22. Approximate Date Work will Start

April 1, 2000

PROPOSED CASING AND CEMENTING PROGRAM

SIZE OF HOLE	SIZE & GRADE OF CASING	WEIGHT PER FOOT	SETTING DEPTH	QUANTITY OF CEMENT
12-1/4"	9-5/8"	36#	250'	130 sx-176 cu ft Type III
8-3/4"	7"	20#	4176'	490 sx-1019 cu ft Lite 170 sx-236 Cu ft-Type III
6-1/4"	4-1/2"	10.5#	4076' - 6591'	80 sx-116-cuft 185 sx-271cuft Poz/Class H 50/50

Williams Exploration & Production proposes to drill a vertical well to develop the Blanco - Mesa Verde Formation at the above described location, in accordance with the attached Operation and Surface Use plans. The surface is under the jurisdiction of the U.S. Forest Service, Carson National Forest, Jicarilla Ranger District. Moore Anthropological Research of Aztec, NM, has surveyed the proposed location for Cultural Resources. The report has been submitted to your office for review.

This APD also is serving as an application to obtain an on-lease right-of-way for the road and pipeline. This well would utilize an existing gas field road and would not require a new access road (see Pipeline & Well Plats #3 and #4). The proposed 133-foot long pipeline would tie into a lateral on the Williams Gathering System (see the attached Pipeline Plat Map # 4).

APPROVED BY: Steve Nelson Title Agent

COPIES: BLM+4, WELL FILE+1
Date February 24, 2000

(This space for Federal or State office use)

Permit No.

Approval Date

Application approval does not warrant or certify that applicant holds legal or equitable title to those rights in the subject lease which would entitle the applicant to conduct operations thereon.

Conditions of approval, if any

APPROVED BY:

TITLE

DATE

APR - 6 2000

District I
PO Box 1980, Hobbs, NM 88241-1980

State of New Mexico
Energy, Minerals & Natural Resources Department

Form C-102
Revised February 21, 1994
Instructions on back
Submit to Appropriate District Office
State Lease - 4 Copies
Fee Lease - 3 Copies

District II
PO Drawer DD, Artesia, NM 88211-0719

OIL CONSERVATION DIVISION
PO Box 2088
Santa Fe, NM 87504-2088

District III
1000 Rio Brazos Rd., Aztec, NM 87410

District IV
PO Box 2088, Santa Fe, NM 87504-2088

☐ AMENDED REPORT

WELL LOCATION AND ACREAGE DEDICATION PLAT

*API Number 30-039-26388		*Pool Code 72319	*Pool Name Blanco - MV
*Property Code 17033	*Property Name ROSA UNIT		*Well Number 168A
*OGRID No. 120782	*Operator Name WILLIAMS PRODUCTION COMPANY		*Elevation 6785'

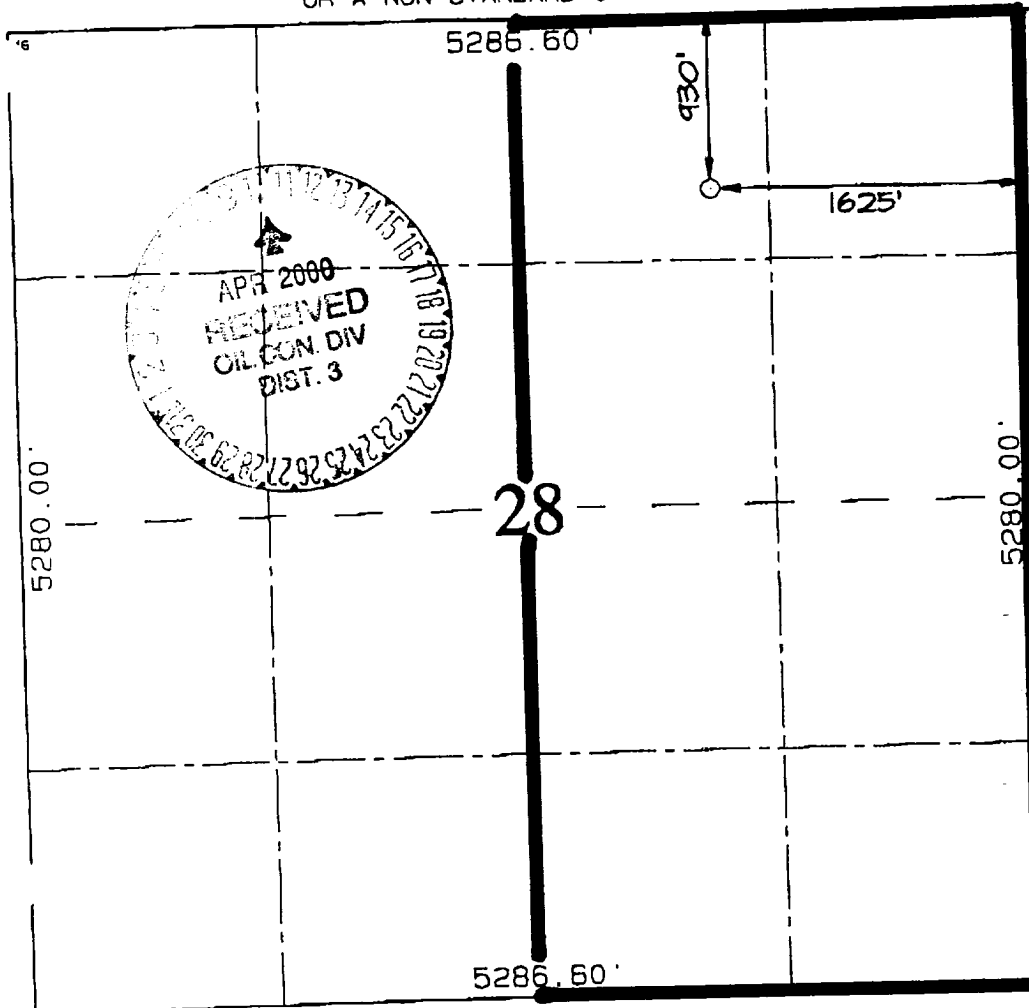
10 Surface Location

U. or lot no.	Section	Township	Range	Lot Idn	Feet from the	North/South line	Feet from the	East/West line	County
B	28	31N	5W		930	NORTH	1625	EAST	RIO ARriba

11 Bottom Hole Location If Different From Surface

U. or lot no.	Section	Township	Range	Lot Idn	Feet from the	North/South line	Feet from the	East/West line	County
*Dedicated Acres 320 E/2		*Joint or Infill I		*Consolidation Code U		*Order No.			

NO ALLOWABLE WILL BE ASSIGNED TO THIS COMPLETION UNTIL ALL INTERESTS HAVE BEEN CONSOLIDATED OR A NON-STANDARD UNIT HAS BEEN APPROVED BY THE DIVISION



17 OPERATOR CERTIFICATION

I hereby certify that the information contained herein is true and complete to the best of my knowledge and belief.

Steve Nelson
Signature
Steve Nelson
Printed Name
Agent, Nelson Consulting
Title
February 24, 2000
Date

18 SURVEYOR CERTIFICATION

I hereby certify that the well location shown on this plat was plotted from field notes of actual surveys made by me or under my supervision, and that the same is true and correct to the best of my belief.

FEBRUARY 10, 2000

Date of Survey
Signature and Seal of Professional Surveyor

NEALE C. EDWARDS
Signature and Seal of Professional Surveyor
NEW MEXICO
6857
Certificate Number 6857

WILLIAMS PRODUCTION COMPANY ROSA UNIT #168A

930' FNL & 1625' FEL, SECTION 28, T31N, R5W, N.M.P.M.
RIO ARRIBA COUNTY, NEW MEXICO

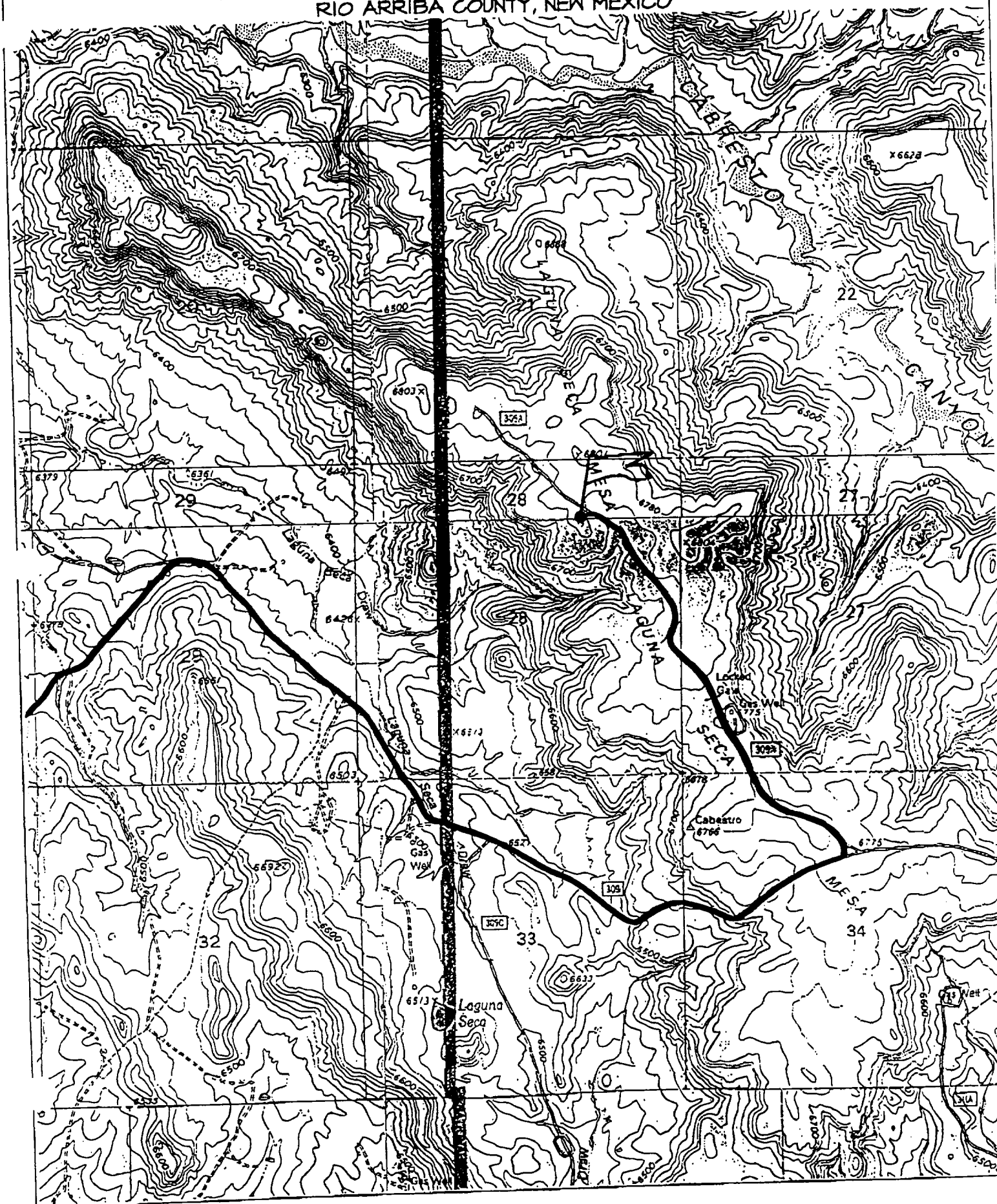
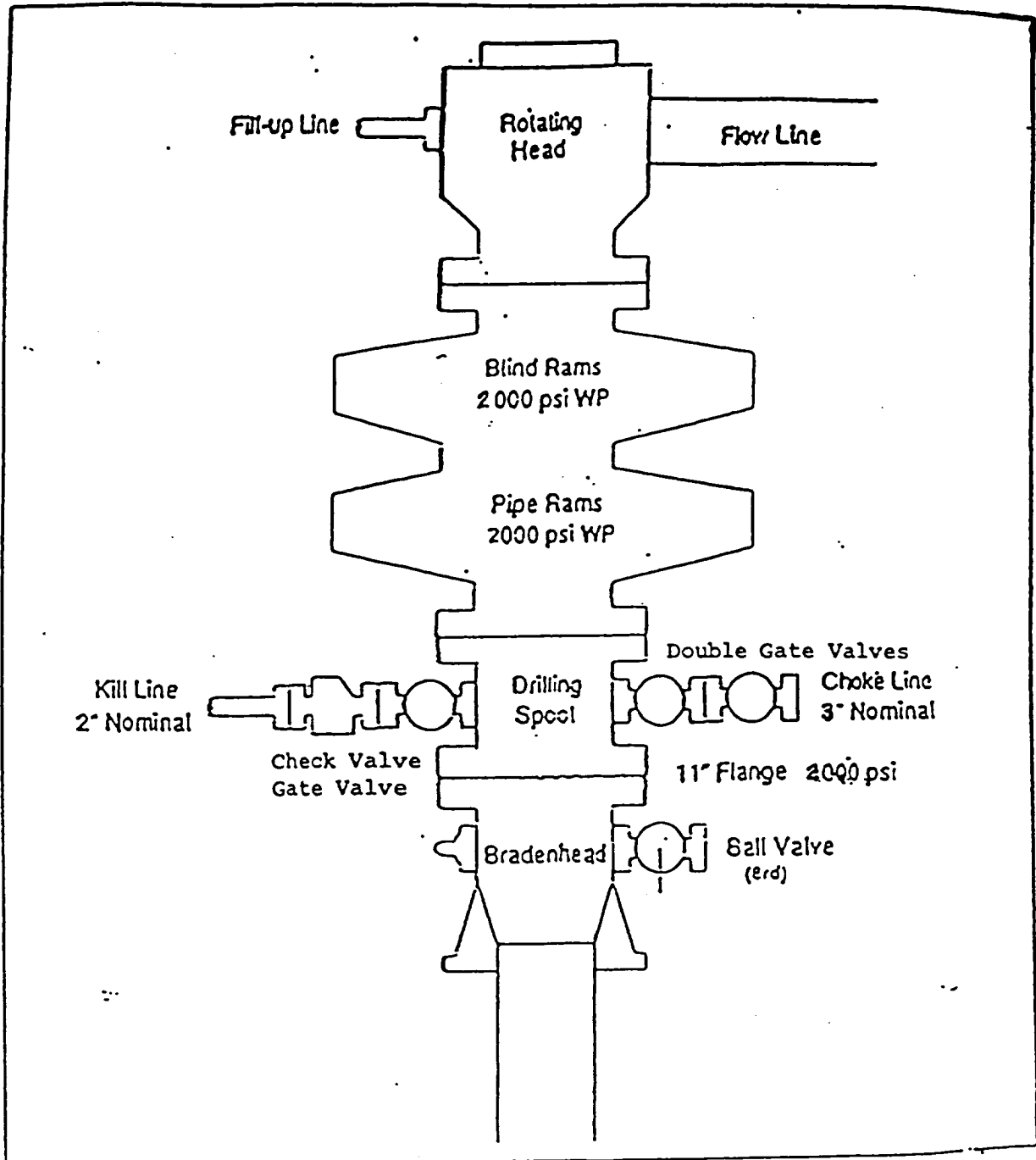


EXHIBIT 1

BOP STACK ARRANGEMENT



All ram type preventers and related equipment will be hydraulically tested at nipple-up and after any use under pressure to 1500 psi. The blind rams will be hydraulically activated and checked for operational readiness each time pipe is pulled out of the hole. All checks of the BOP stack and equipment will be noted on the daily drilling report. The BOP equipment will include a kelly cock with handle, floor safety valve with change overs for each tool joint in the string, and choke manifold all rated to 2000 psi.