

Submit 3 Copies To Appropriate District  
Office  
District I  
1625 N. French Dr., Hobbs, NM 87240  
District II  
811 South First, Artesia, NM 87210  
District III  
1600 Rio Brazos Rd., Aztec, NM 87410  
District IV  
2040 South Pacheco, Santa Fe, NM 87505

State of New Mexico  
Energy, Minerals and Natural Resources

Form C-103  
Revised March 25, 1999

OIL CONSERVATION DIVISION  
2040 South Pacheco  
Santa Fe, NM 87505

WELL API NO. 30-039-26432
5. Indicate Type of Lease STATE <input checked="" type="checkbox"/> FEE <input type="checkbox"/>
6. State Oil & Gas Lease No. E-346-26
7. Lease Name or Unit Agreement Name:  San Juan 31-6 Unit

SUNDRY NOTICES AND REPORTS ON WELLS (DO NOT USE THIS FORM FOR PROPOSALS TO DRILL OR TO DEEPEN OR PLUG BACK TO A DIFFERENT RESERVOIR. USE "APPLICATION FOR PERMIT" (FORM C-101) FOR SUCH PROPOSALS.)	
1. Type of Well: Oil Well <input type="checkbox"/> Gas Well <input checked="" type="checkbox"/> Other	
2. Name of Operator Phillips Petroleum Company 017654	
3. Address of Operator 5525 Highway 64, NBU 3004, Farmington, NM 87401	
4. Well Location Unit Letter 0 : 670' feet from the South line and 1975' feet from the East line Section 32 Township 31N Range 6W NMPM County Rio Arriba	
10. Elevation (Show whether DR, RKB, RT, GR, etc.) 6443'	

11. Check Appropriate Box to Indicate Nature of Notice, Report, or Other Data

NOTICE OF INTENTION TO:

PERFORM REMEDIAL WORK ☐ PLUG AND ABANDON ☐  
TEMPORARILY ABANDON ☐ CHANGE PLANS ☐  
PULL OR ALTER CASING ☐ MULTIPLE COMPLETION ☐

OTHER: Moved to standard location ☒

SUBSEQUENT REPORT OF:

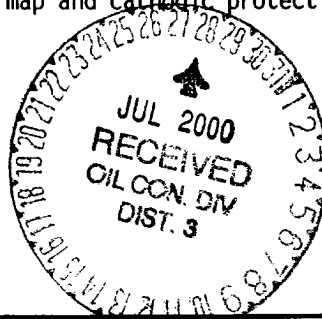
REMEDIAL WORK ☐ ALTERING CASING ☐  
COMMENCE DRILLING OPNS. ☐ PLUG AND ABANDONMENT ☐  
CASING TEST AND CEMENT JOB ☐

OTHER: ☐

12. Describe Proposed or Completed Operations (Clearly state all pertinent details, and give pertinent dates, including estimated date of starting any proposed work). SEE RULE 1103. For Multiple Completions: Attach wellbore diagram of proposed completion or recompletion.

The original APD for this well was approved 4/10/00 and we have now moved the location to a standard location.

Find attached the new C102s, cut and fill, map and cathodic protection information.



I hereby certify that the information above is true and complete to the best of my knowledge and belief.

SIGNATURE Patsy Clugston TITLE Sr. Regulatory/Proration Clerk DATE 7/25/00

Type or print name Patsy Clugston Telephone No. 505-599-3454

(This space for State use)

APPROVED BY [Signature] TITLE DEPUTY OIL & GAS INSPECTOR, DIST. 3 DATE 7-31-00  
Conditions of approval, if any:

District I  
141 Box 1980, Hobbs, NM 88241-1980  
District II  
111 South First, Artesia, NM 88210  
District III  
1000 Rio Brazos Rd., Aztec, NM 87410  
District IV  
2040 South Pacheco, Santa Fe, NM 87505

State of New Mexico  
Energy, Minerals & Natural Resources Department

OIL CONSERVATION DIVISION  
2040 South Pacheco  
Santa Fe, NM 87505

Form C-10  
Revised October 18, 1997  
Instructions on back  
Submit to Appropriate District Office  
State Lease - 4 Copies  
Fee Lease - 3 Copies

☐ AMENDED REPORT

WELL LOCATION AND ACREAGE DEDICATION PLAT

<sup>1</sup> API Number 30-039-26432	<sup>1</sup> Pool Code 72319	<sup>1</sup> Pool Name Blanco Mesaverde
<sup>4</sup> Property Code 009259	<sup>3</sup> Property Name SAN JUAN 31-6 UNIT	<sup>6</sup> Well Number 46M
<sup>7</sup> OGRID No. 017654	<sup>1</sup> Operator Name PHILLIPS PETROLEUM COMPANY	<sup>8</sup> Elevation 6443'

<sup>10</sup> Surface Location

UL or lot no. 0	Section 32	Township 31N	Range 6W	Lot Idn	Feet from the 670'	North/South line SOUTH	Feet from the 1975'	East/West line EAST	County RIO ARriba
--------------------	---------------	-----------------	-------------	---------	-----------------------	---------------------------	------------------------	------------------------	----------------------

<sup>11</sup> Bottom Hole Location If Different From Surface

UL or lot no. 0	Section	Township	Range	Lot Idn	Feet from the	North/South line	Feet from the	East/West line	County
--------------------	---------	----------	-------	---------	---------------	------------------	---------------	----------------	--------

<sup>12</sup> Dedicated Acres 320 E/2	<sup>13</sup> Joint or Infill Y	<sup>14</sup> Consolidation Code U	<sup>15</sup> Order No.
--	------------------------------------	---------------------------------------	-------------------------

NO ALLOWABLE WILL BE ASSIGNED TO THIS COMPLETION UNTIL ALL INTERESTS HAVE BEEN CONSOLIDATED OR A NON-STANDARD UNIT HAS BEEN APPROVED BY THE DIVISION

16	N89°57'E	5293.20'	E-289-43	E-289-45	Section 32	E-346-26 200 acres	N00°01'E	5280.00'	5280.00'	N00°01'E	5280.00'	West	5280.00'	670'	1975'	17 OPERATOR CERTIFICATION I hereby certify that the information contained herein is true and complete to the best of my knowledge and belief  Signature <i>Patsy Clugston</i> Printed Name Patsy Clugston Title Sr. Regulatory/Proration Clerk Date 7-25-00

District I  
 PO Box 1980, Hobbs, NM 88241-1980  
 District II  
 111 South First, Artesia, NM 88210  
 District III  
 1000 Rio Brazos Rd., Aztec, NM 87410  
 District IV  
 2040 South Pacheco, Santa Fe, NM 87505

State of New Mexico  
 Energy, Minerals & Natural Resources Department

OIL CONSERVATION DIVISION  
 2040 South Pacheco  
 Santa Fe, NM 87505

Form C-10  
 Revised October 18, 199  
 Instructions on back  
 Submit to Appropriate District Office  
 State Lease - 4 Copies  
 Fee Lease - 3 Copies

☐ AMENDED REPORT

WELL LOCATION AND ACREAGE DEDICATION PLAT

<sup>1</sup> AIT Number 30-039-26432	<sup>1</sup> Pool Code 71599	<sup>1</sup> Pool Name Basin Dakota
<sup>4</sup> Property Code 009259	<sup>4</sup> Property Name SAN JUAN 31-6 UNIT	<sup>8</sup> Well Number 46M
<sup>7</sup> OGRID No. 017654	<sup>7</sup> Operator Name PHILLIPS PETROLEUM COMPANY	<sup>8</sup> Elevation 6443'

<sup>10</sup> Surface Location

UL or lot no.	Section	Township	Range	Lot Idn	Feet from the	North/South line	Feet from the	East/West line	County
0	32	31N	6W		670'	SOUTH	1975'	EAST	RIO ARRIBA

<sup>11</sup> Bottom Hole Location If Different From Surface

UL or lot no.	Section	Township	Range	Lot Idn	Feet from the	North/South line	Feet from the	East/West line	County
0									

<sup>12</sup> Dedicated Acres 320 E/2	<sup>13</sup> Joint or Infill Y	<sup>14</sup> Consolidation Code U	<sup>15</sup> Order No.
--	------------------------------------	---------------------------------------	-------------------------

NO ALLOWABLE WILL BE ASSIGNED TO THIS COMPLETION UNTIL ALL INTERESTS HAVE BEEN CONSOLIDATED OR A NON-STANDARD UNIT HAS BEEN APPROVED BY THE DIVISION

16 N89°57'E 5280.00' 5280.00' N00°01'E JUL 2000 RECEIVED OIL CON. DIV. DIST. 3	5293.20' E-289-43 E-289-45 Section 32 E-346-26 200 acres 1975' 670' 5280.00' West	<sup>17</sup> OPERATOR CERTIFICATION I hereby certify that the information contained herein is true and complete to the best of my knowledge and belief Signature Patsy Clugston Printed Name Sr. Regulatory/Proration Clerk Title 7-25-00 Date
		<sup>18</sup> SURVEYOR CERTIFICATION I hereby certify that the well location shown on this plat was plotted from field notes of actual surveys made by me or under my supervision, and that the same is true and correct to the best of my belief. Date of Survey 07/12/00 Signature and Seal of Professional Surveyer: HENRY P. BROADHURST NEW MEXICO REGISTERED PROFESSIONAL SURVEYOR 11375

# PHILLIPS PETROLEUM COMPANY

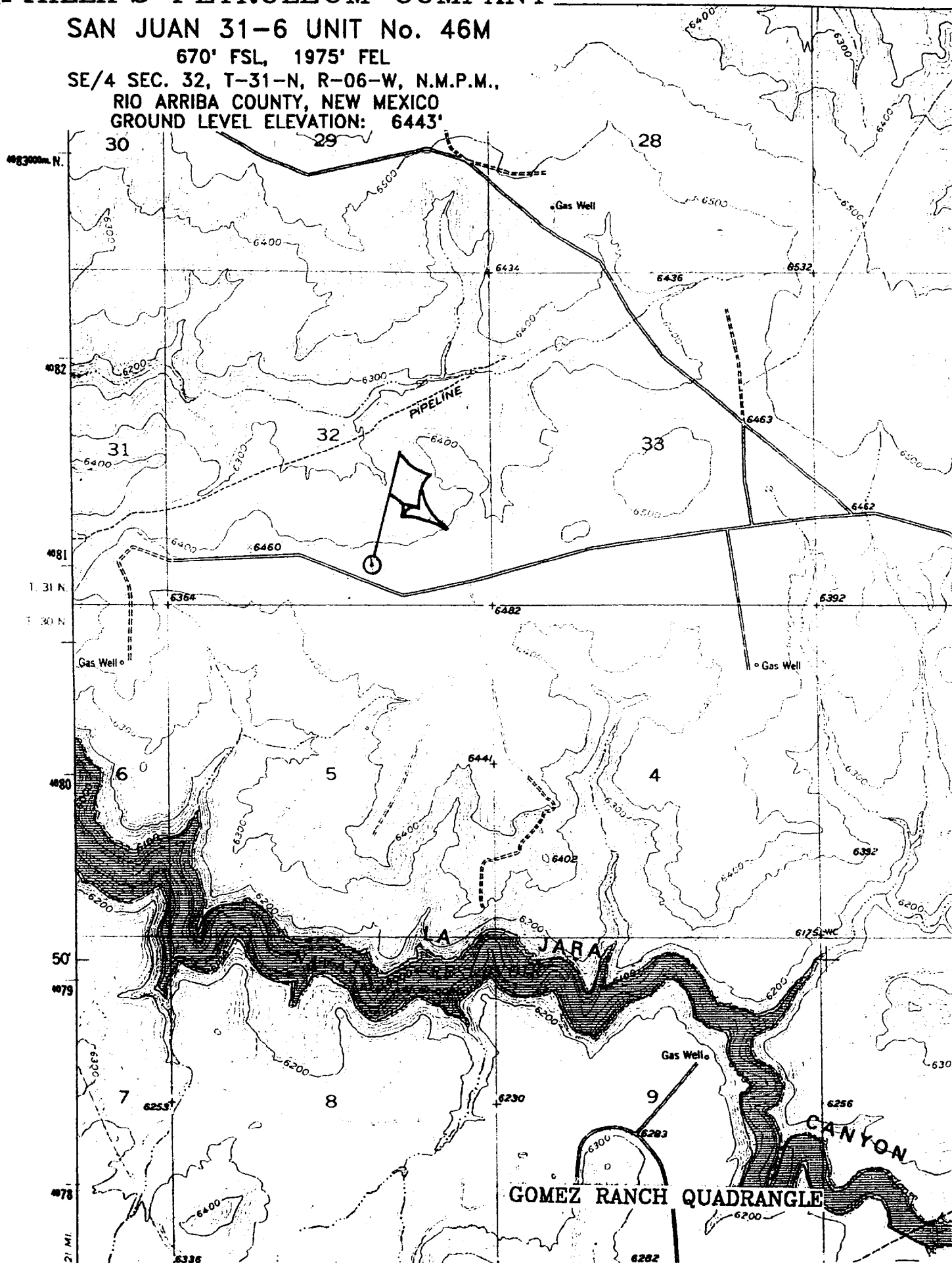
SAN JUAN 31-6 UNIT No. 46M

670' FSL, 1975' FEL

SE/4 SEC. 32, T-31-N, R-06-W, N.M.P.M.,

RIO ARRIBA COUNTY, NEW MEXICO

GROUND LEVEL ELEVATION: 6443'



**San Juan 31-6 Unit #46M  
E-346-26; Unit O, 670' FSL & 1975' FEL  
Section 32, T31N, R6W; Rio Arriba County, NM**

**Cathodic Protection**

Phillips proposes to drill a cathodic protection deep well groundbed for the subject well. Will drill a 6-7/8" hole to an anticipated minimum depth of 300' (maximum depth of 500'). Cement plugs will not be used unless more than one water zone is encountered. Prior drilling history for the area indicates only one zone to that depth. If more than one water zone is encountered, notification will be made and details of cement and casing will be provided.

All drilling activity will remain on existing well pad and a Farmington based company will be doing the drilling for Phillips.