

UNITED STATES
DEPARTMENT OF THE INTERIOR
BUREAU OF LAND MANAGEMENT

APPLICATION FOR PERMIT TO DRILL OR DEEPEN

1a. TYPE OF WORK

DRILL ☒

DEEPEN ☐

b. TYPE OF WELL

OIL
WELL ☐

GAS
WELL ☒

OTHER

SINGLE
ZONE ☒

MULTIPLE
ZONE ☐

2. NAME OF OPERATOR

VASTAR RESOURCES, INC.

3. ADDRESS AND TELEPHONE NO.

1816 E. MOJAVE, FARMINGTON NM 87401 (505) 599-4300

4. LOCATION OF WELL (Report location clearly and in accordance with any State requirements.)*

At surface

2405' FSL & 1880' FWL

At proposed prod. zone

SAME

14. DISTANCE IN MILES AND DIRECTION FROM NEAREST TOWN OR POST OFFICE*

39 MILES EAST-NORTHEAST OF BLOOMFIELD, NM

15. DISTANCE FROM PROPOSED*

LOCATION TO NEAREST
PROPERTY OR LEASE LINE, FT.
(Also to nearest drlg. unit line, if any)

634'

18. DISTANCE FROM PROPOSED LOCATION*
TO NEAREST WELL, DRILLING, COMPLETED,
OR APPLIED FOR, ON THIS LEASE, FT.

NONE

16. NO. OF ACRES IN LEASE

368.6

17. NO. OF ACRES ASSIGNED
TO THIS WELL

368.6

19. PROPOSED DEPTH

3230'

20. ROTARY OR CABLE TOOLS

ROTARY

21. ELEVATIONS (Show whether DF, RT, GR, etc.)

6321' GL

22. APPROX. DATE WORK WILL START*

JULY, 2000

23.

PROPOSED CASING AND CEMENTING PROGRAM

SIZE OF HOLE	GRADE SIZE OF CASING	WEIGHT PER FOOT	SETTING DEPTH	QUANTITY OF CEMENT
12-1/4"	8-5/8"	24#	400'	300 sx (354 cf) Circ. to Surf.
7-7/8"	5-1/2"	15.5#	3230'	900 sx (1730 cf) Circ. to Surf.

This program is subject to technical and
procedural review pursuant to 43 CFR 3185.3
and approval pursuant to 43 CFR 3185.4.

ALL INFORMATION CONTAINED HEREIN IS UNCLASSIFIED
DATE 10/1/01 BY 60322 UCBAW/STP



IN ABOVE SPACE DESCRIBE PROPOSED PROGRAM: If proposal is to deepen, give data on present productive zone and proposed new productive zone. If proposal is to drill or deepen directionally, give pertinent data on subsurface locations and measured and true vertical depths. Give blowout preventer program, if any.

24.

SIGNED

Charles W. Knight, Jr.
CHARLES W. KNIGHT, JR.

TITLE ENGINEER (505) 599-4308

DATE

6/12/00

PERMIT NO.

APPROVAL DATE

Application approval does not warrant or certify that the applicant holds legal or equitable title to those rights in the subject lease which would entitle the applicant to conduct operations thereon.
CONDITIONS OF APPROVAL, IF ANY:

APPROVED BY

/s/ Jim Lovato

TITLE

Team Lead, Petroleum Management

DATE

AUG - 8 2000

*See Instructions On Reverse Side

District I
150 Box 1980, Hobbs, NM 88241-1980
District II
111 South First, Artesia, NM 88210
District III
1000 Rio Brazos Rd., Aztec, NM 87410
District IV
2040 South Pacheco, Santa Fe, NM 87505

State of New Mexico
Energy, Minerals & Natural Resources Department

OIL CONSERVATION DIVISION
2040 South Pacheco
Santa Fe, NM 87505

Form C-102
Revised October 18, 1994

Instructions on back
Submit to Appropriate District Office
State Lease - 4 Copies
Fee Lease - 3 Copies

☒ AMENDED REPORT

WELL LOCATION AND ACREAGE DEDICATION PLAT

1. Well Number 30-039-26474		2. Pool Code 71629		3. Pool Name Basin Fruitland Coal	
4. Property Code 26574		5. Property Name CARRACAS 2A			6. Well Number 11
7. OGRID No. 36619		8. Operator Name VASTAR RESOURCES, INC.			9. Elevation 6321

10 Surface Location

UL or lot no.	Section	Township	Range	Lot Idn	Feet from the	North/South line	Feet from the	East/West line	County
K	2	31N	5W		2405'	SOUTH	1880'	WEST	RIO ARriba

11 Bottom Hole Location If Different From Surface

UL or lot no.	Section	Township	Range	Lot Idn	Feet from the	North/South line	Feet from the	East/West line	County

12. Dedicated Acres	13. Joint or Infill	14. Consolidation Code	15. Order No.

NO ALLOWABLE WILL BE ASSIGNED TO THIS COMPLETION UNTIL ALL INTERESTS HAVE BEEN CONSOLIDATED OR A NON-STANDARD UNIT HAS BEEN APPROVED BY THE DIVISION

<p>16</p>				<p>17 OPERATOR CERTIFICATION</p> <p>I hereby certify that the information contained herein is true and complete to the best of my knowledge and belief.</p> <p><i>Charles W. Knight, Jr.</i> Signature Charles W. Knight, Jr. Printed Name Engineer Title June 9, 2000 Date</p>	
<p>18 SURVEYOR CERTIFICATION</p> <p>I hereby certify that the well location shown on this plat was plotted from field notes of actual surveys made by me or under my supervision, and that the same is true and correct to the best of my belief.</p> <p>06/06/00 Date of Survey Signature and Seal of Surveyor: <i>Henry P. Broadhurst</i> HENRY P. BROADHURST NEW MEXICO PROFESSIONAL SURVEYOR Certificate Number: 36619</p>					

VASTAR RESOURCES, INC.

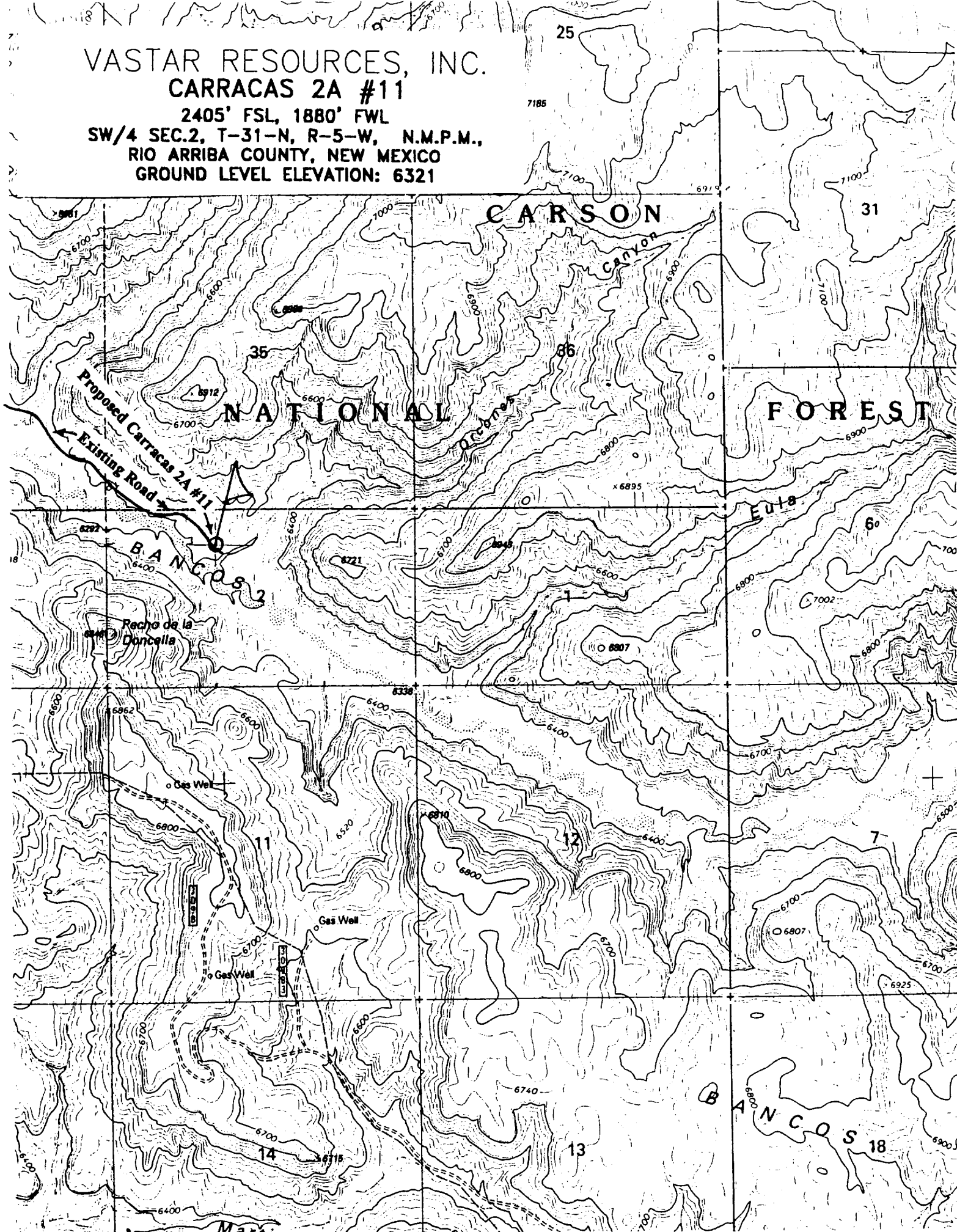
CARRACAS 2A #11

2405' FSL, 1880' FWL

SW/4 SEC.2, T-31-N, R-5-W, N.M.P.M.,

RIO ARriba COUNTY, NEW MEXICO

GROUND LEVEL ELEVATION: 6321



Vastar Resources, Inc.
Carracas 2 A #11
2405' FSL, 1880' FWL
Sec 2, T31N, R5W
Rio Arriba County, New Mexico

Page 1

DRILLING PLAN

1. **FORMATION TOPS:** The estimated tops of geologic markers as follows:

Ojo Alamo	2468'
Kirkland	2564'
Fruitland	2920'

2. **ANTICIPATED DEPTHS OF OIL, GAS, AND WATER:**

Ojo Alamo	2468' - Water
Fruitland	2920' - Gas

All zones capable of oil, gas, or water production will be protected with 8 5/8" or 5 1/2" casing and cemented to surface.

3. **BLOWOUT PREVENTOR REQUIREMENTS:**

<u>Interval</u>	<u>Pressure Control Equipment</u>
Surface - 400'	No equipment necessary
400' - TD	10" 2000 psi Double Ram preventor, rotating head and choke manifold.

All BOPE will be hydraulically pressure tested when nipped up, after well control use and every thirty days. Pressure tests will be to the lesser of 2000 psi or to 70% of the minimum internal yield pressure of the casing.

Blind rams will be functioned on each trip out of the hole. All BOPE checks will be noted on the daily drilling reports.

Additional BOPE equipment includes a kelly cock, FO safety valve and an inside BOP.

SEE ATTACHED BOP DIAGRAM

Vastar Resources, Inc.
 Carracas 2 A #11
 2405' FSL, 1880' FWL
 Sec 2, T31N, R5W
 Rio Arriba County, New Mexico

Page 2

4. **CASING AND CEMENTING PROGRAM:**

The proposed casing program will be as follows:

<u>Hole Section</u>	<u>Hole Size</u>	<u>Interval</u>	<u>Casing Size</u>	<u>Casing Specs</u>
Surface	12-1/4"	Surface to 400'	8-5/8"	24# J-55 STC
Production	7-7/8"	400' to 3230'	5-1/2"	17# J-55 LTC

<u>Hole Section</u>	<u>Slurries</u>
Surface	300 sx Class B with 3% CaCl ₂ & 1/4 lb/sk CF (354 cu. ft., 1.18 yield)
Production	Lead 800 sx 35:65 Class B:poz + 5#/sx Gilsonite + 1/4 lb/sk CF (1592 cu. ft., 1.99 yield) Tail 100 sx 50:50 Class B:poz + 5#/sx Gilsonite + 0.4% FLA + 1/4 lb/sk CF (138 cu. ft., 1.38 yield)

5. **MUD PROGRAM:** The proposed circulating mediums to be employed in drilling are as follows:

<u>Depth</u>	<u>Mud Type</u>	<u>Density</u>	<u>Funnel Vis</u>	<u>Fluid Loss</u>
Surface to 400'	Spud Mud	8.3 to 9.5 ppg	30 to 60	No Control
400' to 2600'	Water	8.3 to 8.7 ppg	28 to 35	No Control
2600' to TD	LSND	8.7 to 9.2 ppg	35 to 45	≤ 20 cc