

State of New Mexico
Energy, Minerals & Natural Resources

Form C-101
Revised March 17, 1999

District I
1625 N. French Dr., Hobbs, NM 88240
District II
811 S. 1st Street, Artesia, NM 88210
District III
1000 Rio Brazos Rd., Aztec, NM 87410
District IV
1220 S. St. Francis Dr., Santa Fe, NM 87505

Oil Conservation Division
1220 S. St. Francis Dr.
Santa Fe, NM 87505

Submit to appropriate District Office
State Lease - 6 Copies
Fee Lease - 5 Copies

☐ AMENDED REPORT

APPLICATION FOR PERMIT TO DRILL, RE-ENTER, DEEPEN, PLUGBACK, OR ADD A ZONE

¹ Operator Name and Address Phillips Petroleum Company 5525 Highway 64, NBU 3004, Farmington, NM 87401		² OGRID Number 017654
⁴ Property Code 009259		³ API Number 30- 039-26919
⁵ Property Name San Juan 31-6 Unit		⁶ Well No. 47M

⁷ Surface Location									
UL or lot no. C	Section 32	Township 31N	Range 6W	Lot. Idn	Feet from the 815'	North/South Line North	Feet from the 1465'	East/West line West	County Rio Arriba

⁸ Proposed Bottom Hole Location If Different From Surface									
UL or lot no. C	Section	Township	Range	Lot. Idn	Feet from the	North/South Line	Feet from the	East/West line	County
⁹ Proposed Pool 1 Basin Dakota - 71599					¹⁰ Proposed Pool 2 Blanco Mesaverde - 72319				

¹¹ Work Type Code N	¹² Well Type Code G	¹³ Cable/Rotary R	¹⁴ Lease Type Code State- E-289-3	¹⁵ Ground Level Elevation 6352'
¹⁶ Multiple Y	¹⁷ Proposed Depth 7963'	¹⁸ Formation Dakota	¹⁹ Contractor Key Energy	²⁰ Spud Date October 2002

²¹ Proposed Casing and Cement Program					
Hole Size	Casing Size	Casing weight/foot	Setting Depth	Sacks of Cement	Estimated TOC
12-1/4"	9-5/8"	32.3# H-40	*320'	197.6 sx	surface
8-3/4"	7"	20#, J/K-55	3525'	L-440sx	
				T-50 sx	surface
6-1/4"	4-1/2"	11.6#, I-80	7963' -	L-298.9 sx	
				T-20 sx	**

²² Describe the proposed program. If this application is to DEEPEN or PLUG BACK, give the data on the present productive zone and proposed new productive zone. Describe the blowout prevention program, if any. Use additional sheets if necessary.

* The Surface casing will be set at a minimum of 320', but could be set deeper if required to maintain hole stability.

** The Production String casing cement is designed to cover openhole section with 50% excess and 100' inside 7" shoe.

The BOP diagram is attached. There will be a cathodic protection grounded on location also.

²³ I hereby certify that the information given above is true and complete to the best of my knowledge and belief.		OIL CONSERVATION DIVISION	
Signature: <i>Patsy Clugston</i>		Approved by: <i>[Signature]</i>	
Printed name: Patsy Clugston		Title: DEPUTY DIR. & GAS DISTRICT MGR	
Title: Sr. Regulatory/Proration Clerk		Approval Date: FEB - 7 2002	Expiration Date: FEB - 7 2003
Date: 2/5/02	Phone:	Conditions of Approval:	
		Attached <input type="checkbox"/>	

District I
PO Box 1980, Hobbs, NM 88241-1980
District II
811 South First, Artesia, NM 88210
District III
1000 Rio Brazos Rd., Aztec, NM 87410
District IV
2040 South Pacheco, Santa Fe, NM 87505

State of New Mexico
Energy, Minerals & Natural Resources Department

OIL CONSERVATION DIVISION
2040 South Pacheco
Santa Fe, NM 87505

Form C-102
Revised October 18, 1994
Instructions on back
Submit to Appropriate District Office
State Lease - 4 Copies
Fee Lease - 3 Copies

☐ AMENDED REPORT

WELL LOCATION AND ACREAGE DEDICATION PLAT

¹ API Number 30-039-269.9	² Pool Code 71599	³ Pool Name Basin Dakota
⁴ Property Code 009259	⁵ Property Name SAN JUAN 31-6 UNIT	⁶ Well Number 47M
⁷ OGRID No. 017654	⁸ Operator Name PHILLIPS PETROLEUM COMPANY	⁹ Elevation 6352'

¹⁰ Surface Location

UL or lot no.	Section	Township	Range	Lot Idn	Feet from the	North/South line	Feet from the	East/West line	County
C	32	31N	6W		815'	NORTH	1465'	WEST	RIO ARriba

¹¹ Bottom Hole Location If Different From Surface

UL or lot no.	Section	Township	Range	Lot Idn	Feet from the	North/South line	Feet from the	East/West line	County
C									

¹² Dedicated Acres	¹³ Joint or Infill	¹⁴ Consolidation Code	¹⁵ Order No.
320 W/2	Y	U	

NO ALLOWABLE WILL BE ASSIGNED TO THIS COMPLETION UNTIL ALL INTERESTS HAVE BEEN CONSOLIDATED OR A NON-STANDARD UNIT HAS BEEN APPROVED BY THE DIVISION

	<p>¹⁷ OPERATOR CERTIFICATION I hereby certify that the information contained herein is true and complete to the best of my knowledge and belief</p> <p><i>Patsy Clugston</i> Signature Patsy Clugston Printed Name Sr. Regulatory/Proration Clerk Title 10-8-01 Date</p>
	<p>¹⁸ SURVEYOR CERTIFICATION I hereby certify that the well location shown on this plat was plotted from field notes of actual surveys made by me or under my supervision and that the same is true and correct to the best of my belief</p> <p>9/5/01 Date of Survey Signature and Seal of Professional Surveyor: </p> <p>Certificate Number</p>

District I
PO Box 1980, Hobbs, NM 88241-1980
District II
811 South First, Artesia, NM 88210
District III
1000 Rio Brazos Rd., Aztec, NM 87410
District IV
2040 South Pacheco, Santa Fe, NM 87505

State of New Mexico
Energy, Minerals & Natural Resources Department

OIL CONSERVATION DIVISION
2040 South Pacheco
Santa Fe, NM 87505

Form C-102
Revised October 18, 1994
Instructions on back
Submit to Appropriate District Office
State Lease - 4 Copies
Fee Lease - 3 Copies

☐ AMENDED REPORT

WELL LOCATION AND ACREAGE DEDICATION PLAT

¹ API Number 30039-26919	² Pool Code 72319	³ Pool Name Blanco Mesaverde
⁴ Property Code 009259	⁵ Property Name SAN JUAN 31-6 UNIT	⁶ Well Number 47M
⁷ OGRID No. 017654	⁸ Operator Name PHILLIPS PETROLEUM COMPANY	⁹ Elevation 6352'

¹⁰ Surface Location

UL or lot no. C	Section 32	Township 31N	Range 6W	Lot Idn	Feet from the 815'	North/South line NORTH	Feet from the 1465'	East/West line WEST	County RIO ARriba
--------------------	---------------	-----------------	-------------	---------	-----------------------	---------------------------	------------------------	------------------------	----------------------

¹¹ Bottom Hole Location If Different From Surface

UL or lot no. C	Section	Township	Range	Lot Idn	Feet from the	North/South line	Feet from the	East/West line	County
--------------------	---------	----------	-------	---------	---------------	------------------	---------------	----------------	--------

¹² Dedicated Acres 320 W/2	¹³ Joint or Infill Y	¹⁴ Consolidation Code U	¹⁵ Order No.
--	------------------------------------	---------------------------------------	-------------------------

NO ALLOWABLE WILL BE ASSIGNED TO THIS COMPLETION UNTIL ALL INTERESTS HAVE BEEN CONSOLIDATED OR A NON-STANDARD UNIT HAS BEEN APPROVED BY THE DIVISION

16	N89°57'E	5293.20'	¹⁷ OPERATOR CERTIFICATION I hereby certify that the information contained herein is true and complete to the best of my knowledge and belief Signature Patsy Clugston Printed Name Sr. Regulatory/Proration Clerk Title 10-8-01 Date
1465'	815'	5280.00'	
5280.00'	E-289-3 160 acres Section 32	5280.00'	¹⁸ SURVEYOR CERTIFICATION I hereby certify that the well location shown on this plat was plotted from field notes of actual surveys made by me or under my supervision and that the same is true and correct to the best of my belief 9/5/01 Date of Survey Signature and Seal of Professional Surveyor Certificate Number
N00°01'E	E-348-29	N00°01'E	
West	5280.00'		

PHILLIPS PETROLEUM COMPANY

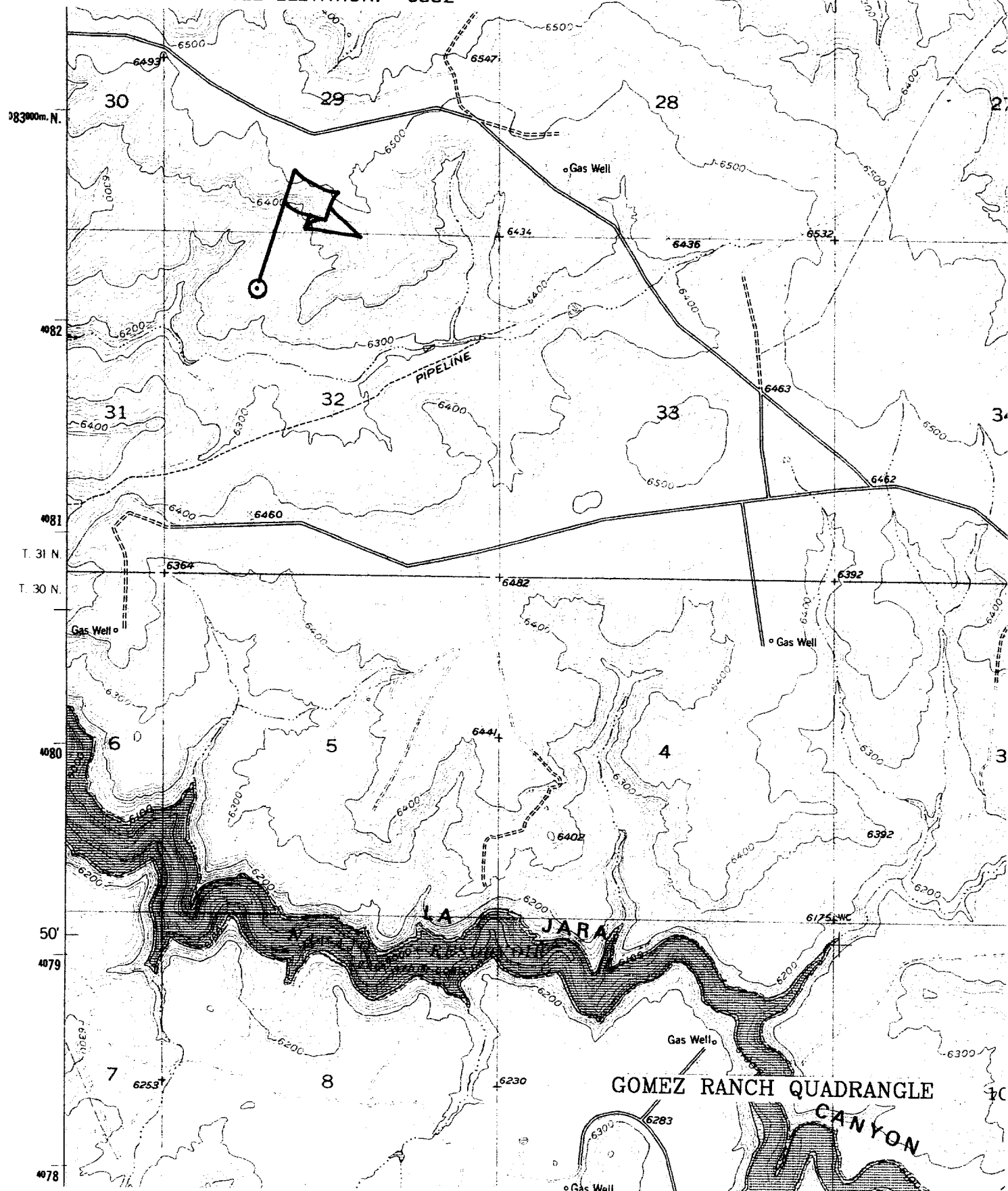
SAN JUAN 31-6 UNIT No. 47M

815' FNL, 1465' FWL

NW/4 SEC. 32, T-31-N, R-06-W, N.M.P.M.,

RIO ARriba COUNTY, NEW MEXICO

GROUND LEVEL ELEVATION: 6352'



BOP AND RELATED EQUIPMENT CHECK LIST

3M SYSTEM:

2 hydr. rams (pipe & blind) or hydr. ram and annular with blind ram on bottom

Kill Line (2-inch minimum)

1 kill line valve (2-inch minimum)

1 choke line valve

2 chokes (refer to diagram in attachment 1) on choke manifold

Upper kelly cock valve in open position with handle available

Safety valve (in open position) and subs to fit all drill strings in use (with handle available)

Pressure gauged on choke manifold

2 inch minimum choke line

Fill-up line above the uppermost preventer

The BOPs will be pressure tested according to Onshore Order #2 III, A 1 and 30% safety factor.