

SUBMIT IN TRIPLICATE*
(Other instructions on
reverse side)

Form approved.
Budget Bureau No. 1004-0136
Expires December 31, 1991

**UNITED STATES
DEPARTMENT OF THE INTERIOR
BUREAU OF LAND MANAGEMENT**

2002 MAR -6 11:40

5. LEASE DESIGNATION AND SERIAL NO.

SF- 078768

6. IF INDIAN, ALLOTTEE OR TRIBE NAME

7. UNIT AGREEMENT NAME

Rosa Unit

8. FARM OR LEASE NAME, WELL NO.

375

9. API WELL NO.

30-039-26948

10. FIELD AND POOL OR WILDCAT

Basin Fruitland Coal

11. SEC., T., R., M., OR BLK.
AND SURVEY OR AREA

K Sec. 24, T31N, R5W

12. COUNTY OR PARISH

Rio Arriba

13. STATE

NM

APPLICATION FOR PERMIT TO DRILL, DEEPEN, OR PLUG BACK

1a. TYPE OF WORK

DRILL ☒

DEEPEN ☐

1b. TYPE OF WELL

OIL
WELL ☐

GAS
WELL ☒

OTHER ☐

SINGLE
ZONE ☒

MULTIPLE
ZONE ☐

2. NAME OF OPERATOR

Williams Production Company, LLC

3. ADDRESS OF OPERATOR

c/o Walsh Engineering 7415 E. Main St., Farmington, NM 87402 (505) 327-4892

4. LOCATION OF WELL (Report location clearly and in accordance with any State requirements.)*

At Surface 1675' FSL and 1875' FWL

At proposed Prod. Zone

14. DISTANCE IN MILES AND DIRECTION FROM NEAREST TOWN OR POST OFFICE*

30 miles NE of Blanco, NM

15. DISTANCE FROM PROPOSED* LOCATION TO NEAREST PROPERTY
OR LEASE LINE, FT. (Also to nearest drlg. unit line, if any)

1675'

16. NO. OF ACRES IN LEASE

2560

17. NO. OF ACRES ASSIGNED TO THIS WELL

320 W/2

18. DISTANCE FROM PROPOSED LOCATION* TO NEAREST WELL,
DRILLING, COMPLETED, OR APPLIED FOR ON THIS LEASE, FT.

2800'

19. PROPOSED DEPTH

3451'

20. ROTARY OR CABLE TOOLS

Rotary

21. ELEVATIONS (Show whether DEEPENING or PLUG BACK)
6596'

**This action is subject to technical and
procedural review pursuant to 43 CFR 3165.3
and appeal pursuant to 43 CFR 3165.4.**

22. APPROX DATE WORK WILL START*

April 15, 2002

23. PROPOSED CASING AND CEMENTING PROGRAM

SIZE OF HOLE	SIZE OF CASING	WEIGHT/FOOT	SETTING DEPTH	QUANTITY OF CEMENT
12-1/4"	9-5/8"	36.0#	+/- 250'	~188 cu.ft. Type III with 2% CaCl ₂
8-3/4"	7"	20.0#	+/- 3341'	~795 cu.ft. 65/35 poz & ~209 cu.ft. Type I
6-1/4"	4-1/2"	15.5#	+/- 3451'	Open hole completion - no cement

Williams Production Company proposes to drill a vertical well to develop the Mesa Verde formation at the above described location in accordance with the attached drilling and surface use plans. The surface is under the jurisdiction of the United States Forest Service (USFS), Jicarilla Ranger District of the Carson National Forest. This location has been archaeologically surveyed by Independent Contract Archaeology. Copies of their report have been submitted directly to your office.

This APD also is serving as an application to obtain road and pipeline right-of-ways. This well will not require any new access road (see Pipeline & Well Plats #3 & #4). The well will be placed next to Forest Road 309B in the NE/SW of section 24, T31N, R5W.

**DRILLING OPERATIONS AUTHORIZED ARE
SUBJECT TO COMPLIANCE WITH ATTACHED
"GENERAL REQUIREMENTS"**

IN ABOVE SPACE DESCRIBE PROPOSED PROGRAM : If proposal is to deepen or plug back, give data on present productive zone and proposed new productive zone.
If proposal is to drill or deepen directionally, give pertinent data on subsurface locations and measured and true vertical depths. Give blowout preventer program, if any.

24. SIGNED [Signature] TITLE John C. Thompson, Agent DATE 3/5/02

(This space for Federal or State office use)

PERMIT NO. _____ APPROVAL DATE _____

Application approval does not warrant or certify that the applicant holds legal or equitable title to those rights in the subject lease which would entitle the applicant to conduct operations thereon.

CONDITIONS OF APPROVAL, IF ANY:

APPROVED BY /s/ David J. Mankiewicz TITLE _____ DATE SEP 12

***See Instructions On Reverse Side**

Title 18 U.S.C. Section 1001, makes it a crime for any person knowingly and willfully to make to any department or agency of the United States any false, fictitious or fraudulent statements or representations as to any matter within its jurisdiction.

District I
PO Box 1980, Hobbs, NM 88241-1980

District II
PO Drawer DD, Artesia, NM 88211-0719

District III
1000 Rio Brazos Rd., Aztec, NM 87410

District IV
PO Box 2088, Santa Fe, NM 87504-2088

State of New Mexico
Energy, Minerals & Natural Resources Department

OIL CONSERVATION DIVISION
PO Box 2088
Santa Fe, NM 87504-2088

Form C-102
Revised February 21, 1992
Instructions on back
Submit to Appropriate District Office
State Lease - 4 Copies
Fee Lease - 3 Copies

☐ AMENDED REPORT

WELL LOCATION AND ACREAGE DEDICATION PLAT

*API Number 30-039-26948		*Pool Code 71629	*Pool Name Basin Fruitland Coal
*Property Code 17033	*Property Name ROSA UNIT		*Well Number 375
*GRID No. 120782	*Operator Name WILLIAMS PRODUCTION COMPANY		*Elevation 6596'

10. Surface Location

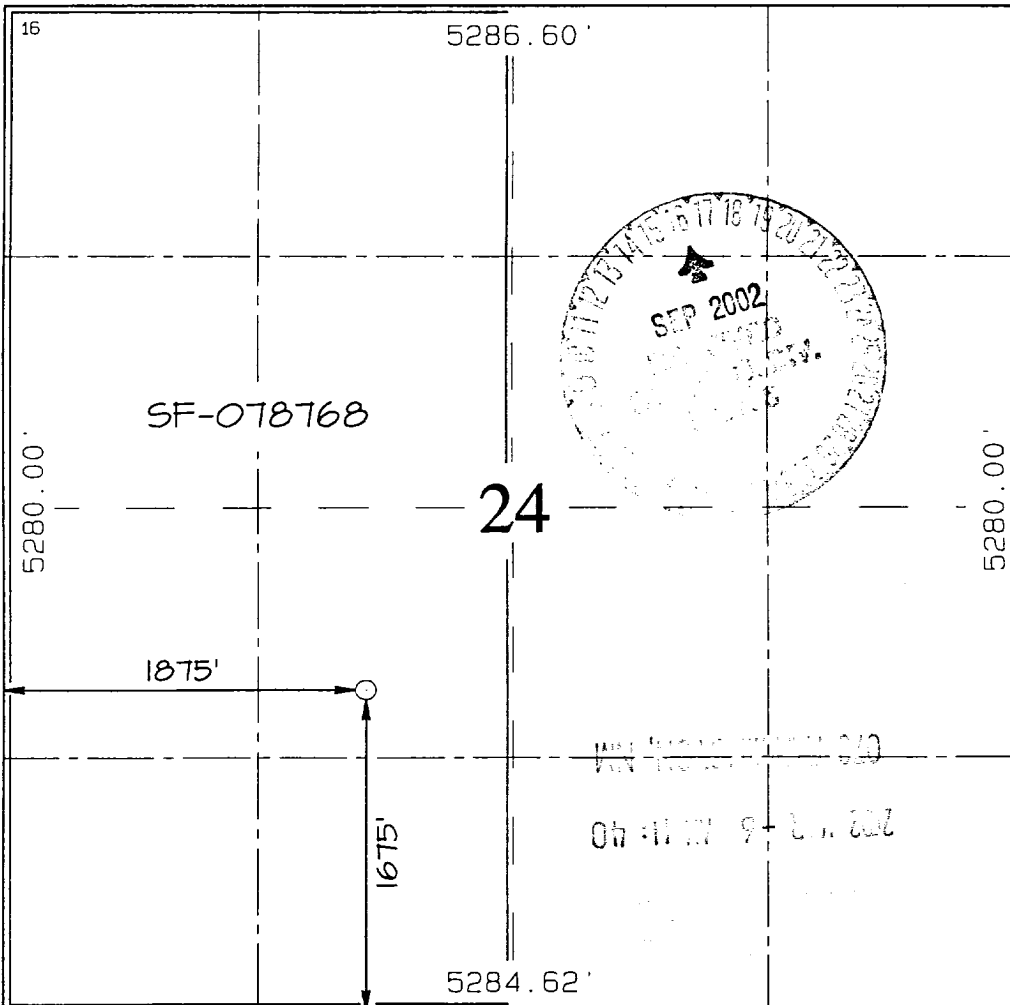
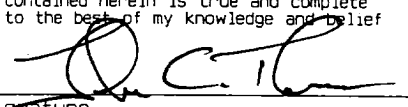

UL or lot no. K	Section 24	Township 31N	Range 5W	Lot Idn	Feet from the 1675	North/South line SOUTH	Feet from the 1875	East/West line WEST	County RIO ARriba
---------------------------	----------------------	------------------------	--------------------	---------	------------------------------	----------------------------------	------------------------------	-------------------------------	-----------------------------

11 Bottom Hole Location If Different From Surface

UL or lot no.	Section	Township	Range	Lot Idn	Feet from the	North/South line	Feet from the	East/West line	County
---------------	---------	----------	-------	---------	---------------	------------------	---------------	----------------	--------

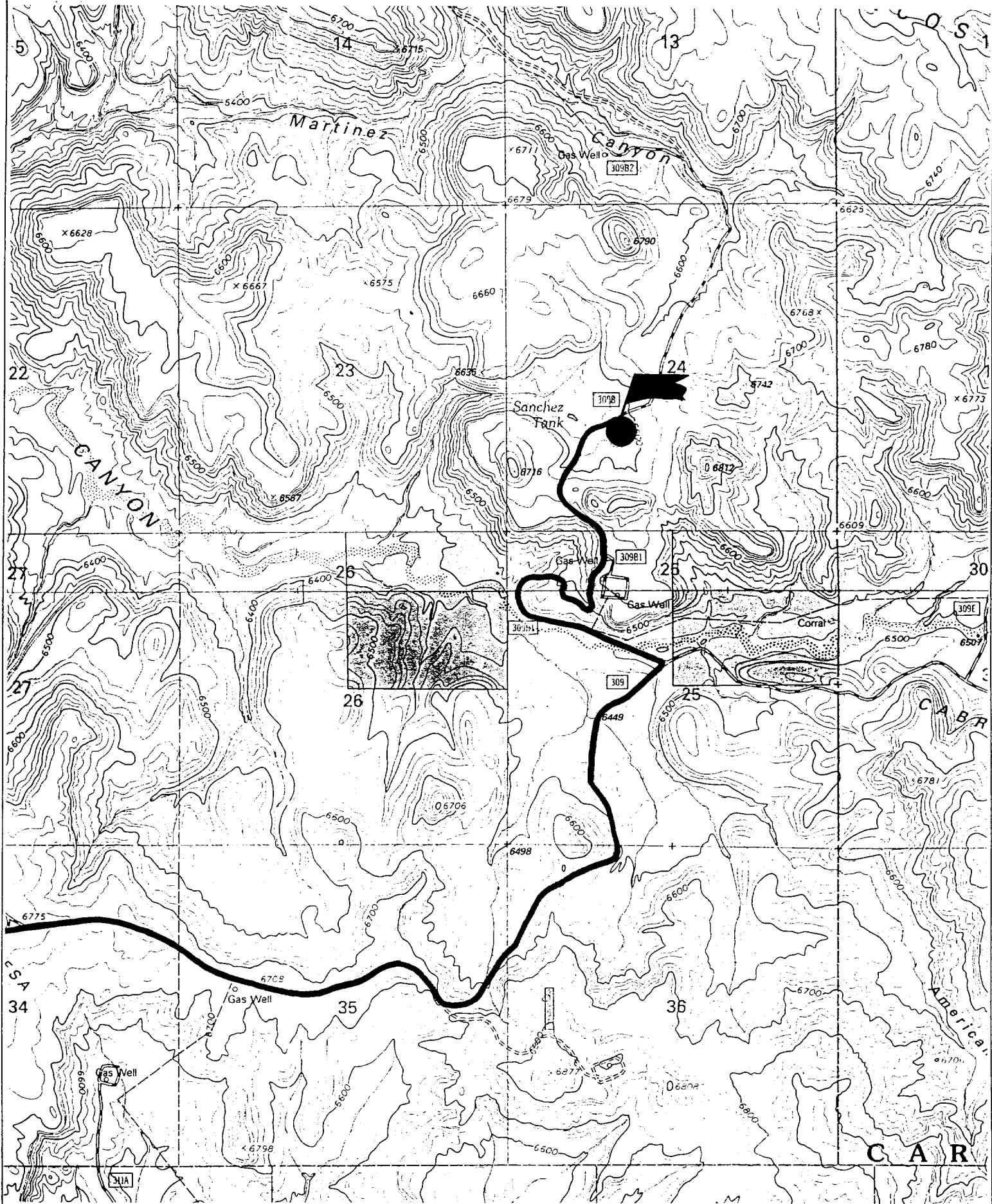
12 Dedicated Acres 320.0 Acres - (W/2)	13 Joint or Infill	14 Consolidation Code	15 Order No.
--	--------------------	-----------------------	--------------

NO ALLOWABLE WILL BE ASSIGNED TO THIS COMPLETION UNTIL ALL INTERESTS HAVE BEEN CONSOLIDATED
OR A NON-STANDARD UNIT HAS BEEN APPROVED BY THE DIVISION

	<p>16</p> <p>5286.60'</p> <p>SF-078768</p> <p>24</p> <p>5280.00'</p> <p>1875'</p> <p>1675'</p> <p>5284.62'</p>	<p>17 OPERATOR CERTIFICATION</p> <p>I hereby certify that the information contained herein is true and complete to the best of my knowledge and belief.</p> <p></p> <p>Signature</p> <p>John C. Thompson</p> <p>Printed Name</p> <p>Agent/Engineer</p> <p>Title</p> <p>3/05/02</p> <p>Date</p>
	<p>18 SURVEYOR CERTIFICATION</p> <p>I hereby certify that the well location shown on this plat was plotted from field notes of actual surveys made by me or under my supervision, and that the same is true and correct to the best of my belief.</p> <p>Survey Date: FEBRUARY 8, 2002</p> <p>Signature and Seal of Professional Surveyor</p> <p></p> <p>JASON C. EDWARDS</p> <p>Certificate Number 15269</p>	

WILLIAMS PRODUCTION COMPANY ROSA UNIT #375

1675' FSL & 1875' FWL, SECTION 24, T31N, R5W, N.M.P.M.
RIO ARriba COUNTY, NEW MEXICO



III. MATERIALS

A. CASING PROGRAM:

<u>CASING TYPE</u>	<u>HOLE SIZE</u>	<u>DEPTH</u>	<u>CASING SIZE</u>	<u>WT. & GRADE</u>
Surface	12-1/4"	+/- 250'	9-5/8"	36# K-55
Intermediate	8-3/4"	+/- 3341'	7"	20# K-55
Prod. Liner	6-1/4"	+/- 3241-3451'	5-1/2"	15.5# K-55

B. FLOAT EQUIPMENT:

1. SURFACE CASING: 9-5/8" notched regular pattern guide shoe.
2. INTERMEDIATE CASING: 7" cement nose guide shoe with a self- fill insert float. Place float one(1) joint above the shoe and five(5) centralizers, spaced every other joint, starting with the float collar. Place turbulent centralizers, at 120' intervals, starting at 1585' to the surface. Total centralizers = 5 regular and 14 turbulent.
3. PRODUCTION LINER: 5-1/2"liner with notched collar on bottom.

C. CEMENTING:

(Note: Volumes may be adjusted onsite due to actual conditions)

1. SURFACE: Use 130 sx (188 cu.ft.) of "Type III" with 2% CaCl₂ and 1/4# of cello-flake/sk (Yield = 1.41 cu.ft./sk, Weight = 14.5 #/gal.). Use 125% excess to circulate the surface. WOC 12 hours. Test to 1500#.
2. INTERMEDIATE: Lead - 380 sx (795 cu.ft.) of "Type III" 65/35 poz with 8% gel, 1% CaCl₂ and 1/4# cello-flake/sk (Yield = 2.09 cu.ft./sk, Weight = 12.1 #/gal.). Tail - 150 sx (209cu.ft.) of "Type III" with 1/4# cello-flake/sk, and 1% CaCl₂ (Yield = 1.4 cu.ft./sk, Weight = 14.5#/gal.). Use 100% excess in lead and tail to circulate to surface. Total volume = 1004 cu.ft. WOC 12 hours. Run a temperature survey after 8 hours if cement is not circulated. Test to 1500#.
3. PLUGBACK: 30 sk (41.7cft) of "Type III + 1% CaCl (Yield = 1.39 cft/ft, weight = 14.5 ppg) Set plug over PC formation after logging.
4. PRODUCTION LINER: Open hole completion. No cement.

IV COMPLETION

A. PRESSURE TEST

Pressure test 7" casing to 3300# for 15 minutes.

B. STIMULATION

Cavitate Well with reciprocation and rotation. Surge wells with water and air and then flow back to pit. Cavitate for 2 to 3 weeks. Maximum pressure not expected to exceed 2,000 psi.

Walsh Engineering & Production

Well Control Equipment Schematic for 2M Service

Attachment to Drilling Technical Program

Typical BOP setup

Location: San Juan Basin, New Mexico

Date: August 20, 2001

By: John Thompson

