

District I
PO Box 1980, Hobbs, NM 88241-1980
District II
PO Drawer DD, Artesia, NM 88211-0719
District III
1000 Rio Brazcos Rd., Aztec, NM 87410
District IV
PO Box 2088, Santa Fe, NM 87504-2088

State of New Mexico
Energy, Minerals & Natural Resources Department

OIL CONSERVATION DIVISION
PO Box 2088
Santa Fe, NM 87504-2088

Form C-101
Revised February 21, 1994
Instructions on back
Submit to Appropriate District Office
State Lease - 6 Copies
Fee Lease - 5 Copies

☐ AMENDED REPORT

APPLICATION FOR PERMIT TO DRILL, RE-ENTER, DEEPEN, PLUGBACK, OR ADD A ZONE

¹ Operator Name and Address. Williams Production Company, LLC c/o Walsh Engineering 7415 E. Main Street Farmington, NM 87401		² OGRID Number 120782
⁴ Property Code 17033	⁵ Property Name Rosa Unit	³ API Number 30-039-26985
		⁶ Well No. 148B

⁷ Surface Location

UL or lot no.	Section	Township	Range	Lot Idn	Feet from the	North/South line	Feet from the	East/West line	County
P	2	31N	6W	se se	230'	South	1125'	East	Rio Arriba

⁸ Proposed Bottom Hole Location If Different From Surface

UL or lot no.	Section	Township	Range	Lot Idn	Feet from the	North/South line	Feet from the	East/West line	County
⁹ Proposed Pool 1 Blanco Mesaverde					¹⁰ Proposed Pool 2				

¹¹ Work Type Code N	¹² Well Type Code G	¹³ Cable/Rotary R	¹⁴ Lease Type Code S	¹⁵ Ground Level Elevation 6236'
¹⁶ Multiple No	¹⁷ Proposed Depth 5983'	¹⁸ Formation Mesaverde	¹⁹ Contractor Aztec Well Service	²⁰ Spud Date When Permitted

²¹ Proposed Casing and Cement Program

Hole Size	Casing Size	Casing weight/foot	Setting Depth	Sacks of Cement	Estimated TOC
12-1/4"	9-5/8"	36 ppf	500'	353 sx	Surface
8-3/4"	7"	20 ppf	3543'	390 sx & 180 sx	Surface
6-1/4"	4-1/2"	10.5 ppf	5983'-3443' (liner)	100 sx & 100 sx	~3443'

²² Describe the proposed program. If this application is to DEEPEN or PLUG BACK give the data on the present productive zone and proposed new productive zone. Describe the blowout prevention program, if any. Use additional sheets if necessary.

Williams proposes to drill a vertical well w/ a 12-1/4" surface hole w/ water & benex to approx. 500' and set 9-5/8", 36#, K-55 casing, cement to surface w/ ~ 255 sx (353 cu.ft.) of Type III, w/ 2% CaCl2 & 1/4# of CF. Will then drill a 8-3/4" hole to approx. 3543' w/ clear water & Benex. and set 7", 20#, K-55 casing, cement w/ 390 sx (815 cu.ft.) of 65/35 Type III/Poz w/ 8% gel, 1% CaCl2 & 1/4#sx CF. Tail w/ 180 sx (250 cu.ft.) of Type III w/ 1/4#sx CF & 1% CaCl2. Cement volumes calculated to circulate cement to surface. Will then drill 6-1/4" hole to TD @ approx 5983' w/ air. Run open hole surveys. Set 4-1/2", 10.5#, K-55 casing and cement w/ 100 sx (202 cu.ft.) of Premium Light HS w/ 1% FL-52, 0.3% CD-32 & 2% KCl. Tail w/ 100 sx (198 cu.ft.) of Premium Light HS, 1% FL-52, 0.3% CD-32, 2% KCl, 0.25#/sk CF & 4% Phenoseal. Cement volume calculated to bring TOC to cover liner top at approx. 3443'. After 9-5/8" surface is set a 2M (double ram) blowout preventer will be installed & pressure tested to 1500 psi. A 2" kill line & 2" line to a choke manifold will also be installed.

Will test the Mesaverde through perforated casing. Will fracture stimulate the Mesaverde in 2 stages. A RBP will isolate the PLO from the Menefee/CH zones during the stimulations. If productive, the Mesaverde will be produced thru thru 2-3/8" tbg.

Geologic Tops: Ojo Alamo - 2293', Kirtland - 2393', Fruitland - 2813', Pictured Cliffs - 3068', Lewis - 3378', Cliff House 5273', Menefee - 5318', Point Lookout - 5533', Mancos - 5838'

²³ I hereby certify that the information given above is true and complete to the best of my knowledge and belief.

Signature:

Printed name:

John C. Thompson

Title:

Agent / Engineer

Date:

4/22/02

Phone:

505-327-4892

OIL CONSERVATION DIVISION

Approved by:

Title:

SUPPLY OIL & GAS INSPECTOR DIST. 3

Approval Date:

APR 22 2002

Expiration Date:

APR 22 2003

Conditions of Approval:

Attached ☐

District I
PO Box 1980, Hobbs, NM 88241-1980

State of New Mexico
Energy, Minerals & Natural Resources Department

Form C-102

Revised February 21, 1994

District II
PO Drawer DD, Artesia, NM 88211-0719

OIL CONSERVATION DIVISION
PO Box 2088
Santa Fe, NM 87504-2088

Submit to Appropriate District Office
State Lease - 4 Copies
Fee Lease - 3 Copies

District III
1000 Rio Brazos Rd., Aztec, NM 87410

District IV
PO Box 2038, Santa Fe, NM 87504-2088

☐ AMENDED REPORT

WELL LOCATION AND ACREAGE DEDICATION PLAT

*API Number 30-039-26985		*Pool Code 72319	*Pool Name BLANCO MESAVERDE
*Property Code 17033	*Property Name ROSA UNIT COM		*Well Number 1488
*GRID No. 120782	*Operator Name WILLIAMS PRODUCTION COMPANY		*Elevation 6236'

¹⁰ Surface Location

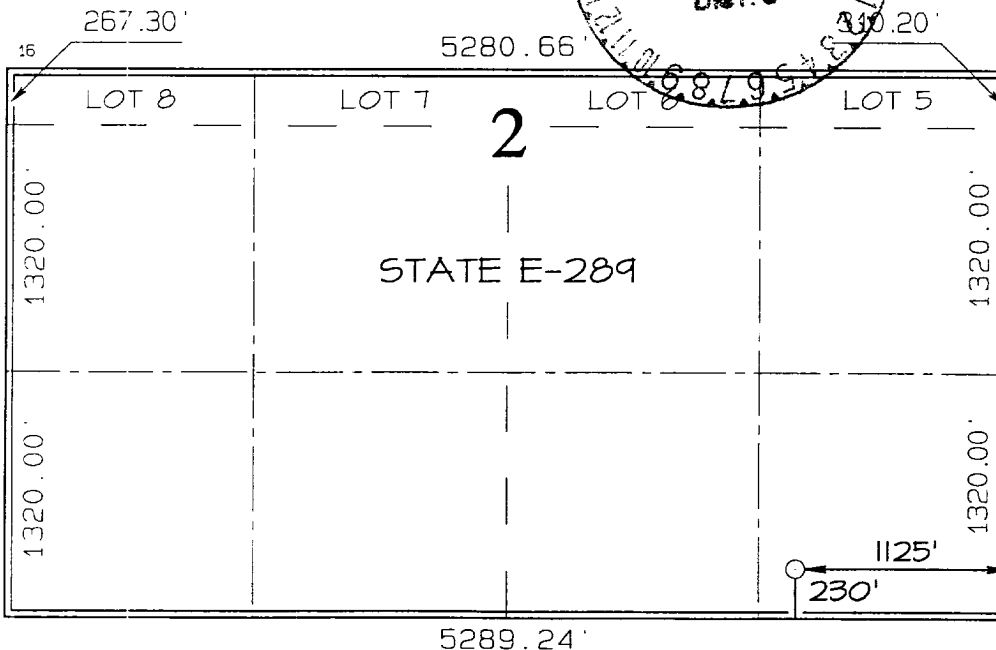
UL or lot no. P	Section 2	Township 31N	Range 6W	Lot Idn	Feet from the 230	North/South line SOUTH	Feet from the 1125	East/West line EAST	County RIO ARriba
--------------------	--------------	-----------------	-------------	---------	----------------------	---------------------------	-----------------------	------------------------	----------------------

¹¹ Bottom Hole Location If Different From Surface

UL or lot no.	Section	Township	Range	Lot Idn	Feet from the	North/South line	Feet from the	East/West line	County
---------------	---------	----------	-------	---------	---------------	------------------	---------------	----------------	--------

¹² Dedicated Acres 356.26 Acres - Entire Section	¹³ Joint or Infill	¹⁴ Consolidation Code	¹⁵ Order No.
--	-------------------------------	----------------------------------	-------------------------

NO ALLOWABLE WILL BE ASSIGNED TO THIS COMPLETION UNTIL ALL INTERESTS HAVE BEEN CONSOLIDATED
OR A NON-STANDARD UNIT HAS BEEN APPROVED BY THE DIVISION



¹⁷ OPERATOR CERTIFICATION

I hereby certify that the information contained herein is true and complete to the best of my knowledge and belief.

Signature *[Signature]*

John C. Thompson

Printed Name
Agent/Engineer

Title
4/15/02

Date

¹⁸ SURVEYOR CERTIFICATION

I hereby certify that the well location shown on this plat was plotted from field notes of actual surveys made by me or under my supervision, and that the same is true and correct to the best of my belief.

Date of Survey: MARCH 29, 2002

Signature and Seal of Professional Surveyor



JASON C. EDWARDS
Certificate Number 15269

WILLIAMS PRODUCTION COMPANY ROSA UNIT COM #148B

230' FSL & 1125' FEL, SECTION 2, T31N, R6W, N.M.P.M.

RIO ARriba COUNTY, NEW MEXICO

