

**NEW MEXICO OIL CONSERVATION COMMISSION
WELL LOCATION AND ACREAGE DEDICATION PLAT**

Form C-102
Supersedes C-128
Effective 1-1-65

All distances must be from the outer boundaries of the Section.

Operator Tenneco Oil Company			Lease Bassett		Well No. 2
Unit Letter G	Section 33	Township 30N	Range 10W	County San Juan	
Actual Footage Location of Well: <div style="display: flex; justify-content: space-between; align-items: center;"> 3505 feet from the South line and 1530 feet from the East line </div>					
Ground Level Elev. 6087.4'	Producing Formation Pictured Cliffs		Pool Aztec Pictured Cliffs		Dedicated Acreage: 160 Acres

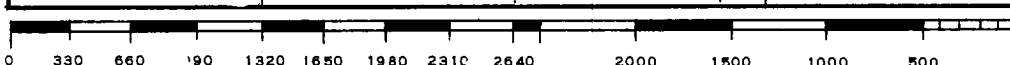
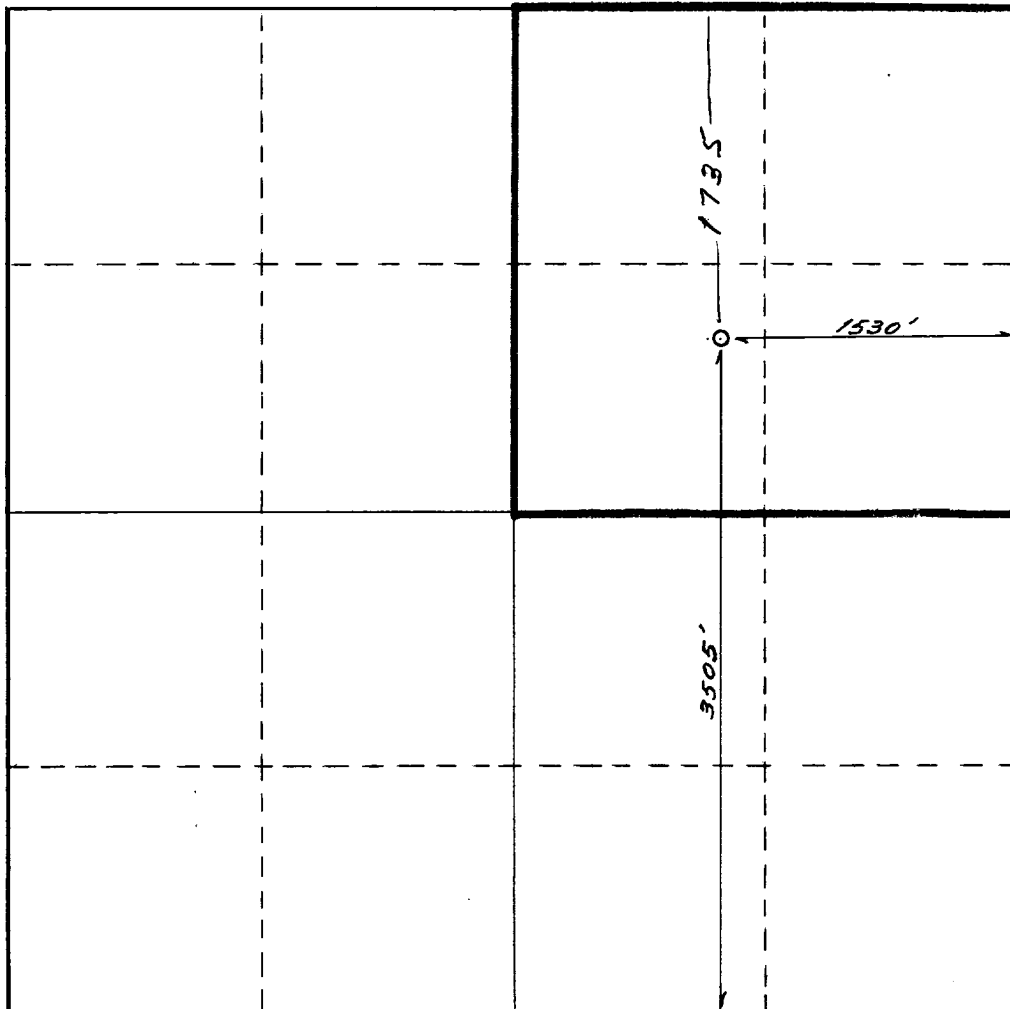
1. Outline the acreage dedicated to the subject well by colored pencil or hachure marks on the plat below.
2. If more than one lease is dedicated to the well, outline each and identify the ownership (if different from the working interest and royalty).
3. If more than one lease of different ownership is dedicated to the well, have the interests of all owners been consolidated by communitization, unitization, force-pooling, etc?



☐ Yes ☐ No If answer is "yes," type of consolidation _____

If answer is "no," list the owners and tract descriptions which have actually been consolidated. (Use reverse side of this form if necessary.) _____

No allowable will be assigned to the well until all interests have been consolidated (by communitization, unitization, forced-pooling, or otherwise) or until a non-standard unit, eliminating such interests, has been approved by the Commission.



CERTIFICATION	
I hereby certify that the information contained herein is true and complete to the best of my knowledge and belief.	
Name <i>Don B. Cook</i>	
Position Production Clerk	
Company Tenneco Oil Company	
Date 8/8/68	
I hereby certify that the well location shown on this plat was plotted from field notes of actual surveys made by me or under my supervision, and that the same is true and correct to the best of my knowledge and belief.	
Date Surveyed _____	
Registered Professional Engineer and/or Land Surveyor _____	
Certificate No. _____	

NEW MEXICO OIL CONSERVATION COMMISSION

Santa Fe, New Mexico

It is necessary that Form C-104 be approved before this form can be approved and an initial allowable be assigned to any completed Oil or Gas well. Submit this form in QUADRUPLICATE.

CERTIFICATE OF COMPLIANCE AND AUTHORIZATION
TO TRANSPORT OIL AND NATURAL GAS

Company or Operator **The Bay Petroleum Corporation** Lease **Bassett-Federal**

Address **Denver, Colorado** **Denver, Colorado**
(Local or Field Office) (Principal Place of Business)

Unit **160**, Well(s) No. **2**, Sec. **33**, T. **30N**, R. **8W**, Pool **Blanco**

County **San Juan** Kind of Lease: **Federal**

If Oil well Location of Tanks

Authorized Transporter **El Paso Natural Gas Company** Address of Transporter

Farmington, New Mexico **El Paso, Texas**
(Local or Field Office) (Principal Place of Business)

Per cent of Oil or Natural Gas to be Transported **100** Other Transporters authorized to transport Oil or Natural Gas from this unit are

REASON FOR FILING: (Please check proper box)

NEW WELL ☒ CHANGE IN OWNERSHIP ☐

CHANGE IN TRANSPORTER ☐ OTHER (Explain under Remarks) ☐

REMARKS:

The undersigned certifies that the Rules and Regulations of the Oil Conservation Commission have been complied with.

Executed this the **31st** day of **March** 19**54**

THE BAY PETROLEUM CORPORATION

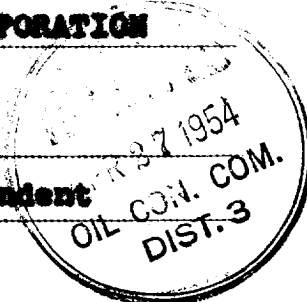
Approved **4-28**, 19**54**

OIL CONSERVATION COMMISSION

By **George Amalf**

Title **Oil and Gas Inspector Dist. #3.**

By **Pat Lay**
Title **District Superintendent**



INSTRUCTIONS

This form shall be executed and filed in QUADRUPLICATE with the District Office of the Oil Conservation Commission, covering each unit from which oil or gas is produced. A separate certificate shall be filed for each transporter authorized to transport oil or gas from a unit. After said certificate has been approved by the Oil Conservation Commission, one copy shall be forwarded to the transporter, one copy returned to the producer, and two copies retained by the Oil Conservation Commission.

A new certificate shall be filed to cover each change in operating ownership and each change in the transporter, except that in the case of a temporary change in the transporter involving less than the allowable production for one proration period, the operator shall in lieu of filing a new certificate notify the Oil Conservation Commission District Office, and the transporter authorized by certificate on file with the Commission, by letter of the estimated amount of oil or gas to be moved by the transporter temporarily moving oil or gas from the unit and the name of such temporary transporter and a copy of such notice shall also be furnished such temporary transporter. Such temporary transporter shall not move any more oil or gas than the estimated amount shown in said notice.

This certificate when properly executed and approved by the Oil Conservation Commission shall constitute a permit for pipe line connection and authorization to transport oil and gas from the property named therein and shall remain in full force and effect until

- (a) Operating ownership changes
- (a) The transporter is changed or
- (c) The permit is cancelled by the Commission.

If any of the rules and regulations of the Oil Conservation Commission have not been complied with at the same time this report is filed, explain fully under the heading "REMARKS."

In all cases where this certificate is filed to cover a change in operating ownership or a change in the transporter designated to move oil or gas, show under "REMARKS" the previous owner or operator and the transporter previously authorized to transport oil or gas.

A separate report shall be filed to cover each producing unit as designated by the Oil Conservation Commission.

OIL CONSERVATION COMMISSION		
AZTEC DISTRICT OFFICE		
No. Copies Received <u>4</u>		
DISTRIBUTION		
	NO. FURNISHED	
Operator		
Santa Fe	<u>1</u>	
Proration Office	<u>1</u>	
State Land Office		
U. S. G. S.		
Transporter	<u>1</u>	
File	<u>1</u>	