

UNITED STATES  
DEPARTMENT OF THE INTERIOR  
GEOLOGICAL SURVEY

SUNDRY NOTICES AND REPORTS ON WELLS

(Do not use this form for proposals to drill or to deepen or plug back to a different reservoir. Use Form 9-331-C for such proposals.)

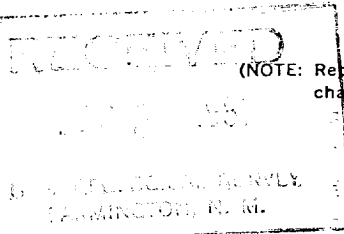
1. oil ☐ well gas ☐ well other ☒ Dry Hole
2. NAME OF OPERATOR  
Ladd Petroleum Corp.
3. ADDRESS OF OPERATOR  
P O Box 208, Farmington, NM 87401
4. LOCATION OF WELL (REPORT LOCATION CLEARLY. See space 17 below.)  
AT SURFACE: 790' FSL - 1850' FWL  
AT TOP PROD. INTERVAL:  
AT TOTAL DEPTH:
16. CHECK APPROPRIATE BOX TO INDICATE NATURE OF NOTICE, REPORT, OR OTHER DATA

REQUEST FOR APPROVAL TO:

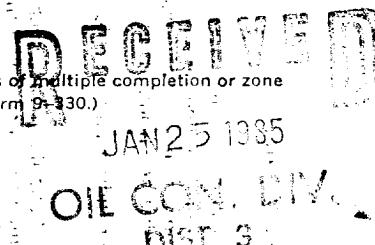
- TEST WATER SHUT-OFF ☐  
FRACTURE TREAT ☐  
SHOOT OR ACIDIZE ☐  
REPAIR WELL ☐  
PULL OR ALTER CASING ☐  
MULTIPLE COMPLETE ☐  
CHANGE ZONES ☐  
ABANDON\* ☐  
(other) ☐

SUBSEQUENT REPORT OF:

- ☐  
☐  
☐  
☐  
☐  
☐  
☐  
☐  
☐  
☐  
☒



(NOTE: Report results of multiple completion or zone change on Form 9-330.)



17. DESCRIBE PROPOSED OR COMPLETED OPERATIONS (Clearly state all pertinent details, and give pertinent dates, including estimated date of starting any proposed work. If well is directionally drilled, give subsurface locations and measured and true vertical depths for all markers and zones pertinent to this work.)\*

The above well was plugged and abandoned as follows:

1. Spotted 25 sk cement plug from 5926' to 5600'.
2. Perf. csg. at 4986' and spotted 33 sk plug 4986-4886'
3. Perf. csg. at 3664' and spotted 33 sk plug 3664-3564'
4. Perf. csg. at 2810' and spotted 33 sk plug 2810-2710'
5. Shot off 4 1/2" csg. at 1407' and spotted 25 sk plug 50' inside 4 1/2" csg. and 50' above csg. stub.
6. Spotted 30 sk cement plug 700' to 600'.
7. Spotted 30 sk cement plug in bottom of surface csg. 250' to 150'.
8. Installed dry hole marker w/ 10 sk plug at surface.
9. Cleaned and leveled location and seeded w/ seed mixture #3.

\*Work completed 9-15-81.

Subsurface Safety Valve: Manu. and Type \_\_\_\_\_ Set @ \_\_\_\_\_ Ft.

18. I hereby certify that the foregoing is true and correct

SIGNED \_\_\_\_\_ TITLE Geologist DATE 9-17-81

(This space for Federal or State office use)

APPROVED BY \_\_\_\_\_ TITLE \_\_\_\_\_ DATE \_\_\_\_\_  
CONDITIONS OF APPROVAL, IF ANY:

APPROVED  
AS AMENDED

JAN 22 1985

/s/ J. Stan McKee

M. MILLENBACH  
AREA MANAGER

Approved as to plugging of the well bore  
Liability under bond is retained until  
surface restoration is completed.

NMOCC

structions on Reverse Side