

District I *Denny L. Tait*  
P.O. Box 1980, Hobbs, NM  
District II **DEPUTY OIL & GAS INSPECTOR**  
P.O. Drawer DD, Artesia, NM 88221

State of New Mexico  
Energy, Minerals and Natural Resources Department

SUBMIT COPY TO  
APPROPRIATE  
DISTRICT OFFICE  
AND 1 COPY TO  
SANTA FE OFFICE

OIL CONSERVATION DIVISION

2040 South Pacheco Street  
Santa Fe, New Mexico 87505

**PIT REMEDIATION AND CLOSURE REPORT**

DEC 31 1997  
10 01 31 AM

CL 000000

Operator: PNM Gas Services (Amoco) Telephone: 324-3764

Address: 603 W. Elm Street Farmington, NM 87401

Facility or Well Name: Giomi GC C #1

Location: Unit: M Sec. 28 T. 30 N R. 9 W County San Juan

Pit Type: Separator        Dehydrator ☒ Other       

Land Type: BLM ☒ State        Fee        Other       

Pit Location: Pit dimensions: length 20 width 20 depth 5

(Attach diagram) Reference: wellhead ☒ other       

Footage from reference: 50'

Direction from reference: 70 Degrees        East        North ☒  
of  
☒ West        South       

**Depth to Ground Water:**

(Vertical distance from contaminants to  
seasonal high water elevation of ground  
water)

Less than 50 feet	(20 points)	
50 feet to 99 feet	(10 points)	
Greater than 100 feet	(0 points)	<u>0</u>

**Wellhead Protection Area:**

(Less than 200 feet from a private  
domestic water source, or, less than 1,000  
feet from all other water sources)

Yes	(20 points)	
No	(0 points)	<u>0</u>

**Distance to Surface Water:**

(Horizontal distance to perennial lakes,  
ponds, rivers, streams, creeks, irrigation  
canals and ditches)

Less than 200 feet	(20 points)	
200 feet to 1,000 feet	(10 points)	
Greater than 1,000 feet	(0 points)	<u>0</u>

**RANKING SCORE (TOTAL POINTS):** 0

Date Remediation Started:

7/9/96

Date Completed:

7/16/96

Remediation Method:

Excavation

☒

Approx. Cubic Yard

387

(Check all appropriate sections)

Landfarmed

☒

Amount Landfarmed (cubic yds)

387

Other

Remediation Location:

Onsite

☒

Offsite

(i.e., landfarmed onsite, name and location of offsite facility)

Backfill Material Location:

General Description of Remedial Action:

Excavated contaminated soil to pit size 29'x18'x20' and landfarmed soil onsite within a bermed area at a depth of 6" to 12". Soil was aerated by plowing/disking until soil met regulatory levels.

Ground Water Encountered:

No

☒

Yes

Depth

Final Pit Closure Sampling:

Sample Location

5 pt. composite-4 side walls and center of pit bottom

(if multiple samples, attach sample result and diagram of sample locations and depths.)

Sample depth

20'

Sample date

7/10/96

Sample time

11:30:00 AM

Sample Results

Benzene (ppm)

0.0594

Total BTEX (ppm)

1.0253

Field headspace (ppm)

TPH

&lt;

5.00

Method

8015A

Vertical Extent (ft)

Risk Assessment form attached

Yes

☐

No

☒

Ground Water Sample:

Yes

☐

No

☒

(If yes, attach sample results)

I HEREBY CERTIFY THAT THE INFORMATION ABOVE IS TRUE AND COMPLETE TO THE BEST OF MY KNOWLEDGE AND MY BELIEF

DATE

October 25, 1996

PRINTED NAME  
AND TITLE

Maureen Gannon

Environmental Engineer

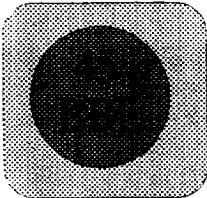
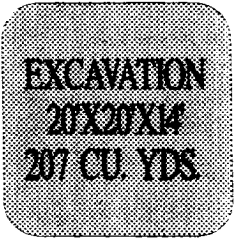
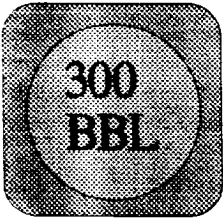
SIGNATURE

*Maureen Gannon*

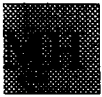
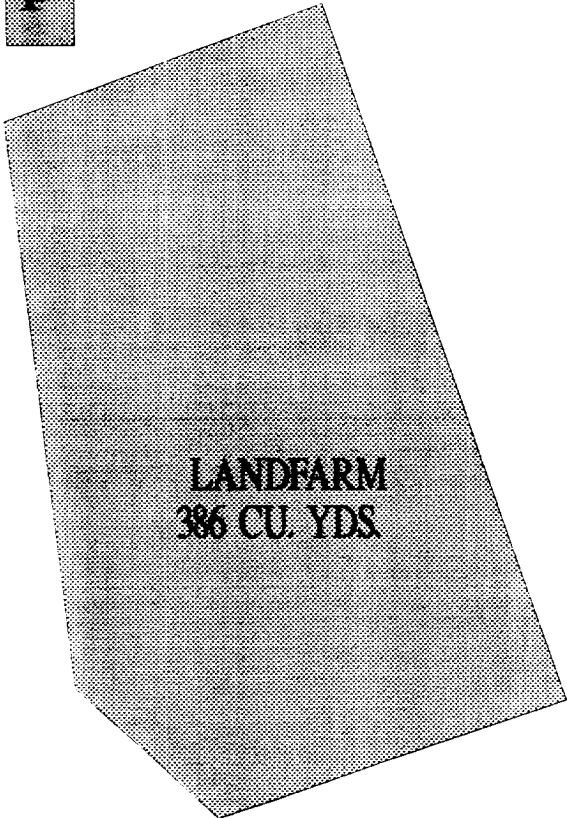
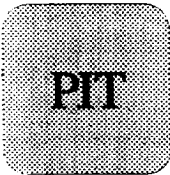
GIOMI GAS COM C #1 EXCAVATION  
07/16/96



WH



DH



OFF: (505) 325-5667



LAB: (505) 325-1556

### *Diesel Range Organics*

Attn: *Denver Bearden*  
Company: *PNM Gas Services*  
Address: *603 W. Elm*  
City, State: *Farmington, NM 87401*

Date: *12-Jul-96*  
COC No.: *4729*  
Sample No. *11479*  
Job No. *2-1000*

Project Name: *PNM Gas Services - Gioni #1*  
Project Location: *9607101130; Pit Excavation Composite Sample*  
Sampled by: *RH* Date: *10-Jul-96* Time: *11:30*  
Analyzed by: *DC* Date: *12-Jul-96*  
Sample Matrix: *Soil*

### *Laboratory Analysis*

<i>Parameter</i>	<i>Result</i>	<i>Unit of Measure</i>	<i>Detection Limit</i>	<i>Unit of Measure</i>
<i>Diesel Range Organics (C10 - C28)</i>	<i>&lt;5.0</i>	<i>mg/kg</i>	<i>5.0</i>	<i>mg/kg</i>

### *Quality Assurance Report*

DRO QC No.: *0475-QC*

#### *Calibration Check*

<i>Parameter</i>	<i>Method Blank</i>	<i>Unit of Measure</i>	<i>True Value</i>	<i>Analyzed Value</i>	<i>% Diff</i>	<i>Limit</i>
<i>Diesel Range (C10 - C28)</i>	<i>&lt;5.0</i>	<i>ppm</i>	<i>2,000</i>	<i>1,832</i>	<i>8.4</i>	<i>15%</i>

#### *Matrix Spike*

<i>Parameter</i>	<i>1- Percent Recovered</i>	<i>2 - Percent Recovered</i>	<i>Limit</i>	<i>%RSD</i>	<i>Limit</i>
<i>Diesel Range (C10-C28)</i>	<i>114</i>	<i>104</i>	<i>(70-130)</i>	<i>7</i>	<i>20%</i>

**Method** - SW-846 EPA Method 8015A mod. - Nonhalogenated Volatile Hydrocarbons by Gas Chromatography

Approved by: *DC*  
Date: *7/12/96*

P.O. BOX 2606 • FARMINGTON, NM 87499

- TECHNOLOGY BLENDING INDUSTRY WITH THE ENVIRONMENT -

OFF: (505) 325-5667



LAB: (505) 325-1556

### AROMATIC VOLATILE ORGANICS

Attn: *Denver Bearden*  
Company: *PNM Gas Services*  
Address: *603 W. Elm*  
City, State: *Farmington, NM 87401*

Date: *2-Jul-96*  
COC No.: *4729*  
Sample No.: *11479*  
Job No.: *2-1000*

Project Name: *PNM Gas Services - Giomi #1*  
Project Location: *9607101130; Pit Excavation Composite Sample*  
Sampled by: *RH* Date: *10-Jul-96* Time: *11:30*  
Analyzed by: *HR* Date: *11-Jul-96*  
Sample Matrix: *Soil*

#### Laboratory Analysis

Component	Result	Unit of Measure	Detection Limit	Unit of Measure
<i>Benzene</i>	<i>59.4</i>	<i>ug/kg</i>	<i>0.2</i>	<i>ug/kg</i>
<i>Toluene</i>	<i>13.8</i>	<i>ug/kg</i>	<i>0.2</i>	<i>ug/kg</i>
<i>Ethylbenzene</i>	<i>4.2</i>	<i>ug/kg</i>	<i>0.2</i>	<i>ug/kg</i>
<i>m,p-Xylene</i>	<i>51.4</i>	<i>ug/kg</i>	<i>0.2</i>	<i>ug/kg</i>
<i>o-Xylene</i>	<i>896.5</i>	<i>ug/kg</i>	<i>0.2</i>	<i>ug/kg</i>
	<i>TOTAL</i>	<i>1025.3</i>		<i>ug/kg</i>

**Method** - SW-846 EPA Method 8020 Aromatic Volatile Organics by Gas Chromatography

Approved by: *[Signature]*  
Date: *7/12/96*

Giomi Gas Com C#1

9-3-96

AMECO

Sec 28, 30N, 9W, m

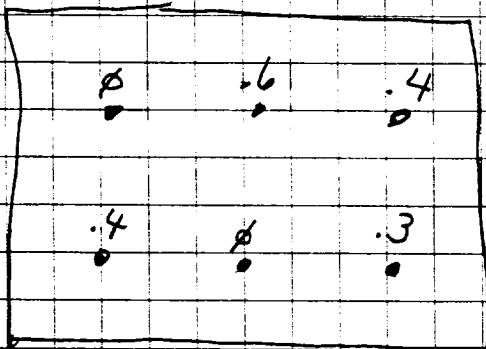
Land Farmed On-location

(386 yds.)

Composite Sample # 9609031540

6 ft. Comp.

Soil Vapor Head space = 16.9 ppm (PJO)



2"-12" depth

OFF: (505) 325-5667



LAB: (505) 325-1556

### *Diesel Range Organics*

Attn: *Denver Bearden*  
Company: *PNM Gas Services*  
Address: *603 W. Elm*  
City, State: *Farmington, NM 87401*

Date: *5-Sep-96*  
COC No.: *4988*  
Sample No. *11979*  
Job No. *2-1000*

Project Name: *PNM Gas Seivices - Giomi Gas Com C #1 Landfarm*  
Project Location: *9609031540; 6pt. Composite, 2"-12" depth*  
Sampled by: *GC* Date: *3-Sep-96* Time: *15:40*  
Analyzed by: *DC* Date: *5-Sep-96*  
Sample Matrix: *Soil*

### *Laboratory Analysis*

<i>Parameter</i>	<i>Result</i>	<i>Unit of Measure</i>	<i>Detection Limit</i>	<i>Unit of Measure</i>
<i>Diesel Range Organics (C10 - C28)</i>	<i>&lt;5.0</i>	<i>mg/kg</i>	<i>5.0</i>	<i>mg/kg</i>

### *Quality Assurance Report*

*DRO QC No.: 0489-QC*

#### *Calibration Check*

<i>Parameter</i>	<i>Method Blank</i>	<i>Unit of Measure</i>	<i>True Value</i>	<i>Analyzed Value</i>	<i>% Diff</i>	<i>Limit</i>
<i>Diesel Range (C10 - C28)</i>	<i>&lt;5.0</i>	<i>ppm</i>	<i>100</i>	<i>101</i>	<i>0.7</i>	<i>15%</i>

#### *Matrix Spike*

<i>Parameter</i>	<i>1 - Percent Recovered</i>	<i>2 - Percent Recovered</i>	<i>Limit</i>	<i>%RSD</i>	<i>Limit</i>
<i>Diesel Range (C10-C28)</i>	<i>98</i>	<i>114</i>	<i>(70-130)</i>	<i>11</i>	<i>20%</i>

**Method** - *SW-846 EPA Method 8015A mod. - Nonhalogenated Volatile Hydrocarbons by Gas Chromatography*

Approved by: *[Signature]*  
Date: *9/6/96*