

submitted in lieu of Form 3160-5

UNITED STATES
DEPARTMENT OF THE INTERIOR
BUREAU OF LAND MANAGEMENT

Sundry Notices and Reports on Wells

1. Type of Well GAS	5. Lease Number SF-080869
2. Name of Operator MERIDIAN OIL	6. If Indian, All. or Tribe Name
3. Address & Phone No. of Operator PO Box 4289, Farmington, NM 87499 (505) 326-9700	7. Unit Agreement Name
4. Location of Well, Footage, Sec., T, R, M 1050'FSL, 1600'FWL, Sec.25, T-30-N, R-11-W, NMPM	8. Well Name & Number Murphy B #1
	9. API Well No. 30-045-09114
	10. Field and Pool Basin Fruitland Coal/ Aztec Pictured Cliffs
	11. County and State San Juan Co, NM

12. CHECK APPROPRIATE BOX TO INDICATE NATURE OF NOTICE, REPORT, OTHER DATA

Type of Submission

Type of Action

<input checked="" type="checkbox"/> Notice of Intent	<input type="checkbox"/> Abandonment	<input type="checkbox"/> Change of Plans
<input type="checkbox"/> Subsequent Report	<input checked="" type="checkbox"/> Recompletion	<input type="checkbox"/> New Construction
<input type="checkbox"/> Final Abandonment	<input type="checkbox"/> Plugging Back	<input type="checkbox"/> Non-Routine Fracturing
	<input type="checkbox"/> Casing Repair	<input type="checkbox"/> Water Shut off
	<input type="checkbox"/> Altering Casing	<input type="checkbox"/> Conversion to Injection
	<input type="checkbox"/> Other -	

13. Describe Proposed or Completed Operations

It is intended to recomplete the Fruitland Coal zone of the subject well by perforating and fracture stimulating according to the attached procedure and wellbore diagram. Production from the Pictured Cliffs and Fruitland Coal will then be commingled. Application is being made to the New Mexico Oil Conservation Division for commingling.

RECEIVED
DEC - 8 1994
OIL CON. DIV.
DIST. 3

14. I hereby certify that the foregoing is true and correct.

Signed *Regina Bradford* (LJB2) Title Regulatory Affairs Date 11/22/94

(This space for Federal or State Office use)

APPROVED BY _____ Title _____ Date _____

CONDITION OF APPROVAL, if any:

APPROVED
DEC 01 1994
DISTRICT MANAGER

District I
PO Box 1980, Hobbs, NM 88241-1980
District II
PO Drawer DD, Artesia, NM 88211-0719
District III
1000 Rio Brazos Rd., Aztec, NM 87410
District IV
PO Box 2088, Santa Fe, NM 87504-2088

State of New Mexico
Energy, Minerals & Natural Resources Department

OIL CONSERVATION DIVISION
PO Box 2088
Santa Fe, NM 87504-2088

Form C-10
Revised February 21, 1994
Instructions on back
Submit to Appropriate District Office
State Lease - 4 Copies
Fee Lease - 3 Copies

☐ AMENDED REPORT

WELL LOCATION AND ACREAGE DEDICATION PLAT

API Number 30-045-09114		Pool Code 71629/71280	Pool Name Basin Fruitland Coal/Aztec Pictured Cliffs
Property Code 7336	Property Name MURPHY B		Well Number 1
GRID No. 14538	Operator Name MERIDIAN OIL INC.		Elevation 5948'

10 Surface Location

UL or lot no.	Section	Township	Range	Lot Idn	Feet from the	North/South line	Feet from the	East/West line	County
N	25	30N	11W		1050	SOUTH	1600	WEST	S.J.

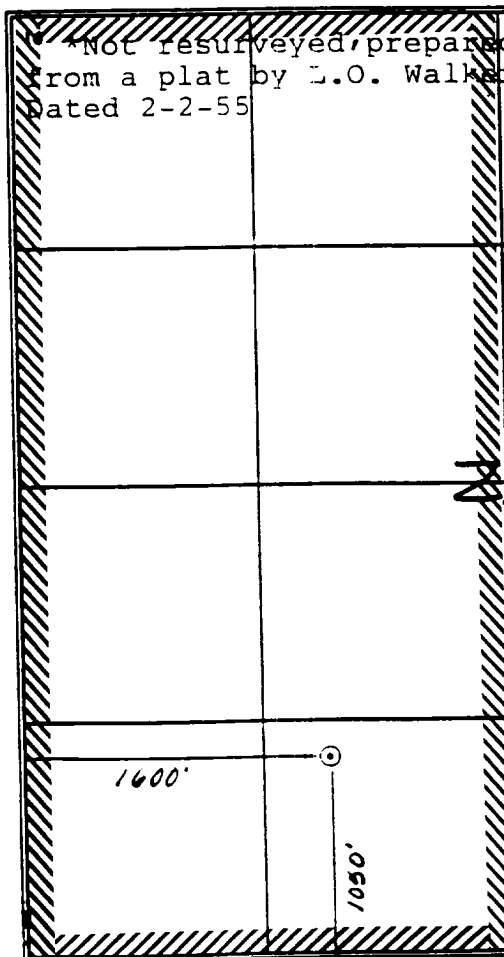
11 Bottom Hole Location If Different From Surface

UL or lot no.	Section	Township	Range	Lot Idn	Feet from the	North/South line	Feet from the	East/West line	County

12 Dedicated Acres 13 Joint or Infill 14 Consolidation Code 15 Order No.

W/320

NO ALLOWABLE WILL BE ASSIGNED TO THIS COMPLETION UNTIL ALL INTERESTS HAVE BEEN CONSOLIDATED OR A NON-STANDARD UNIT HAS BEEN APPROVED BY THE DIVISION

<p>*Not resurveyed, prepared from a plat by L.O. Walker dated 2-2-55</p> 	<p>RECEIVED DEC - 8 1994 OIL CON. DIV. DIST. 3</p>	<p>17 OPERATOR CERTIFICATION</p> <p>I hereby certify that the information contained herein is true and complete to the best of my knowledge and belief.</p> <p><i>Peggy Bradfield</i> Signature</p> <p>Peggy Bradfield Printed Name</p> <p>Regulatory Affairs Title</p> <p>11-22-94 Date</p>
		<p>18 SURVEYOR CERTIFICATION</p> <p>I hereby certify that the well location shown on this plat was plotted from field notes of actual surveys made by or under my supervision, and that the same is true and correct to the best of my belief.</p> <p>11-17-94 Date of Survey</p> <p><i>HERNAN C. EDWARDS</i> Signature and Seal of Professional Surveyor</p> <p>HERNAN C. EDWARDS 8857 6857 Professional Surveyor</p> <p>Certificate Number</p>

MURPHY B #1
SW/4 Section 25 T30N R11W
Recommended Completion Procedure

1. Test rig anchors and repair if necessary. Install 1-400 bbl frac tank on location and fill with 2% KCl water. Filter all water to 25 microns. Heat water as required by weather.
2. MOL and RU. Comply to all NMOCD, BLM and MOI rules and regulations. Held safety meeting. ND wellhead. NU BOP. Test operation of rams. NU two relief lines.
3. TOOH laying down 2395' of 1" tubing, tally and inspect.
4. TIH with 2-3/8" tubing and 4-3/4" bit and and clean out to TD at 2409'. TOOH.
5. TIH with 2-3/8" tubing, 5-1/2" casing scraper and 4-3/4" bit and and clean out to 2351'. Load hole with 2% KCl water. TOOH.
6. RU and RIH with CNL-CCL-GR and log from 2351' to 351'.
7. RIH and wireline set 5-1/2" CIBP at 2348'. Correlate with CNL-CCL-GR to ensure CIBP is set between PC and basal FTC. Load hole with 2% KCl water. TOOH.
8. Run CBL from CIBP at 2348' to surface. If CBL appears inadequate, re-run log with 500 psi surface pressure. If bond still appears unacceptable, contact production engineering. Send copy of CBL to production engineering and drilling.

***** LOWER COAL *****

9. TIH with 5-1/2" fullbore packer and 2-3/8" tubing and set packer at 2209'. Load hole with 2% KCl water and test CIBP and casing to 3500 psi for 15 minutes. Test tubing / casing annulus to 500 psi for 15 minutes. Equalize pressure and unseat packer. TOOH.
10. RU wireline and perforate the following coal interval with a Select Fire 3-1/8" HSC with 10.0 gram charges, 0.30 holes at 2 SPF (correlate depths to CNL-CCL-GR log). Prior to perforating review with production engineering.

2259' - 2262'
2290' - 2297'
2331' - 2334'
2341' - 2344'

Total: 16 feet: 32 holes

11. TIH with 5-1/2" fullbore packer on 2-7/8" buttress tubing frac string and set packer at 2209'.

MURPHY B #1
SW/4 Section 25 T30N R11W
Recommended Completion Procedure
Page 2

12. RU treatment company for frac. Hold safety meeting with all personnel. Pressure test surface lines to 5000 psi. Pump 200 gals. of 15% HCl ahead of frac. Fracture treat procedure will be available prior to treatment. Tag sand with 0.4 mCi/1000# of Ir-192 tracer. Flush with 11 bbls of 2% KCl water. **MAXIMUM PRESSURE IS LIMITED TO 3500 PSI!** Monitor backside and braden head pressures during frac. Monitor bottomhole and surface treating pressure, rate, foam quality and sand concentration with computer van. Frac during daylight only.
13. SI well for 2 hours for gel break.
14. After gel break, open well through choke manifold and monitor flow. Flow at 20 bbls/hr. or less if sand is observed.
15. When well ceases to flow, TOOH with 2-7/8" tubing and packer.
16. TIH with 2-3/8" tubing and notched collar and clean out to 2348'. TOOH.
17. TIH and set 5-1/2" RBP at 2236' with wireline.
18. Refill 400 bbl frac tank with 2% KCl water and filter to 25 microns. Heat water as required by weather.

***** UPPER COAL *****

19. TIH with 5-1/2" fullbore packer and 2-3/8" tubing and set packer at 2114'. Load hole with 2% KCl water and test RBP and casing to 3500 psi for 15 minutes. Test tubing / casing annulus to 500 psi for 15 minutes. Equalize pressure and unseat packer. TOOH.
20. RU wireline and perforate the following coal interval with a Select Fire 3-1/8" HSC with 10.0 gram charges, 0.30 holes at 2 SPF (correlate depths to CNL-CCL-GR log). Prior to perforating, review with production engineering.

2164' - 2171'
2179' - 2184'
2211' - 2216'

Total: 17 feet: 34 holes

21. TIH with 5-1/2" fullbore packer on 2-7/8" buttress tubing frac string and set packer at 2114'.
22. RU treatment company for frac. Hold safety meeting with all personnel. Pressure test surface lines to 5000 psi. Fracture treat procedure will be available prior to treatment. Tag sand with 0.4 mCi/1000# of Ir-192 tracer. Flush with 10 bbls of 2% KCl water. **MAXIMUM PRESSURE IS LIMITED TO 3500 PSI!** Monitor backside and braden head pressures during frac. Monitor bottomhole and surface treating pressure, rate, foam quality and sand concentration with computer van. Frac during daylight only.

MURPHY B #1
SW/4 Section 25 T30N R11W
Recommended Completion Procedure
Page 3

23. SI well for 2 hours for gel break.
24. After gel break, open well through choke manifold and monitor flow. Flow at 20 bbls/hr. or less if sand is observed.
25. When well ceases to flow, TOOH with 2-7/8" tubing and packer.
26. TIH with 2-3/8" tubing and retrieving head and clean out upper zone until sand flow stops. Take Pitot gauge before releasing BP. Release RBP set at 2236' and TOOH.
27. TIH with 2-3/8" tubing and notched collar and clean out coal until sand flow stops. Take Pitot gauge. TOOH.
28. RU wireline and run After - Frac log from 2348' to top of tracer activity.
29. TIH with 2328' of 2-3/8" tubing with standard seating nipple one joint off bottom and pump-off plug on bottom. Land tubing string.
30. ND BOP and NU independent wellhead. Pump off plug. Take final Pitot gauge. Rig down and release rig.
31. Will move back on location and drill CIBP set at 2348' when appropriate regulatory approval is received.

Approve:

P. W. Bent

VENDORS:

Wireline:	Petro	325-6669
Fracturing:	Western	327-6222
R.A. tagging	Protechnics	326-7133

LJB

Pertinent Data Sheet - Murphy B #1

Location: 1050' FSL, 1600' FWL, Unit N, Section 25, T30N, R11W, San Juan County, New Mexico

Field: Aztec Pictured Cliffs

Elevation: 6947' GR

TD: 2409'

PBTD: 2409'

Spud Date: 02-27-55

Completed: 03-24-55

DP #: 49096A

Casing Record:

<u>Hole Size</u>	<u>Csg Size</u>	<u>Wt. & Grade</u>	<u>Depth Set</u>	<u>Cement</u>	<u>Top/Cement</u>
13 3/4"	9 5/8"	25.4# SW	133'	100 sxs	Circ/Surface
7 7/8"	5 1/2"	15.5# J-55	2351'	150 sxs	TOC @ 1190' TS

Tubing Record:

<u>Tbg Size</u>	<u>Wt. & Grade</u>	<u>Depth Set</u>
1"	1.68# Std Blk	2395'

Formation Tops:

Ojo Alamo:	1014'
Kirtland:	1124'
Fruitland:	1988'
Pictured Cliffs:	2346'
Lewis:	2396'

Logging Record: ES, ML, GR, IND, TS

Stimulation:

Sand-oil frac from 2352' to 2409' w/14,600# sand & 10,900 gal oil.
Flush w/2,400 gal.

Workover History:

Production History:

Transporter: EPNG

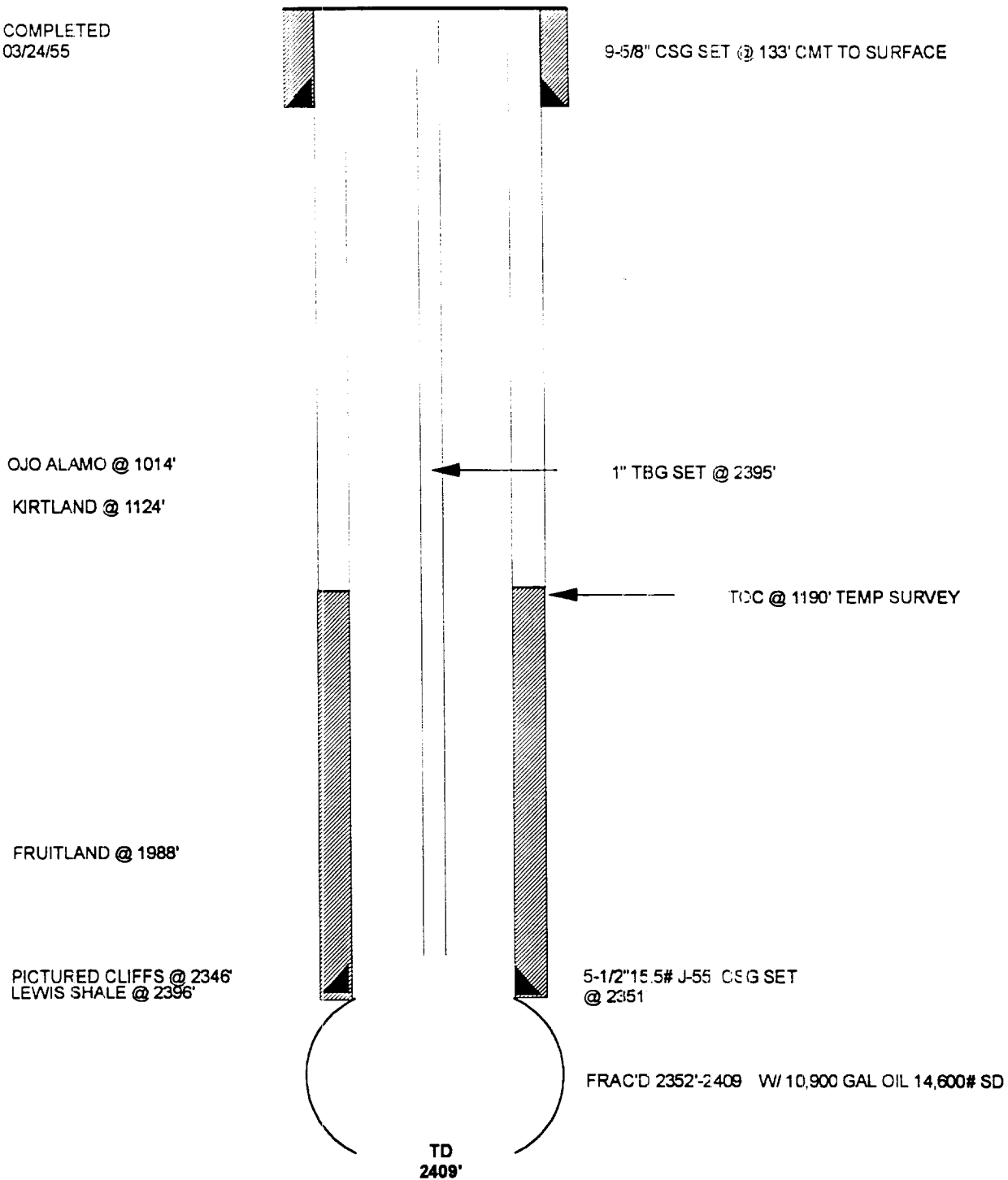
MURPHY B #1 49096A

CURRENT

AZTEC PICTURED CLIFFS (GAS)

UNIT N, SEC 25, T30N, R11W, SAN JUAN COUNTY, NM

COMPLETED
03/24/55



MURPHY B #1 49096A

PROPOSED

AZTEC PICTURED CLIFFS (GAS)

UNIT N, SEC 25, T30N, R11W, SAN JUAN COUNTY, NM

COMPLETED
03/24/55

