

COMPANY EL PASO NATURAL GAS COMPANY

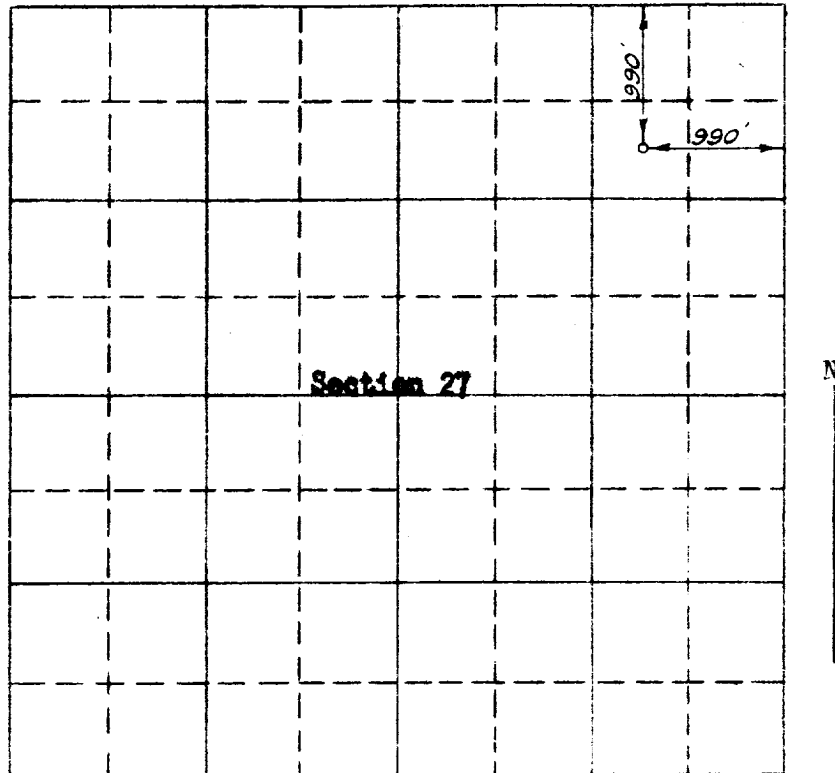
Well Name & No. Gartner No. 6 Lease No. ~~5882.86~~ Fee

Location 990 feet from the North line 990 feet from the East line.

Being in The NE⁴ of the NE⁴

Sec. 27, T 30N., R 8W., N.M.P.M., San Juan County, New Mexico

Ground Elevation 5882.86



Scale -- 4 inches equals 1 mile

Surveyed May 24, 19 52

This is to certify that the above plat was prepared from field notes of actual surveys made by me or under my supervision and that the same are true and correct to the best of my knowledge and belief.

C. O. Walker

Registered Professional
Engineer and Land Surveyor.

Seal:

Farmington, New Mexico

OIL CONSERVATION COMMISSION
 AZTEC DISTRICT OFFICE

No. Copies Received 5

DISTRIBUTION

	NO. FURNISHED	
Operator	1	
Santa Fe	1	
Proration Office		
State Land Office		
U. S. G. S.	2	
Transporter		
File	1	✓