

NUMBER OF COPIES RECEIVED		6
DISTRIBUTION		
SANTA FE	1	
FILE		
U.S.G.S.	2	
LAND OFFICE		
TRANSPORTER		
OIL GAS		
PRODUCTION OFFICE		
OPERATOR	2	

NEW MEXICO OIL CONSERVATION COMMISSION
Santa Fe, New Mexico

Form C-101
Revised (12/1/55)

NOTICE OF INTENTION TO DRILL

30-045-09921

Notice must be given to the District Office of the Oil Conservation Commission and approval obtained before drilling or recompletion begins. If changes in the proposed plan are considered advisable, a copy of this notice showing such changes will be returned to the sender. Submit this notice in QUINTUPLICATE. One copy will be returned following approval. See additional instructions in Rules and Regulations of the Commission.

If State Land submit 6 Copies Attach Form G-128 in triplicate to first 3 copies of form C-101

207 Petr. Club Plaza, Farmin gton, New Mexico

July 9, 1962

(Place)

(Date)

OIL CONSERVATION COMMISSION
SANTA FE, NEW MEXICO

6-OCC, 2-Delhi-Taylor, 2-SUG, 1-Aspen, 1-D, 2-F

Gentlemen:

You are hereby notified that it is our intention to commence the Drilling of a well to be known as
Southwest Production Company

(Company, or Operator)

Rhoda Abrams

(Lease)

Well No. **2**, in **H** (Unit) The well is

located **1795** feet from the **North** line and **960** feet from the **East** line of Section **5**, T. **30N**, R. **11W**, NMPM.

(GIVE LOCATION FROM SECTION LINE) **Basin Dakota** Pool, **San Juan** County

If State Land the Oil and Gas Lease is No.

If patented land the owner is **Rhoda Abrams**

Address

We propose to drill well with drilling equipment as follows: **Rotary**

The status of plugging bond is **\$10,000.00 Blanket Bond in effect.**

Drilling Contractor **Aspen Drilling Company**
P. O. Box 2060
Farmington, New Mexico

We intend to complete this well in the **Dakota** formation at an approximate depth of **6965** feet.

CASING PROGRAM

We propose to use the following strings of Casing and to cement them as indicated:

Size of Hole	Size of Casing	Weight per Foot	New or Second Hand	Depth	Sacks Cement
12 1/4"	8 5/8"	24.00#	New	325	165
7 7/8"	4 1/2"	10.50#	"	T. D.	300 sx or enough to cover the Gallup Formation.

If changes in the above plans become advisable we will notify you immediately.

ADDITIONAL INFORMATION (If recompletion give full details of proposed plan of work.)

DV tools will be placed for the protection of the Pictured Cliffs & Mesaverde formations.

Approved *July 16, 1962*
Except as follows:
Subject to approval of communitization agreements by all working interests in the unit or approval of non-standard unit.

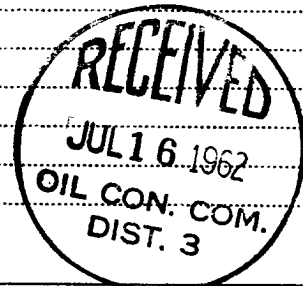
Sincerely yours,
Southwest Production Company

Original signed by *Carl W. Smith* (Company or Operator)
By **Carl W. Smith**

Position **Superintendent**
Send Communications regarding well to
Name **Southwest Production Company**
Address **207 Petr. Club Plaza, Farmington, N. M.**

OIL CONSERVATION COMMISSION

By *Carl R. Hendrick*



NEW MEXICO OIL CONSERVATION COMMISSION

Well Location and Acreage Dedication Plat

Section A.

Date July 13, 1962

Operator SOUTHWEST PRODUCTION COMPANY Lease Rhoda Abrams
 Well No. 2 Unit Letter G Section 5 Township 30 NORTH Range 11 WEST, NMPM
 Located 1795 Feet From the NORTH Line, 960 Feet From the EAST Line
 County SAN JUAN G. L. Elevation 5765.0 Dedicated Acreage N/320 Acres
 Name of Producing Formation Dakota Pool Basin Dakota

1. Is the Operator the only owner in the dedicated acreage outlined on the plat below?
 Yes No
2. If the answer to question one is "no", have the interests of all the owners been consolidated by communitization agreement or otherwise? Yes No . If answer is "yes", Type of Consolidation.
3. If the answer to question two is "no", list all the owners and their respective interests below:

Owner

Land Description

Delhi-Taylor Oil CorporationN/2 NW/4(80 acres)Southern Union Gas Company1/2 NW/4 W/2 NE/4 & NE/4 NE/4(200 acres)

JUL 16 1962

OIL CON. COM.

DIST. 3

Note: All distances must be from outer boundaries of section.

Section B.

This is to certify that the information
 in Section A above is true and complete
 to the best of my knowledge and belief.

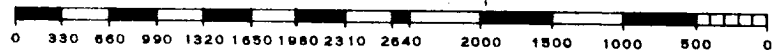
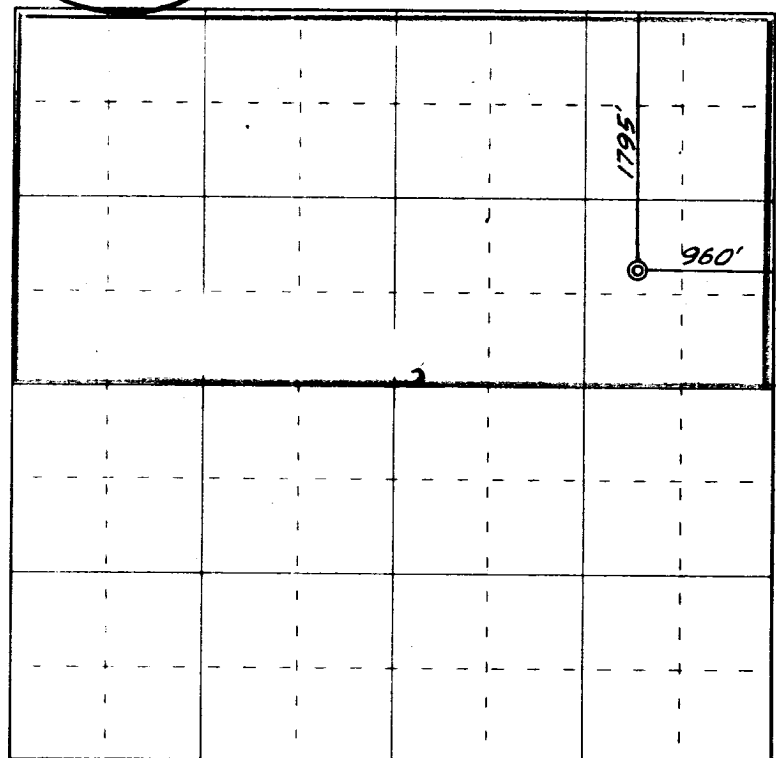
Southwest Production Company

(Operator) Original signed by
Carl W. Smith

(Representative)
207 Petr. Club Plaza

(Address)
Farmington, New Mexico

Ref: GLO plat dated 7 April 1881



Scale 4 inches equal 1 mile

This is to certify that the above plat was prepared from field notes of actual surveys
 made by me or under my supervision and that the same are true and correct to the best
 of my knowledge and belief.

Date Surveyed 6 July 1962

James P. Lease
 Registered Professional Engineer and/or Land Surveyor
 James P. Lease N. Mex. Reg. No. 1463

(Seal)

Farmington, New Mexico