

UNITED STATES
DEPARTMENT OF THE INTERIOR
GEOLOGICAL SURVEY

APPLICATION FOR PERMIT TO DRILL, DEEPEN, OR PLUG BACK

1. TYPE OF WORK

DRILL ☒

DEEPEN ☐

PLUG BACK ☐

2. TYPE OF WELL

OIL
WELL ☐

GAS
WELL ☒

OTHER ☐

SINGLE
ZONE ☒

MULTIPLE
ZONE ☐

3. NAME OF OPERATOR

Blackwood and Nichols Co., Ltd.

4. ADDRESS OF OPERATOR

P.O. Box 1237, Durango, CO 81302-1237

5. LOCATION OF WELL (Report location clearly and in accordance with any State requirements.)*

At surface
1840' FSL - 1015' FWL

At proposed prod. zone

Same

6. DISTANCE IN MILES AND DIRECTION FROM NEAREST TOWN OR POST OFFICE*

18 miles NE of Blanco, New Mexico

7. DISTANCE FROM PROPOSED*

LOCATION TO NEAREST
PROPERTY OR LEASE LINE, FT.
(Also to nearest drig. unit line, if any) 1015'

8. NO. OF ACRES IN LEASE

2560.00

9. NO. OF ACRES ASSIGNED

TO THIS WELL
320

10. DISTANCE FROM PROPOSED LOCATION*
TO NEAREST WELL, DRILLING, COMPLETED,
OR APPLIED FOR, ON THIS LEASE, FT. 150'

11. PROPOSED DEPTH

3020'

12. ROTARY OR CABLE TOOLS

Rotary

13. ELEVATIONS (Show whether DF, RT, GR, etc.)

6122 (U.G.)

14. APPROX. DATE WORK WILL START*

April 1, 1990

15. PROPOSED CASING AND CEMENTING PROGRAM

SIZE OF HOLE	SIZE OF CASING	WEIGHT PER FOOT	SETTING DEPTH	QUANTITY OF CEMENT
12 1/4"	9 5/8"	36#	300'	295 cuft/circulate to surface
8 3/4"	7"	23#	2800'	940 cuft/circulate to surface
6 1/4"	5 1/2"	17#	2700'-3020	39 cuft/circulate to liner top

Propose to spud in the San Jose formation. Will drill a 12 1/4" hole to a TD of 300' Run surface casing and cement with cement returns to surface. WOC 12 hours. Test to 600 psi/30 mins. Drill a 8 3/4" hole to a TD of 2800' using fresh water mud. No poisonous gases or abnormal pressures are anticipated. Run intermediate casing and cement with cement returns to surface. WOC 12 hours. Test to 1500 psi/30 mins. Drill a 6 1/4" hole to a Td of 3020' using water and air. Run a mud logging unit while drilling this interval. Run the production liner. The liner will be cemented if the wells natural flow capacity indicates the need for fracture stimulation.

Surface ownership is Bureau of Land Management

"Approval of this action does

not warrant that the applicant is to deepen or plug back, give data on present production and proposed new productive zone. If proposal is to drill or deepen directionally, give pertinent data on subsurface locations and measurements. Give blowout holes legal or equitable rights

or title to this lease."

SIGNED

William F. Clark

TITLE

Operations Manager

DATE

5 Mar 90

(This space for Federal or State office use)

PERMIT NO.

APPROVAL DATE

APPROVED BY

TITLE

CONDITIONS OF APPROVAL, IF ANY:

AS A

APR 03 1990

AREA MANAGER

RECEIVED
JUN 1 1961
OIL CONTROL DIV.
DIST. 3

RECEIVED
JUN 1 1961
OIL CONTROL DIV.
DIST. 3

**NEW MEXICO OIL CONSERVATION COMMISSION
WELL LOCATION AND ACREAGE DEDICATION PLAT**

Form C-102
Supersedes C-128
Effective 1-1-85

All distances must be from the outer boundaries of the Section.

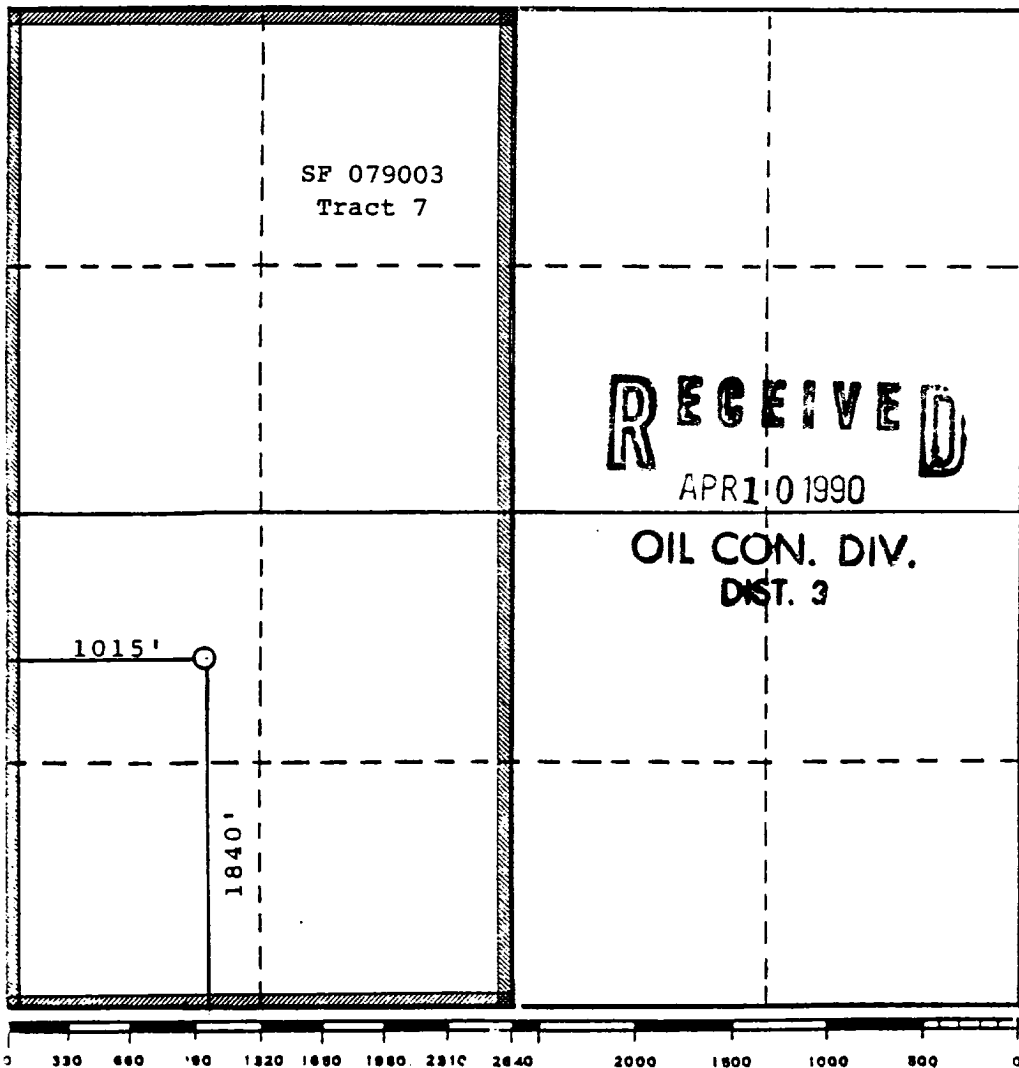
Operator BLACKWOOD & NICHOLS CO., LTD.			Lease NORTHEAST BLANCO UNIT		Well No. 487
Unit Letter L	Section 35	Township 31 North	Range 7 West	County San Juan County	
Actual Footage Location of Well: 1840 feet from the south line and 1015 feet from the west line					
Ground Level Elev: 6122 (U.G.)	Producing Formation Fruitland Coal		Pool Basin Fruitland Coal	Dedicated Acreage 320	

1. Outline the acreage dedicated to the subject well by colored pencil or hachure marks on the plat below.
2. If more than one lease is dedicated to the well, outline each and identify the ownership thereof (both as to working interest and royalty).
3. If more than one lease of different ownership is dedicated to the well, have the interests of all owners been consolidated by communitization, unitization, force-pooling, etc?

☒ Yes ☐ No If answer is "yes," type of consolidation Unitization

If answer is "no," list the owners and tract descriptions which have actually been consolidated. (Use reverse side of this form if necessary.) _____

No allowable will be assigned to the well until all interests have been consolidated (by communitization, unitization, forced-pooling, or otherwise) or until a non-standard unit, eliminating such interests, has been approved by the Commission.



CERTIFICATION

I hereby certify that the information contained herein is true and complete to the best of my knowledge and belief.

William F. Clark

Name

William F. Clark

Position

Operations Manager

Company

Blackwood & Nichols Co.

Date

December 7, 1989

I hereby certify that the well location shown on this plat was plotted from field notes of actual surveys made by me or under my supervision, and that the same is true and correct to the best of my knowledge and belief.

Date Surveyed

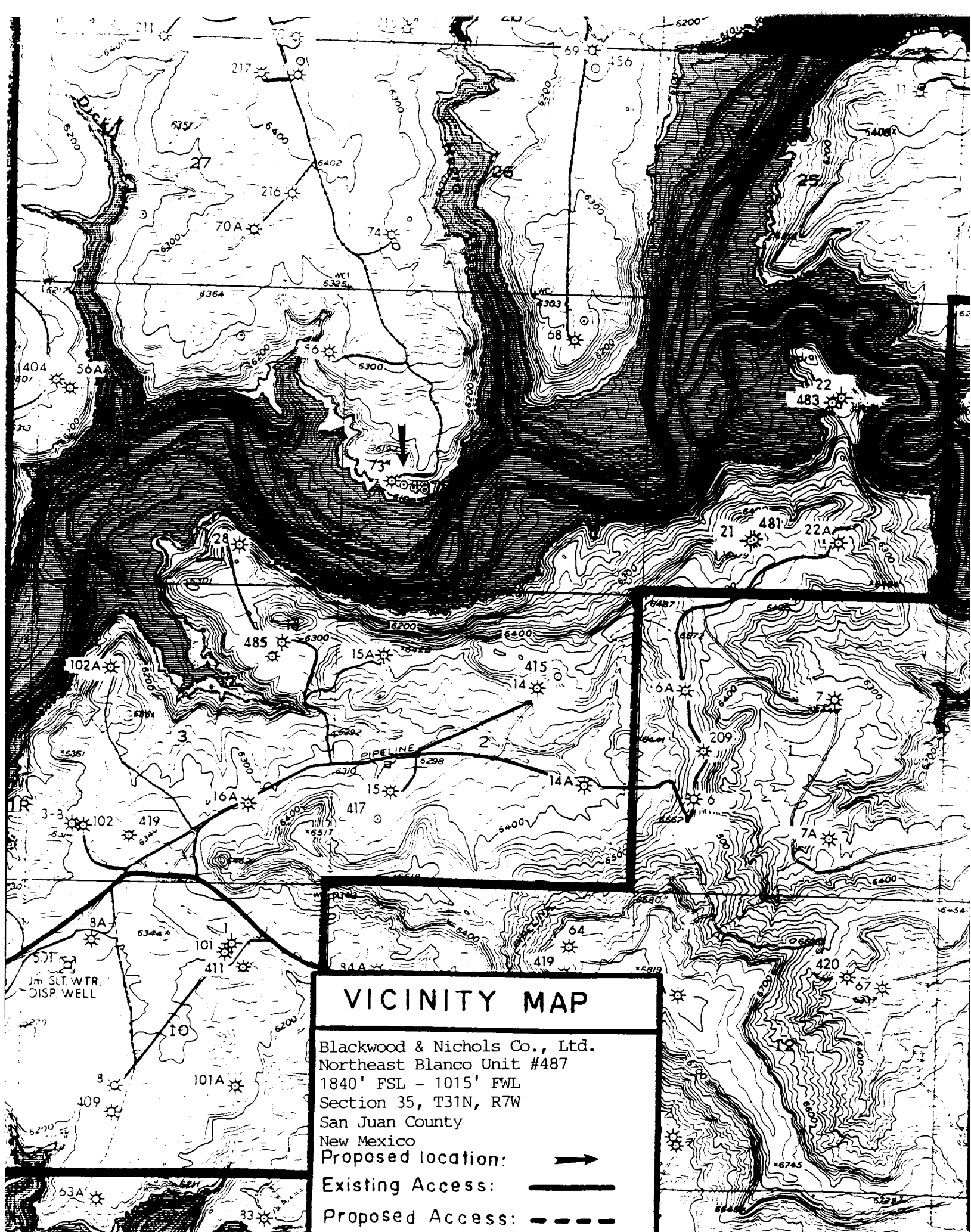
November 11, 1989

Registered Professional Engineer and/or Land Surveyor



Allison L. Kroeger
Allison L. Kroeger, PLS

Certificate No.

7922



VICINITY MAP

Blackwood & Nichols Co., Ltd.
Northeast Blanco Unit #487
1840' FSL - 1015' FWL
Section 35, T31N, R7W
San Juan County
New Mexico
Proposed location: 
Existing Access: 
Proposed Access: 