

**UNITED STATES  
DEPARTMENT OF THE INTERIOR  
BUREAU OF LAND MANAGEMENT**

**APPLICATION FOR PERMIT TO DRILL OR DEEPEN**

5. LEASE DESIGNATION AND SERIAL NO.  
SF-078996

6. IF INDIAN, ALLOTTEE OR TRIBE NAME

7. UNIT AGREEMENT NAME  
San Juan 32-7 Unit

8. FARM OR LEASE NAME, WELL NO.  
SJ 32-7 Unit 228 9260

9. API WELL NO.  
30-045-24545

10. FIELD AND POOL, OR WILDCAT  
Basin Fruitland Coal 71629

11. SEC., T., R., M., OR BLK. AND SURVEY OR AREA  
G  
Sec. 7, T31N, R7W

12. COUNTY OR PARISH  
San Juan,

13. STATE  
NM

14. DISTANCE IN MILES AND DIRECTION FROM NEAREST TOWN OR POST OFFICE\*  
Approx. 20 miles east of Bondad, CO

15. DISTANCE FROM PROPOSED\* LOCATION TO NEAREST PROPERTY OR LEASE LINE, FT. (Also to nearest drlg. unit line, if any)  
600' (#79)

16. NO. OF ACRES IN LEASE  
2537.37

17. NO. OF ACRES ASSIGNED TO THIS WELL  
317.23 acres

18. DISTANCE FROM PROPOSED LOCATION\* TO NEAREST WELL, DRILLING, COMPLETED, OR APPLIED FOR, ON THIS LEASE, FT.  
3400'

19. PROPOSED DEPTH  
3400'

20. ROTARY OR CABLE TOOLS  
rotary

21. ELEVATIONS (Show whether DF, RT, GR, etc.)  
6582' unprepared ground level

22. APPROX. DATE WORK WILL START\*  
3 Qtr 1997

**This action is subject to technical and procedural review pursuant to 43 CFR 3165.3 and appeal pursuant to 43 CFR 3165.4.**

23. PROPOSED CASING AND CEMENTING PROGRAM

SIZE OF HOLE	GRADE, SIZE OF CASING	WEIGHT PER FOOT	SETTING DEPTH	QUANTITY OF CEMENT
12-1/4"	9-5/8"	36#, J-55	350'	185 sx C1 B (222 cu ft)
8-3/4"	7"	20# J/K-55	3175'	L-450 sx 65/35 C1 B POZ (994.5cf)
6-1/2"	5-1/2"	15.5#	@ 3400'	T-150 C1 B (180 cu ft)

**\*\* DRILLING OPERATIONS AUTHORIZED ARE SUBJECT TO COMPLIANCE WITH ATTACHED "GENERAL REQUIREMENTS"**

\*\* If the coal is clefted a 5-1/2" 15.5# J-55 liner will be run in the open hole without being cemented.

If the coal is not clefted, the well will be stimulated and open completed.

BOP equipment and mud program are attached.

See attached WFS pipeline survey for ROW footages.

**RECEIVED  
FEB 17 1998**

**OIL CON. DIV.  
DIST. 3**

97 JUL 10 PM 3:02  
RECEIVED  
BLM

IN ABOVE SPACE DESCRIBE PROPOSED PROGRAM: If proposal is to deepen, give data on present production zone and proposed zone. If proposal is to drill or deepen directionally, give pertinent data on subsurface locations and measured and true vertical depths. Give blowout prevention program, if any.

24. SIGNED Patsy Chester TITLE Regulatory Assistant DATE 7-9-97

(This space for Federal or State office use)

PERMIT NO. \_\_\_\_\_ APPROVAL DATE FEB 11 1998

Application approval does not warrant or certify that the applicant holds legal or equitable title to those rights in the subject lease which would entitle the applicant to conduct operations thereon.

CONDITIONS OF APPROVAL, IF ANY:  
R-9305 @ Hold C-104 FOR NSL @  
/s/ Duane W. Spencer **FEB 11 1998**

APPROVED BY \_\_\_\_\_ TITLE \_\_\_\_\_ DATE \_\_\_\_\_

**\*See Instructions On Reverse Side**

RECEIVED  
 DISTRICT I BLM  
 P.O. Box 1980, Hobbs, NM 88241-1980

JUL 15 AM 3 15  
 DISTRICT II  
 P.O. Drawer DD, Artesia, NM 88211-0719

DISTRICT III  
 1000 So Brazos Rd., Artec, N.M. 87410

DISTRICT IV  
 PO Box 2088, Santa Fe, NM 87504-2088

State of New Mexico  
 Energy, Minerals & Natural Resources Department

Form C-102  
 Revised February 21, 1994  
 Instructions on back  
 Submit to Appropriate District Office  
 State Lease - 4 Copies  
 Fee Lease - 3 Copies

OIL CONSERVATION DIVISION  
 P.O. Box 2088  
 Santa Fe, NM 87504-2088

AMENDED REPORT

WELL LOCATION AND ACREAGE DEDICATION PLAT

*API Number 30-045-29545		*Pool Code 71629	*Pool Name Basin Fruitland Coal
*Property Code 009260	*Property Name San Juan 32-7 Unit		*Well Number 228
*OGRID No. 017654	*Operator Name Phillips Petroleum CO.		*Elevation 6582

<sup>10</sup> Surface Location

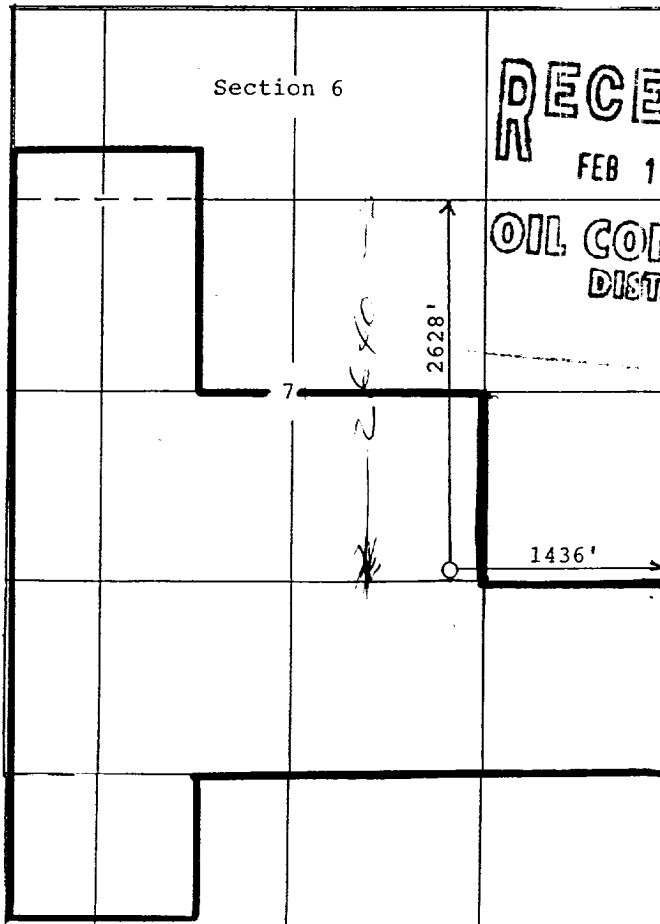
UL or lot no.	Section	Township	Range	Lot km	Feet from the	North/South line	Feet from the	East/West line	County
G	7	31 N	7 W		2628	North	1436	East	San Juan

<sup>11</sup> Bottom Hole Location If Different From Surface

UL or lot no.	Section	Township	Range	Lot km	Feet from the	North/South line	Feet from the	East/West line	County

<sup>12</sup> Dedicated Acres 317.23	<sup>13</sup> Joint or Infill Y	<sup>14</sup> Consolidation Code U	<sup>15</sup> Order No.
---	------------------------------------	---------------------------------------	-------------------------

NO ALLOWABLE WILL BE ASSIGNED TO THIS COMPLETION UNTIL ALL INTERESTS HAVE BEEN CONSOLIDATED OR A NON-STANDARD UNIT HAS BEEN APPROVED BY THE DIVISION



RECEIVED  
 FEB 17 1993  
 OIL CON. DIV.  
 DIST. 3

<sup>17</sup> OPERATOR CERTIFICATION

I hereby certify that the information contained herein is true and complete to the best of my knowledge and belief

Signature: W. D. Jaap  
 Printed Name: W. D. Jaap  
 Title: Operations Support Dir.  
 Date: 7-14-97

<sup>18</sup> SURVEYOR CERTIFICATION

I hereby certify that the well location shown on this plat was plotted from field notes of actual surveys made by me or under my supervision, and that the same is true and correct to the best of my knowledge and belief

Date of Survey: 6-17-97  
 Signature: [Signature]  
 Seal of Professional Surveyor  
 8894

DISTRICT I  
P.O. Box 1980, Hobbs, N.M. 88241-1980

DISTRICT II  
P.O. Drawer DD, Artesia, N.M. 88211-0719

DISTRICT III  
1000 Rio Brazos Rd., Artec, N.M. 87410

DISTRICT IV  
PO Box 2088, Santa Fe, NM 87504-2088

State of New Mexico  
Energy, Minerals & Natural Resources Department

OIL CONSERVATION DIVISION

P.O. Box 2088  
Santa Fe, NM 87504-2088

RECEIVED  
BLM  
97 JUL 10 PM 3:02  
070 FARMINGTON, NM

Form C-102  
Revised February 21, 1994  
Instructions on back  
Submit to Appropriate District Office  
State Lease - 4 Copies  
Fee Lease - 3 Copies

AMENDED REPORT

WELL LOCATION AND ACREAGE DEDICATION PLAT

*API Number		*Pool Code	*Pool Name
		71629	Basin Fruitland Coal
*Property Code	*Property Name		*Well Number
009260	San Juan 32-7 Unit		228
*OGRID No.	*Operator Name		*Elevation
017654	Phillips Petroleum CO.		6582

<sup>10</sup> Surface Location

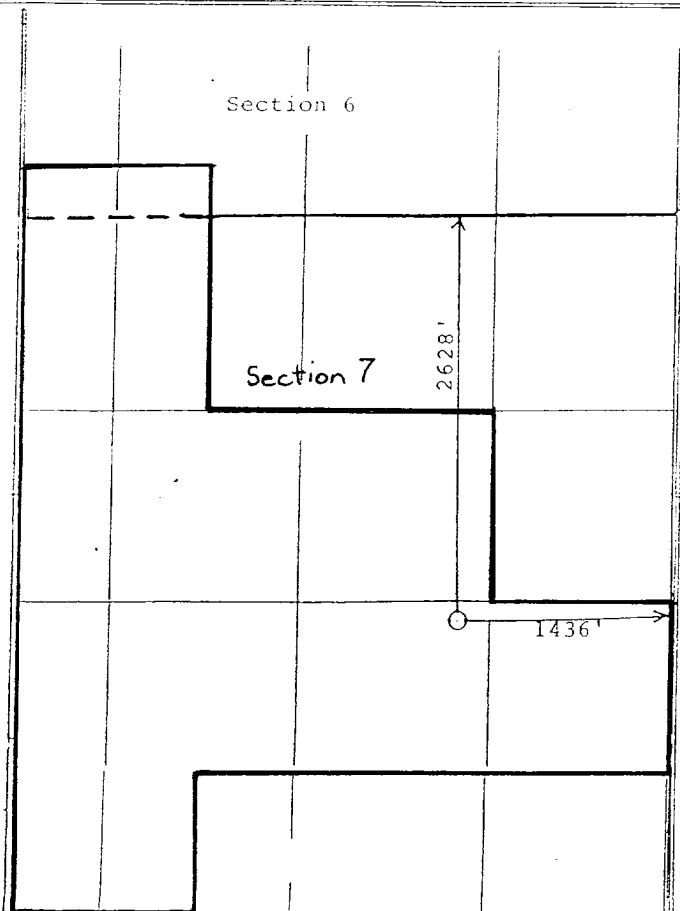
UL or lot no.	Section	Township	Range	Lot Idn	Feet from the	North/South line	Feet from the	East/West line	County
J	7	31 N	7 W		2628	North	1436	East	San Juan

<sup>11</sup> Bottom Hole Location If Different From Surface

UL or lot no.	Section	Township	Range	Lot Idn	Feet from the	North/South line	Feet from the	East/West line	County
J									

<sup>12</sup> Dedicated Acres	<sup>13</sup> Joint or Infill	<sup>14</sup> Consolidation Code	<sup>15</sup> Order No.
317.23	Y	U	

NO ALLOWABLE WILL BE ASSIGNED TO THIS COMPLETION UNTIL ALL INTERESTS HAVE BEEN CONSOLIDATED OR A NON-STANDARD UNIT HAS BEEN APPROVED BY THE DIVISION



<sup>17</sup> OPERATOR CERTIFICATION

I hereby certify that the information contained herein is true and complete to the best of my knowledge and belief.

*W.D. Jaap*  
Signature  
W. D. Jaap  
Printed Name  
Operations & Support Dir.  
Title  
7-9-97  
Date

<sup>18</sup> SURVEYOR CERTIFICATION

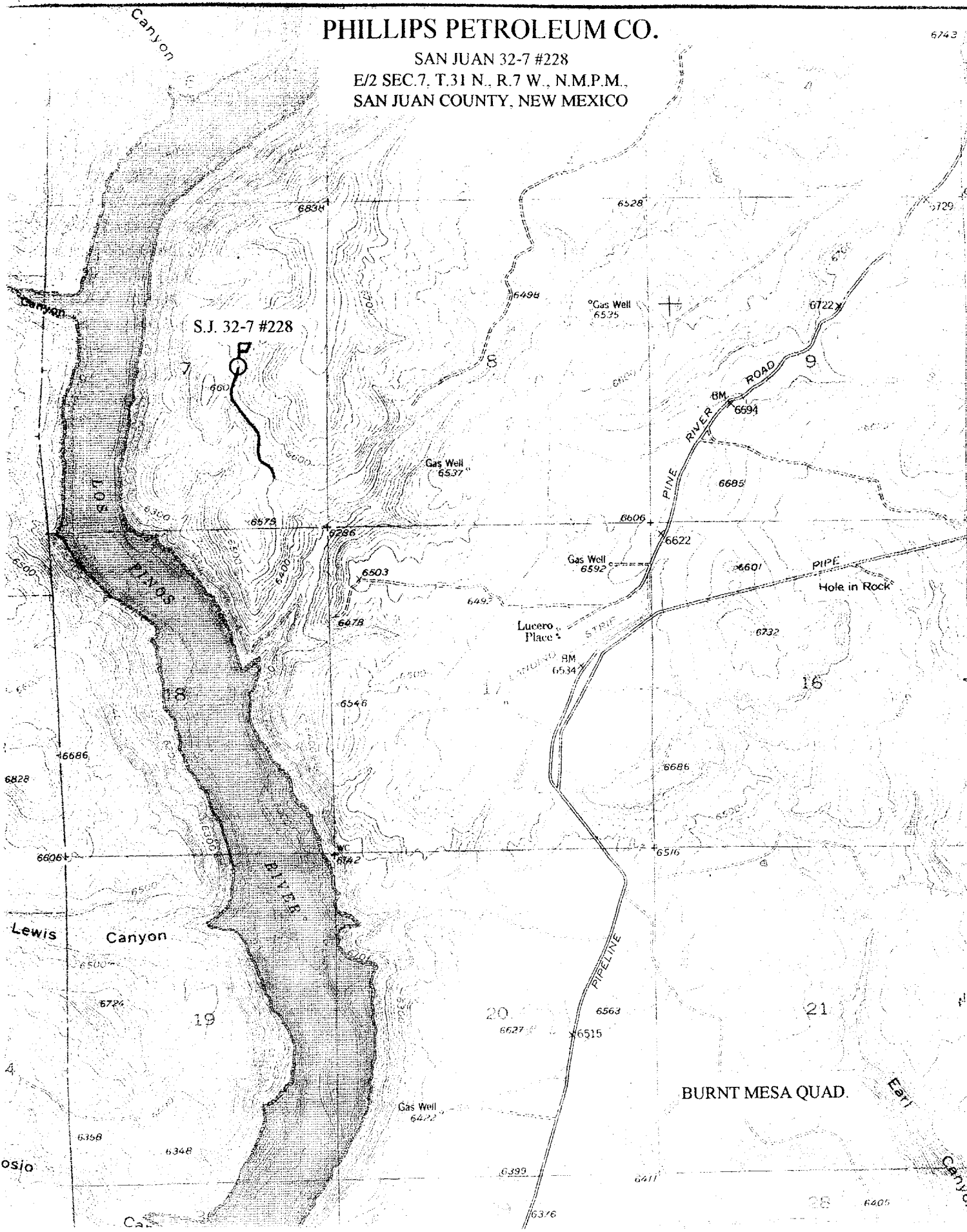
I hereby certify that the well location shown on this plat was plotted from field notes of actual surveys made by me or under my supervision and that the same is true and correct to the best of my knowledge and belief.

6-1-97  
Date of Survey  
*[Signature]*  
Signature and Seal of Professional Surveyor  
**NEW MEXICO REGISTERED PROFESSIONAL LAND SURVEYOR 8894**

# PHILLIPS PETROLEUM CO.

SAN JUAN 32-7 #228  
E/2 SEC. 7, T. 31 N., R. 7 W., N.M.P.M.,  
SAN JUAN COUNTY, NEW MEXICO

6743



BURNT MESA QUAD.

6405