

District I  
PO Box 1980, Hobbs, NM 88241-1980  
District II  
811 S. 1st Street, Artesia, NM 88210-2834  
District III  
1000 Rio Brazos Rd., Aztec, NM 87410  
District IV  
2040 South Pacheco, Santa Fe, NM 87505

State of New Mexico  
Energy, Minerals & Natural Resources Department

OIL CONSERVATION DIVISION  
2040 South Pacheco  
Santa Fe, NM 87505

Form C-101  
Revised October 18, 199  
Instructions on bac  
Submit to Appropriate District O  
State Lease - 6 Copie  
Fee Lease - 5 Copie

☐ AMENDED REPORT

APPLICATION FOR PERMIT TO DRILL, RE-ENTER, DEEPEN, PLUGBACK, OR ADD A ZONE

<sup>1</sup> Operator name and Address Cross Timbers Operating Company 2700 Farmington Ave., Bldg. K. Ste 1 Farmington, NM 87401		<sup>2</sup> OGRID Number 167067
<sup>4</sup> Property Code 22750		<sup>5</sup> Property Name Johnson Gas Com D
		<sup>6</sup> Well No. #2

<sup>7</sup> Surface Location									
UL or lot no.	Section	Township	Range	Lot. Idn	Feet from the	North/South Line	Feet from the	East/West line	County
G	15	30 N	12 W		1,585	North	1,520	East	San Juan

<sup>8</sup> Proposed Bottom Hole Location If Different From Surface									
UL or lot no.	Section	Township	Range	Lot. Idn	Feet from the	North/South Line	Feet from the	East/West line	County

<sup>9</sup> Proposed Pool 1 Basin Fruitland Coal	<sup>10</sup> Proposed Pool 2
--	-------------------------------

<sup>11</sup> Work Type Code N	<sup>12</sup> Well Type Code G	<sup>13</sup> Cable/Rotary Rotary	<sup>14</sup> Lease Type Code Fee	<sup>15</sup> Ground Level Elevation 5,665'
<sup>16</sup> Multiple No	<sup>17</sup> Proposed Depth 2,100'	<sup>18</sup> Formation Fruitland Coal	<sup>19</sup> Contractor Not awarded	<sup>20</sup> Spud Date Est 01/00

<sup>21</sup> Proposed Casing and Cement Program					
Hole Size	Casing Size	Casing weight/foot	Setting Depth	Sacks of Cement	Estimated TOC
8-3/4"	7"	20#, J-55, STC	200'	50	Surface
6-1/4"	4-1/2"	10.5#, J-55, STC	2,100'	190	Surface

<sup>22</sup> Describe the proposed program. If this application is to DEEPEN or PLUG BACK give the data on the present productive zone and proposed new productive zone. Describe the blowout prevention program, if any. Use additional sheets if necessary.

Surface: 50 sacks of Class "B" cement containing 2% CaCl<sub>2</sub> & 1/4 pps celloflake (14.8 ppg, 1.34 cuft/sx). Circulate cement to surface.  
Production: Lead: 65 sx class B cement with 2% D-79 (extender), 1/4 #/sx celloflake & 2% CaCl<sub>2</sub> (11.4 ppg & 2.87 cuft/sx).  
Tail: 125 sx class B cement with 2% D-79 (extender), 1/4 #/sx celloflake & 2% CaCl<sub>2</sub> (13.5 ppg & 1.71 cuft/sx).  
Remarks: use 25% excess over volume calculated from open hole logs to bring TOC to surface.  
BOP program: 11" x 3000 psig double ram BOP.

<sup>23</sup> I hereby certify that the information given above is true and complete to the best of my knowledge and belief.

Signature: *Loren W. Fothergill*

Printed name: Loren W. Fothergill

Title: Production Engineer

OIL CONSERVATION DIVISION

Approved by: *SS. Z*

Title: SUPERVISOR DISTRICT # 3

Approval Date: DEC 30 1999

Expiration Date: DEC 30 2000



District I  
PO Box 1980, Hobbs, NM 88241-1980

District II  
PO Drawer 00, Artesia, NM 88211-0719

District III  
1000 Rio Brazos Rd., Aztec, NM 87410

District IV  
PO Box 2088, Santa Fe, NM 87504-2088

State of New Mexico  
Energy, Minerals & Natural Resources Department

OIL CONSERVATION DIVISION  
PO Box 2088  
Santa Fe, NM 87504-2088

Form C-102  
Revised February 21, 1994  
Instructions on back  
Submit to Appropriate District Office  
State Lease - 4 Copies  
Fee Lease - 3 Copies

☐ AMENDED REPORT

WELL LOCATION AND ACREAGE DEDICATION PLAT

*API Number 30-045-3088	*Pool Code 71629	*Pool Name BASIN FRUITLAND COAL
*Property Code 22750	*Property Name JOHNSON GAS COM "D"	*Well Number 2
*GRID No. 167067	*Operator Name CROSS TIMBERS OPERATING COMPANY	*Elevation 5665'

<sup>10</sup> Surface Location

UL or lot no.	Section	Township	Range	Lot Ion	Feet from the	North/South line	Feet from the	East/West line	County
G	15	30N	12W		1585	NORTH	1520	EAST	SAN JUAN

<sup>11</sup> Bottom Hole Location If Different From Surface

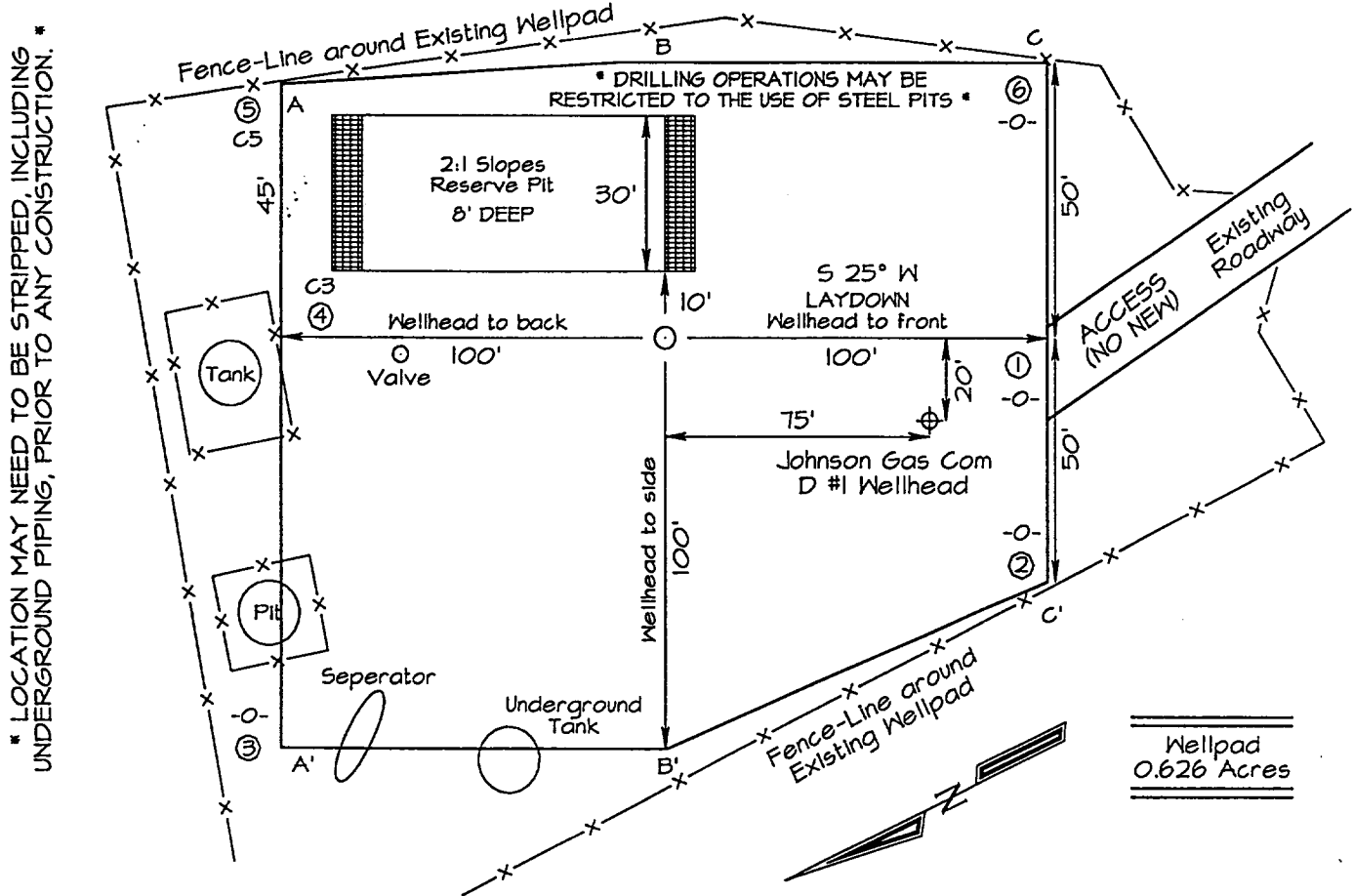
UL or lot no.	Section	Township	Range	Lot Ion	Feet from the	North/South line	Feet from the	East/West line	County
<sup>12</sup> Dedicated Acres 320		<sup>13</sup> Joint or Infill		<sup>14</sup> Consolidation Code		<sup>15</sup> Order No.			

NO ALLOWABLE WILL BE ASSIGNED TO THIS COMPLETION UNTIL ALL INTERESTS HAVE BEEN CONSOLIDATED  
OR A NON-STANDARD UNIT HAS BEEN APPROVED BY THE DIVISION

<div><p>LOT 1</p><p>LOT 2</p><p>15</p><p>2492.16'</p><p>2502.72'</p><p>2645.28'</p><p>2653.20'</p><p>5427.84'</p><p>1505'</p><p>1520'</p><p>2619.54'</p></div>	<div><p><b>RECEIVED</b></p><p>DEC 22/1999</p><p>OIL CON. DIV.</p><p>DIST. 3</p></div>	<div><p><b>17 OPERATOR CERTIFICATION</b></p><p>I hereby certify that the information contained herein is true and complete to the best of my knowledge and belief.</p><p><u>Loren W. Fothergill</u></p><p>Signature</p><p>Loren W. Fothergill</p><p>Printed Name</p><p>Production Engineer</p><p>Title</p><p>12-21-99</p><p>Date</p></div>
	<div><p><b>18 SURVEYOR CERTIFICATION</b></p><p>I hereby certify that the well location shown on this plat was plotted from field notes of actual surveys made by me or under my supervision, and that the same is true and correct to the best of my belief.</p><p>NOVEMBER 13, 1999</p><p>Date of Survey</p><p><u>NEALE C. EDWARDS</u></p><p>Signature and Seal</p><p>NEW MEXICO</p><p>6857</p><p>REGISTERED PROFESSIONAL SURVEYOR</p><p>Certificate Number 6857</p></div>	



**CROSS TIMBERS OPERATING COMPANY JOHNSON GAS COM "D" #2**  
**1585' FNL & 1520' FEL, SECTION 15, T30N, R12W, NMPM, SAN JUAN COUNTY, NEW MEXICO**  
**GROUND ELEVATION: 5665' DATE: NOVEMBER 13, 1999**



A-A'						
5675'						
5665'						
5655'						

B-B'						
5675'						
5665'						
5655'						

C-C'						
5675'						
5665'						
5655'						

Note: Contractor should call One-Call for location of any marked or unmarked buried pipelines or cables



# CROSS TIMBERS OPERATING COMPANY JOHNSON GAS COM "D" #2

1585' FNL & 1520' FEL, SECTION 15, T30N, R12W, N.M.P.M.

SAN JUAN COUNTY, NEW MEXICO

