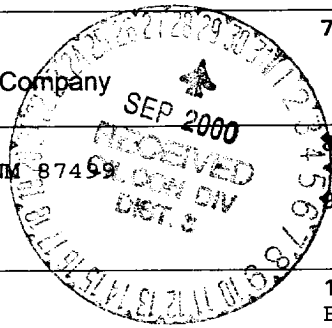


**UNITED STATES  
DEPARTMENT OF THE INTERIOR  
BUREAU OF LAND MANAGEMENT**

**APPLICATION FOR PERMIT TO DRILL, DEEPEN, OR PLUG BACK**

1a. Type of Work DRILL ✓	5. Lease Number NM-03358 Unit Reporting Number	
1b. Type of Well GAS	6. If Indian, All. or Tribe	
2. Operator <b>BURLINGTON RESOURCES</b> Oil & Gas Company	7. Unit Agreement Name Northeast Blanco Unit <b>23785</b>	
3. Address & Phone No. of Operator PO Box 4289, Farmington, NM 87499  (505) 326-9700	8. Farm or Lease Name Northeast Blanco Unit 9. Well Number 58M	
4. Location of Well 1130' FSL, 1675' FEL  Latitude 36° 53.7, Longitude 107° 31.1	10. Field, Pool, Wildcat Blanco Mesaverde/Basin Dakota 11. Sec., Twn, Rge, Mer. (NMPM) Sec.13, T-31-N, R-7-W API # 30-045-30283	
14. Distance in Miles from Nearest Town 10 mi from Navajo Dam P.O.	12. County San Juan	13. State NM
15. Distance from Proposed Location to Nearest Property or Lease Line 1130'	17. Acres Assigned to Well 320 E/2	
16. Acres in Lease	18. Distance from Proposed Location to Nearest Well, Drlg, Compl, or Applied for on this Lease 2400'	
19. Proposed Depth 8170'	20. Rotary or Cable Tools Rotary	
21. Elevations (DF, FT, GR, Etc.) 6468 ✓ GL	22. Approx. Date Work will Start	
23. Proposed Casing and Cementing Program See Operations Plan attached	DRILLING AND CEMENTING AUTHORIZED ARE SUPPORTED BY THE DATA ATTACHED "GENERAL REQUIREMENTS"	
24. Authorized by: <u><i>Regan Cole</i></u> Regulatory/Compliance Administrator	<u>6-13-00</u> Date	



PERMIT NO. \_\_\_\_\_ APPROVAL DATE 9/28/00  
 APPROVED BY \_\_\_\_\_ TITLE PE DATE 9/28/00

**Archaeological Report to be submitted**  
**Threatened and Endangered Species Report to be submitted**  
 NOTE: This format is issued in lieu of U.S. BLM Form 3160-3  
 Title 18 U.S.C. Section 1001, makes it a crime for any person knowingly and willfully to make to any department or agency of the United States any false, fictitious or fraudulent statements or presentations as to any matter within its jurisdiction.

District I  
PO Box 1980, Hobbs NM 88241-1980

State of New Mexico  
Energy, Minerals & Natural Resources Department

Form C-102  
Revised February 21, 1994

District II  
PO Drawer 00, Artesia, NM 88211-0719

OIL CONSERVATION DIVISION  
PO Box 2088  
Santa Fe, NM 87504-2088

Instructions on back  
Submit to Appropriate District Office  
State Lease - 4 Copies  
Fee Lease - 3 Copies

District III  
1000 Rio Brazos Rd., Aztec, NM 87410

District IV  
PO Box 2088, Santa Fe, NM 87504-2088

AMENDED REPORT

### WELL LOCATION AND ACREAGE DEDICATION PLAT

<sup>1</sup> API Number 30-045-30283		<sup>2</sup> Pool Code 72319771599		<sup>3</sup> Pool Name Blanco Mesaverde/Basin Dakota	
<sup>4</sup> Property Code 23785		<sup>5</sup> Property Name NORTHEAST BLANCO UNIT			<sup>6</sup> Well Number 58M
<sup>7</sup> GRID No. 14538		<sup>8</sup> Operator Name BURLINGTON RESOURCES OIL & GAS COMPANY			<sup>9</sup> Elevation 6468

#### <sup>10</sup> Surface Location

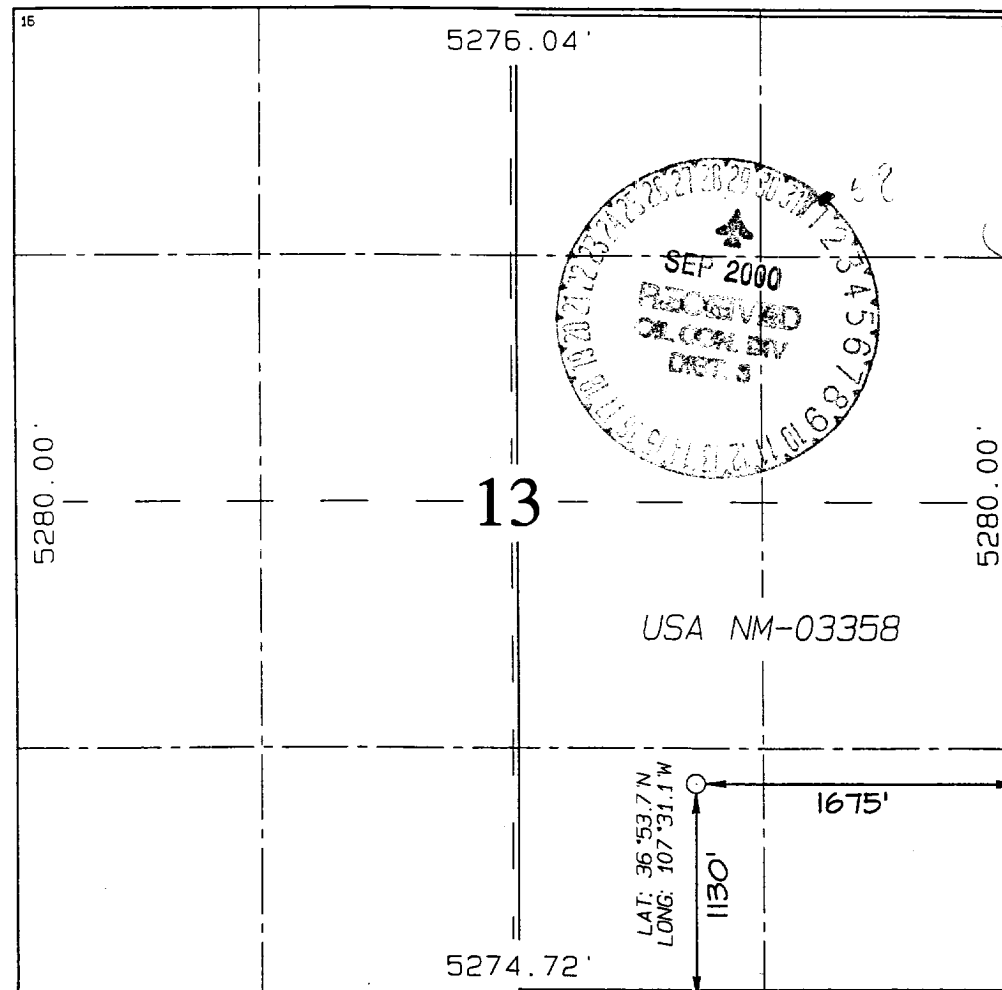
U. or lot no.	Section	Township	Range	Lot Idn	Feet from the	North/South line	Feet from the	East/West line	County
0	13	31N	7W		1130	SOUTH	1675	EAST	SAN JUAN

#### <sup>11</sup> Bottom Hole Location If Different From Surface

U. or lot no.	Section	Township	Range	Lot Idn	Feet from the	North/South line	Feet from the	East/West line	County

<sup>12</sup> Dedicated Acres E/320	<sup>13</sup> Joint or Infill	<sup>14</sup> Consolidation Code	<sup>15</sup> Order No.
--	-------------------------------	----------------------------------	-------------------------

NO ALLOWABLE WILL BE ASSIGNED TO THIS COMPLETION UNTIL ALL INTERESTS HAVE BEEN CONSOLIDATED OR A NON-STANDARD UNIT HAS BEEN APPROVED BY THE DIVISION



#### <sup>17</sup> OPERATOR CERTIFICATION

I hereby certify that the information contained herein is true and complete to the best of my knowledge and belief

*Peggy Cole*  
Signature

Peggy Cole  
Printed Name

Regulatory Supervisor  
Title

6-13-00  
Date

#### <sup>18</sup> SURVEYOR CERTIFICATION

I hereby certify that the well location shown on this plat was plotted from field notes of actual surveys made by me or under my supervision, and that the same is true and correct to the best of my belief.

APRIL 18, 2000  
Date of Survey

*Neale C. Edwards*  
Signature and Seal

**NEALE C. EDWARDS**  
REGISTERED PROFESSIONAL SURVEYOR  
NEW MEXICO  
6857

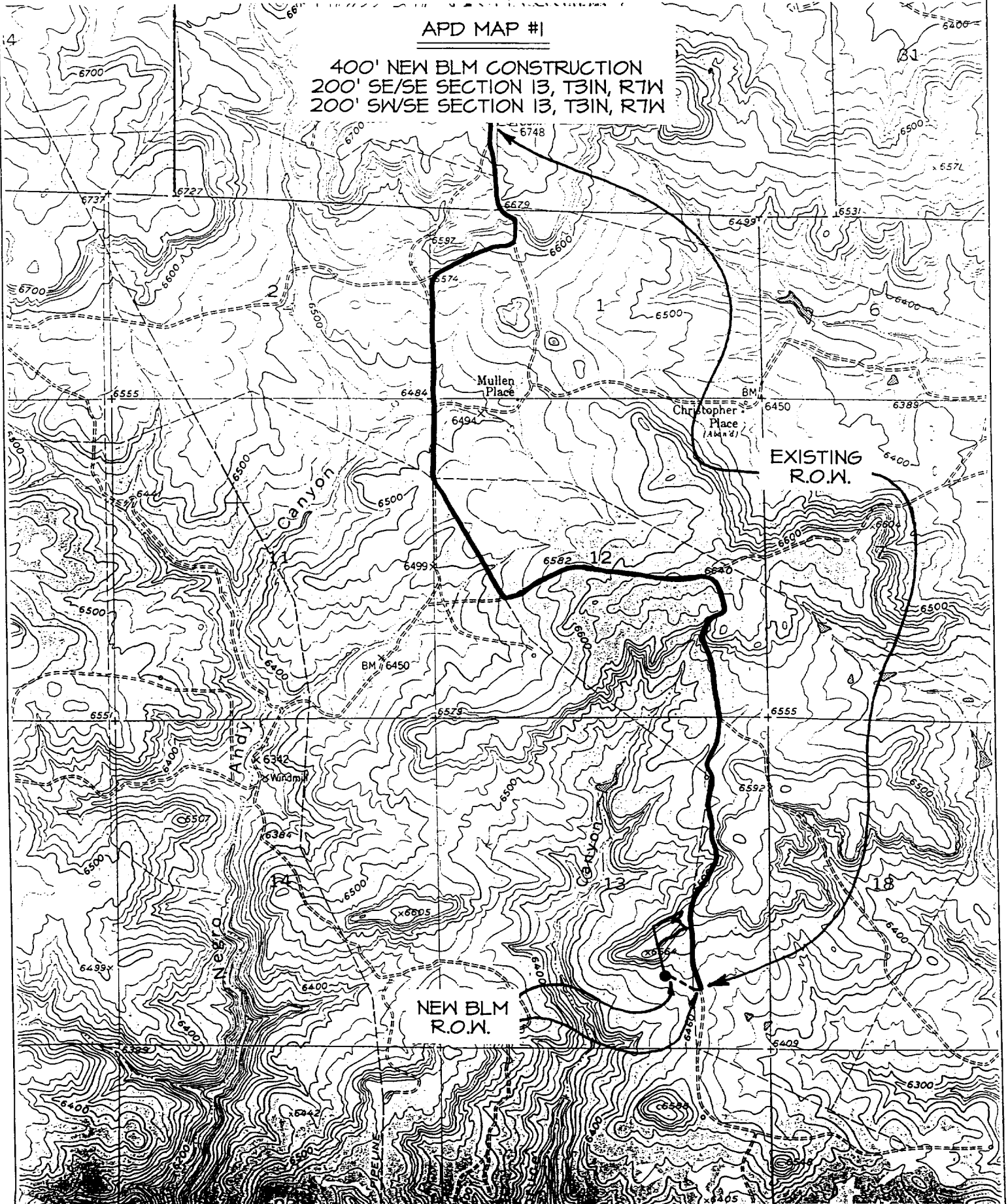
Certificate Number 6857

BURLINGTON RESOURCES OIL & GAS COMPANY NORTHEAST BLANCO UNIT #58M

1130' FSL & 1675' FEL, SECTION 13, T31N, R7W, N.M.P.M.  
SAN JUAN COUNTY, NEW MEXICO

APD MAP #1

400' NEW BLM CONSTRUCTION  
200' SE/SE SECTION 13, T31N, R7W  
200' SWSE SECTION 13, T31N, R7W



OPERATIONS PLAN

Well Name: Northeast Blanco Unit #58M  
Location: 1130' FSL, 1675' FEL, Sec 13, T-31-N, R-7-W  
San Juan County, NM  
Latitude 36° 53.7, Longitude 107° 31.1  
Formation: Blanco Mesaverde/Basin Dakota  
Elevation: 6468' GL

<u>Formation Tops:</u>	<u>Top</u>	<u>Bottom</u>	<u>Contents</u>
Surface	San Jose	2370'	
Ojo Alamo	2370'	2500'	aquifer
Kirtland	2500'	2930'	gas
Fruitland	2930'	3295'	gas
Pictured Cliffs	3295'	3510'	gas
Lewis	3510'	4200'	gas
<b>Intermediate TD</b>	<b>3610'</b>		
Mesa Verde	4200'	4595'	gas
Chacra	4595'	5360'	gas
Massive Cliff House	5360'	5400'	gas
Menefee	5400'	5695'	gas
Massive Point Lookout	5695'	6020'	gas
Mancos	6020'	7010'	gas
Gallup	7010'	7730'	gas
Greenhorn	7730'	7790'	gas
Graneros	7790'	7906'	gas
Dakota	7906'		gas
<b>TD</b>	<b>8170'</b>		

Logging Program:

Cased hole - CBL-CCL-GR - TD to surface  
Open hole - IEL-GR, CNL-CDL - TD to intermediate casing  
Cores - none  
Mud log - 7000' to TD

Mud Program:

<u>Interval</u>	<u>Type</u>	<u>Weight</u>	<u>Vis.</u>	<u>Fluid Loss</u>
0- 200'	Spud	8.4-9.0	40-50	no control
200- 3610'	LSND	8.4-9.0	30-60	no control
3610- 8170'	Gas	n/a	n/a	n/a

Pit levels will be visually monitored to detect gain or loss of fluid control.

Casing Program (as listed, the equivalent, or better):

<u>Hole Size</u>	<u>Depth Interval</u>	<u>Csq. Size</u>	<u>Wt.</u>	<u>Grade</u>
14 3/4"	0' - 200'	11 3/4"	42.0#	H-40
10 5/8"	0' - 3610'	8 5/8"	32.0#	K-55
7 7/8"	3510' - 8170'	5 1/2"	15.5#	K-55

Tubing Program:

0' -6020'	1 1/2"	2.90#	J-55
0' -8170'	1 1/2"	2.76#	J-55

BOP Specifications, Wellhead and Tests:

Surface to Intermediate TD -

11" 3000 psi minimum double gate BOP stack (Reference Figure #1).  
After nipple-up prior to drilling out surface casing, rams and casing will be tested to 600 psi for 30 minutes.

**Intermediate TD to Total Depth -**

11" 3000 psi minimum double gate BOP stack (Reference Figure #1).  
After nipple-up prior to drilling out intermediate casing, rams  
and casing will be tested to 1500 psi for 30 minutes.

**Surface to Total Depth -**

2" nominal, 3000 psi minimum choke manifold (Reference Figure #2).

**Completion Operations -**

7 1/16" 3000 psi double gate BOP stack (Reference Figure #3).  
After nipple-up prior to completion, pipe rams, casing and liner  
top will be tested to 3000 psi for 15 minutes.

**Wellhead -**

11 3/4" x 8 5/8" x 1 1/2" x 1 1/2" x 3000 psi tree assembly.

**General -**

- Pipe rams will be actuated once each day and blind rams will be actuated once each trip to test proper functioning.
- An upper kelly cock valve with handle available and drill string valves to fit each drill string will be available on the rig floors at all times.
- BOP pit level drill will be conducted weekly for each drilling crew.
- All BOP tests and drills will be recorded in daily drilling reports.
- Blind and pipe rams will be equipped with extension hand wheels.

**Cementing:**

11 3/4" surface casing - cement with 221 sx Class "B" cement with 1/4# flocele/sx and 3% calcium chloride (260 cu.ft. of slurry, 200% excess to circulate to surface). WOC 8 hrs. Test casing to 600 psi for 30 minutes.

Saw tooth guide shoe on bottom. Bowspring centralizers will be run in accordance with Onshore Order #2.

**8 5/8" intermediate casing -**

Lead w/484 sx Class "B" w/3% Econolite, 10 pps gilsonite/sx and 0.5 pps flocele/sx. Tail w/90 sx Class "B" 50/50 poz w/2% gel, 2% calcium chloride, 5 pps Gilsonite/sx, 0.25 pps flocele/sx (1517 cu.ft. of slurry, 100% excess to circulate to surface.) WOC minimum of 8 hours before drilling out intermediate casing. If cement does not circulate to surface, a CBL will be run during completion operations to determine TOC. Test casing to 1500 psi for 30 minutes.

8 5/8" intermediate casing alternative two stage: Stage collar at 2830'. First stage: cement with w/260 sx Class "B" 50/50 poz w/2% gel, 2% calcium chloride, 5 pps Gilsonite/sx, 0.25 pps Flocele. Second stage: 410 sx Class "B" with 6% gel, 2% calcium chloride, 1/4# Cellophane/sx, 5# Gilsonite/sx (1517 cu.ft., 100% excess to circulate to surface).

Cement nose guide shoe on bottom with float collar spaced on top of shoe joint. Bowspring centralizers spaced every other joint off bottom, to the base of the Ojo Alamo at 2415'. Two turbolating centralizers at the base of the Ojo Alamo at 2415'. Bowspring centralizers spaced every fourth joint from the base of the Ojo Alamo to the base of the surface casing.

## 5 1/2" Production Liner -

Cement to cover minimum of 100' of 5 1/2" x 8 5/8" overlap. Lead with 802 sx 50/50 Class "B" Poz with 3% gel, 0.3% Halad-344, 0.4% Halad-413, 0.15% HR-5, 0.25# flocele/sx, 5# gilsonite/sx, (1131 cu.ft.), 40% excess to cement 5 1/2" x 8 5/8" overlap). WOC a minimum of 18 hrs prior to completing.

Cement float shoe on bottom with float collar spaced on top of shoe joint.

Note: To facilitate higher hydraulic stimulation completion work, no liner hanger will be used. In its place, a long string of 5 1/2" casing will be run and cemented with a minimum of 100' of cement overlap between the 5 1/2" x 8 5/8" casing strings. After completion of the well, a 5 1/2" retrievable bridge plug will be set below the top of cement in the 5 1/2" x 8 5/8" overlap. The 5 1/2" casing will then be backed off above the top of cement in the 5 1/2" x 8 5/8" overlap and laid down. The 5 1/2" bridge plug will then be retrieved and the production tubing will be run to produce the well.

- If hole conditions permit, an adequate water spacer will be pumped ahead of each cement job to prevent cement/ mud contamination or cement hydration.

Special Drilling Operations (Gas/Mist Drilling):

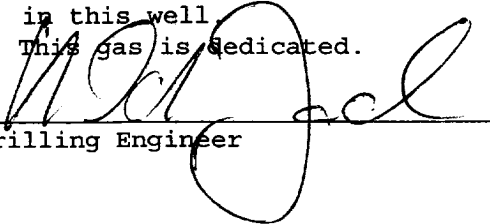
The following equipment will be operational while gas/mist drilling:

- An anchored blooie line will be utilized to discharge all cuttings and circulating medium to the blow pit a minimum of 100' from the wellhead.
- The blooie line will be equipped with an automatic igniter or pilot light.
- Compressors will be located a minimum of 100' from the wellhead in the opposite direction from the blooie line.
- Engines will have spark arresters or water cooled exhaust.
- Deduster equipment will be utilized.
- The rotating head will be properly lubricated and maintained.
- A float valve will be utilized above the bit.
- Mud circulating equipment, water, and mud materials will be sufficient to maintain control of the well.

Additional Information:

- The Mesaverde and Dakota formations will be completed and dualled.
- No abnormal temperatures or hazards are anticipated.
- Anticipated pore pressures are as follows:
 

Fruitland Coal	300 psi
Pictured Cliffs	600 psi
Mesa Verde	700 psi
Dakota	2500 psi
- Sufficient LCM will be added to the mud system to maintain well control, if lost circulation is encountered.
- The east half of Section 13 is dedicated to the Mesaverde and Dakota in this well.
- This gas is dedicated.

  
Drilling Engineer

6/19/00  
Date

submitted in lieu of Form 3160-5

UNITED STATES  
DEPARTMENT OF THE INTERIOR  
BUREAU OF LAND MANAGEMENT

RECEIVED

Sundry Notices and Reports on Wells

2001 AUG 30 PM 1:04

1. Type of Well  
GAS

2. Name of Operator

**BURLINGTON  
RESOURCES**

OIL & GAS COMPANY

3. Address & Phone No. of Operator

PO Box 4289, Farmington, NM 87499 (505) 326-9700

4. Location of Well, Footage, Sec., T, R, M

1130' FSL, 1675' FEL, Sec.13, T-31-N, R-7-W, NMPM

5. Lease Number  
NM-03358

6. If Indian, All. or  
Tribe Name

7. Unit Agreement Name  
Northeast Blanco Unit

8. Well Name & Number  
Northeast Blanco U #58M

9. API Well No.  
30-045-30283

10. Field and Pool  
Blanco MV/Basin DK

11. County and State  
San Juan Co, NM

12. CHECK APPROPRIATE BOX TO INDICATE NATURE OF NOTICE, REPORT, OTHER DATA

Type of Submission

Type of Action

Notice of Intent

Abandonment

Change of Plans

Subsequent Report

Recompletion

New Construction

Final Abandonment

Plugging Back

Non-Routine Fracturing

Casing Repair

Water Shut off

Altering Casing

Conversion to Injection

Other -

13. Describe Proposed or Completed Operations

It is intended to alter the approved casing and cement program of the subject well according to the attached revised operations plan.



14. I hereby certify that the foregoing is true and correct.

Signed Tammy Wimsatt for Title Regulatory Supervisor Date 8/27/01  
TLW

(This space for Federal or State Office use)

APPROVED BY \_\_\_\_\_ Title \_\_\_\_\_ Date 8/31/01

CONDITION OF APPROVAL, if any:

Title 18 U.S.C. Section 1001, makes it a crime for any person knowingly and willfully to make to any department or agency of the United States any false, fictitious or fraudulent statements or representations as to any matter within its jurisdiction.