

File	Edit	View	Tools	Program	Table	Window	Help								
Api_number	Twn	Rge	Sec	Ull	County_1	Fl_n_s	Ns	Ft_e_w	EW	Operator	Well_num	Well_name	Flage_ns	Flage_ew	Coun
30-045-22382	32N	06W	20	B	SAN JUAN	1200	N	1800	E	PALMER O&G	2	YAGER	1200/N	1800/E	SJ
30-045-11325	32N	06W	20	E	SAN JUAN	1750	N	990	W	EL PASO NATURAL G	10	ALLISON	1750/N	990/W	SJ
30-045-27144	32N	06W	20	K	SAN JUAN	2400	S	1975	W	MERIDIAN OIL INC	115	ALLISON UNIT	2400/S	1975/W	SJ
30-045-23448	32N	06W	20	L	SAN JUAN	1820	S	950	W	EL PASO NATURAL G	10-A	ALLISON	1820/S	950/W	SJ
30-045-22737	32N	06W	20	P	SAN JUAN	790	S	1190	E	PALMER O&G	2-A	YAGER	790/S	1190/E	SJ
30-045-21328	32N	06W	21	E	SAN JUAN	1770	N	870	W	EL PASO NATURAL G	32	ALLISON UNIT	1770/N	870/W	SJ
30-045-26229	32N	06W	21	G	SAN JUAN	1840	N	1830	E	MERIDIAN OIL INC	1A	EPNG A	1840/N	1830/E	SJ
30-045-26980	32N	06W	21	G	SAN JUAN	2030	N	1905	E	MERIDIAN OIL INC	100	EPNG "A"	2030/N	1905/E	SJ
30-045-23133	32N	06W	21	N	SAN JUAN	1140	S	1510	W	EL PASO NATURAL G	51	ALLISON UNIT	1140/S	1510/W	SJ
30-045-27206	32N	06W	21	N	SAN JUAN	930	S	1540	W	MERIDIAN OIL INC	117	ALLISON UNIT	930/S	1540/W	SJ
30-045-20936	32N	06W	21	O	RIOARRIBA	790	S	2200	E	EL PASO NATURAL G	1	EPNG A	790/S	2200/E	RA
30-039-82393	32N	06W	22	P	RIOARRIBA	170	S	103	E	LA PLATA GATHERINE	1-22	SAN JUAN UNIT 32-5	170/S	103/E	RA
30-039-24338	32N	06W	23	H	RIOARRIBA	2325	N	1010	E	MERIDIAN OIL INC	101	SAN JUAN 32-5 UNIT	2325/N	1010/E	RA
30-045-11313	32N	06W	23	H	SAN JUAN	2310	N	990	E	LA PLATA GATHERINE	2-23	SAN JUAN UNIT 32-5	2310/N	990/E	SJ
30-039-24268	32N	06W	23	K	RIOARRIBA	1765	S	1485	W	MERIDIAN OIL INC	100	SAN JUAN 32-5 UNIT	1765/S	1485/W	RA
30-039-82394	32N	06W	23	N	RIOARRIBA	790	S	1850	W	LA PLATA GATHERINE	1-23	SAN JUAN UNIT 32-5	790/S	1850/W	RA
30-039-08000	32N	06W	24	G	RIOARRIBA	2310	N	1550	E	LA PLATA GATHERINE	2-24	SAN JUAN UNIT 32-5	2310/N	1550/E	RA
30-039-24269	32N	06W	24	G	RIOARRIBA	2430	N	1560	E	MERIDIAN OIL INC	103	SAN JUAN 32-5 UNIT	2430/N	1560/E	RA
30-039-24295	32N	06W	24	K	RIOARRIBA	1820	S	1635	W	MERIDIAN OIL INC	102	SAN JUAN 32-5 UNIT	1820/S	1635/W	RA
30-039-07997	32N	06W	24	L	RIOARRIBA	1850	S	790	W	LA PLATA GATHERINE	3-24	SAN JUAN UNIT 32-5	1850/S	790/W	RA
30-039-07995	32N	06W	24	M	RIOARRIBA	990	S	790	W	LA PLATA GATHERINE	1-24	SAN JUAN UNIT 32-5	990/S	790/W	RA
30-039-07994	32N	06W	25	B	RIOARRIBA	910	N	1760	E	LA PLATA GATHERINE	2-25	SJ 32-5	910/N	1760/E	RA
30-039-24270	32N	06W	25	B	RIOARRIBA	1060	N	1780	E	MERIDIAN OIL INC	105	SAN JUAN 32-5 UNIT	1060/N	1780/E	RA
30-039-07990	32N	06W	25	H	RIOARRIBA	1850	N	660	E	LA PLATA GATHERING	2-26	SJ 32-5	1850/N	660/E	RA

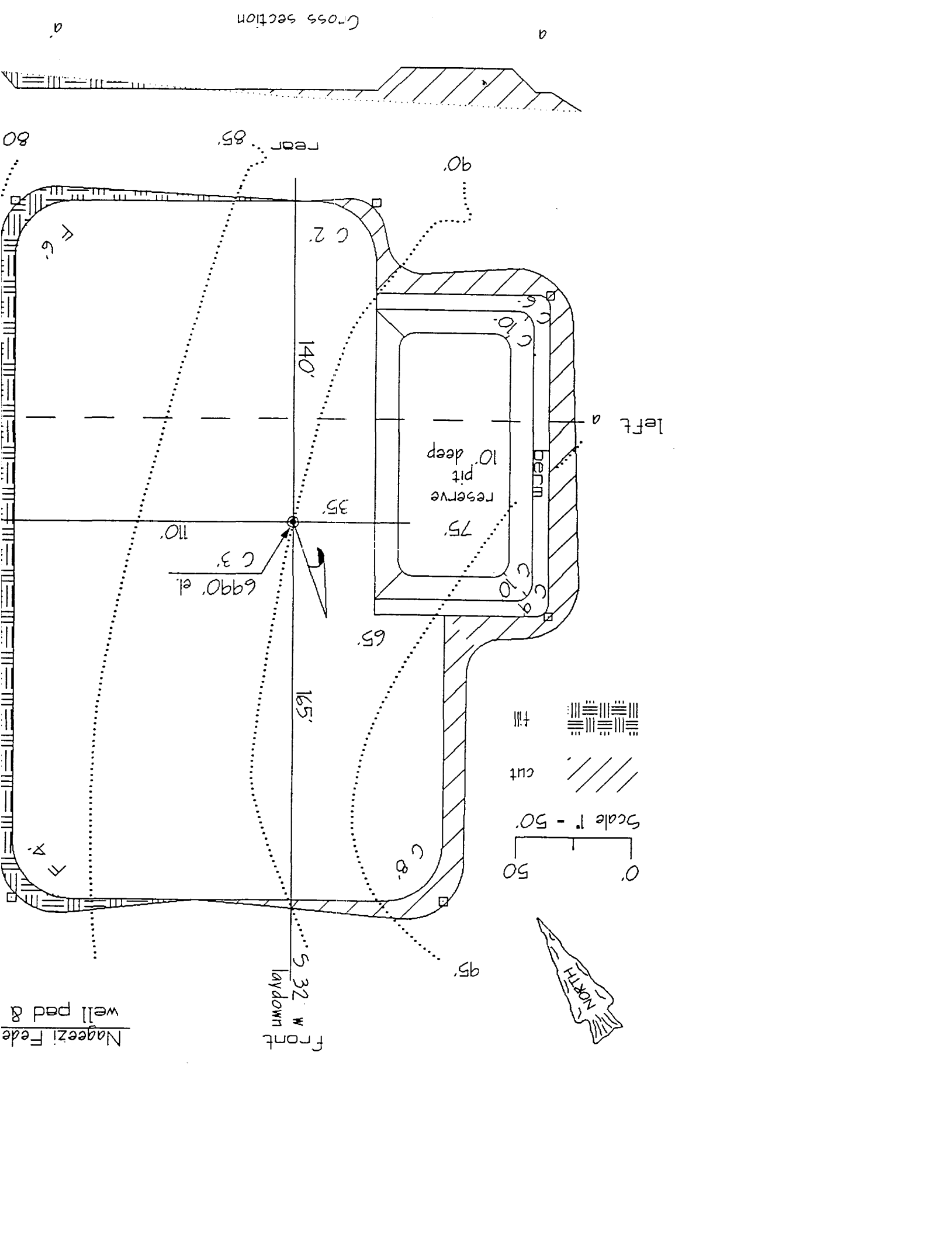
Record: 15436/22782 Exclusive

NUM CAPS

2/12/01 This is in 39 country - Chg api# to 39-11313 per Frank

Not in ONGARD

Get back



Api number	Twn	Rge	Sec	UI	County	1	Ft n s	Ns	Ft e w	EW	Operator	Well num	Well name
30-039-08184	26N	01E	35	L	RIOARRIBA		2145 S		770 W		DUNN SAM G	3	GREVEY
30-039-08185	26N	01E	27	I	RIOARRIBA		1990 S		950 E		DUNN SAM G	20	PUERTO CHIQUITO
30-039-08186	26N	06W	25	B	RIOARRIBA		1190 N		1565 E		TENNECO OIL	1	REAMES COM
30-039-08190	24N	05W	36	I	RIOARRIBA		1850 S		790 E		FAAST DRUG	1	JICARILLA
30-039-08212	25N	06W	09	I	RIOARRIBA		1820 S		810 E		MERRIDON & BAYLESS	1	HILL
30-039-08229	23N	02W	07	C	RIOARRIBA		990 N		1650 W		WAGENSELLER SHER	11	MOBIL-APACHE
30-039-08230	23N	03W	12	F	RIOARRIBA		1800 N		1850 W		WAGENSELLER SHER	12	MOBIL-APACHE
30-039-08642	29N	06W	06	D	RIOARRIBA		850 S		1750 E		PAN AMERICAN PETR	1	JACQUEZ GAS UNIT C
30-039-08637	29N	02W	02	A	RIOARRIBA		990 N		990 E		HARVEY FRANCIS L	1	STATE
30-039-09110	30N	07W	27	M	RIOARRIBA		990 S		990 W		SOUTHERN UNION G	1	MCELVAIN
30-039-09807	30N	07W	03	M	RIOARRIBA		990 S		990 W		SAN JUAN PROD	2B	HOWELL
30-039-11240	32N	04W	29	K	SAN JUAN		1550 S		1650 W		PHILLIPS PETROLEUM	1-29	MESSA UNIT 32-4
30-039-11297	32N	05W	19	I	RIOARRIBA		1980 S		734 E		LA PLATA GATHERINE	1-19	SAN JUAN UNIT 32-5
30-039-11887	26N	05W	20	G	SAN JUAN		1750 N		1450 E		TENNECO OIL	5	JICARILLA-A
30-039-18178	26N	01E	04	D	RIOARRIBA		395 N		330 W		BENSON-MONTIN & G	4-4	PUERTO CHIQUITO
30-039-18179	25N	01E	03	H	RIOARRIBA		1965 N		675 E		ROYAL DEV	1	ROYAL-D
30-039-18182	29N	07W	05	B	RIOARRIBA		790 N		1850 E		EL PASO NATURAL G	1	HODGES
30-039-18183	29N	07W	04	B	RIOARRIBA		990 N		1650 E		EL PASO NATURAL G	2-A	DAUM
30-039-18184	24N	03W	24	E	RIOARRIBA		1800 N		990 W		EL PASO NATURAL G	31	LINDRETH UNIT
30-039-18185	23N	01W	04	H	RIOARRIBA		1650 N		990 E		SHAR-ALAN OIL	2	BROWNING DOUTHIT
30-039-18186	23N	02W	11	K	RIOARRIBA		2540 S		2540 W		SHAR-ALAN OIL	1-X	JICARILLA "D" #156
30-039-18187	32N	02E	19	D	RIOARRIBA		990 N		330 W		AXELINE OIL COMPAN	1	GONZALES M
30-039-18188	32N	03E	24	B	RIOARRIBA		300 N		2000 E		UNION OIL	1-4	BOTTERILL CORE HOLE
30-039-18191	28N	05E	20		RIOARRIBA		0		0		ATLANTIC REFINING	4	ANDRUS TRUST
30-039-18193	31N	02E	32	K	RIOARRIBA		2380 S		1980 W		GREAT AMERICAN OI	3	SARGENT
30-039-18194	31N	02E	14		RIOARRIBA		0		0		P O & G	1	UNKNOWN
30-039-18195	31N	03F	18	N	RIOARRIBA		830 S		1800 F		GRFAT AMERICAN OIL	?	SARGENT JOHN ESTATE

2/12/01 Grant paid for use 30-039-11313 for San Juan 32-5 #11

7. Methods of Handling Waste Disposal

- A. The drill cuttings, fluids and completion fluids will be placed in the reserve pit. The reserve pit will be fenced on three sides away from the pad during drilling and the fourth side fenced as soon as the rig moves out. The reserve pit will be allowed to dry, and materials remaining in the reserve pit buried. The reserve pit will be backfilled, leveled and contoured so as to prevent any materials being carried into the watershed. Upon completion, the pad will be leveled, contoured, and reseeded with the appropriate seed mixture as specified by the surface managing agency.
- B. All garbage and trash will be hauled away to designated landfill by Conoco.
- C. Chemical toilets will be provided and maintained during drilling operations.

8. Ancillary Facilities

No ancillary facilities are planned.

9. Production Facility Layout

See attachment to this plan.

10. Plans for Restoration of Surface

When the well is abandoned, the location and access road will be cleaned and restored to the original topographical contours as much as possible. The area will be reseeded with the appropriate seed mixture. If the well is productive, areas not used in production will be contoured and seeded with stipulated seed mixture. Production equipment will be painted the color designated by the surface managing agency.

11. Surface Ownership

The surface ownership is Jicarilla Apache.

12. Archeological Clearance

See attachment to this plan.