

UNITED STATES
DEPARTMENT OF THE INTERIOR
BUREAU OF LAND MANAGEMENT

SUBMIT IN TRIPLICATE*
(Other instructions on
reverse side)

FORM APPROVED
OMB NO. 1004-0136
Expires: February 28, 1995

APPLICATION FOR PERMIT TO DRILL OR DEEPEN

1a. TYPE OF WORK
DRILL ☒ **DEEPEN** ☐

b. TYPE OF WELL
OIL WELL ☐ GAS WELL ☒ OTHER ☐ SINGLE ZONE ☒ MULTIPLE ZONE ☐

2. NAME OF OPERATOR
ENERGEN RESOURCES CORPORATION

3. ADDRESS AND TELEPHONE NO.
2198 Bloomfield Highway; Farmington, NM 87401

4. LOCATION OF WELL (Report location clearly and in accordance with any State requirements.)
At surface
510' FSL, 2405' FWL
At proposed prod. zone

5. LEASE DESIGNATION AND SERIAL NO.
SF-079011

6. IF INDIAN, ALLOTTEE OR TRIBE NAME
San Juan 32-5 Unit 21996

7. UNIT AGREEMENT NAME
San Juan 32-5 Unit 4R

8. FARM OR LEASE NAME, WELL NO.
San Juan 32-5 Unit 4R

9. API WELL NO.
30-039-26369

10. FIELD AND POOL, OR WILDCAT
Blanco Mesaverde

11. SEC., T., R., M., OR BLK. AND SURVEY OR AREA
Sec. 23, T32N, R6W, N.M.P.M.

12. COUNTY OR PARISH
Rio Arriba

13. STATE
NM

14. DISTANCE IN MILES AND DIRECTION FROM NEAREST TOWN OR POST OFFICE*
Eight (8) miles SE of Arboles, Colorado

15. DISTANCE FROM PROPOSED* LOCATION TO NEAREST PROPERTY OR LEASE LINE, FT.
(Also to nearest drlg. unit line, if any) **510'**

16. NO. OF ACRES IN LEASE
1320

17. NO. OF ACRES ASSIGNED TO THIS WELL
320 W/H

18. DISTANCE FROM PROPOSED LOCATION* TO NEAREST WELL, DRILLING, COMPLETED, OR APPLIED FOR, ON THIS LEASE, FT.
900'

19. PROPOSED DEPTH
6073

20. ROTARY OR CABLE TOOLS
Rotary

21. ELEVATIONS (Show whether DF, RT, GR, etc.)
6331'

22. APPROX. DATE WORK WILL START*

PROPOSED CASING AND CEMENTING PROGRAM

SIZE OF HOLE	GRADE SIZE OF CASING	WEIGHT PER FOOT	SETTING DEPTH	QUANTITY OF CEMENT
12 1/4	9 5/8	32.3#	200'	130 cu. ft., circ. to surface
8 3/4	7	20#	3573'	806 cu. ft., circ. to surface
6 1/4	4 1/2	10.5#	3423'-6073'	407 cu. ft., circ. liner

Selectively perforate and sand water fracture the Mesaverde.
This gas is dedicated.

A Williams Field Service Pipeline ROW Plat is attached.

This action is subject to technical and
procedural review pursuant to 43 CFR 3100.3
and appeal pursuant to 43 CFR 3100.4.

ENVIRONMENTAL REVIEW REQUIRED
FOR THIS ACTION
"GENERAL RECOMMENDATION"

IN ABOVE SPACE DESCRIBE PROPOSED PROGRAM: If proposal is to deepen, give data on present productive zone and proposed new productive zone. If proposal is to drill or deepen directionally, give pertinent data on subsurface locations and measured and true vertical depths. Give blowout preventer program, if any.

24. SIGNED [Signature] TITLE Production Superintendent DATE 2/10/00
(This space for Federal or State office use)

PERMIT NO. _____ APPROVAL DATE _____

Application approval does not warrant or certify that the applicant holds legal or equitable title to those rights in the subject lease which would entitle the applicant to conduct operations thereon.

CONDITIONS OF APPROVAL, IF ANY:

/s/ Charlie Beecham

APPROVED BY _____ TITLE _____ DATE APR 26 2000

*See Instructions On Reverse Side

Title 18 U.S.C. Section 1001, makes it a crime for any person knowingly and willfully to make to any department or agency of the United States any false, fictitious or fraudulent statements or representations as to any matter within its jurisdiction.

OK [Signature]

PO Box 1980, Hobbs, NM 88241-1980

State of New Mexico
Energy, Minerals & Natural Resources Department

Revised February 21, 1994

District II
PO Drawer DD, Artesia, NM 88211-0719

OIL CONSERVATION DIVISION

PO Box 2088

Santa Fe, NM 87504-2088

Instructions on back
Submit to Appropriate District Office

State Lease - 4 Copies

Fee Lease - 3 Copies

District III
1000 Rio Brazos Rd., Aztec, NM 87410

District IV
PO Box 2088, Santa Fe, NM 87504-2088

☐ AMENDED REPORT

WELL LOCATION AND ACREAGE DEDICATION PLAT

*API Number 30-039-26364	*Pool Code 72319	*Pool Name Blanco Mesavende
*Property Code 21996	*Property Name SAN JUAN 32-5 UNIT	*Well Number 4R
*OGRID No. 162928	*Operator Name ENERGEN RESOURCES CORPORATION	*Elevation 6331'

10 Surface Location

UL or lot no.	Section	Township	Range	Lot Ion	Feet from the	North/South line	Feet from the	East/West line	County
N	23	32N	6W		510	SOUTH	2405	WEST	RIO ARriba

11 Bottom Hole Location If Different From Surface

UL or lot no.	Section	Township	Range	Lot Ion	Feet from the	North/South line	Feet from the	East/West line	County

*Dedicated Acres 320 $\frac{1}{2}$	*Joint or Infill	*Consolidation Code	*Order No.
---------------------------------------	------------------	---------------------	------------

NO ALLOWABLE WILL BE ASSIGNED TO THIS COMPLETION UNTIL ALL INTERESTS HAVE BEEN CONSOLIDATED OR A NON-STANDARD UNIT HAS BEEN APPROVED BY THE DIVISION

	17 OPERATOR CERTIFICATION I hereby certify that the information contained herein is true and complete to the best of my knowledge and belief. Signature Gary Brink Printed Name Production Superintendent Title 2/10/00 Date
	18 SURVEYOR CERTIFICATION I hereby certify that the well location shown on this plat was plotted from field notes of actual surveys made by me or under my supervision, and that the same is true and correct to the best of my belief. NOVEMBER 13, 1999 Date of Survey Signature and Seal Certificate 6857

BOP SPECIFICATIONS:

An 11" 2000 psi minimum double gate BOP stack (Figure 1) will be used following nipple up of casing head. During air drilling operations, a Shaffer Type 50 or equivalent rotating head will be installed on top of the stack. A 2" nominal, 2000 psi minimum choke manifold will be used. An upper Kelly Cock valve with handle available and drill string valve to fit each drill string will be available on the rig floor during drilling operations.

CEMENTING:

9 5/8" surface casing - cement with 110 sks Class B Cement with 1/4" flocele/sk and 2% calcium chloride (130 cu. ft. of slurry, 100% excess to circulate to surface). WOC 12 hrs. Test casing to 600# for 30 minutes.

Texas Pattern Guide Shoe on bottom. 3 bow type centralizers spaced throughout the string.

7" intermediate casing – cement with 355 sks 65/35 Class B Poz with 6% gel, 2% calcium chloride, 10% gilsonite, and 1/4# flocele/sk. Tail with 100 sks Class B w/2% calcium chloride, 10% gilsonite and 1/4# flocele/sk. (806 cu. ft. of slurry, 50% excess to circulate to surface). WOC 12 hrs. If cement does not circulate, run temperature survey in 8 hrs. to determine TOC. Test casing to 1200 psi for 30 minutes.

Cement nose guide shoe on bottom with a self-fill insert float valve on top of shoe joint. 10 bow spring centralizers spaced every 2nd joint off bottom. Two turbolating centralizers at the base of the Ojo Alamo.

4 1/2" Production Liner

Cement with 325 sks 50/50 Poz with 2% gel, 5 PPS gilsonite, and .4% halad – 9 and 1/4# flocele/sk (408 cu. ft., 50% excess to tie into intermediate casing string). WOC 18 hrs. prior to completion.

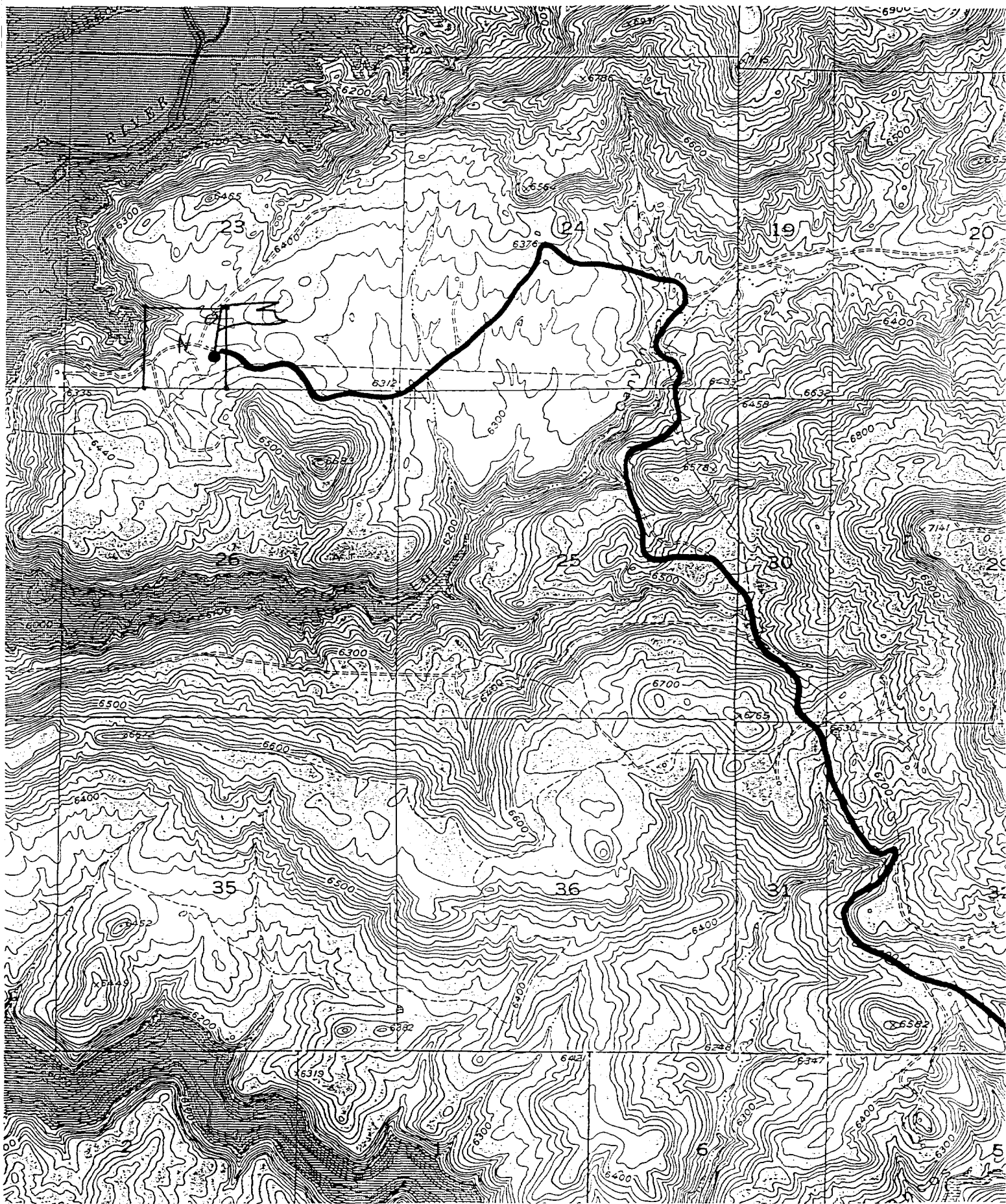
Cement nose guide shoe on bottom with float collar on top of shoe joint. Liner hanger will have neopreme packoff on top.

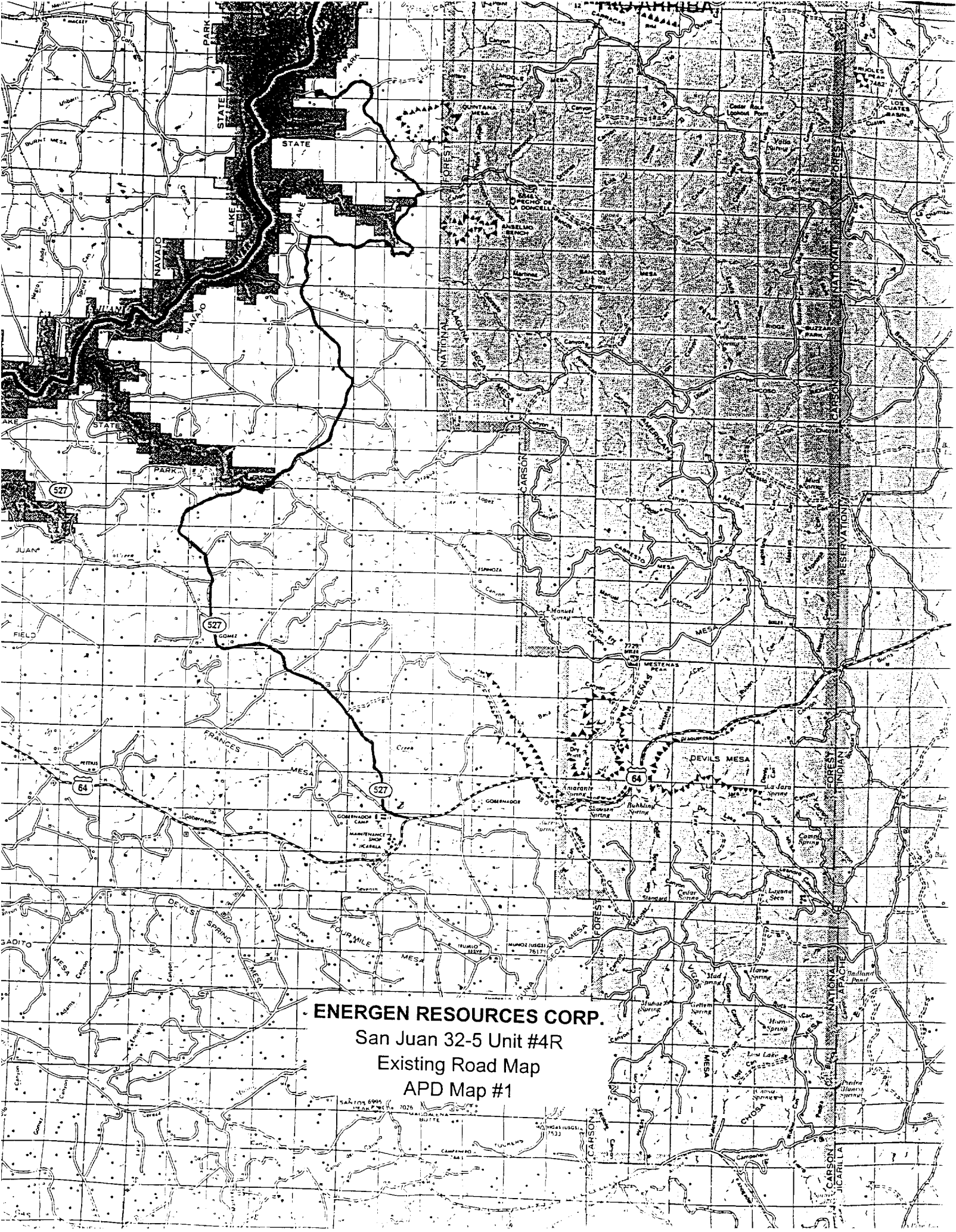
OTHER INFORMATION:

- 1) The Blanco Mesa Verde will be completed.
- 2) No abnormal temperatures or pressures are anticipated.
- 3) Anticipated pore pressure for the Mesa Verde is 1000.
- 4) If lost circulation is encountered sufficient LCM will be added to the mud system to maintain well control.
- 5) This gas is dedicated.
- 6) Anticipated pore pressure for the Fruitland is 700 psi and the Pictured Cliffs is 800 psi.

ENERGEN RESOURCES CORPORATION SAN JUAN 32-5 UNIT #4R

510' FSL & 2405' FWL, SECTION 23, T32N, R6W, N.M.P.M.
RIO ARriba COUNTY, NEW MEXICO





ENERGEN RESOURCES CORP.
San Juan 32-5 Unit #4R
Existing Road Map
APD Map #1