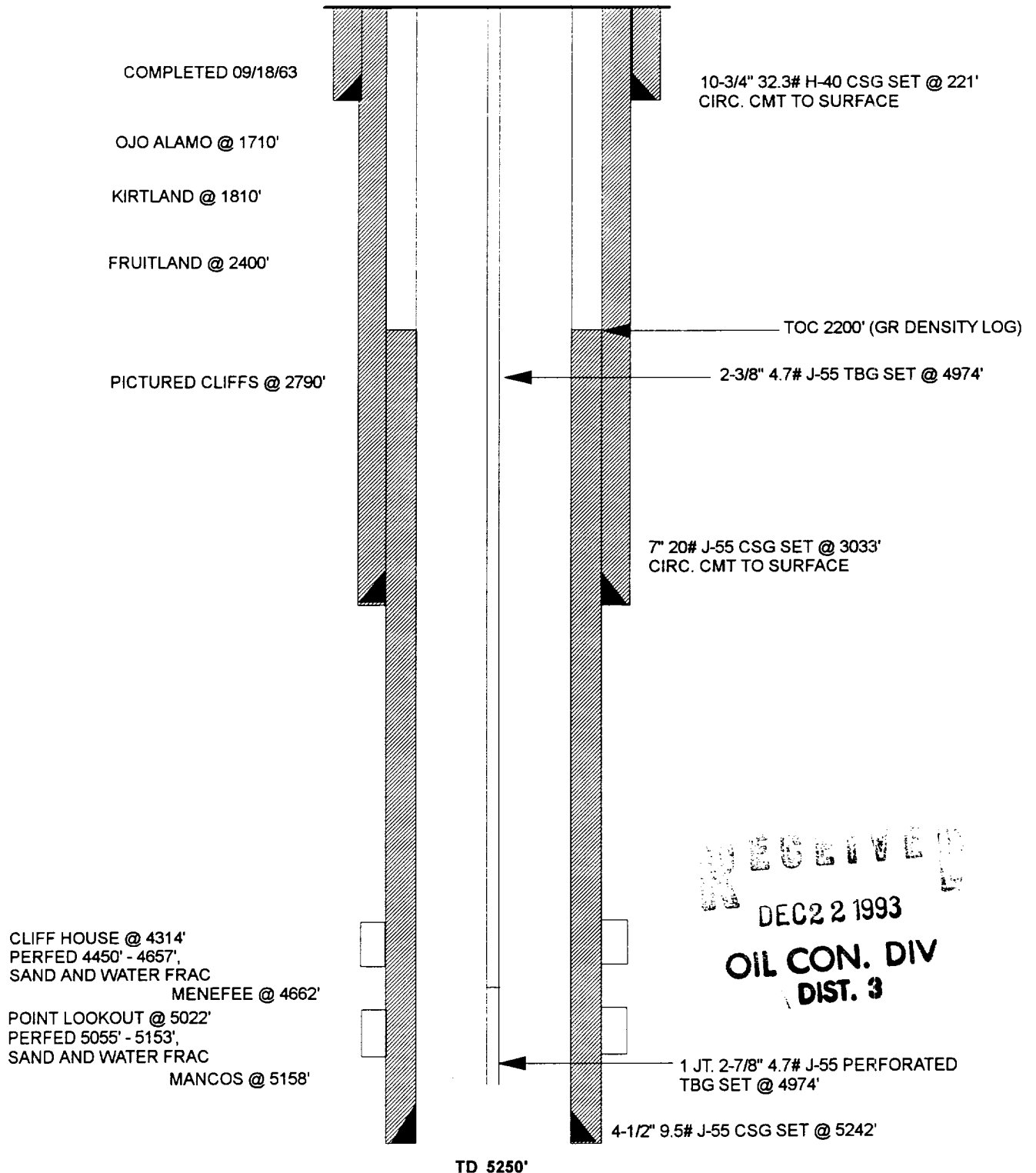


JOHNSTON FEDERAL #9

CURRENT

BLANCO MESAVERDE

UNIT H, SEC 35, T31N, R09W, SAN JUAN COUNTY, NM



RECEIVED
DEC 22 1993
OIL CON. DIV
DIST. 3

submitted in lieu of Form 3160-5

UNITED STATES
DEPARTMENT OF THE INTERIOR
BUREAU OF LAND MANAGEMENT

RECEIVED
OCT 16 1995

Sundry Notices and Reports on Wells

95 OCT 16 PM 3:24

1. Type of Well
GAS

2. Name of Operator
MERIDIAN OIL

3. Address & Phone No. of Operator
PO Box 4289, Farmington, NM 87499 (505) 326-9700

4. Location of Well, Footage, Sec., T, R, M
1850' FNL, 790' FEL, Sec.35, T-31-N, R-9-W, NMPM

5. Lease Number
SF-078439
If Indian, All. or
Tribe Name

7. Unit Agreement Name

8. Well Name & Number
Johnston Federal #9
9. API Well No.
30-045-10135
10. Field and Pool
Blanco Mesaverde
11. County and State
San Juan Co, NM

12. CHECK APPROPRIATE BOX TO INDICATE NATURE OF NOTICE, REPORT, OTHER DATA

Type of Submission

☒ Notice of Intent
☐ Subsequent Report
☐ Final Abandonment

Type of Action

☐ Abandonment ☐ Change of Plans
☐ Recompletion ☐ New Construction
☐ Plugging Back ☐ Non-Routine Fracturing
☐ Casing Repair ☐ Water Shut off
☐ Altering Casing ☐ Conversion to Injection
☒ Other - Tubing repair

13. Describe Proposed or Completed Operations

It is intended to repair the tubing in the subject well according to the attached procedure and wellbore diagram.

RECEIVED
OCT 20 1995

OIL CON. DIV.
DIST. 3

14. I hereby certify that the foregoing is true and correct.

Signed [Signature] (VGW5) Title Regulatory Administrator Date 10/10/95

(This space for Federal or State Office use)

APPROVED BY _____ Title _____

Date

CONDITION OF APPROVAL, if any:

APPROVED

OCT 17 1995

DISTRICT MANAGER

NMOCD

WORKOVER PROCEDURE - TUBING REPAIR

Johnston Federal #9
DPNO 13037S
Blanco Mesaverde
Section 35, T31N, R09W
San Juan County, New Mexico

1. Install and test location rig anchors. Prepare blow pit. Comply to all NMOCD, BLM, and MOI safety regulations.
2. MOL and RU. Conduct safety meeting for all personnel on location. NU relief line. Blow down well and kill with 1% KCl water as necessary. ND wellhead and NU BOP. Test BOP.
3. POH w/2 3/8" tbg (161 jts). Inspect tubing and replace all bad joints. (Note any buildup of scale, and notify Operations Engineer. If tubing is excessively scaled, acid wash may be run in perforations.) Remove bull plug and perforated joint. PU and RIH with 3 7/8" bit and 4 1/2" 9.5# casing scraper to PBTD (5199'). CO w/hydrostatic bailer and POH.
4. PU 4 1/2" RBP and RIH. Set @ 4350'. Load hole w/1% KCl water. Pressure test casing to 750#. (If casing does not test, dump 1 sx of sand on top of RBP. Notify Operations Engineer. Isolate failure and repair.) Release RBP and POH.
5. RIH open-ended w/2 3/8" 4.7# tbg, SN one joint off bottom. (Rabbit tubing in derrick before running in hole.) Land @ 5147'.
6. ND BOP, NU wellhead, rig down, move off location, and restore location.

Recommended: _____
Operations Engineer

Approval: _____
Drilling Superintendent

Contacts: Operations Engineer

Gaye White

326-9875

VGW

Johnston Federal #9

Current -- 9/26/95

DPNO 13037S
Blanco Mesaverde

Unit H, Sec. 35, T31N, R09W
1850' FNL, 790' FEL

San Juan County, New Mexico

Longitude / Latitude: 107.743332 - 36.856567

Spud: 9/3/63
Completed: 12/2/63
Workovers: 1/12/86
7/11/89
Elevation: GL 5975'
KB 5987'

Ojo Alamo @ 1710'

Kirtland @ 1810'

Fruitland @ 2400'

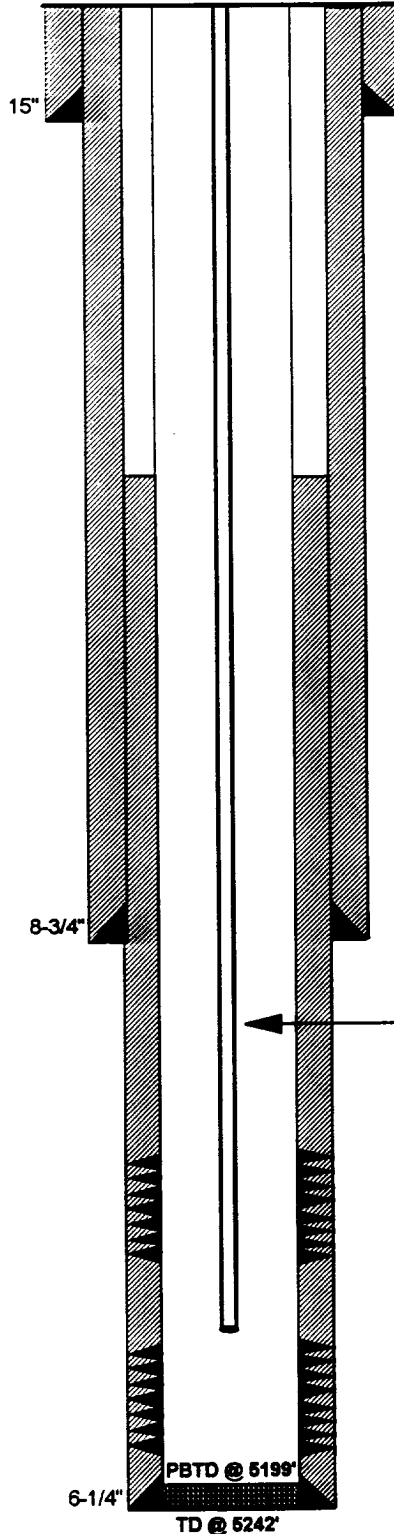
Pictured Cliffs @ 2790'

Cliffhouse @ 4314'

Menefee @ 4662'

Point Lookout @ 5022'

Mancos @ 5158'



10-3/4", 32.3#, H40 csg. set @ 221'
Circ. 200 sx cmt to surface.

TOC @ 2200' (TS)

7", 20#, J55 seamless csg. set @ 3033'
Circ. 700 sx cmt., 50 bbl excess

2-3/8" (161 jts), 4.7#, J55 set @ 4974'
SN @ 4941' . Bullplugged w/perf. jt. on bottom.

Perfs: 4450' - 2 holes; 4547', 4553', 4554', 4555',
4575', 4631', 4632" - 1 hole each; 4607'-12" - 10 holes;
4641'-4657' - 32 holes

Perfs: 5055', 5056', 5057', 5138', 5140', 5141' -1 Hole
each; 5105', 5117' - 24 Holes; 5124'-5128' - 8 holes;
5153'-5147' - 12 holes.

4-1/2", 9.5#, J55 csg. set @ 5242'
Cmt. w/195 sx

6-1/4" PBTD @ 5199'
TD @ 5242'

Initial Potential:

Initial AOF: 8963 Mcf/d -9/23/63
Initial SICP: 760 Psig -9/26/63
Last Available 280 Psig -8/15/93

Prod. History:

	Gas	Oil
1995 Cum:	2.2 Bcf	14.9 Mbo
5/95:	8.3 Mcf/d	0 bo

Ownership:

GW1: 75.000%
NRI: 61.875%
SJB: 00.000%

Pipeline:

EPNG