

**NEW MEXICO OIL CONSERVATION COMMISSION
WELL LOCATION AND ACREAGE DEDICATION PLAT**

Form C-102
Supersedes C-122
Effective 1-1-65

All distances must be from the outer boundaries of the Section.

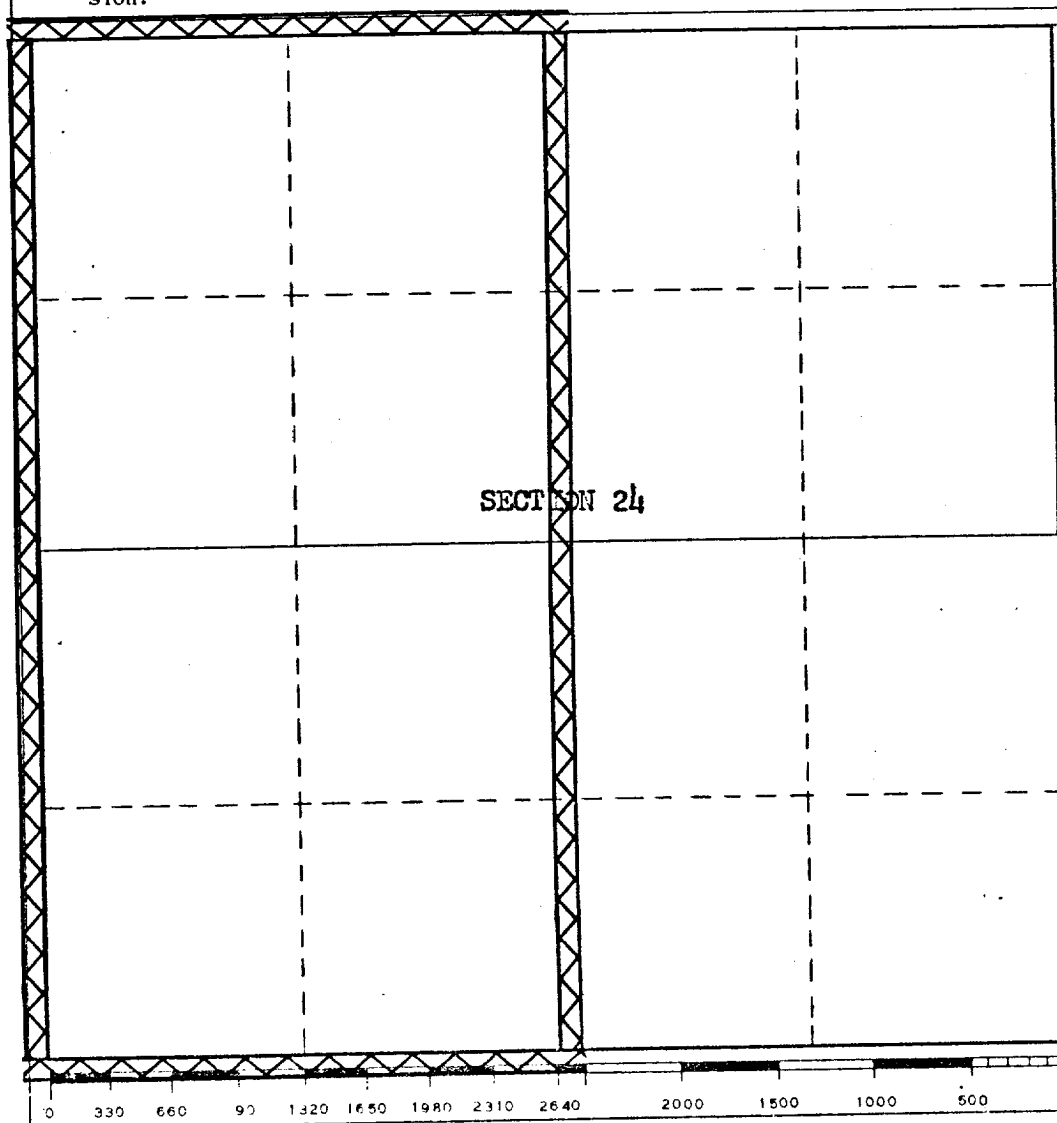
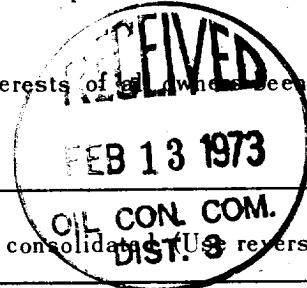
Operator EL PASO NATURAL GAS COMPANY			Lease ATLANTIC COM.		Well No. 3
Unit Letter K	Section 24	Township 31-N	Range 10-W	County SAN JUAN	
Actual Footage Location of Well: <div style="display: flex; justify-content: space-between;"> 1650 feet from the SOUTH line and 1650 feet from the WEST line </div>					
Ground Level Elev. 6514	Producing Formation MESA VERDE	Pool BLANCO MESA VERDE		Dedicated Acreage: 282.48 Acres	

1. Outline the acreage dedicated to the subject well by colored pencil or hachure marks on the plat below.
2. If more than one lease is dedicated to the well, outline each and identify the ownership thereof (both as to working interest and royalty).
3. If more than one lease of different ownership is dedicated to the well, have the interests of all owners been consolidated by communitization, unitization, force-pooling, etc?

☐ Yes ☐ No If answer is "yes," type of consolidation _____

If answer is "no," list the owners and tract descriptions which have actually been consolidated (on reverse side of this form if necessary.) _____

No allowable will be assigned to the well until all interests have been consolidated (by communitization, unitization, forced-pooling, or otherwise) or until a non-standard unit, eliminating such interests, has been approved by the Commission. **NOTE: CORRECTED ACREAGE PER DEPENDENT RESURVEY.**



CERTIFICATION	
I hereby certify that the information contained herein is true and complete to the best of my knowledge and belief.	
Name	Original Signed F. H. WOOD
Position	Petroleum Engineer
Company	El Paso Natural Gas Company
Date	February 13, 1973
I hereby certify that the well location shown on this plat was plotted from field notes of actual surveys made by me or under my supervision, and that the same is true and correct to the best of my knowledge and belief.	
Date Surveyed	1952
Registered Professional Engineer and/or Land Surveyor	
Certificate No.	