

UNITED STATES
DEPARTMENT OF THE INTERIOR
BUREAU OF LAND MANAGEMENT

FORM APPROVED
Budget Bureau No. 1004-0135
Expires: March 31, 1993

SUNDRY NOTICES AND REPORTS ON WELLS

Do not use this form for proposals to drill or to deepen or reentry to a different reservoir.
Use "APPLICATION FOR PERMIT—" for such proposals

5. Lease Designation and Serial No.

SFO78243

6. If Indian, Allottee or Tribe Name

7. If Unit or CA, Agreement Designation

8. Well Name and No.

Owen No.2

9. API Well No.

30-045-10587

10. Field and Pool, or Exploratory Area

Blanco Mesa Verde

11. County or Parish, State

San Juan, New Mexico

SUBMIT IN TRIPLICATE

1. Type of Well

☐ Oil Well ☒ Gas Well ☐ Other

2. Name of Operator

ROMO Corporation

3. Address and Telephone No.

P.O. Box 1785, Farmington, New Mexico, 87499 325-5220

4. Location of Well (Footage, Sec., T., R., M., or Survey Description)

1750' FNL - 1585' FEL Section 19, T31N, R12W, NMPM

12. CHECK APPROPRIATE BOX(s) TO INDICATE NATURE OF NOTICE, REPORT, OR OTHER DATA

TYPE OF SUBMISSION

☒ Notice of Intent

☐ Subsequent Report

☐ Final Abandonment Notice

TYPE OF ACTION

☐ Abandonment

☐ Recompletion

☐ Plugging Back

☐ Casing Repair

☐ Altering Casing

☒ Other Temporary Abandonment

☐ Change of Plans

☐ New Construction

☐ Non-Routine Fracturing

☐ Water Shut-Off

☐ Conversion to Injection

☐ Dispose Water

(Note: Report results of multiple completion on Well Completion or Recompletion Report and Log form.)

13. Describe Proposed or Completed Operations (Clearly state all pertinent details, and give pertinent dates, including estimated date of starting any proposed work. If well is directionally drilled, give subsurface locations and measured and true vertical depths for all markers and zones pertinent to this work.)*

ROMO Corporation proposes to temporarily abandon the Mesa Verde zone in this well and evaluate the wellbore for a possible Fruitland recompletion. The proposed temporary abandon operation will be completed before December 31, 1992 and the Fruitland completion will be attempted in 1993. Final cementing plans for the upper portion of the hole will be submitted in 1993 when it is determined whether to attempt the Fruitland completion or permanently plug and abandon the well. The proposed procedure for this proposed temporary abandonment is shown on the attachment wellbore schematic.

THIS APPROVAL EXPIRES JUL 15 1993

14. I hereby certify that the foregoing is true and correct

Signed Kenneth E. Laddy

Title President

Date June 29, 1992

(This space for Federal or State office use)

Approved by

Title

Date

Conditions of approval, if any:

APPROVED

JUL 15 1992

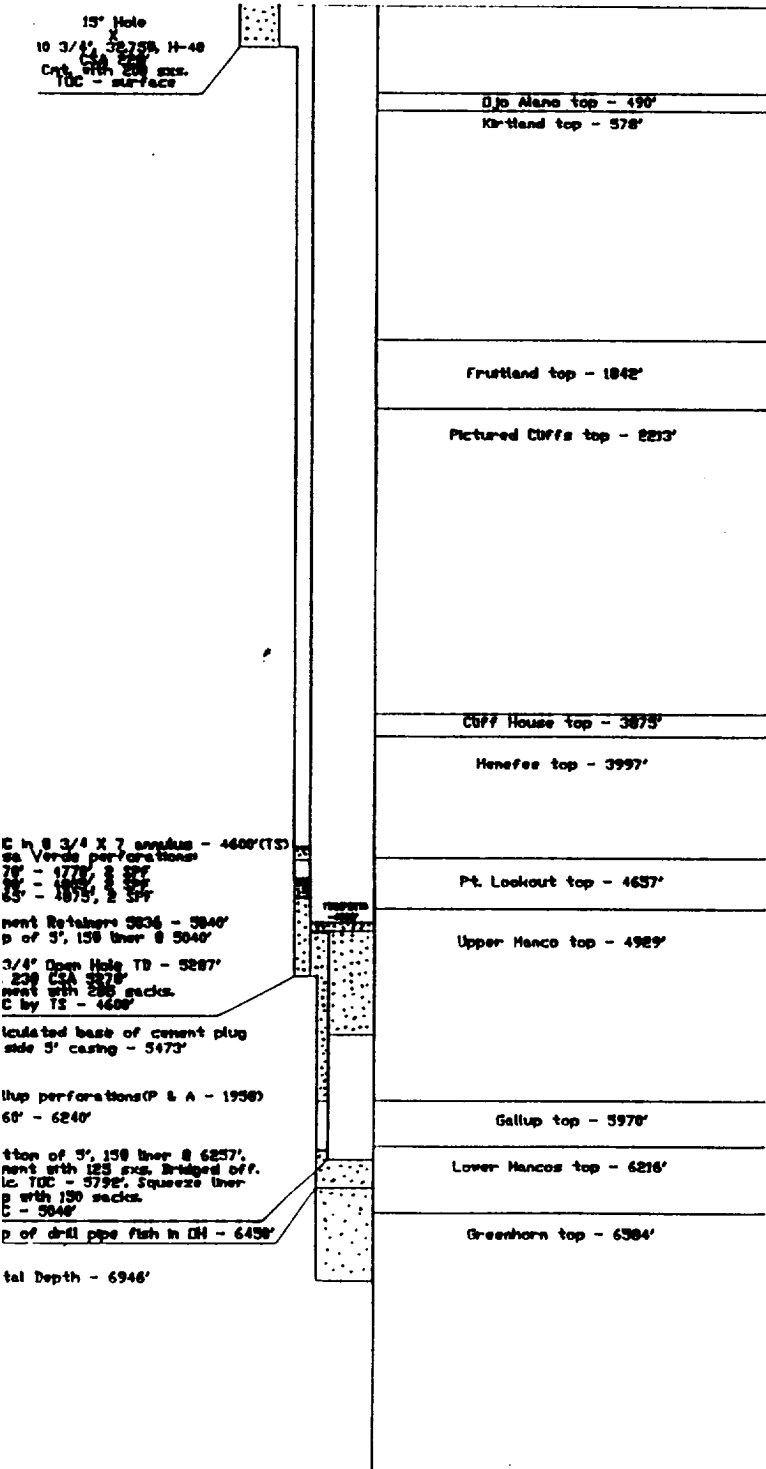
AREA MANAGER

Title 18 U.S.C. Section 1001, makes it a crime for any person knowingly and willfully to make to any department or agency of the United States any false, fictitious or fraudulent statements or representations as to any matter within its jurisdiction.

*See instruction on Reverse Side

NMOOD

RDM Corporation Owen No.2 Wellbore Schematic



Proposed Procedure

- 1) Move in, rig up service unit.
- 2) Kill well with water.
- 3) Install BOPE.
- 4) Pull tubing, visually inspect for damage.
- 5) RIH with 7" cement retainer. Set at 4600: Pressure test casing above retainer to 500 psig.
- 6) Squeeze Mesa Verde perforations with 75 sacks Class B cement. Underdisplace squeeze to leave 7 sacks slurry in tubing. Pull out of retainer, spot seven sacks on top of retainer.
- 7) Perform additional remedial cement work if casing above retainer does not hold pressure test.
- 8) Load hole with 85 bbls of 8.6 ppg - 40 viscosity mud (volume to fill from 4550 - 2350').
- 9) Land tubing. Nipple down BOPE. Install well-head.
- 10) Rig down service unit.

RECEIVED
OCT 17 1961
FACILITY
OCT 17 1961
OCT 17 1961