

NEW MEXICO OIL CONSERVATION COMMISSION  
Santa Fe, New Mexico

## NOTICE OF INTENTION TO DRILL OR RECOMPLETE

Notice must be given to the District Office of the Oil Conservation Commission and approval obtained before drilling or recompletion begins. If changes in the proposed plan are considered advisable, a copy of this notice showing such changes will be returned to the sender. Submit this notice in **QUINTUPLICATE**. One copy will be returned following approval. See additional instructions in Rules and Regulations of the Commission.

Farmington, New Mexico  
(Place)November 22, 1954  
(Date)OIL CONSERVATION COMMISSION  
SANTA FE, NEW MEXICO

Gentlemen:

You are hereby notified that it is our intention to commence the (Drilling) ~~(Recompletion)~~ of a well to be known as**Stanolind Oil and Gas Company**

(Company or Operator)

**State Gas Unit "K"**  
(Lease)Well No. **1****H**  
(Unit)located **1650** feet from the **South** line and **790** feet from the**West** line of Section **16**, T. **31-N**, R. **11-W**, NMPM.(GIVE LOCATION FROM SECTION LINE) **Blanco-Mesaverte** Pool, **San Juan** CountyIf State Land the Oil and Gas Lease is No. **B-11017 Assignment 16**

If patented land the owner is.....

Address.....

We propose to drill well with drilling equipment as follows:.....

**Rotary tools to total depth.**

The status of plugging bond is.....

Drilling Contractor.....

**Iron Drilling Company**  
**1206 Philtower Building**  
**Tulsa, Oklahoma**We intend to complete this well in the **Mesaverte**formation at an approximate depth of **5400** feet.

## CASING PROGRAM

We propose to use the following strings of Casing and to cement them as indicated:

| Size of Hole   | Size of Casing | Weight per Foot | New or Second Hand | Depth        | Sacks Cement |
|----------------|----------------|-----------------|--------------------|--------------|--------------|
| <b>12-1/4"</b> | <b>9-5/8"</b>  | <b>32.3#</b>    | <b>New</b>         | <b>250'</b>  | <b>200</b>   |
| <b>8-3/4"</b>  | <b>7"</b>      | <b>20#</b>      | <b>New</b>         | <b>3000'</b> |              |
| <b>8-3/4"</b>  | <b>7"</b>      | <b>23#</b>      | <b>New</b>         | <b>4550'</b> |              |

If changes in the above plans become advisable we will notify you immediately.

ADDITIONAL INFORMATION (If recompletion give full details of proposed plan of work.)

**Designated Drilling Unit W/2, Section 16.****Copies of location plat attached.****Lease plat and ground level elevation to be reported at a later date.**Approved.....  
Except as follows:

11-26-19-54

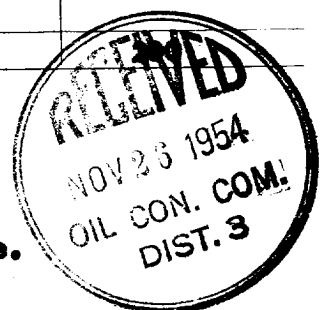
Sincerely yours,

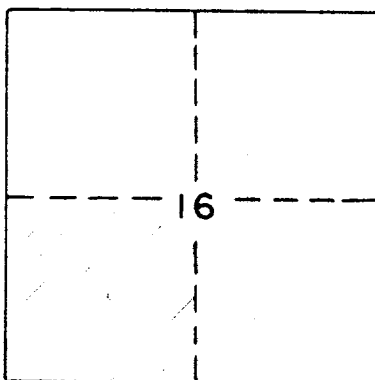
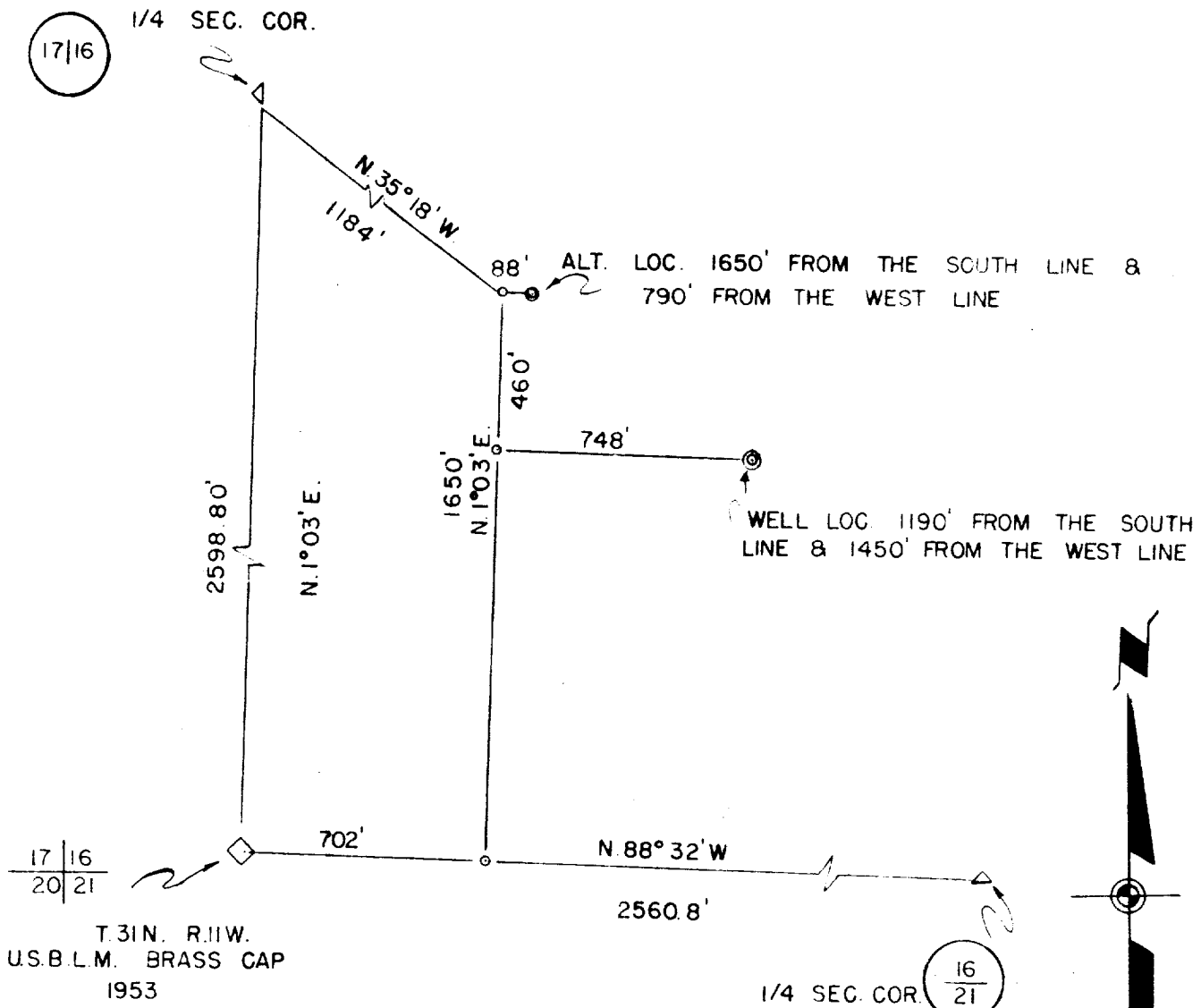
**Stanolind Oil and Gas Company**  
(Company or Operator)By **L.O. Spear, Jr.**  
Position **Field Superintendent**

Send Communications regarding well to

Name **Mr. L. O. Spear, Jr.**Address **Box 487****Farmington, New Mexico**

OIL CONSERVATION COMMISSION

By **Ernest C. Clum**  
Title **Oil and Gas Inspector Dist. #3.**



This is to certify that the above plat was prepared from field notes of actual surveys made by me or under my supervision and that the same are true and correct to the best of my knowledge and belief.

*James P. Leese*

James P. Leese  
Reg. Land Surveyor  
N. Mex. Reg. No. 1463

State Gas Unit "K"

RECEIVED  
SEP 23 1954  
STANOLIND OIL & GAS CO.  
DIST. 103

STANOLIND OIL & GAS CO.

WELL LOCATION, SE 1/4 SW 1/4,  
SEC. 16, T.31N., R.11W., N.M.P.M.  
SAN JUAN CO., NEW MEXICO

SEPT 17, 1954

SCALE 1" = 500'

DRAWN BY *D. C. Talley*

The San Juan Engineering Company  
Farmington, New Mexico

|                              |                  |   |
|------------------------------|------------------|---|
| OIL CONSERVATION COMMISSION  |                  |   |
| AZTEC DISTRICT OFFICE        |                  |   |
| No. Copies Received <u>4</u> |                  |   |
| DISTRIBUTION                 |                  |   |
|                              | NO.<br>FURNISHED |   |
| Operator                     | 1                |   |
| Santa Fe                     | 1                |   |
| Proration Office             |                  |   |
| State Land Office            | 1                |   |
| U. S. G. S.                  |                  |   |
| Transporter                  |                  |   |
| File                         | 1                | ✓ |