

NOV 18 1981
Form 9-331
Dec. 1979
L CC
Dist. 3

UNITED STATES
DEPARTMENT OF THE INTERIOR
GEOLOGICAL SURVEY

Form Approved.
Budget Bureau No. 42-R1424

SUNDRY NOTICES AND REPORTS ON WELLS

(Do not use this form for proposals to drill or to deepen or plug back to a different reservoir. Use Form 9-331-C for such proposals.)

1. oil well ☐ gas well ☒ other ☐
2. NAME OF OPERATOR
El Paso Natural Gas Company
3. ADDRESS OF OPERATOR
PO Box 289, Farmington, NM 87401
4. LOCATION OF WELL (REPORT LOCATION CLEARLY. See space 17 below.)
AT SURFACE: 1610'N, 1450'E
AT TOP PROD. INTERVAL:
AT TOTAL DEPTH:

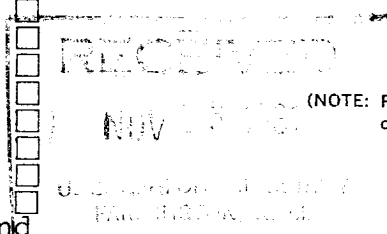
16. CHECK APPROPRIATE BOX TO INDICATE NATURE OF NOTICE, REPORT, OR OTHER DATA

REQUEST FOR APPROVAL TO:

- TEST WATER SHUT-OFF ☐
FRACTURE TREAT ☐
SHOOT OR ACIDIZE ☐
REPAIR WELL ☐
PULL OR ALTER CASING ☐
MULTIPLE COMPLETE ☐
CHANGE ZONES ☒
ABANDON* ☐

SUBSEQUENT REPORT OF:

(other) Plug back to Fruitland



(NOTE: Report results of multiple completion or zone change on Form 9-330.)

5. LEASE
SF 078051
6. IF INDIAN, ALLOTTEE OR TRIBE NAME
7. UNIT AGREEMENT NAME
8. FARM OR LEASE NAME
Mudge
9. WELL NO.
18
10. FIELD OR WILDCAT NAME
Basin Dakota
11. SEC., T., R., M., OR BLK. AND SURVEY OR AREA
Sec. 15, T-31-N, R-11-W
NMPM
12. COUNTY OR PARISH
San Juan
13. STATE
NM
14. API NO.
15. ELEVATIONS (SHOW DF, KDB, AND WD)
6138' GL

17. DESCRIBE PROPOSED OR COMPLETED OPERATIONS (Clearly state all pertinent details, and give pertinent dates, including estimated date of starting any proposed work. If well is directionally drilled, give subsurface locations and measured and true vertical depths for all markers and zones pertinent to this work.)*

It is intended to plug back this wellbore from the Dakota to the Fruitland formation using the following procedure:

Spot a 35 sk. cement plug from 7059-7285'. Squeeze 6 sks. into perforations. Perforate 4 squeeze holes at ~~6110~~ 6110'. Spot a 30 sk. plug across squeeze holes and squeeze cement into perforations, leaving a plug inside the casing from ~~6010~~ 6110'. Perforate 4 squeeze holes at ~~4314~~ 4314'. Spot a 30 sk. plug across squeeze holes and squeeze cement into perforations, leaving a plug inside casing from ~~4214~~ 4314'. Cut off casing at or below 2800' and recover pipe. Spot an 8 sk. plug inside casing stub. Set a 7 5/8" cement retainer at 2650' and squeeze cement with 50 sk. cement. Pressure test casing to 1500'. Perform any remedial squeeze cementing as needed. Selectively perforate and fracture Fruitland. Return well to production.

Subsurface Safety Valve: Manu. and Type _____ Set @ _____ Ft.

18. I hereby certify that the foregoing is true and correct

SIGNED Raymond W. Vinyard TITLE Project Drilling Engineer DATE November 13, 1981

(This space for Federal or State office use)

APPROVED BY (Orig. Sgd.) RAYMOND W. VINYARD TITLE RAYMOND W. VINYARD DATE NOV 17 1981
CONDITIONS OF APPROVAL, IF ANY: ACTING DISTRICT SUPERVISOR