

AMOCO PRODUCTION COMPANY MUDGE LS-16
Operator Lease
16 920' FNL X 1650' FEL 10 31 NORTH 11 WEST
Well No. Footage Location Section Township Range
SAN JUAN COUNTY, NEW MEXICO

Schematic

Tabular Data

Surface Casing

Size 10 3/4" Cemented with 200 sx.

TOC SURFACE feet determined by CIRCULATION

Hole size 15"

Intermediate Casing

Size 7 5/8" Cemented with 250 sx.

TOC 980' feet determined by TEMP SURVEY

Hole size 9 7/8"

Long String

Size 5 1/2" Cemented with 200 sx.

TOC 4950' feet determined by TEMP SURVEY

Hole size 6 3/4"

Total depth 7580'

Injection interval

(will perforate selected intervals)

7428 feet to 7570 feet

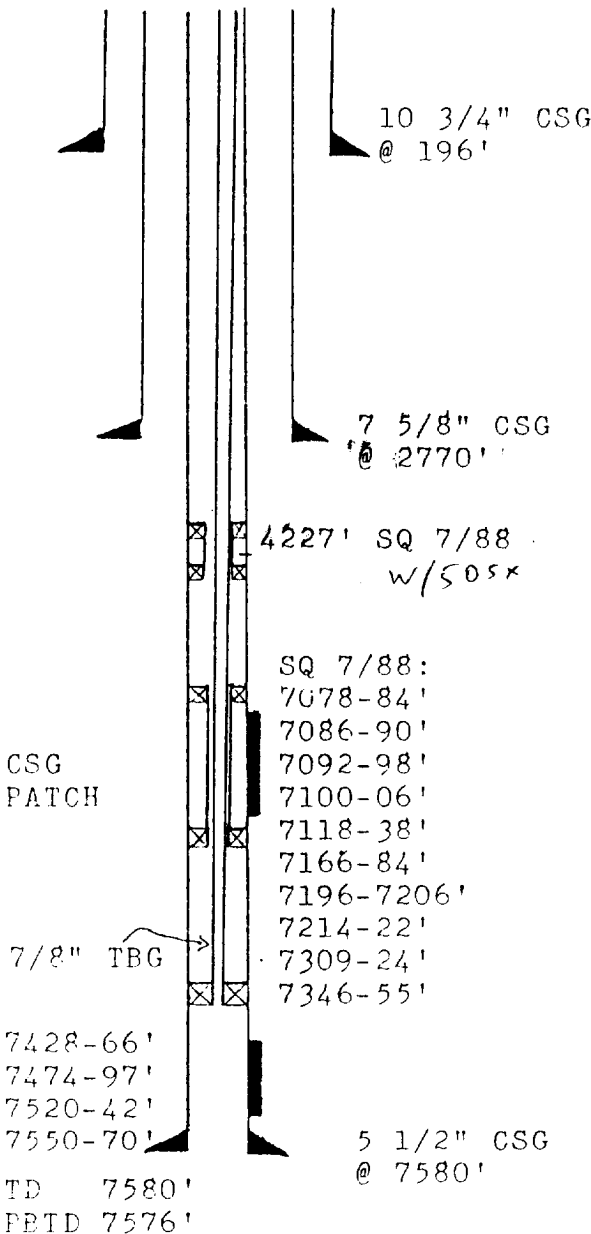
LINER NO LINER

Size " Cemented with sx.

TOC feet determined by

Hole size

Total depth



Tubing size 2 7/8" lined with (material) set in a packer at feet (brand and model) (or describe any other casing-tubing seal).

Other Data

- Name of the injection formation Morrison
- Name of Field or Pool (if applicable) NA
- Is this a new well drilled for injection? ☐ Yes ☒ No
If no, for what purpose was the well originally drilled? Natural Gas Well
- Has the well ever been perforated in any other zone(s)? List all such intervals and give plugging detail (sacks or cement or bridge plug(s) used). YES Dakota with 164' of perforations between 7078' and 7355' 7/16/88 squeezed with 100 sx of Class G w/7% CaCl; pressure tested to 600 psi, held OK
- Give the depth to and name of any overlying and/or underlying oil or gas zones (pools) in this area. 3620' ASL Fruitland; 3340' ASL Picured Cliffs; 1600' ASL Mesaverde; -1095 ASL Dakota

Letter 2282'