

30-045-21813

NO. OF COPIES RECEIVED	7
DISTRIBUTION	
SANTA FE	1
FILE	1 ✓
U.S.G.S.	2
LAND OFFICE	1
OPERATOR	2

NEW MEXICO OIL CONSERVATION COMMISSION

Form C-101  
Revised 1-1-65

5A. Indicate Type of Lease  
STATE  FEE

5. State Oil & Gas Lease No.

7. Unit Agreement Name

8. Farm or Lease Name  
Dusenberry

9. Well No.  
#2-A

10. Field and Pool, or Wildcat  
Blanco Mesaverde

12. County  
San Juan

19. Proposed Depth  
5400

19A. Formation  
Mesaverde

20. Rotary or C.T.  
rotary

21. Elevations (Show whether DF, RT, etc.)  
6336' GR

21A. Kind & Status Plug. Bond

21B. Drilling Contractor

22. Approx. Date Work will start

APPLICATION FOR PERMIT TO DRILL, DEEPEN, OR PLUG BACK

1a. Type of Work  
DRILL  DEEPEN  PLUG BACK

b. Type of Well  
OIL WELL  GAS WELL  OTHER

SINGLE ZONE  MULTIPLE ZONE

2. Name of Operator  
Aztec Oil & Gas Company

3. Address of Operator  
P. O. Drawer 570, Farmington, New Mexico

4. Location of Well  
UNIT LETTER G LOCATED 1620 FEET FROM THE North LINE  
AND 1590 FEET FROM THE East LINE OF SEC. 1 TWP. 31N RGE. 12W NMPM

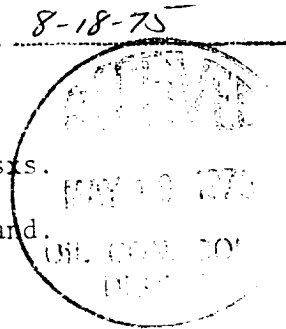
23. PROPOSED CASING AND CEMENT PROGRAM

SIZE OF HOLE	SIZE OF CASING	WEIGHT PER FOOT	SETTING DEPTH	SACKS OF CEMENT	EST. TOP
15"	9-5/8"	32.30	300	300 sxs	
8-3/4"	7"	23#	5000	200 sxs	
6-3/4"	4-1/2"	10.50#	4900 - 5400	150 sxs	
	1-1/2"	2.9#	5350		

PROPOSE TO:

Drill 15" hole.  
 Set 300' of 9-5/8" surface casing. Cement with 300 sxs.  
 Drill 8-3/4" hole to 5000'.  
 Run 7" casing. Cement with 200 sxs.  
 Gas drill 6-3/4" hole to approximately 5400'.  
 Run 4-1/2" liner from 4900' to 5400'. Cement with 150 sxs.  
 Perforate Mesaverde formation.  
 Sand/water frac with 40,000 gallons water and 40,000# sand.  
 Run 1-1/2" tubing.  
 Install well head.

APPROVAL VALID  
30 DAYS UNLESS  
SPECIFIC COMMENCED,



IN ABOVE SPACE DESCRIBE PROPOSED PROGRAM: IF PROPOSAL IS TO DEEPEN OR PLUG BACK, GIVE DATA ON PRESENT PRODUCTIVE ZONE AND PROPOSED NEW PRODUCTIVE ZONE. GIVE BLOWOUT PREVENTER PROGRAM, IF ANY.

I hereby certify that the information above is true and complete to the best of my knowledge and belief.

Signed Jac C. Salmon Title District Superintendent Date May 1, 1975

(This space for State Use)

APPROVED BY [Signature] TITLE SUPERVISOR DIST. #3 DATE MAY 19 1975

CONDITIONS OF APPROVAL, IF ANY:

**NEW MEXICO OIL CONSERVATION COMMISSION  
WELL LOCATION AND ACREAGE DEDICATION PLAT**

Form C-102  
Supersedes C-128  
Effective 1-1-65

All distances must be from the outer boundaries of the Section.

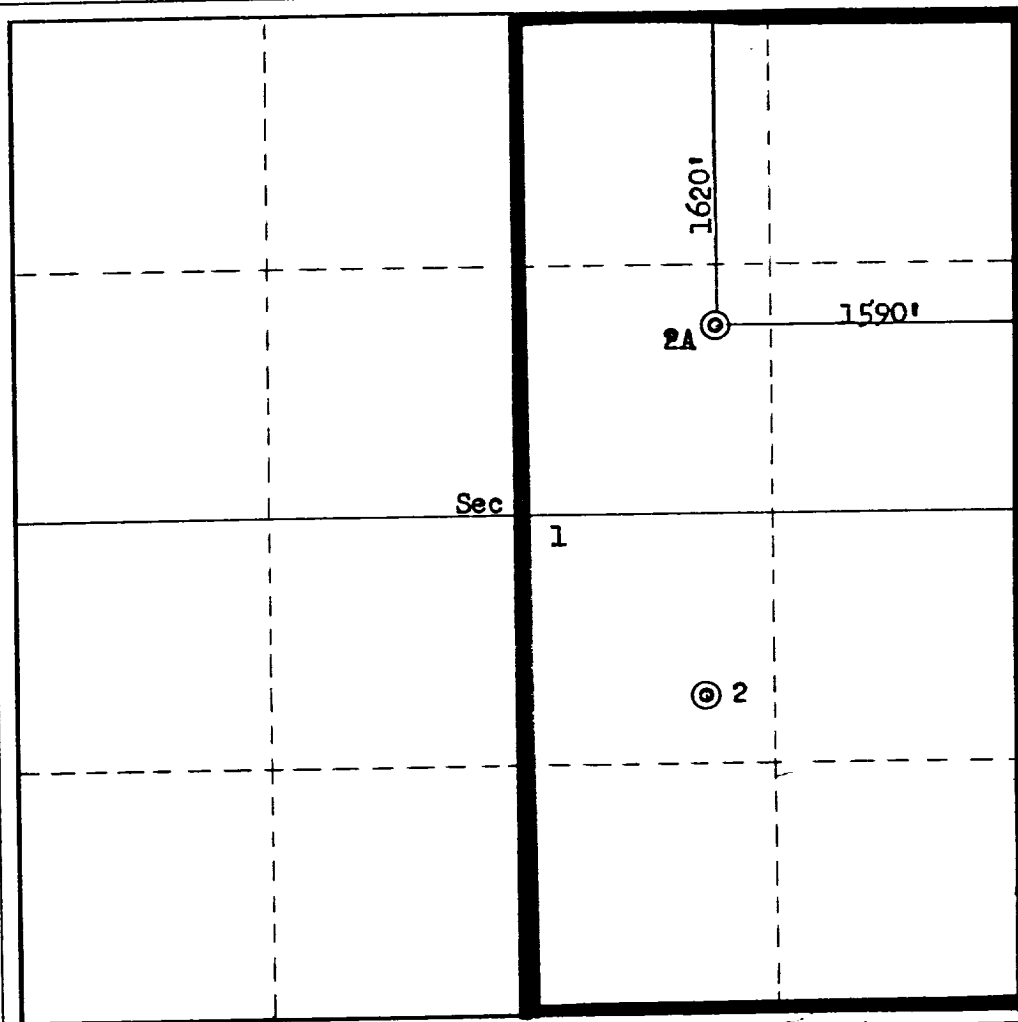
Operator <b>Aztec Oil &amp; Gas Company</b>			Lease <b>Dusenberry</b>		Well No. <b>2A</b>
Unit Letter <b>G</b>	Section <b>1</b>	Township <b>31N</b>	Range <b>12W</b>	County <b>San Juan</b>	
Actual Footage Location of Well: <b>1620</b> feet from the <b>North</b> line and <b>1590</b> feet from the <b>East</b> line					
Ground Level Elev. <b>6336</b>	Producing Formation <b>Mesa Verde</b>		Pool <b>Blanco</b>		Dedicated Acreage: <b>315.58</b> Acres

1. Outline the acreage dedicated to the subject well by colored pencil or hachure marks on the plat below.
2. If more than one lease is dedicated to the well, outline each and identify the ownership thereof (both as to working interest and royalty).
3. If more than one lease of different ownership is dedicated to the well, have the interests of all owners been consolidated by communitization, unitization, force-pooling, etc?

Yes     No    If answer is "yes," type of consolidation \_\_\_\_\_

If answer is "no," list the owners and tract descriptions which have actually been consolidated. (Use reverse side of this form if necessary.) \_\_\_\_\_

No allowable will be assigned to the well until all interests have been consolidated (by communitization, unitization, forced-pooling, or otherwise) or until a non-standard unit, eliminating such interests, has been approved by the Commission.



**CERTIFICATION**

*I hereby certify that the information contained herein is true and complete to the best of my knowledge and belief.*

Name: *Law C. Salmon*

Position: District Superintendent

Company: Aztec Oil & Gas Company

Date: May 1, 1975

*I hereby certify that the well location shown on this plat was plotted from field notes of actual surveys made by me or under my supervision, and that the same is true and correct to the best of my knowledge and belief.*

Date Surveyed: April 25, 1975

Registered Professional Engineer and/or Land Surveyor: 3950

*Fred B. Kerr*

Certificate No. 3950

