

District I
P.O. Box 1980 Hobbs, NM

Denny E. Foust

District II
Drawer DD, Artesia, NM 88221

DEPUTY OIL & GAS INSPECTOR

District III
1000 Rio Brazos Rd, Aztec, NM 87410

State of New Mexico
Energy, Minerals and Natural Resources Department

SUBMIT 1 COPY TO
APPROPRIATE
DISTRICT OFFICE
AND 1 COPY TO
SANTA FE OFFICE

OIL CONSERVATION DIVISION

2040 South Pacheco Street
Santa Fe, New Mexico 87505

PIT REMEDIATION AND CLOSURE REPORT

Operator: PNM Gas Services (Burlington) **Telephone:** 324-3764

Address: 603 W. Elm Street Farmington, NM 87401

Facility or Well Name: Randelman #1A

Location: Unit E Sec 13 T 31 N R 11 W County San Juan

Pit Type: Separator ☒ Dehydrator ☐ Other ☐ No ☐

Land Type: BLM State Fee ☒ Other No

Pit Location:	Pit dimensions:	length	15'	width	15'	depth	3'
----------------------	------------------------	--------	-----	-------	-----	-------	----

(Attach diagram) Reference: wellhead ☒ other

Footage from reference: 96'

Direction from reference: 17 Degrees ☒ East North 1
of
☐ West South ☒

Depth to Ground Water:	Less than 50 feet	(20 points)	
	50 feet to 99 feet	(10 points)	
(Vertical distance from contaminants to	Greater than 100 feet	(0 points)	10

(Vertical distance from contaminants to seasonal high water elevation of ground water)

Wellhead Protection Area:

(Less than 200 feet from a private domestic water source, or; less than 1,000 feet from all other water sources)

Distance to Surface Water:

(Horizontal distance to perennial lakes, ponds, rivers, streams, creeks, irrigation canals and ditches)

Yes	(20 points)	
No	(0 points)	0

Less than 200 feet	(20 points)	
200 feet to 1,000 feet	(10 points)	
Greater than 1,000 feet	(0 points)	0

RANKING SCORE (TOTAL POINTS): 10

RECEIVED
JUL 31 1997
OIL CON. DIV.
DIST. 3

Randelman #1A

Date Remediation Started: 4/21/97 Date Completed: 4/24/97

Remediation Method: Excavation X Approx. Cubic Yard 316

(Check all appropriate sections)

Landfarmed X Amount Landfarmed (cubic yds) 316

Other _____

Remediation Location: Onsite X Offsite _____
(i.e., landfarmed onsite, name and location of offsite facility)

Backfill Material Location: _____

General Description of Remedial Action:

Excavated contaminated soil to a pit size of 21' x 22' x 22' and landfarmed soil onsite within a bermed area at a depth of 6" to 12". Soil was aerated by disking/plowing until soil met regulatory levels.

Ground Water Encountered: No ☒ Yes _____ Depth _____

Final Pit Closure Sampling:

Sample Location 5 pt. composite - 4 side walls and center of pit bottom.

(if multiple samples, attach sample result and diagram of sample locations and depths.)

Sample depth 22'

Sample date 4/16/97 Sample time 2:15:00 PM

Sample Results

Benzene (ppm) 0.2110

Total BTEX (ppm) 10.4190

Field headspace (ppm) _____

TPH 15.80 Method 8015A

Vertical Extent (ft) _____ Risk Assessment form attached Yes _____ No ☒

Ground Water Sample: Yes _____ No ☒ (If yes, see attached Groundwater Site Summary Report)

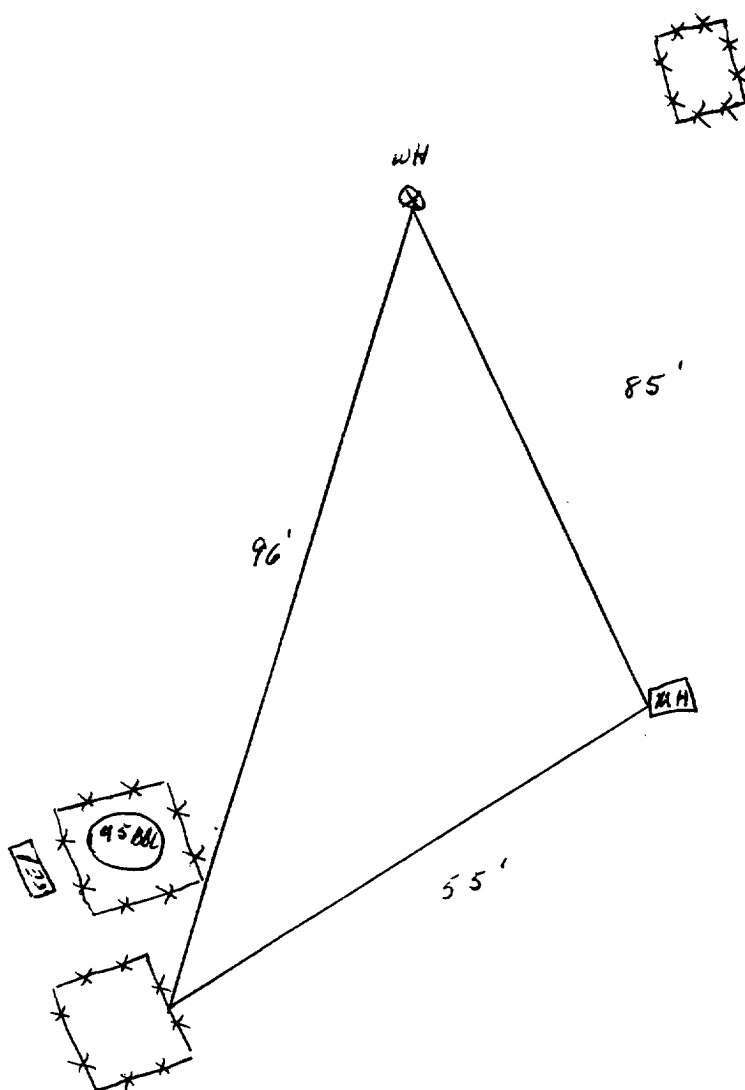
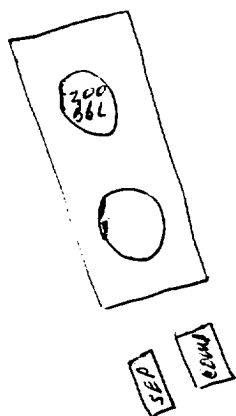
I HEREBY CERTIFY THAT THE INFORMATION ABOVE IS TRUE AND COMPLETE TO THE BEST OF MY KNOWLEDGE AND MY BELIEF

DATE July 28, 1997
SIGNATURE 

PRINTED NAME **Denver Bearden**
AND TITLE **Administrator III**

Randallman 1A

↑
N



OFF: (505) 325-5667



LAB: (505) 325-1556

ANALYTICAL REPORT

Attn: *Denver Bearden*
Company: *PNM Gas Services*
Address: *603 W. Elm*
City, State: *Farmington, NM 87401*

Date: *22-Apr-97*
COC No.: *5142*
Sample No.: *14246*
Job No.: *2-1000*

Project Name: *PNM Gas Services - Randleman #1A*
Project Location: *9704161415; Pit Bottom @ 22'*
Sampled by: *RH* Date: *16-Apr-97* Time: *14:15*
Analyzed by: *HR* Date: *22-Apr-97*
Sample Matrix: *Soil*

Laboratory Analysis

Parameter	Results as Received	Unit of Measure	Limit of Quantitation	Unit of Measure
<i>Diesel Range Organics (C10 - C28)</i>	<i>15.8</i>	<i>mg/kg</i>	<i>5.0</i>	<i>mg/kg</i>

ND - Not Detected at Limit of Quantitation

Quality Assurance Report

DRO QC No.: *0519-STD*

Continuing Calibration Verification

Parameter	Method Blank	Unit of Measure	True Value	Analyzed Value	RPD	RPD Limit
<i>Diesel Range (C10 - C28)</i>	<i>ND</i>	<i>ppm</i>	<i>100</i>	<i>111</i>	<i>10.1</i>	<i>15%</i>

Matrix Spike

Parameter	1- Percent Recovered	2 - Percent Recovered	Limit	RPD	RPD Limit
<i>Diesel Range (C10-C28)</i>	<i>99</i>	<i>99</i>	<i>(70-130)</i>	<i>0</i>	<i>20%</i>

Method - *SW-846 EPA Method 8015A mod. - Nonhalogenated Volatile Hydrocarbons by Gas Chromatography*

Approved by: *[Signature]*

Date: *4/22/97*

P.O. BOX 2606 • FARMINGTON, NM 87499

- TECHNOLOGY BLENDING INDUSTRY WITH THE ENVIRONMENT -

OFF: (505) 325-5667



LAB: (505) 325-1556

ANALYTICAL REPORT

Attn: *Denver Bearden*
Company: *PNM Gas Services*
Address: *603 W. Elm*
City, State: *Farmington, NM 87401*

Date: *21-Apr-97*
COC No.: *5142*
Sample No.: *14246*
Job No.: *2-1000*

Project Name: *PNM Gas Services - Randelman #1A*
Project Location: *9704161415; Pit Bottom @ 22'*
Sampled by: *RH* Date: *16-Apr-97* Time: *14:15*
Analyzed by: *DC* Date: *17-Apr-97*
Sample Matrix: *Soil*

Laboratory Analysis

Parameter	Results as Received	Unit of Measure	Limit of Quantitation	Unit of Measure
<i>Benzene</i>	211	ug/kg	50	ug/kg
<i>Toluene</i>	2453	ug/kg	50	ug/kg
<i>Ethylbenzene</i>	602	ug/kg	50	ug/kg
<i>m,p-Xylene</i>	6104	ug/kg	50	ug/kg
<i>o-Xylene</i>	1049	ug/kg	50	ug/kg
	<i>TOTAL</i>	10419	ug/kg	

ND - Not Detected at Limit of Quantitation

Method - SW-846 EPA Method 8020A Aromatic Volatile Organics by Gas Chromatography

Approved by: *[Signature]*
Date: *4/21/97*

P.O. BOX 2606 • FARMINGTON, NM 87499

- TECHNOLOGY BLENDING INDUSTRY WITH THE ENVIRONMENT -

OFF: (505) 325-5667



LAB: (505) 325-1556

ANALYTICAL REPORT

Attn: *Denver Bearden*
Company: *PNM Gas Services*
Address: *603 W. Elm*
City, State: *Farmington, NM 87401*

Date: *2-May-97*
COC No.: *5143*
Sample No.: *14292*
Job No.: *2-1000*

Project Name: *PNM Gas Services - Randleman 1A*
Project Location: *9704211040; Excavation Wall Composite Sample*
Sampled by: *RH* Date: *21-Apr-97* Time: *10:40*
Analyzed by: *HR/DC* Date: *29-Apr-97*
Sample Matrix: *Soil*

Laboratory Analysis

Parameter	Results as Received	Unit of Measure	Limit of Quantitation	Unit of Measure
<i>Diesel Range Organics (C10 - C28)</i>	<i>74.1</i>	<i>mg/kg</i>	<i>5.0</i>	<i>mg/kg</i>

ND - Not Detected at Limit of Quantitation

Quality Assurance Report

DRO QC No.: *0519-STD*

Continuing Calibration Verification

Parameter	Method Blank	Unit of Measure	True Value	Analyzed Value	RPD	RPD Limit
<i>Diesel Range (C10 - C28)</i>	<i>ND</i>	<i>ppm</i>	<i>100</i>	<i>95</i>	<i>4.8</i>	<i>15%</i>

Matrix Spike

Parameter	1- Percent Recovered	2 - Percent Recovered	Limit	RPD	RPD Limit
<i>Diesel Range (C10-C28)</i>	<i>86</i>	<i>93</i>	<i>(70-130)</i>	<i>8</i>	<i>20%</i>

Method - *SW-846 EPA Method 8015A mod. - Nonhalogenated Volatile Hydrocarbons by Gas Chromatography*

Approved by: *[Signature]*

Date: *5/2/97*

P.O. BOX 2606 • FARMINGTON, NM 87499

- TECHNOLOGY BLENDING INDUSTRY WITH THE ENVIRONMENT -

OFF: (505) 325-5667



LAB: (505) 325-1556

ANALYTICAL REPORT

Attn: *Denver Bearden*
Company: *PNM Gas Services*
Address: *603 W. Elm*
City, State *Farmington, NM 87401*

Date: *28-Apr-97*
COC No.: *5143*
Sample No.: *14292*
Job No.: *2-1000*

Project Name: ***PNM Gas Services - Randleman 1A***
Project Location: ***9704211040; Excavation Wall Composite Sample***
Sampled by: *RH* Date: *21-Apr-97* Time: *10:40*
Analyzed by: *DC* Date: *23-Apr-97*
Sample Matrix: *Soil*

Laboratory Analysis

Parameter	Results as Received	Unit of Measure	Limit of Quantitation	Unit of Measure
<i>Benzene</i>	ND	ug/kg	100	ug/kg
<i>Toluene</i>	1155	ug/kg	100	ug/kg
<i>Ethylbenzene</i>	1166	ug/kg	100	ug/kg
<i>m,p-Xylene</i>	16782	ug/kg	100	ug/kg
<i>o-Xylene</i>	4147	ug/kg	100	ug/kg
	<i>TOTAL</i>	23250	ug/kg	

ND - Not Detected at Limit of Quantitation

Method - *SW-846 EPA Method 8020A Aromatic Volatile Organics by Gas Chromatography*

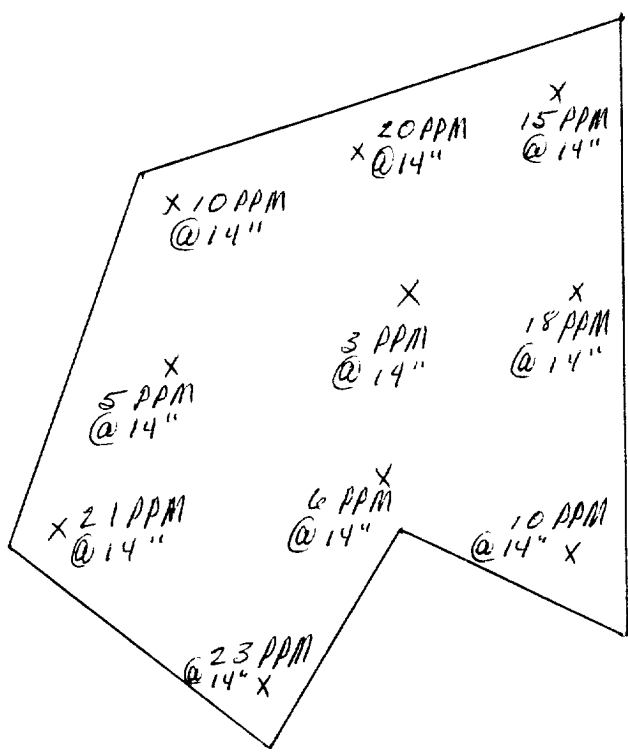
Approved by: *[Signature]*
Date: *4/28/97*

P.O. BOX 2606 • FARMINGTON, NM 87499

- TECHNOLOGY BLENDING INDUSTRY WITH THE ENVIRONMENT -

11
N

See attached lab results for BTEX.



Randleman #1A
6-16-97 @ 0915

OFF: (505) 325-5667



LAB: (505) 325-1556

ANALYTICAL REPORT

Attn: *Denver Bearden*
Company: *PNM Gas Services*
Address: *603 W. Elm*
City, State: *Farmington, NM 87401*

Date: *20-Jun-97*
COC No.: *5156*
Sample No.: *14956*
Job No.: *2-1000*

Project Name: *PNM Gas Services - Randleman #1A Landfarm*
Project Location: *9706160915; 10pt. Composite*
Sampled by: *RH* Date: *16-Jun-97* Time: *9:15*
Analyzed by: *DC/HR* Date: *19-Jun-97*
Sample Matrix: *Soil*

Laboratory Analysis

Parameter	Results as Received	Unit of Measure	Limit of Quantitation	Unit of Measure
<i>Diesel Range Organics (C10 - C28)</i>	ND	mg/kg	5	mg/kg

ND - Not Detected at Limit of Quantitation

Quality Assurance Report

DRO QC No.: 0548-STD

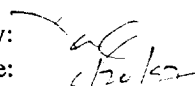
Continuing Calibration Verification

Parameter	Method Blank	Unit of Measure	True Value	Analyzed Value	RPD	RPD Limit
<i>Diesel Range (C10 - C28)</i>	ND	ppm	200	195	2.5	15%

Matrix Spike

Parameter	1- Percent Recovered	2 - Percent Recovered	Limit	RPD	RPD Limit
<i>Diesel Range (C10-C28)</i>	88	95	(70-130)	9	20%

Method - SW-846 EPA Method 8015A mod. - Nonhalogenated Volatile Hydrocarbons by Gas Chromatography

Approved by: 

Date: *6/20/97*

P.O. BOX 2606 • FARMINGTON, NM 87499

- TECHNOLOGY BLENDING INDUSTRY WITH THE ENVIRONMENT -

OFF: (505) 325-5667



LAB: (505) 325-1556

ANALYTICAL REPORT

Attn: *Denver Bearden*
Company: *PNM Gas Services*
Address: *603 W. Elm*
City, State: *Farmington, NM 87401*

Date: *19-Jun-97*
COC No.: *5156*
Sample No.: *14956*
Job No.: *2-1000*

Project Name: *PNM Gas Services - Randleman #1A Landfarm*

Project Location: *9706160915; 10pt. Composite*

Sampled by: *RH* Date: *16-Jun-97* Time: *9:15*

Analyzed by: *HR* Date: *18-Jun-97*

Sample Matrix: *Soil*

Laboratory Analysis

Parameter	Results as Received	Unit of Measure	Limit of Quantitation	Unit of Measure
<i>Benzene</i>	ND	ug/kg	1	ug/kg
<i>Toluene</i>	1	ug/kg	1	ug/kg
<i>Ethylbenzene</i>	ND	ug/kg	1	ug/kg
<i>m,p-Xylene</i>	2	ug/kg	1	ug/kg
<i>o-Xylene</i>	1	ug/kg	1	ug/kg
	<i>TOTAL</i>	4		ug/kg

ND - Not Detected at Limit of Quantitation

Method - *SW-846 EPA Method 8020A Aromatic Volatile Organics by Gas Chromatography*

Approved by: *Jac*
Date: *6/19/97*

P.O. BOX 2606 • FARMINGTON, NM 87499

- TECHNOLOGY BLENDING INDUSTRY WITH THE ENVIRONMENT -